

BALDOR® • ***RELIANCE***

Product Information Packet

EHM2536T

30HP, 1180RPM, 3PH, 60HZ, 326T, 4084M, OPSB, F1

Part Detail							
Revision:	C	Status:	PRD/A	Change #:		Proprietary:	No
Type:	AC	Prod. Type:	4084M	Elec. Spec:	40WGX122	CD Diagram:	CD0005
Enclosure:	OPSB	Mfg Plant:		Mech. Spec:	40E329	Layout:	40LYE329
Frame:	326T	Mounting:	F1	Poles:	06	Created Date:	10-21-2013
Base:	RG	Rotation:	R	Insulation:	F	Eff. Date:	01-03-2017
Leads:	9#10					Replaced By:	
Literature:		Elec. Diagram:					

Nameplate NP2094E06B03										
CAT.NO.	EHM2536T									
SPEC.	40E329X122G1									
HP	30									
VOLTS	230/460									
AMPS	76/38									
RPM	1180									
FRAME	326T			HZ 60			PH 3			
SER.F.	1.15		CODE	H		DES	A		CL	F
NEMA-NOM-EFF	93.6		PF	79						
RATING	40C AMB-CONT									
CC	010A			ODE			USABLE AT 208V 80			
DE	6312			6309						
AUTO			MANUAL			NONE				
ENCL	OPSB		SN							
BLANK										

Parts List		
Part Number	Description	Quantity
SA271174	SA 40E329X122G1	1.000 EA
RA257804	RA 40E329X122G1	1.000 EA
S/P107-000-004	SUPER-E(284 FR. & UP)-CL PLANT,POLYREX E	1.000 EA
HA6361A01	LIFTING LUG FOR 37, 39 & 40 FRAME ZINC	2.000 EA
40CB4000A01	CONDUIT BOX 40, STAMPED	1.000 EA
51XF2520A08	SCREW, HEX SER SLT HD, ZN 1/4-20 X .50 L	2.000 EA
WD1000B16	T&B CX70TN TERMINAL	1.000 EA
40EP3200A02	STD FREP OPEN 309 BRG	1.000 EA
HW5100A11	W3917-042 WVY WSHR (WB)	1.000 EA
40EP3201A09	PU ENDPLATE, MACH - OPEN - FOR 312 BRG	1.000 EA
84XN0540J08	5-40 X 1/2" SHCS, BLACK OXIDE	2.000 EA
XY3816A12	3/8-16 FINISHED NUT	8.000 EA
39CB4500A01	CONDUIT BOX LID 39, STAMPED, W/ PRIMER	1.000 EA
51XF2520A08	SCREW, HEX SER SLT HD, ZN 1/4-20 X .50 L	2.000 EA
HW2501H33	KEY, 1/2 SQ X 3.875	1.000 EA
MN416A01	TAG-INSTAL-MAINT no wire (1000/bx) 11/14	1.000 EA
HW4500A20	1/8NPT SL PIPE PLUG	2.000 EA
MJ1000A02	GREASE, POLYREX EM EXXON (USe 4824-15A)	0.050 LB
HW4500A20	1/8NPT SL PIPE PLUG	2.000 EA
MG1000G27	MED CHARCOAL METALLIC GREY 400-0096	0.030 GA
HA3154A12	THRUBOLT STUD 3/8-16 X 21.00	4.000 EA
40AD2002A01	LEXAN BAFFLE 40 FR OPEN	1.000 EA
40AD2002A01	LEXAN BAFFLE 40 FR OPEN	1.000 EA
LC0005	CONN.DIA.,TY M,9-LD,DUAL VOLT,REVERSING	1.000 EA

Parts List (continued)		
Part Number	Description	Quantity
NP2094E06B03	NP LABEL W/BARCODE (PREM EFF HVAC MTR)	1.000 EA
40PA1000	PACKAGING GROUP	1.000 EA

AC Induction Motor Performance Data

Record # 21238 - Typical performance - not guaranteed values

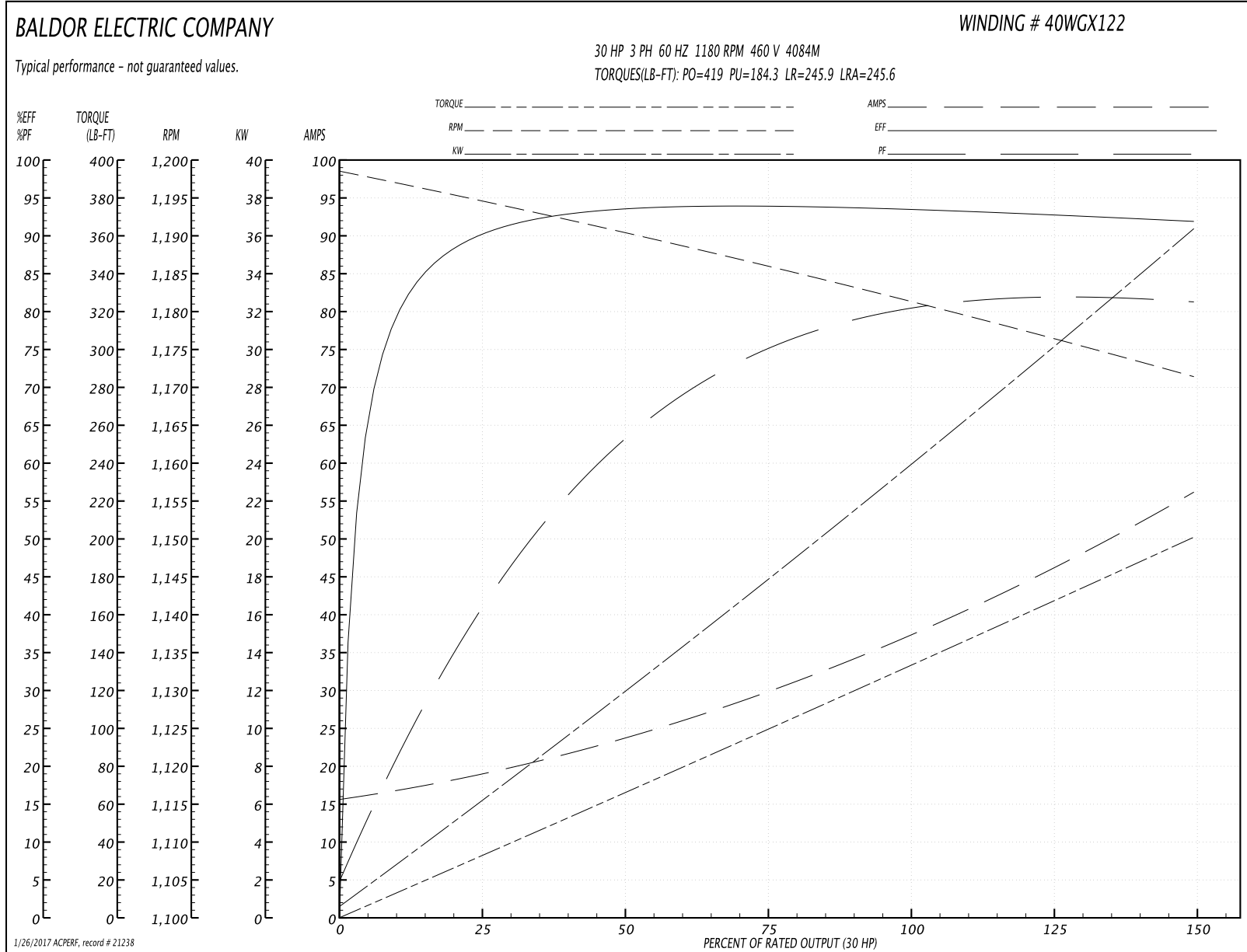
Winding: 40WGX122-R001	Type: 4084M	Enclosure: OPSB
-------------------------------	--------------------	------------------------

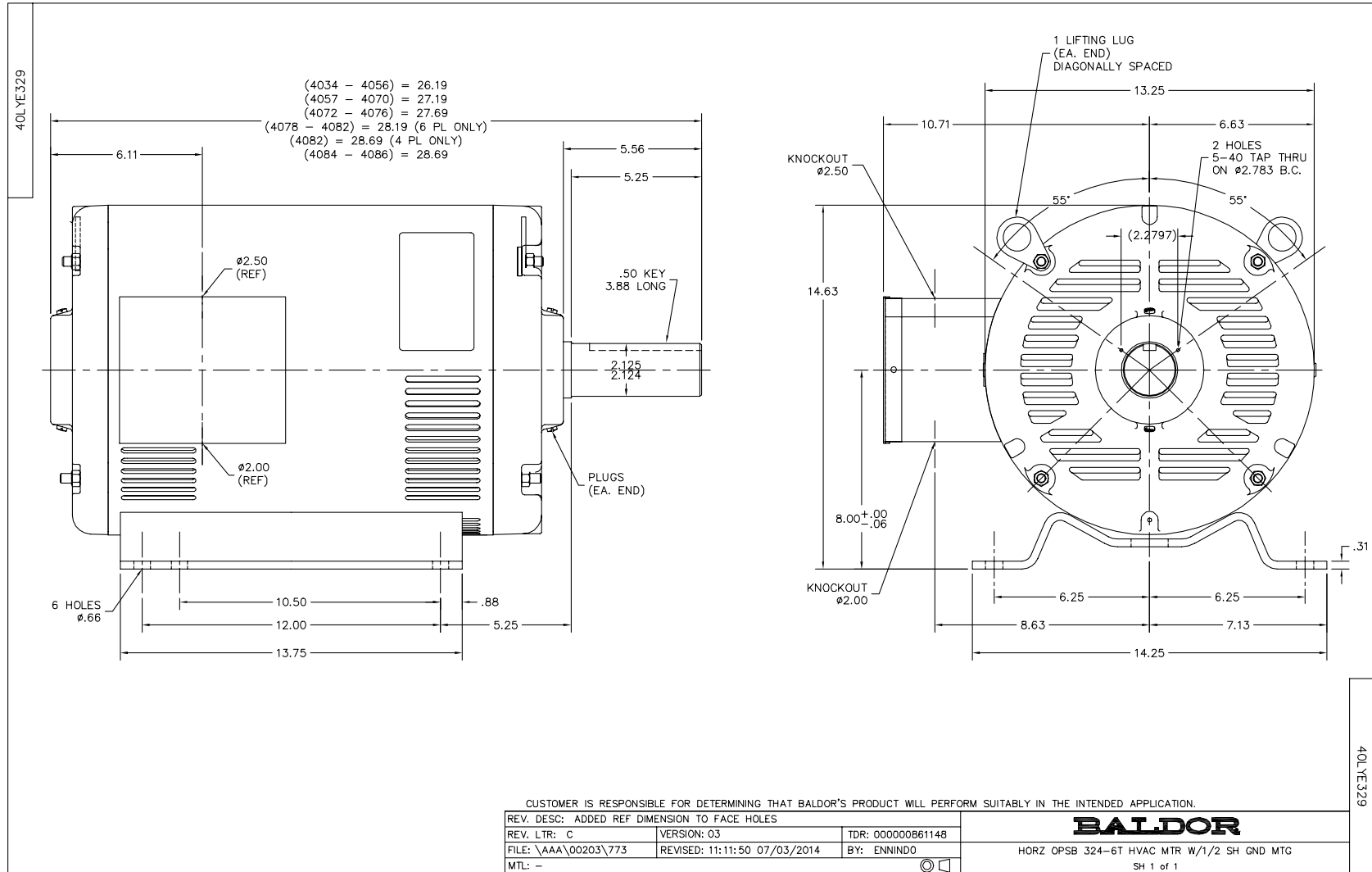
Nameplate Data				460 V, 60 Hz: High Voltage Connection	
Rated Output (HP)	30			Full Load Torque	132 LB-FT
Volts	230/460			Start Configuration	direct on line
Full Load Amps	76/38			Breakdown Torque	419 LB-FT
R.P.M.	1180			Pull-up Torque	184.3 LB-FT
Hz	60	Phase	3	Locked-rotor Torque	245.9 LB-FT
NEMA Design Code	A	KVA Code	H	Starting Current	245.6 A
Service Factor (S.F.)	1.15			No-load Current	16.2 A
NEMA Nom. Eff.	93.6	Power Factor	79	Line-line Res. @ 25°C	0.22 Ω
Rating - Duty	40C AMB-CONT			Temp. Rise @ Rated Load	38°C
S.F. Amps				Temp. Rise @ S.F. Load	48°C
				Locked-rotor Power Factor	29
				Rotor inertia	10.3 LB-FT ²

Load Characteristics 460 V, 60 Hz, 30 HP

% of Rated Load	25	50	75	100	125	150	S.F.
Power Factor	44	65	75	80	82	82	81
Efficiency	90.3	93.4	93.8	93.6	92.9	92	93.2
Speed	1194	1190	1186	1182	1177	1171	1179
Line amperes	18.3	23.4	30	37.5	46.1	55.8	42.7

Performance Graph at 460V, 60Hz, 30.0HP Typical performance - Not guaranteed values

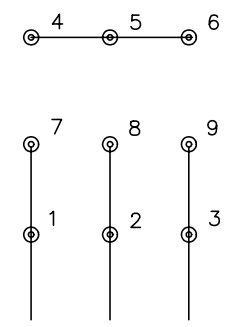




CD0005

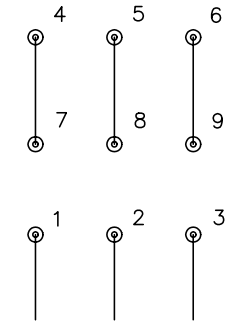


LOW VOLTAGE
(2Y)



LINE

HIGH VOLTAGE
(1Y)



LINE

NOTES:

1. INTERCHANGE ANY TWO LINE LEADS TO REVERSE ROTATION.
2. OPTIONAL THERMOSTATS ARE PROVIDED WHEN SPECIFIED.
3. ACTUAL NUMBER OF INTERNAL PARALLEL CIRCUITS MAY BE A MULTIPLE OF THOSE SHOWN ABOVE.
4. LEAD COLORS ARE OPTIONAL. LEADS MUST ALWAYS BE NUMBERED AS SHOWN.

REV. DESC: REVISE TO SHOW OPTIONAL COLORS			
REV. LTR: E	BY: JLP	REVISED: 01/19/99 10:15	TDR: 0171435
9000D		FILE: AAA00005140	MDL: -
		MTL: -	

BALDOR ELECTRIC Co.

3PH, DV, 9 LEADS

CD0005