

BALDOR® • **RELIANCE**

Product Information Packet

EWCM3212T

5HP,3450RPM,3PH,60HZ,182TCZ,3623M,OPSB,F

| Part Detail | | | | | | | |
|-------------|--------|----------------|-------|-------------|----------|---------------|------------|
| Revision: | B | Status: | PRD/A | Change #: | | Proprietary: | No |
| Type: | AC | Prod. Type: | 3623M | Elec. Spec: | 36WGS040 | CD Diagram: | CD0005 |
| Enclosure: | OPSB | Mfg Plant: | | Mech. Spec: | 36J678 | Layout: | 36LYJ678 |
| Frame: | 182TCZ | Mounting: | F1 | Poles: | 02 | Created Date: | 05-28-2015 |
| Base: | RG | Rotation: | R | Insulation: | F | Eff. Date: | 09-01-2016 |
| Leads: | 9#16 | | | | | Replaced By: | |
| Literature: | | Elec. Diagram: | | | | | |

| Nameplate NP1259L | | | | | | | | | | |
|-------------------|--------------|--|------|----|----------------|------|------|----|----|---|
| CAT.NO. | EWCM3212T | | | | | | | | | |
| SPEC. | 36J678S040G1 | | | | | | | | | |
| HP | 5 | | | | | | | | | |
| VOLTS | 230/460 | | | | | | | | | |
| AMP | 12/6 | | | | | | | | | |
| RPM | 3450 | | | | | | | | | |
| FRAME | 182TCZ | | | | HZ | 60 | | | PH | 3 |
| SER.F. | 1.15 | | CODE | K | DES | A | | CL | F | |
| NEMA-NOM-EFF | 86.5 | | PF | 91 | | | | | | |
| RATING | 40C AMB-CONT | | | | | | | | | |
| CC | 010A | | | | USABLE AT 208V | | 12.8 | | | |
| DE | 6207 | | | | ODE | 6205 | | | | |
| ENCL | OPSB | | SN | | | | | | | |

| Parts List | | |
|-------------|--|----------|
| Part Number | Description | Quantity |
| SA302308 | SA 36J678S040G1 | 1.000 EA |
| RA289402 | RA 36J678S040G1 | 1.000 EA |
| 36CB3004 | 36 CB CASTING W/1.09 DIA LEAD HOLE @ 6:0 | 1.000 EA |
| 51XB1016A08 | 10-16X 1/2HXWSSLD SERTYB | 2.000 EA |
| 11XW1032G06 | 10-32 X .38, TAPTITE II, HEX WSHR SLTD U | 1.000 EA |
| 36FE3200A25 | FREP ASSEMBLY FOR ROUTING PURPOSES | 1.000 EA |
| HA1103A08 | RODENT SCREEN, 36 FRAME, OPEN, FRONT END | 1.000 EA |
| 51XW1032A06 | 10-32 X .38, TAPTITE II, HEX WSHR SLTD S | 2.000 EA |
| HW1000A10 | #10 FLAT WASHER (SAE) | 2.000 EA |
| HW4500A01 | 1641B(ALEMITE)400 UNIV, GREASE FITT | 1.000 EA |
| HW4500A17 | 317400 ALEMITE GREASE RELIEF | 1.000 EA |
| HW5100A05 | WVY WSHR F/205 & 304 BRGS | 1.000 EA |
| 36EP1206A20 | PU ENDPLATE, MACH W/SCREENS - GREASER & | 1.000 EA |
| HA1102A09 | RODENT SCREEN 36 OPEN FAC | 2.000 EA |
| 51XW1032A06 | 10-32 X .38, TAPTITE II, HEX WSHR SLTD S | 4.000 EA |
| HW1000A10 | #10 FLAT WASHER (SAE) | 4.000 EA |
| HW4500A01 | 1641B(ALEMITE)400 UNIV, GREASE FITT | 1.000 EA |
| HW4500A17 | 317400 ALEMITE GREASE RELIEF | 1.000 EA |
| 10XN2520A26 | 1/4-20X 1 5/8 HEX HD | 4.000 EA |
| HW1001A25 | LOCKWASHER 1/4, ZINC PLT .493 OD, .255 I | 4.000 EA |
| 36CB4516 | 36 LIPPED CB LID | 1.000 EA |
| 51XW0832A07 | 8-32 X .44, TAPTITE II, HEX WSHR SLTD SE | 4.000 EA |
| HA2009A01 | 36-4613 SL ANOD. ALUM (STER | 1.000 EA |
| 80XN1032A06 | 10-32 X 3/8 SET SC HEX SOCK | 1.000 EA |

| Parts List (continued) | | |
|-------------------------------|--|-----------------|
| Part Number | Description | Quantity |
| HW2501D20 | KEY, 3/16 SQ X 2.250 | 1.000 EA |
| HA7000A01 | KEY RETAINER 7/8" DIA SHAFT | 1.000 EA |
| 85XU0407S04 | 4X1/4 U DRIVE PIN STAINLESS | 2.000 EA |
| MJ1000A02 | GREASE, POLYREX EM EXXON (USe 4824-15A) | 0.050 LB |
| MG1000Y03 | MUNSELL 2.53Y 6.70/ 4.60, GLOSS 20, | 0.022 GA |
| 36AD2004A01 | BAFFLE PLATE,MOD 36-SLTD BAND MTRS DELTA | 2.000 EA |
| HA3101A23 | THRUBOLT 1/4-20 X 9.625 DEMBY | 4.000 EA |
| LC0005E01 | CONN.DIA./WARNING LABEL (LC0005/LB1119N) | 1.000 EA |
| NP1259L | ALUM SUPER-E UL CSA-EEV CC NEMA PREMIUM | 1.000 EA |
| G0PA1000 | PKG GRP, PRINT PK1026A06 | 1.000 EA |
| PK3085X | FOAM SHAFT SUPPORT PRECUT 4-1/4 X 6-3/4 | 1.000 EA |
| MN416A01 | TAG-INSTAL-MAINT no wire (1000/bx) 11/14 | 1.000 EA |

AC Induction Motor Performance Data

Record # 53354 - Typical performance - not guaranteed values

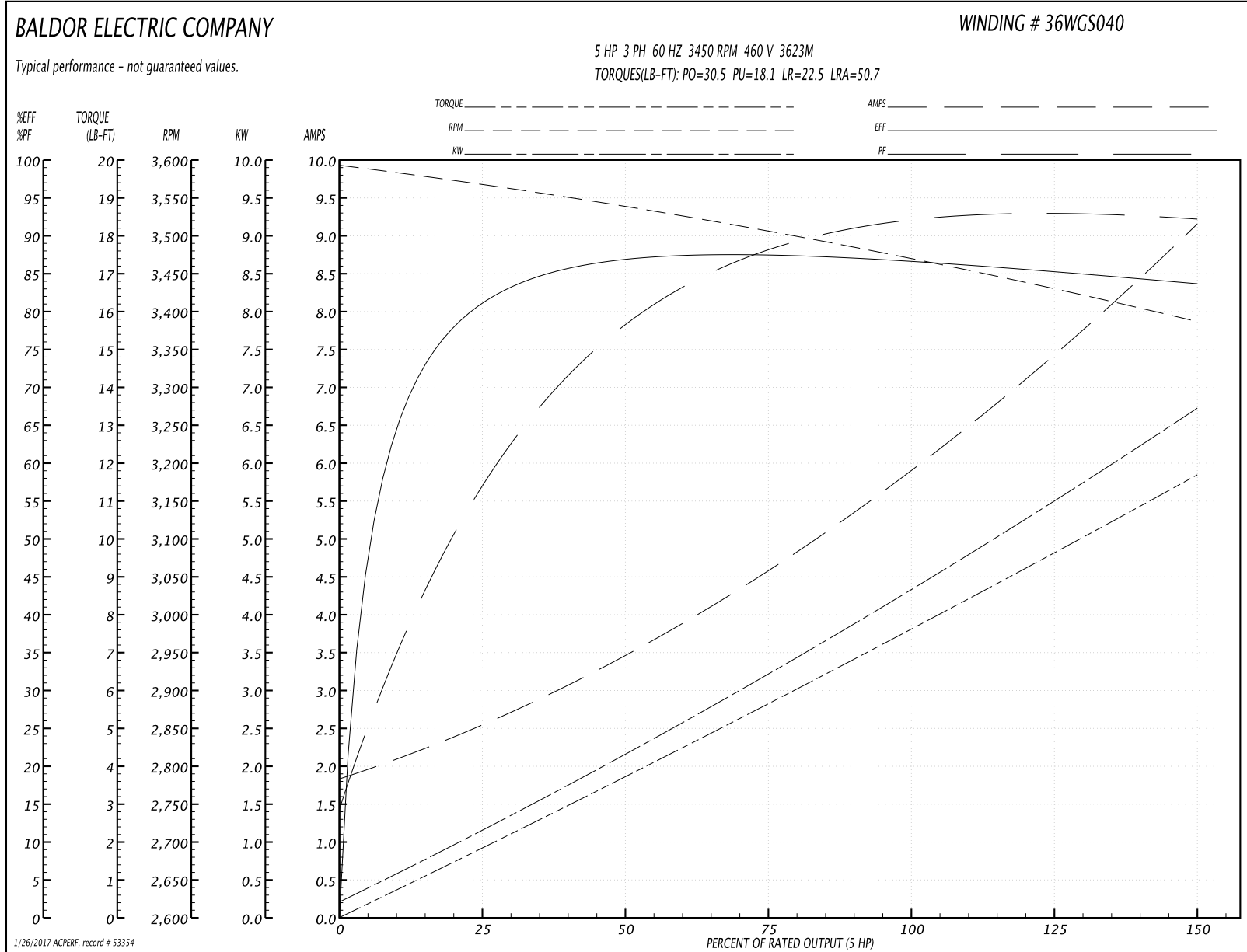
| | | |
|-------------------------------|--------------------|------------------------|
| Winding: 36WGS040-R014 | Type: 3623M | Enclosure: OPSB |
|-------------------------------|--------------------|------------------------|

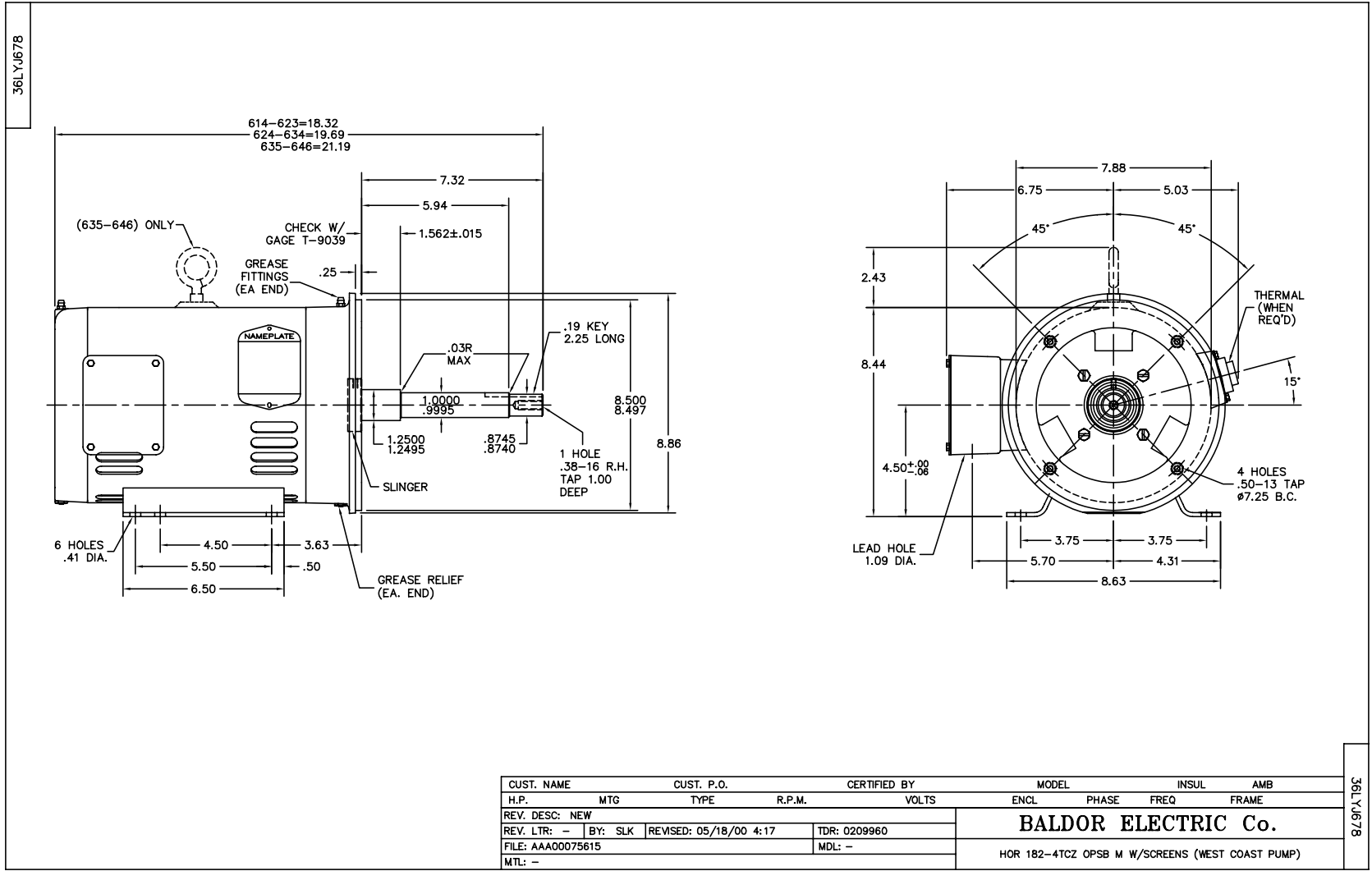
| Nameplate Data | | | | 460 V, 60 Hz: High Voltage Connection | |
|-----------------------|--------------|--------------|----|--|--------------------------|
| Rated Output (HP) | 5 | | | Full Load Torque | 7.66 LB-FT |
| Volts | 230/460 | | | Start Configuration | direct on line |
| Full Load Amps | 12/6 | | | Breakdown Torque | 30.5 LB-FT |
| R.P.M. | 3450 | | | Pull-up Torque | 18.1 LB-FT |
| Hz | 60 | Phase | 3 | Locked-rotor Torque | 22.5 LB-FT |
| NEMA Design Code | A | KVA Code | K | Starting Current | 50.7 A |
| Service Factor (S.F.) | 1.15 | | | No-load Current | 1.93 A |
| NEMA Nom. Eff. | 86.5 | Power Factor | 91 | Line-line Res. @ 25°C | 3.06 Ω |
| Rating - Duty | 40C AMB-CONT | | | Temp. Rise @ Rated Load | 34°C |
| S.F. Amps | | | | Temp. Rise @ S.F. Load | 42°C |
| | | | | Locked-rotor Power Factor | 50 |
| | | | | Rotor inertia | 0.103 LB-FT ² |

Load Characteristics 460 V, 60 Hz, 5 HP

| % of Rated Load | 25 | 50 | 75 | 100 | 125 | 150 | S.F. |
|-----------------|------|------|------|------|------|------|------|
| Power Factor | 62 | 81 | 88 | 91 | 92 | 93 | 92 |
| Efficiency | 81.1 | 86.7 | 87.6 | 86.9 | 85.5 | 83.7 | 86.1 |
| Speed | 3567 | 3537 | 3506 | 3469 | 3429 | 3387 | 3445 |
| Line amperes | 2.45 | 3.44 | 4.64 | 6.02 | 7.51 | 9.09 | 6.91 |

Performance Graph at 460V, 60Hz, 5.0HP Typical performance - Not guaranteed values





CD0005

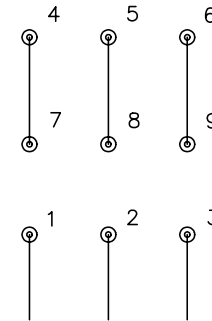


LOW VOLTAGE
(2Y)



LINE

HIGH VOLTAGE
(1Y)



LINE

NOTES:

1. INTERCHANGE ANY TWO LINE LEADS TO REVERSE ROTATION.
2. OPTIONAL THERMOSTATS ARE PROVIDED WHEN SPECIFIED.
3. ACTUAL NUMBER OF INTERNAL PARALLEL CIRCUITS MAY BE A MULTIPLE OF THOSE SHOWN ABOVE.
4. LEAD COLORS ARE OPTIONAL. LEADS MUST ALWAYS BE NUMBERED AS SHOWN.

| | | | |
|---|---------|-------------------------|--------------|
| REV. DESC: REVISE TO SHOW OPTIONAL COLORS | | | |
| REV. LTR: E | BY: JLP | REVISED: 01/19/99 10:15 | TDR: 0171435 |
| 9000D | | FILE: AAA00005140 | MDL: - |
| | | MTL: - | |

BALDOR ELECTRIC Co.

3PH, DV, 9 LEADS

CD0005