

# **BALDOR**® • *RELIANCE*

## **Product Information Packet**

# **IDDRPM407004R1**

**700HP, 1780/2400RPM, 460V, 3PH, DPGFV, RL4058**

Part Detail							
Revision:	-	Status:	PRD/A	Change #:		Proprietary:	No
Type:	AC	Prod. Type:		Elec. Spec:	L6225A	CD Diagram:	422927-001
Enclosure:	DPFV	Mfg Plant:		Mech. Spec:		Layout:	619660-001
Frame:	RL4058	Mounting:	F1	Poles:	04	Created Date:	04-09-2015
Base:		Rotation:	R	Insulation:	H	Eff. Date:	04-13-2015
Leads:						Replaced By:	
Literature:		Elec. Diagram:					

		DUTY	HP	RPM	AMPS	VOLTS	HZ		
	CONT		700	1780	777	460	60		
	CONT		700	2400	763	460	81		
<b>CAT.NO.</b>	IDDRPM407004R1			<b>SPEC. NO.</b>		P40R1327			
<b>SER.NO.</b>				<b>FR</b>	RL 4058	<b>INSUL</b>	H		
<b>PH.</b>	3	<b>MAX SAFE SPEED</b>		3750	<b>AMB.</b>	40	<b>MIN. AMB.</b> -25		
<b>DESIGN NO.</b>	L6225A			<b>TYPE</b>		<b>ENCL.</b>	DP		
<b>S.F.</b>	1.00			<b>D.E. BRG.</b>	95BC02J30X				
<b>ENCL MOD</b>	FORCE VENT			<b>O.D.E. BRG.</b>	80BC03J30X				

Parts List		
Part Number	Description	Quantity
WS286593	WS P40R1327	1.000 EA
RA282825	RA P40R1327	1.000 EA
000613006MY	NP-RPMAC INVERTER DUTY	1.000 EA
000692000FP	NP, WARNING LIFT INSTRUCTIONS	1.000 EA
000692000VD	LABEL WARNING	1.000 EA
418057747A	METAL FASTENER	8.000 EA
422927001	C/D LABEL	1.000 EA
004824015A	GREASE POLYREX EM	0.900 LB
034690002AL	1/4 SQ.HD.PIPE PLUG	1.000 EA
034690002AL	1/4 SQ.HD.PIPE PLUG	1.000 EA
035000001A	ALFTG 1/8" 1610-BL	1.000 EA
035000001A	ALFTG 1/8" 1610-BL	1.000 EA
036100090KA	HSHCS SHAFT BLOCK	4.000 EA
036100090KA	HSHCS SHAFT BLOCK	4.000 EA
036140001F	M30-3.5 X 45MM EYEBOLT	2.000 EA
036500013AB	HX NUT,ODE BRKT	4.000 EA
036500013AB	HX NUT,ODE BRKT	4.000 EA
418150003A	GREASE FITTING CAP	2.000 EA
419912001B	W WASHER	1.000 EA
602018077A	DRAIN	1.000 EA
602018077A	DRAIN	1.000 EA
609830005ACW	STUD,FRAME,FL4058,BOTT	2.000 EA
609830005ACZ	STUD,FRAME,FL4058	2.000 EA
708532016A	AIR BAFFLE	1.000 EA

Parts List (continued)		
Part Number	Description	Quantity
807532003AA	BRKT,RL400	1.000 EA
807532004AA	BRKT,RL400	1.000 EA
000613006NT	NAME PLATE IEC	1.000 EA
032018004DK	HHCS,DRIP COVER	4.000 EA
032018006CK	HHCS 3/8-16X3/4L PLATED	4.000 EA
034017014AB	LCKW 3/8 STD. PLATED	4.000 EA
036000012JB	M8-1.25 X 12MM HXHDC	3.000 EA
036000016HD	HXHCS	8.000 EA
036000020JB	HHCS M8-1.25X20L PLTD-250	6.000 EA
036000020JD	HHCS M8X20MM LONG 304S.S	5.000 EA
036000025JB	HHCS M8X25MM LONG PLATED	4.000 EA
036000055KB	M10-1.5 X 55MM HHCS	4.000 EA
036600008AD	FLTWSHR,T BLK SPT	8.000 EA
036620010AB	M10 EXT. TOOTH LK WASHER	1.000 EA
417733036B	GASKT,C/BOX BACKPLATE,REF 706310063E	1.000 EA
410978010F	FLANGE, INLET BLOWER HSG	1.000 EA
410978015A	GRILL, INLET FLANGE	1.000 EA
415000103F	TLUG	1.000 EA
417733004G	GASKT	2.000 EA
417733013E	GASKT L440	1.000 EA
417733014F	GASKT L440	1.000 EA
418014014T	ADAPT,C/BOX	1.000 EA
418018074A	GROUND LABEL G100 METRIC 160 D.C.	1.000 EA
418057256C	HHCS M10 25MM 440 IEC	1.000 EA

422919133	CVRKT BE	1.000 EA
422919133	CVRKT BE	1.000 EA
422919137	CVRKT BE	1.000 EA
422919137	CVRKT BE	1.000 EA
422919418	HHCVR,RL400	1.000 EA
610490001BW	3//2.5HP,3450//2850RPM,3PH,60//50HZ,145T	1.000 EA
611917002P	GASKT C400	1.000 EA
611965001E	BLOWER WHEEL	1.000 EA
613439049A	ADAPT,C/BOX,RL400	1.000 EA
706305301A	GUARD, SHAFT	1.000 EA
706310058E	KOBX CVR - 18.90 [480] X 19.49 [495]	1.000 EA
706310059F	ADAPT L440 REK	1.000 EA
706310063E	CBOX L440 1260A MAX	1.000 EA
706313062B	BLHSG FE MTG C400	1.000 EA
000640000P	TAG WINDING THERMOST	1.000 EA
004824007K	SPECIAL PAINT	0.300 EA
034180046KA	KEY 7/8X7/8X5-3/4L	1.000 EA
418018116	WARNING PLATE	1.000 EA

REL S.O.	-	VOLTS	460	ENCLOSURE	DPFV	WYE	CONN EQ	CKT OHMS	PER PHASE
FRAME	RL4058	AMPS	777	MAX SAFE RPM	3750	(AT BASE RATING, 25 °C)			
HP	700	DUTY	CONT	IM (AMPS)	216	R1	.00351	X1	.0342
BASE SPEED	1780	S.F.	1.0	P.F. @NL/FL	.038/.897	R2	.00266	X2	.0386
PHASE/HERTZ	3/60	AMB °C/INSUL	40/H	WK <sup>2</sup> (lb-ft <sup>2</sup> )	98			XM	1.26


**RATED FULL LOAD DATA**

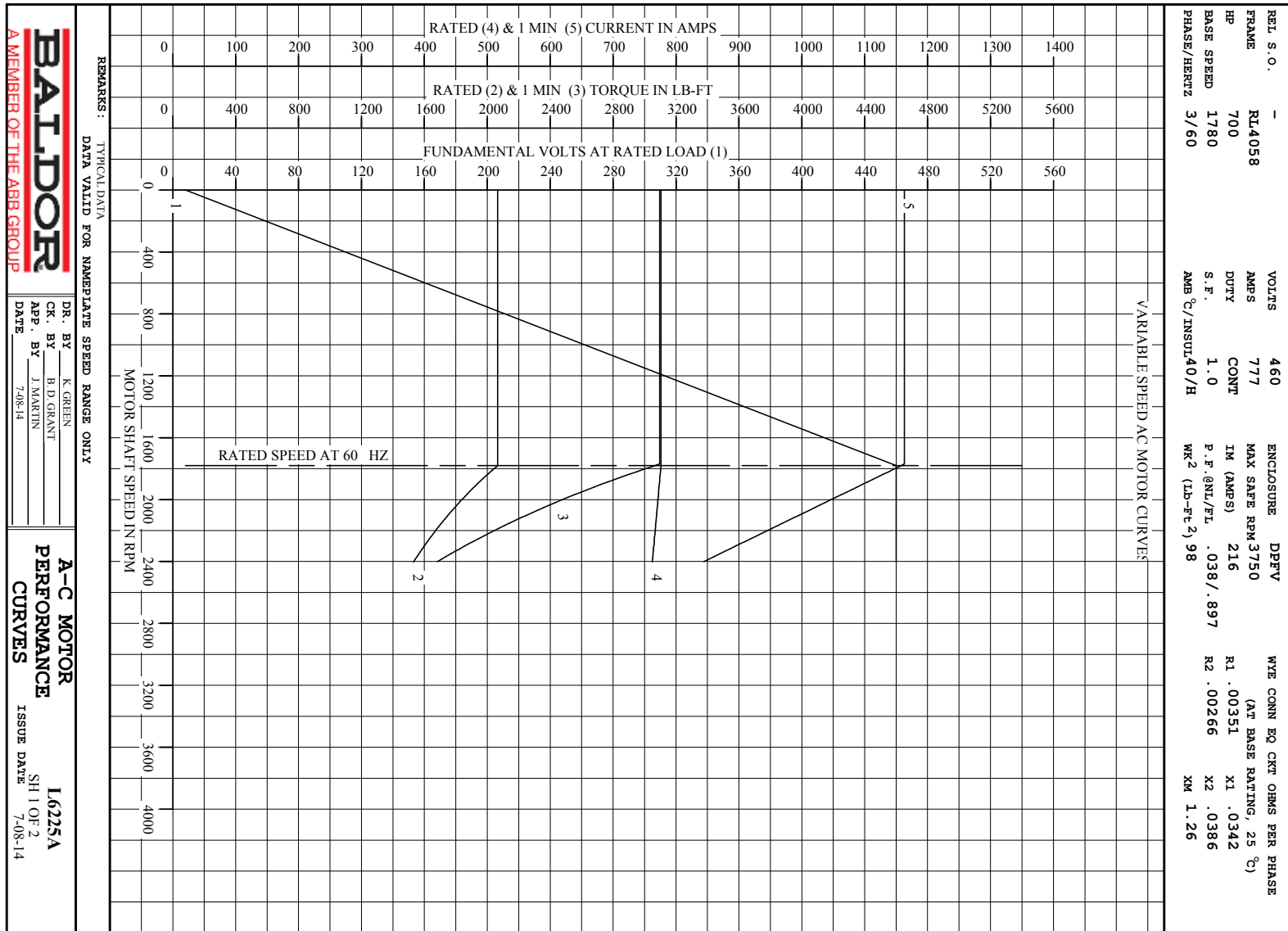
	RPM	HP	TORQUE LB-FT	FUND VOLTS	FREQ-HZ	AMPS
BASE SPEED	1781	700	2064	460	60	776
MAX SPEED	2404	701	1530	460	81	762
MIN SPEED	0	0	2064	8.14	.632	776

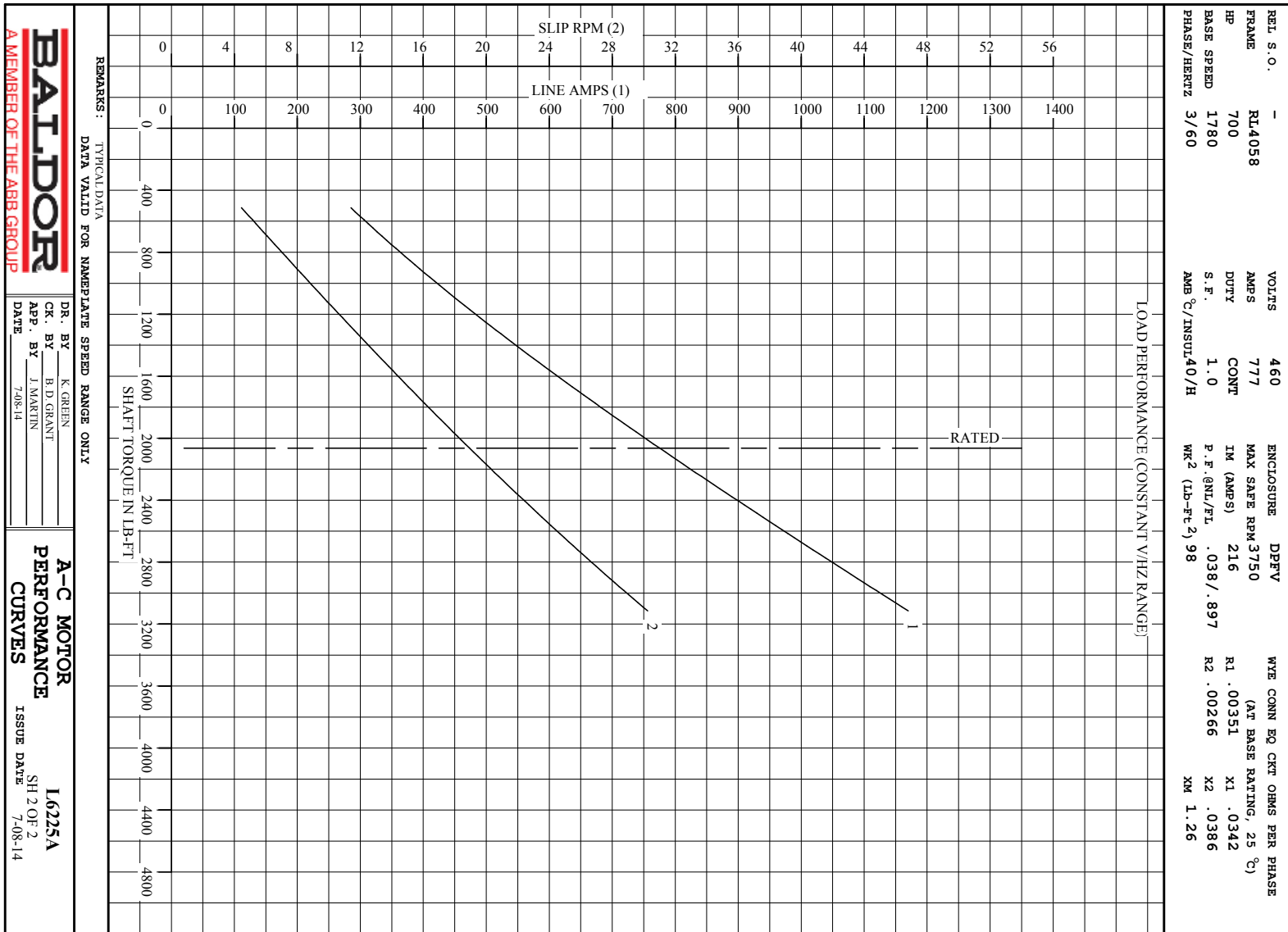
**LOAD PERFORMANCE AT BASE SPEED**

	RPM	HP	TORQUE LB-FT	FUND VOLTS	FREQ-HZ	AMPS
NO LOAD	1800	0	0	460	60	211
1/4	1796	175	513	460	60	286
1/2	1791	350	1028	460	60	429
3/4	1786	525	1544	460	60	595
FULL LOAD	1781	700	2064	460	60	776
O/L	1770	1044	3097	460	60	1163

REMARKS: TYPICAL DATA

 <p><b>A MEMBER OF THE ABB GROUP</b></p>	DR. BY	K. GREEN	<p><b>A-C MOTOR</b> <b>PERFORMANCE</b> <b>DATA</b></p> <p>ISSUE DATE 7-08-14</p>
	CR. BY	B. D. GRANT	
	APP. BY	J. MARTIN	
	DATE	7-08-14	

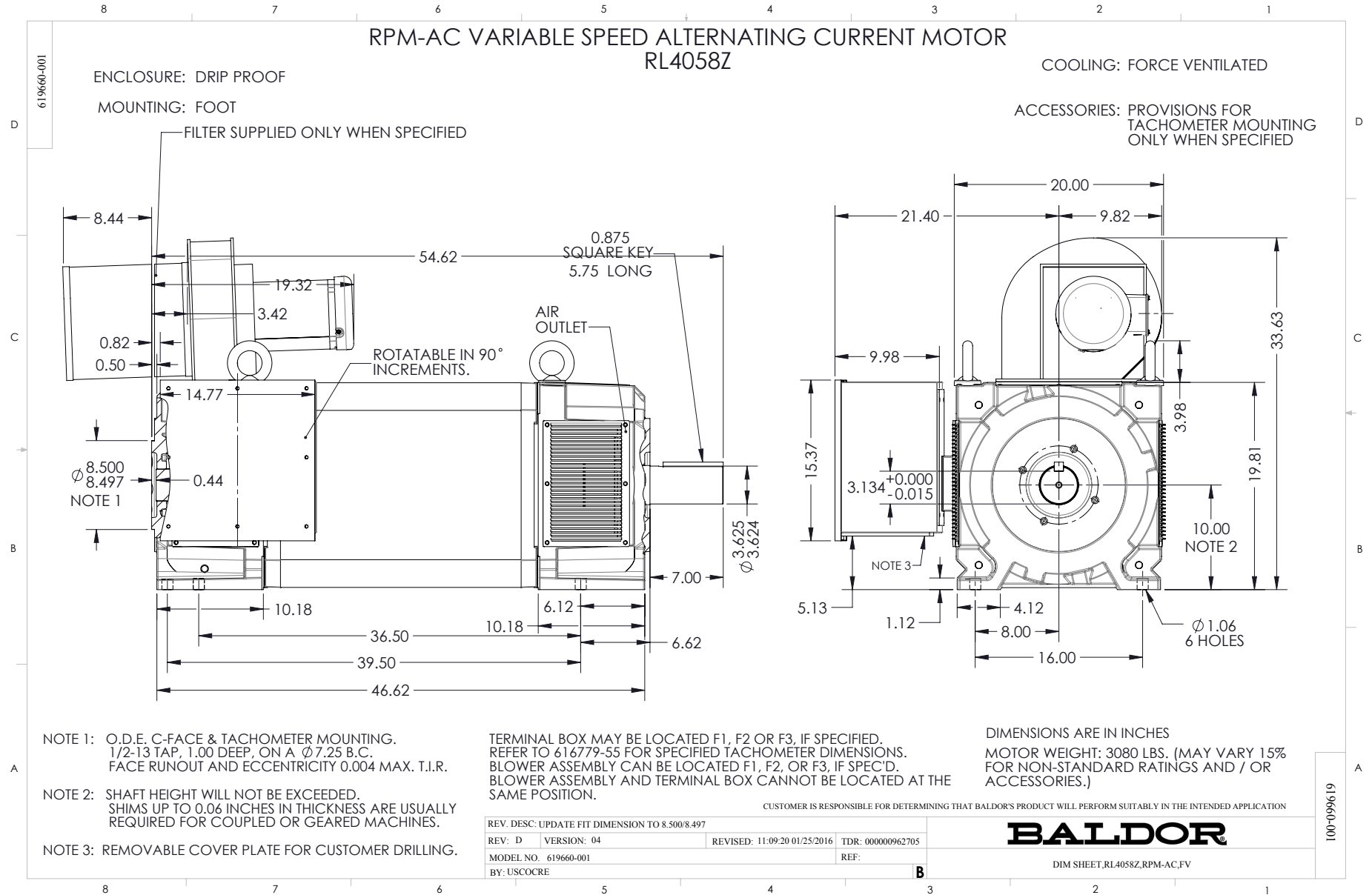




**BALDOR**  
A MEMBER OF THE ABB GROUP

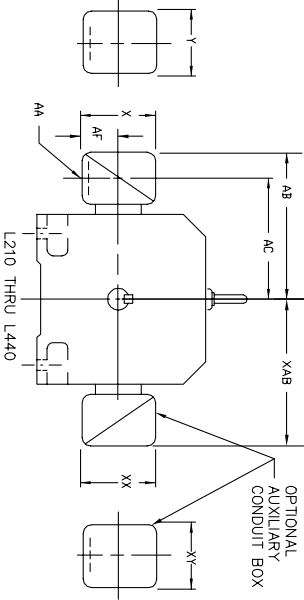
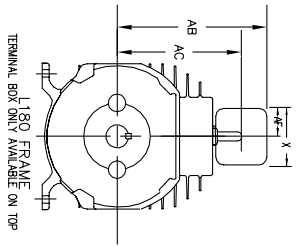
DR. BY K. GREEN  
CR. BY B. D. GRANT  
APP. BY J. MARTIN  
DATE 7-08-14

**A-C MOTOR**  
**PERFORMANCE**  
**CURVES**  
I6225A  
SH 2 OF 2  
ISSUE DATE 7-08-14



# RPM AC INDUSTRIAL ALTERNATING CURRENT MOTORS

STEEL, CAST IRON, MILL AND TERMINAL BOARD CONDUIT BOX DIMENSIONS  
NEMA FRAMES L180 thru L440 and IEC FRAMES DL112 thru DL280



DIMENSIONS ARE IN INCHES (mm)

STEEL TERMINAL BOX DIMENSIONS (MAXIMUM)						CAST IRON TERMINAL BOX DIMENSIONS (MAXIMUM)											
FRAME SIZE	MAX AMPS	AK(1)	AB	AC	AF	STANDARD SIZE	MAX AMPS	AK(2)	AB	AC	AF						
L180	40	1.38	8.62	6.94	2.25	4.50	5.00	706320-3-A									
L180	75	2	9.38	7.50	2.81	5.62	6.12	706320-3-A	L180	60	1	9.38	7.50	2.50	5.00	5.75	706320-4-C
L210	160	2	12.75	9.19	4.25	8.44	4.25	706320-3-A & D	L210	140	3	14.25	10.50	3.62	8.00	9.25	706320-12-B
L210	305	4	14.62	10.50	5.38	10.56	9.00	706320-16-A & D	L210	210	4	15.62	11.38	4.12	9.50	10.50	706320-13-A
L250	500	5	18.38	13.25	6.50	12.10	14.62	706320-16-A & D	L210	510	5	18.50	13.25	7.00	12.75	15.00	706320-14-D
L250	160	2	13.75	10.63	4.25	8.44	7.63	706320-3-A & D	L250	140	3	15.38	11.50	3.62	8.00	9.25	706320-12-B
L250	305	4	15.75	11.56	5.38	10.56	9.00	706320-16-A & D	L250	210	4	16.62	12.44	4.12	9.50	10.50	706320-13-A
L250	500	5	19.50	14.31	6.50	12.10	14.62	706320-16-A & D	L250	510	5	19.62	14.31	7.00	12.75	15.00	706320-14-D
L280	160	2	14.00	10.44	4.25	8.44	7.25	706320-3-A & D	L280	140	3	15.50	11.75	3.62	8.00	9.25	706320-12-B
L280	305	4	15.88	11.75	5.38	10.56	9.00	706320-16-A & D	L280	210	4	16.88	12.62	4.12	9.50	10.50	706320-13-A
L280	500	5	19.62	14.50	6.50	12.10	14.62	706320-16-A & D	L280	510	5	19.75	14.50	7.00	12.75	15.00	706320-14-D
L320	160	2	13.38	11.81	4.25	8.44	7.25	706320-3-A & D	L320	140	3	13.75	12.00	3.62	8.00	9.25	706320-12-B
L320	305	4	17.25	13.12	5.38	10.56	9.00	706320-16-A & D	L320	210	4	17.12	12.88	4.12	9.50	10.50	706320-13-A
L360	500	5	21.00	15.88	6.50	12.10	14.62	706320-16-A & D	L360	510	5	21.12	15.88	7.00	12.75	15.00	706320-14-D
L360	160	2	16.38	12.81	4.25	8.44	7.25	706320-3-A & D	L360	140	3	16.75	13.00	3.62	8.00	9.25	706320-12-B
L360	305	4	18.25	14.12	5.38	10.56	9.00	706320-16-A & D	L360	210	4	18.12	13.88	4.12	9.50	10.50	706320-13-A
L360	500	5	22.00	16.88	6.50	12.10	14.62	706320-16-A & D	L360	510	5	22.12	16.88	7.00	12.75	15.00	706320-14-D

MILL CONDUIT BOX DIMENSIONS (MAXIMUM)					
FRAME SIZE	MAX AMPS	AA	AB	AC	AF
L210	160	(3)	10.78	8.41	3.50
L250	160	(3)	11.84	9.47	3.50
L280	160	(3)	12.75	10.75	3.50
L320	590	(3)	14.75	11.34	4.50
L360	590	(3)	15.47	12.06	4.50
L400	590	(3)	16.47	13.06	4.50
L440	590	(3)	18.00	15.00	4.50
L440	1260	(3)	27.38	19.88	6.06

IEC CONDUIT BOX DIMENSIONS WITH TERMINAL BOARDS (MAXIMUM)											
FRAME NEMA/IEC	AMPS	AA	AB (mm)	AC (mm)	AF (mm)	X (mm)	Y (mm)	PART NUMBER	PART NUMBER	PART NUMBER	PART NUMBER
L180/UL112	85	<4>	9.38(239)	7.50(191)	2.81(72)	5.62(143)	6.12(156)	706320-5-A or 4-C	706320-5-A or 4-C	706320-5-A or 4-C	706320-5-A or 4-C
L210/UL132	100	--	10.77(274)	9.04(230)	3.74(95)	7.48(190)	7.48(190)	706310-56-A	706310-56-A	706310-225-R	706310-225-R
L250/UL160	160	--	11.63(296)	9.62(245)	4.41(112)	8.82(224)	8.82(224)	706310-56-B	706310-56-B	706310-225-R	706310-225-R
L320/UL180	160	--	12.09(307)	10.36(264)	3.74(95)	7.48(190)	7.48(190)	706310-56-A	706310-56-A	706310-225-R	706310-225-R
L360/UL200	160	--	12.95(329)	10.94(278)	4.41(112)	8.82(224)	8.82(224)	706310-56-B	706310-56-B	706310-225-R	706310-225-R
L400/UL250	160	--	13.58(345)	11.57(294)	4.41(112)	8.82(224)	8.82(224)	706310-56-B	706310-56-B	706310-225-R	706310-225-R
L440/UL280	160	--	13.58(345)	11.57(294)	4.41(112)	8.82(224)	8.82(224)	706310-56-B	706310-56-B	706310-225-R	706310-225-R
L360/UL200	800	--	20.06(510)	17.53(446)	6.20(158)	14.39(366)	14.39(366)	706310-63-B	706310-63-B	706310-63-B	706310-63-B
L360/UL250	800	--	20.78(528)	18.25(464)	6.20(158)	14.39(366)	14.39(366)	706310-63-B	706310-63-B	706310-63-B	706310-63-B
L400/UL250	800	--	21.75(553)	19.25(489)	6.20(158)	14.39(366)	14.39(366)	706310-63-B	706310-63-B	706310-63-B	706310-63-B
L400/UL280	1260	--	25.94(659)	18.44(468)	6.06(154)	18.50(470)	18.50(470)	706310-63-E	706310-63-E	706310-63-E	706310-63-E
L440/UL280	1260	--	27.38(696)	19.88(505)	6.06(154)	18.50(470)	18.50(470)	706310-63-E	706310-63-E	706310-63-E	706310-63-E
L440/UL280	1300	--	30.38(772)	21.38(543)	12.44(316)	24.00(610)	24.00(610)	706310-360-A	706310-360-A	706310-360-A	706310-360-A

DEPT. AUXILIARY CONDUIT BOX DIMENSIONS (MAXIMUM)											
FRAME SIZE	XY	YAB	XY	PART NUMBER	FRAME SIZE	XY	YAB	XY	XY	XY	PART NUMBER
L210/UL132	7.48	4.25	4.25	602007-56-A	L210/UL132	10.88	8.00	8.00	8.00	8.00	706310-3-B
L250/UL160	8.44	4.25	4.25	602007-56-A	L250/UL160	11.88	8.00	8.00	8.00	8.00	706310-3-B
L280/UL180	9.12	4.25	4.25	602007-56-A	L280/UL180	12.62	8.00	8.00	8.00	8.00	706310-3-B
L320/UL200	10.00	4.25	4.25	602007-56-A	L320/UL200	13.50	8.00	8.00	8.00	8.00	706310-3-B
L360/UL225	11.00	4.25	4.25	602007-56-A	L360/UL225	14.50	8.00	8.00	8.00	8.00	706310-3-B
L400/UL250	12.00	4.25	4.25	602007-56-A	L400/UL250	15.50	8.00	8.00	8.00	8.00	706310-3-B
L440/UL280	13.12	4.25	4.25	602007-56-A	L440/UL280	16.62	8.00	8.00	8.00	8.00	706310-3-B

(1) \*AA\* CONDUIT.  
 (2) \*AF\* PIPE TAP.  
 (3) \*CONDUIT\* CONDUIT.  
 (4) 2" DN -5A or 1" TAP DN -4C  
 CONDUIT BOX CAN BE ROTATED 360°. CONDUIT BOX MAY BE LOCATED FL, F2 OR F3 AS SPECIFIED

100-6671919

CUSTOMER IS RESPONSIBLE FOR DETERMINING THAT BALDOR'S PRODUCT WILL PERFORM SUITABLY IN THE INTENDED APPLICATION.

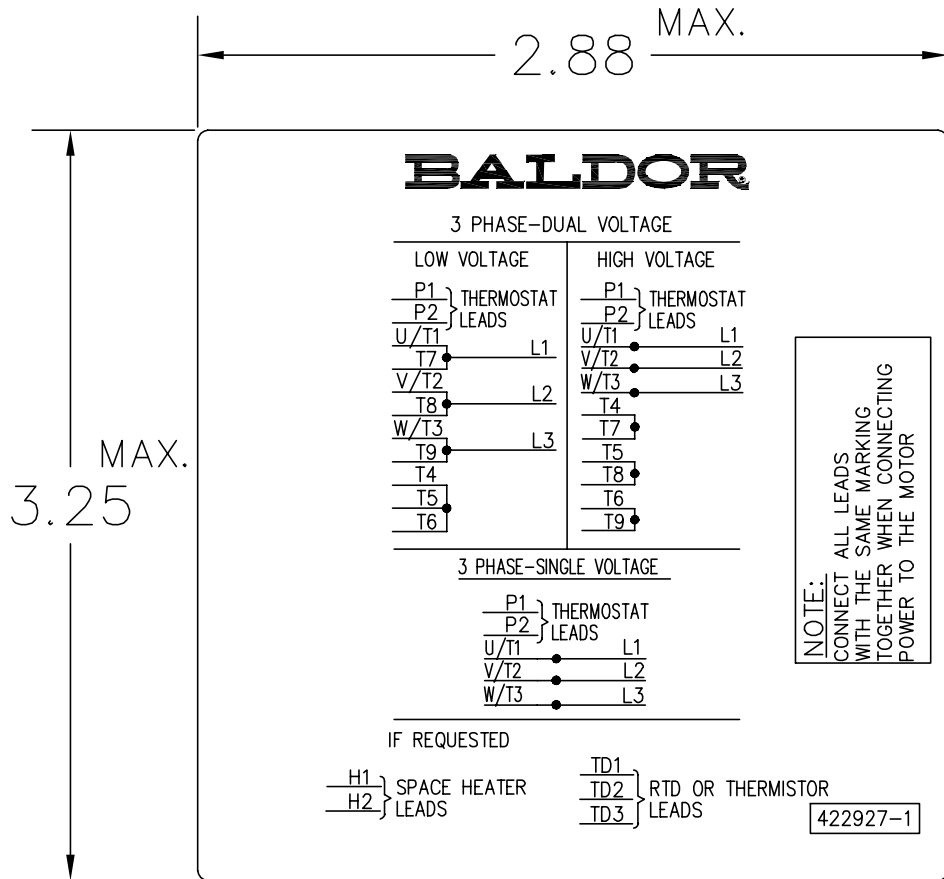
REV. DESC: ADD 1260 AMP L400, ADD 1300 AMP L440	TDR: 000000B04459
REV. LTR: A	VERSION: 01
FILE: \RGG\00003\688	REVISED: 10: 23: 58 06/18/2013
MTL: -	BY: RGGWT



DIM SHT NEMA L180 THRU L440 & IEC DL112 THRU DL280

SH 1 of 1

422927-001



NOTE:  
DATA TO BE SIZED SO THAT IT FITS INTO MATERIAL DECAL DIMENSIONS. MAKE LETTERS & NUMBERS AS LARGE AS POSSIBLE.

MATERIAL: CERAMATIC DGF-P4  
PERMA GRIP ADHESIVE

ALL LETTERS, NUMBERS AND LINES TO BE BLACK ON WHITE BACKGROUND.

422927-001

REV. DESC: CHANGE BACKGROUND COLOR FROM GOLD TO WHITE		
REV. LTR: B	VERSION: 02	TDR: 000000788708
FILE: \RGG\00000\203	REVISED: 08:09:29 03/04/2013	
MTL: -	BY: RGGWT	

**BALDOR**

EXTERNAL CONNECTION LABEL

SH 1 of 1

Marketing maintained PDF of MN406:

<http://www.baldor.com/support/Literature/Load.ashx/MN406?ManNumber=MN406>