

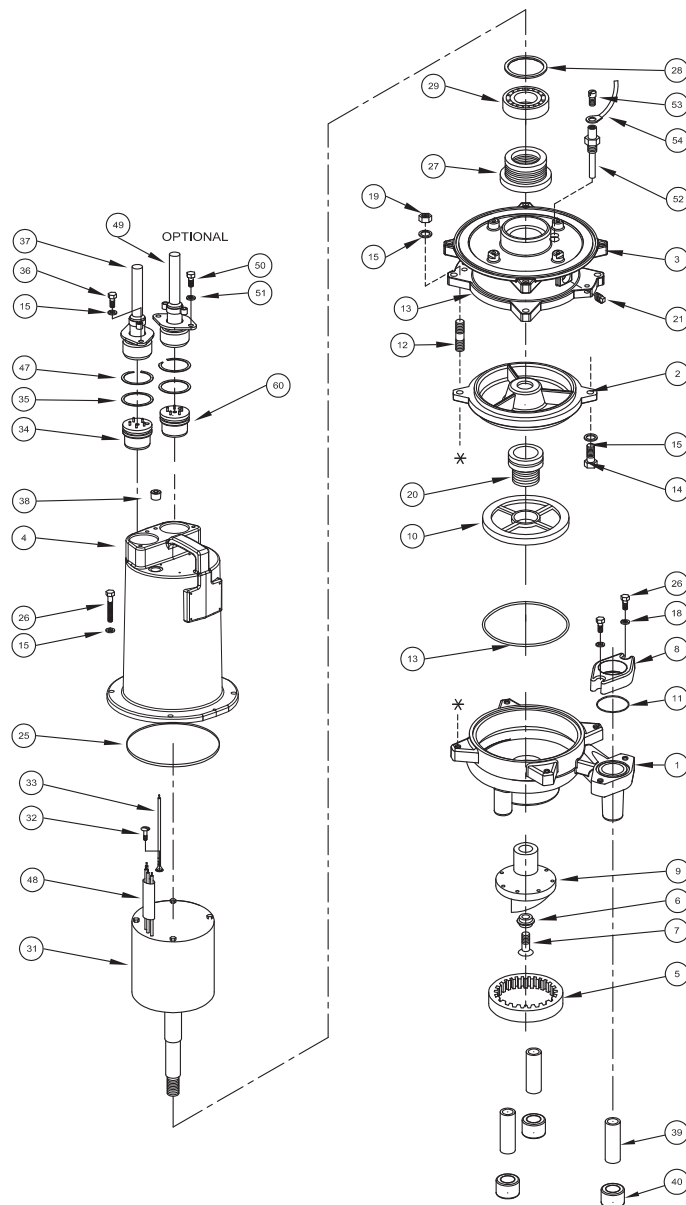
BARNES • PROSSER • CROWN SERVICE PARTS

MODEL	PART NO.	MODEL	PART NO.
High-Flow		High-Head	
SGVF2002L	110614	SGVH2002L	110620
SGVF2022L	110609	SGVH2022L	110615
SGVF2062L	110610	SGVH2062L	110616
SGVF2032L	110611	SGVH2032L	110617
SGVF2042L	110612	SGVH2042L	110618
SGVF2052L	110613	SGVH2052L	110619



Order Online: www.PumpCatalog.com

Manual: 110629



Continued →

Series SGVF & SGVH

Submersible Grinder
2HP, 3450RPM



www.cranepumps.com

BARNES • PROSSER • CROWN SERVICE PARTS

PARTS KITS

Seal Repair Kit.....P/N: 113299

Item #'s 6,7,13,14,15,19,20,21,25,26,27,32,35,47

Overhaul Kit P/N: 115946

113229 & Item #'s 28, 29, 55

Cutter Kit - SGVFP/N: 113300

Item #'s 5,6,7,9,15,19

Cutter Kit - SGVH.....P/N: 113300B

Item #'s 5,6,7,9,15,19

PARTS LIST

ITEM	QTY	PART NO.	DESCRIPTION
1	1	108344	Volute
2	1	108880	Seal Plate
3	1	108879	Intermediate Coupling
4	1	108342A 110328B	Motor Housing (STD) Motor Housing (Option)
5	1	082085A 082085B	Shredding Ring (SGVF) Shredding Ring (SGVH)
6	1	067556	Washer
7	1	070704	Skhd Screw, 1/4-20 x .75" SS
8	1	108369	Discharge Flange 1-1/4" NPT
9	1	082088	Radial Cutter
10	1	109026 109026TD	Impeller, 5.62" Dia. (SGVH) Impeller, 5.18" Dia. (SGVF)
11	1	625-01558	O-Ring (-223)
12	4	108886	Stud, 5/16-18 x 2.25" SS
13	2	067564	Square Ring
14	2	1-156-1	Screw, 5/16-18 x 1" SS
15	12	026322	Lockwasher, 5/16" SS
16	A/R	-----	LOCTITE™ RC609
17	A/R	-----	LOCTITE 242
18	2	062941	5/16" Flatwasher
19	4	15-19-1	Hex Nut 5/16-18, SS
20	1	110395	Seal, outer C\C\B (STD)
21	3	003217	Pipe Plug, .25" NPT
22	A/R	-----	Permatex Sealent 2C
24	3¼ Qts. 1 Qts	029034	Cooling Oil - Mtr. Housing Cooling Oil - Seal Cavity
25	1	027269	Square Ring
26	6	1-131-1	Screw, 5/16-18 x 1.25", SS
27	1	111131	Seal, inner C\C\B (STD)
28	1	061143	Retaining Ring
29	1	Q10-36-E4	Ball Bearing
31	1	110397BG 067571BG 067572BG 085700BG	Motor: 2HP, 200/240 Volt, 1 Phase 2HP, 200 Volt, 3 Phase 2HP, 240/480 Volt, 3 Phase 2HP, 600 Volt, 3 Phase

ITEM	QTY.	PART NO.	DESCRIPTION
32	1	016660	Self Tapping Screw
33	1	105111A	Ground Wire Assy, 10GA.
34	1	103586	Terminal Block
35	1 or 2	2-31051-224	O-Ring
37	1	109492XC	Cord Set, Power 30Ft. (STD)
38	1	014270	Pipe Plug, C'sunk, 3/8" NPT
39	3	110660	1/2" x 2-1/2" Nipple
40	3	105814	1/2" PVC Pipe Cap
47	1 or 2	105197	Retaining Ring
48	1 or 2	625-02117	Sleeving
55	4 3	105150 625-00163	Terminal Conn., 200/240V, 3P Terminal Conn., 480V, 3P
56	3	105149A	Jumper Wire, 200/240, 3PH
OPTIONAL			
49	1	103741XC 113288XC	Cord Set, Temp, 30FT. Cord Set, Moist & Temp, 30FT.
50	2	1-156-1	Screw, 5/16-18 x .75" SS
51	2	026322	Lockwasher, 5/16" SS
52	2	087115	Moisture Sensor Probe
53	2	038156	Pan Hd Screw #6-32 x .38"
54	2	105106	Wire Assy, Moist. Sensor
57	1	105111	Ground Wire
60	1	103584 113272	Terminal Block, Temp Sensor Terminal Block, Moist & Temp

Contact your local Distributor or the Factory for other impeller sizes, seal materials, cord lengths and other optional equipment.

END

Order Online: www.PumpCatalog.com

SECTION 3B
PAGE 20
DATE 12/16

CRANE
®

PUMPS & SYSTEMS

A Crane Co. Company

USA: (937) 778-8947 • Canada: (905) 457-6223 • International: (937) 615-3598