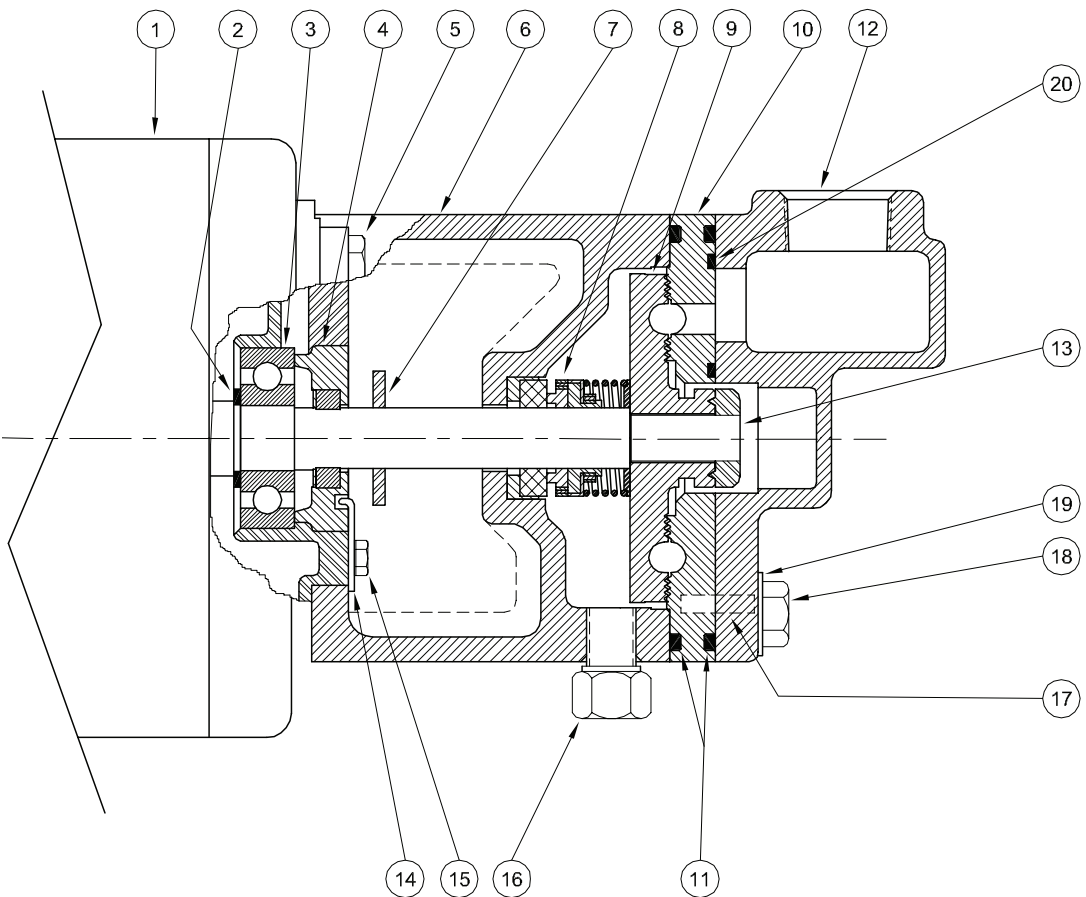


Turbines - Close Coupled



1 - MOTORS		
RPM & PHASE	PART NUMBER	HP
1725RPM - OPEN DRIP PROOF - 1 PHASE		
1725 RPM Single Phase (ODP)	09755	1/4
3450RPM - OPEN DRIP PROOF - 1 PHASE		
3450 RPM Single Phase (ODP)	09896 09897 09898	1/3 1/2 3/4
3450/2900 RPM - OPEN DRIP PROOF 3 PHASE		
3450/2900 RPM Three Phase (ODP)	09704 09637 09622	1/3 1/2 3/4
3450/2900 RPM - TOTALLY ENCLOSED		
3450/2900 RPM Single Phase (TEFC)	09793	3/4
3450/2900 RPM Three Phase (TEFC)	09794 20472 (60/50)	3/4 1
2900 RPM - 50 Hz OPEN DRIP PROOF & TOTALLY ENCLOSED		
2900 RPM Single Phase (ODP)	09896-50 09897-50 09898-50 20142	1/3 1/2 3/4 1
2900 RPM Three Phase (TEFC) - 60/50	20472	1

SYMBOL NUMBER	PART NUMBER	QTY	DESCRIPTION
12	09525-B	1	Housing, Raceway
13	02258-A	1	Locknut, Impeller
14	07576	1	Lock, Adjusting Screw
15	07577	1	Screw, #10 x 3/8" Lg
16	04236-A	1	Pipe Plug, 1/4" Hex Hd
17	20101	1	Pin, Locating - 3/16 x 3/4" Lg
18	01929-B	4	Cap Screw, 3/8 x 1 1/2" Lg
19	20056	4	Lockwasher
20	21472	1	O-Ring Gasket - Viton
	22065	1	O-Ring Gasket - Teflon
	22843	1	O-Ring Gasket - EPT**

(**) For hot water or caustic service.

NOTE 1: Impeller and raceway must be ordered as a repair kit.
NOT available individually.

SYMBOL NUMBER	PART NUMBER	QTY	DESCRIPTION
2	02726	1	Washer - Bearing Back Up
3	09164	1	Ball Bearing - Pump End
4	01332-B	1	Screw, Impeller Adjusting
5	03121-B	4	Screw, 1/4-20 x 3/4
6	09521-C	1	Frame
7	08105	1	Slinger Washer
8	08514-C	1	Mechanical Seal - Buna-N
	09762	1	Mechanical Seal - Viton
	20764-C	1	Mechanical Seal - EPDM**
9	SA09524-A-5	1	Impeller - 5/16 CT5M - SS
	SA09524-A-6	1	Impeller - 3/8 CT6M - SS
	SA09524-A-7	1	Impeller - 7/16 CT7M - SS
10	20706-5	1	Raceway, Plate Type - 5/16 CT5M - SS
	20706-6	1	Raceway, Plate Type - 3/8 CT6M - SS
	20706-7	1	Raceway, Plate Type - 7/16 CT7M - SS
11	09530	2	O-Ring Gasket - Buna-N
	09699	2	O-Ring Gasket - Viton
	22134	2	O-Ring Gasket - EPT**
	09530-T	2	O-Ring Gasket - Teflon

REPAIR KITS FOR CT-SS SERIES PUMPS

REPAIR KIT P/N (STD Buna-N)	MODEL	REPAIR KIT P/N (Viton)	MODEL	REPAIR KIT P/N (EPT)	MODEL
20158-5-SS	CT5M-SS	20158-5-MV-SS	CT5MV-SS	20158-5-ME-SS	CT5ME-SS
20158-6-SS	CT6M-SS	20158-6-MV-SS	CT6MV-SS	20158-6-ME-SS	CT6ME-SS
20158-7-SS	CT7M-SS	20158-7-MV-SS	CT7MV-SS	20158-7-ME-SS	CT7ME-SS

KIT INCLUDES: Impeller, Raceway, Shaft Seal, O-Ring Gaskets, Impeller Locknut and Instructions.