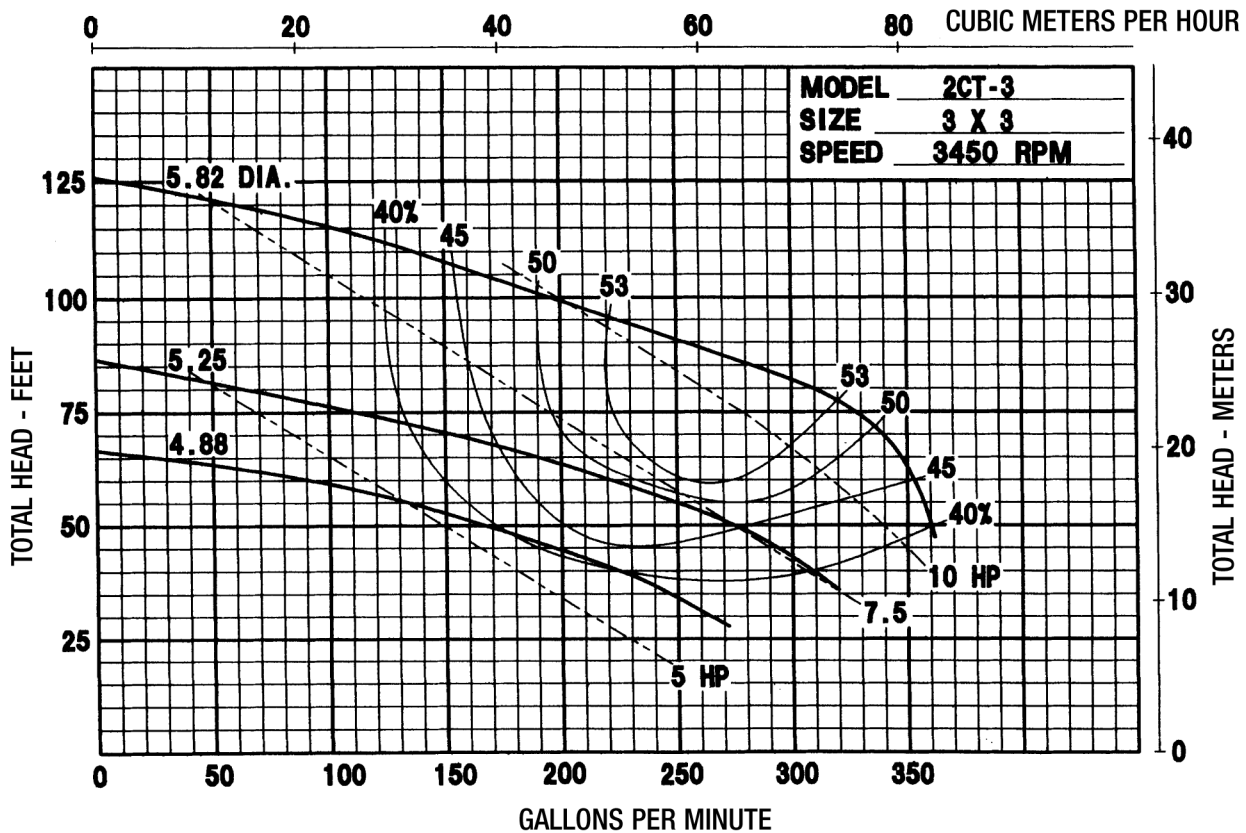
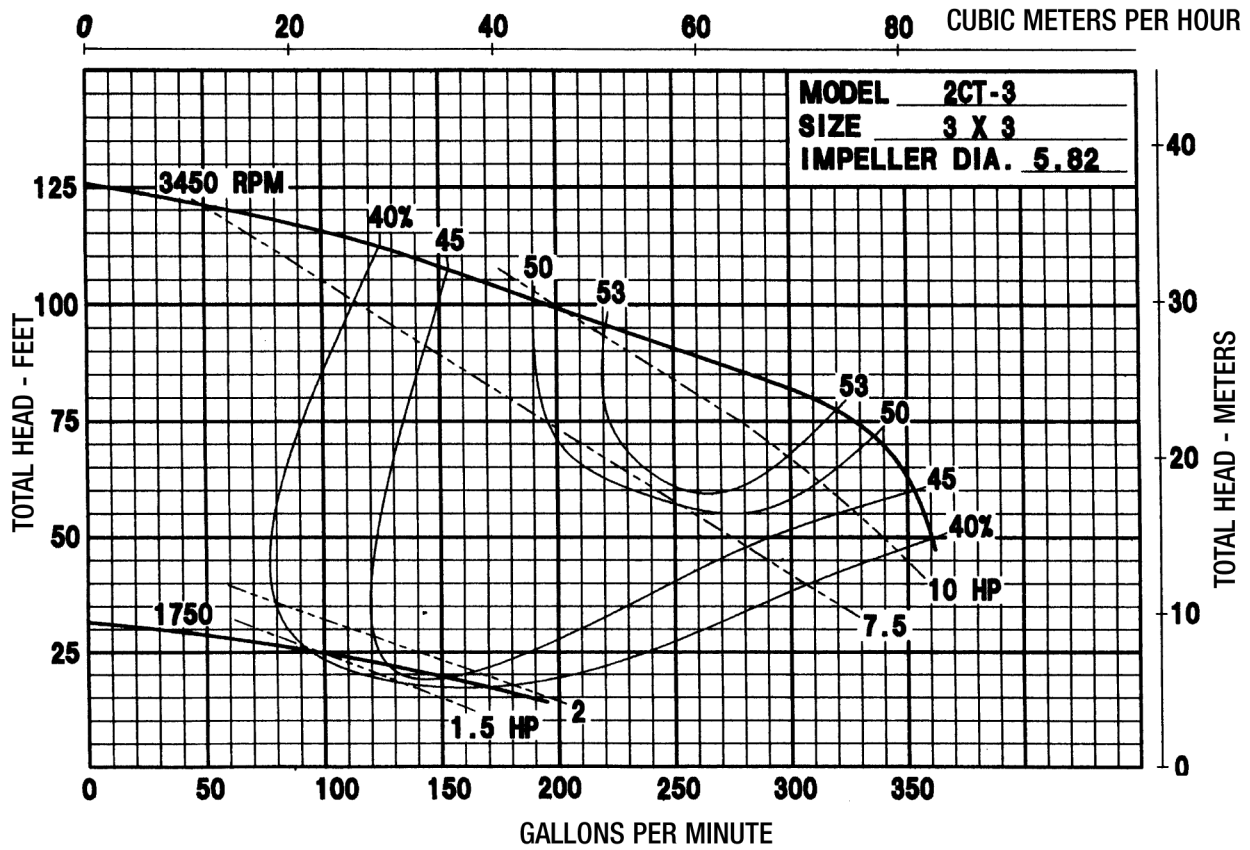
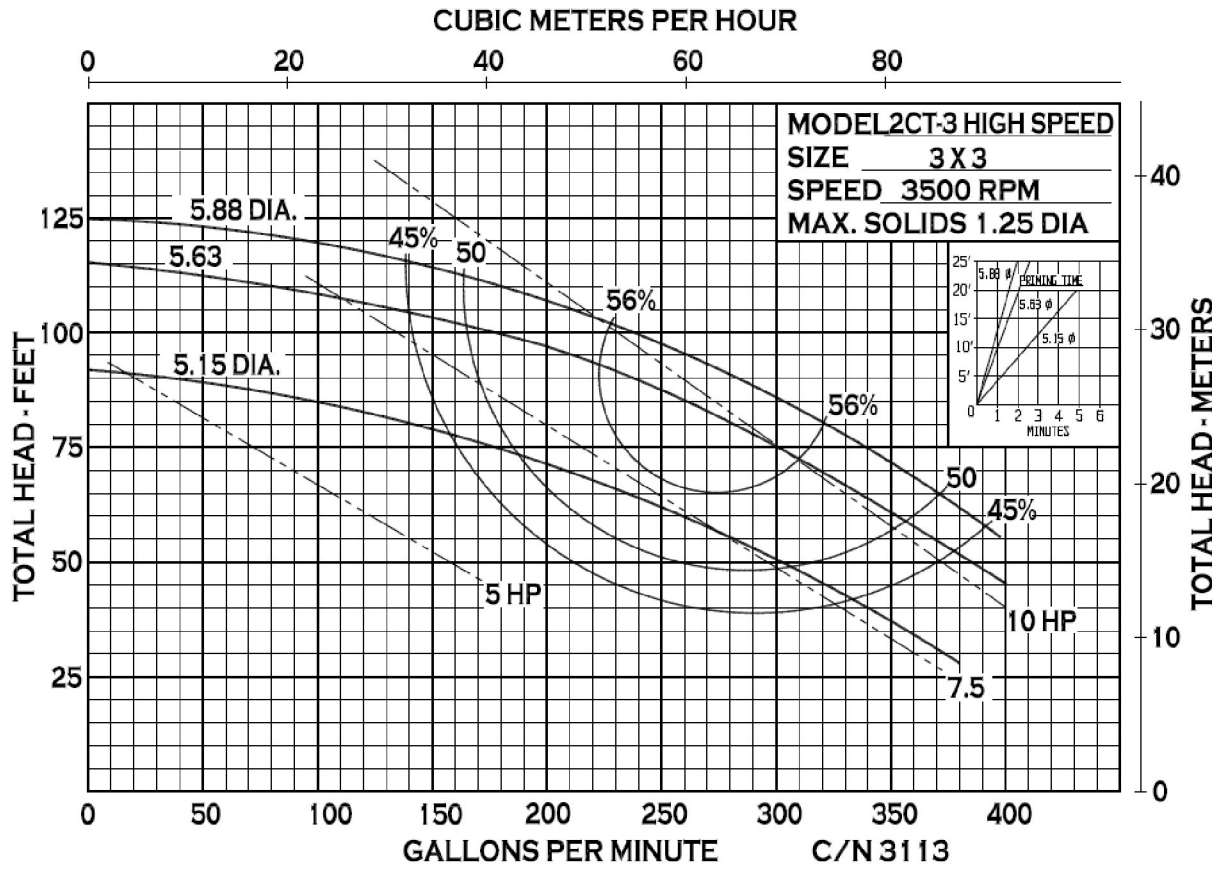


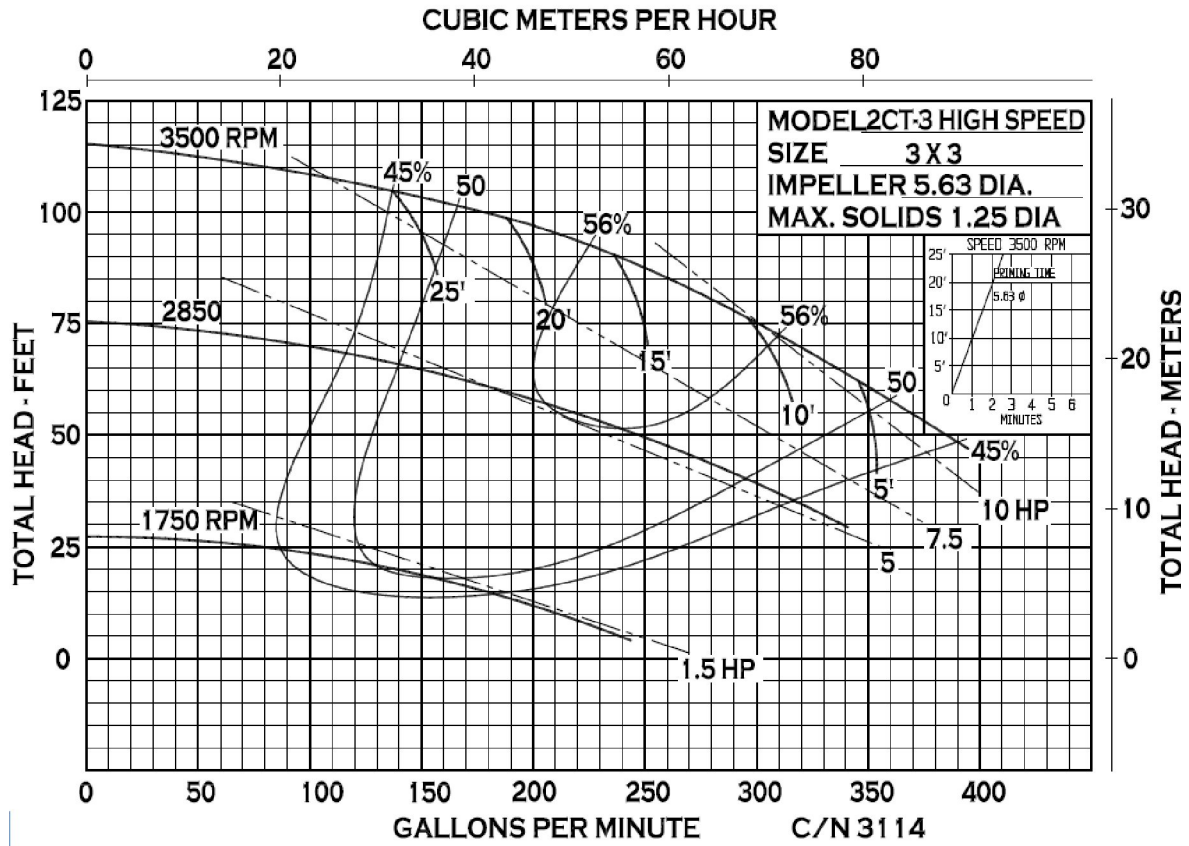
2CT-3



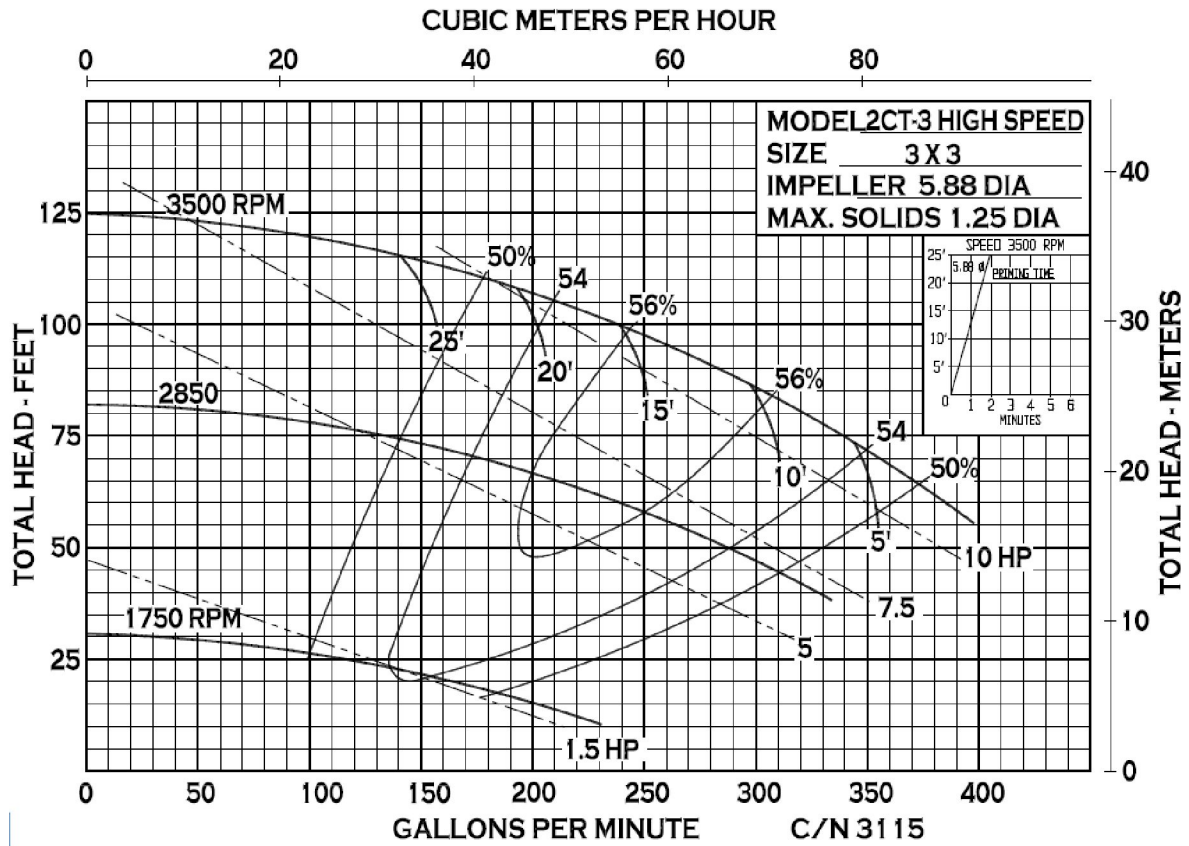
34800 BENNETT • FRASER, MI 48026-1686
 (586) 293-8240 • FAX (586) 293-8469
 (800) 563-8006 • www.mppumps.com



34800 BENNETT • FRASER, MI 48026-1686
 (586) 293-8240 • FAX (586) 293-8469
 (800) 563-8006 • www.mppumps.com

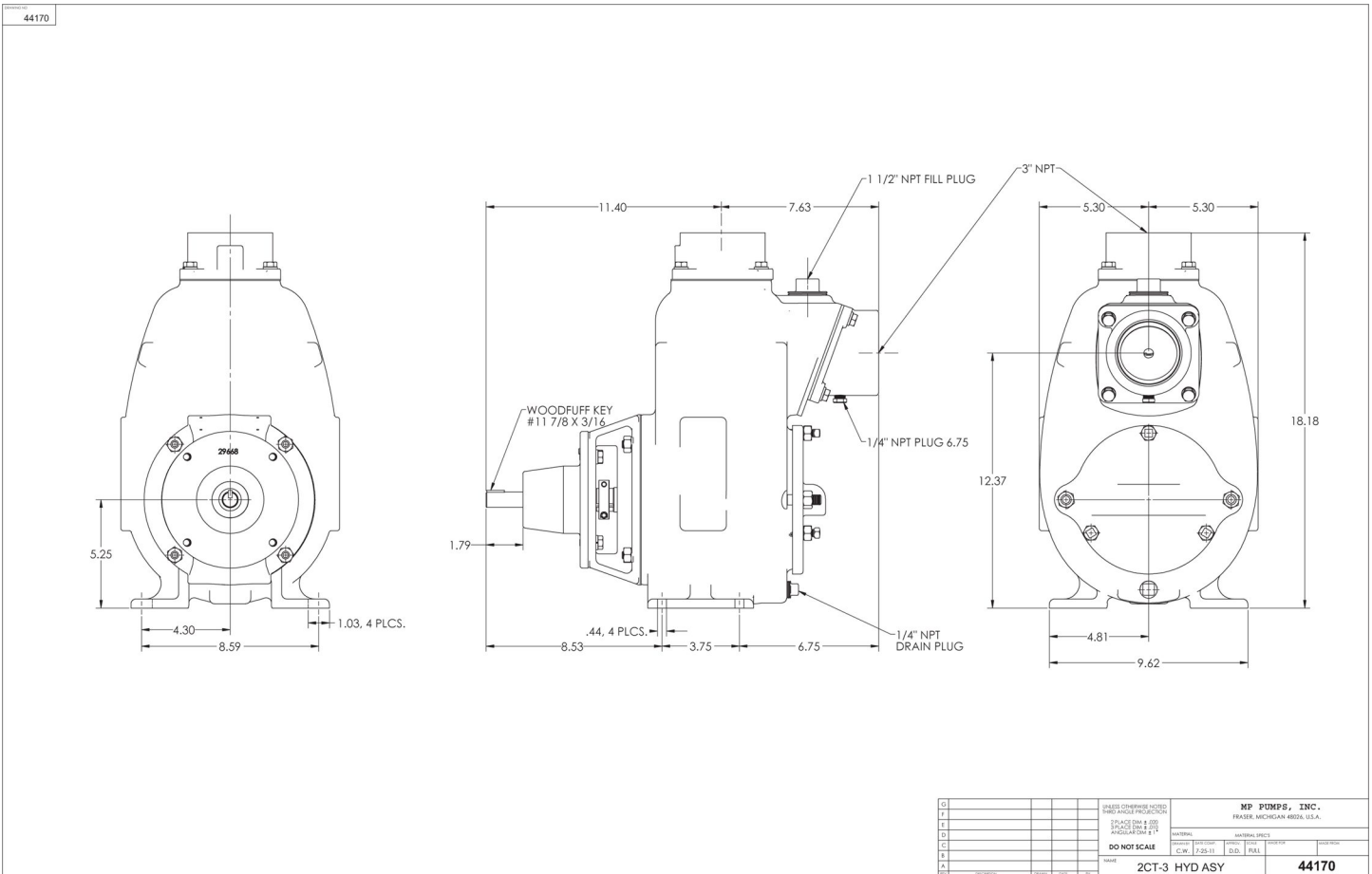
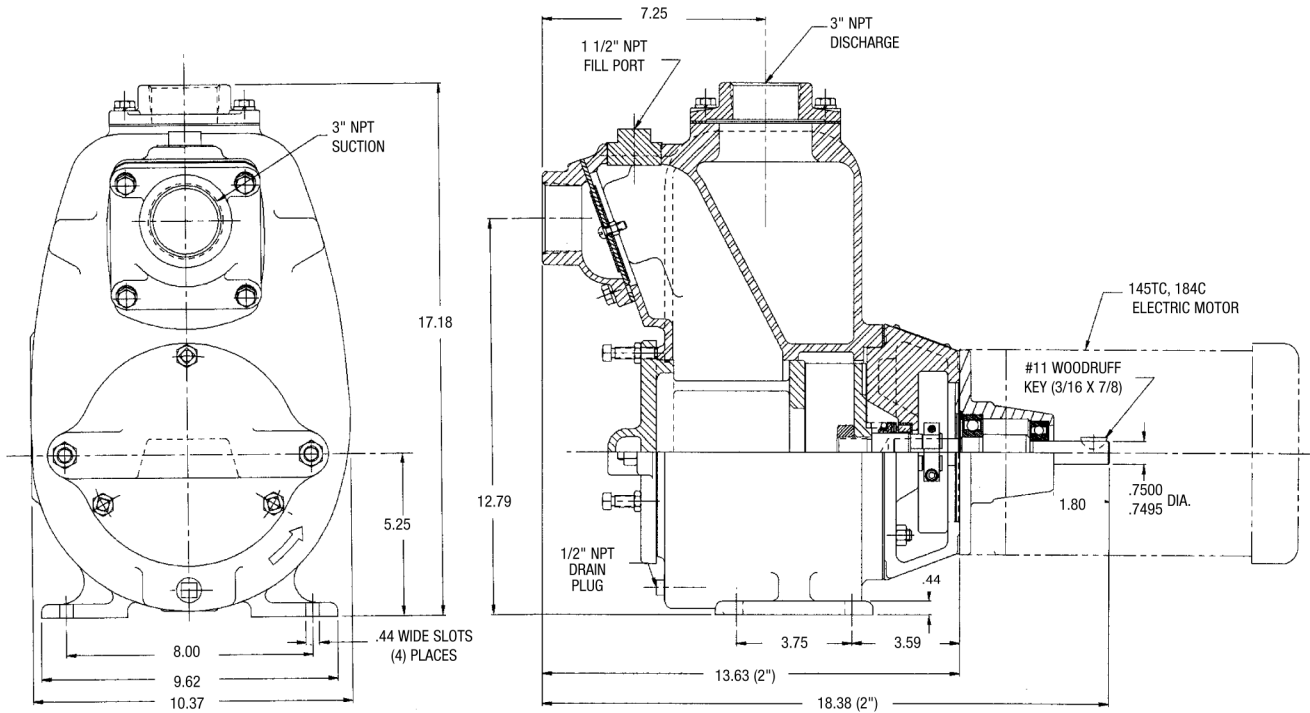


34800 BENNETT • FRASER, MI 48026-1686
 (586) 293-8240 • FAX (586) 293-8469
 (800) 563-8006 • www.mppumps.com



34800 BENNETT • FRASER, MI 48026-1686
 (586) 293-8240 • FAX (586) 293-8469
 (800) 563-8006 • www.mppumps.com

2CT-3

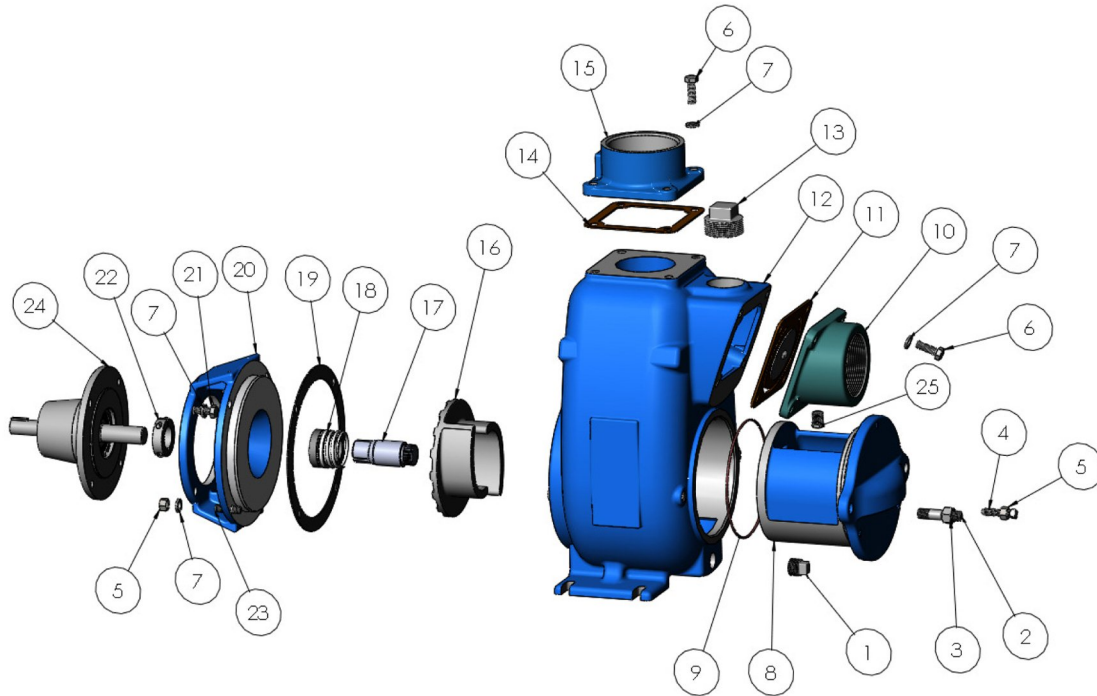


Q									
F									
D									
C									
B									
A									

FRASER CHEMISE HOUSED WARD ANGLE PROJECTION		MP PUMPS, INC. FRASER, MICHIGAN 48026, U.S.A.	
TRADE NAME & SIZE	MATERIAL	MANUAL DRESS	DATE
3" NPT SUCT & DISCH	CAST IRON		
1 1/2" NPT FILL & 1/2" DRAIN			
PROGRAM # 1			
DO NOT SCALE	CHECKED	DRAWN	DESIGNED
	J. S. S. 11		
NAME	2CT-3 HYD ASY		44170



34800 BENNETT • FRASER, MI 48026-1686
 (586) 293-8240 • FAX (586) 293-8469
 (800) 563-8006 • www.mppumps.com



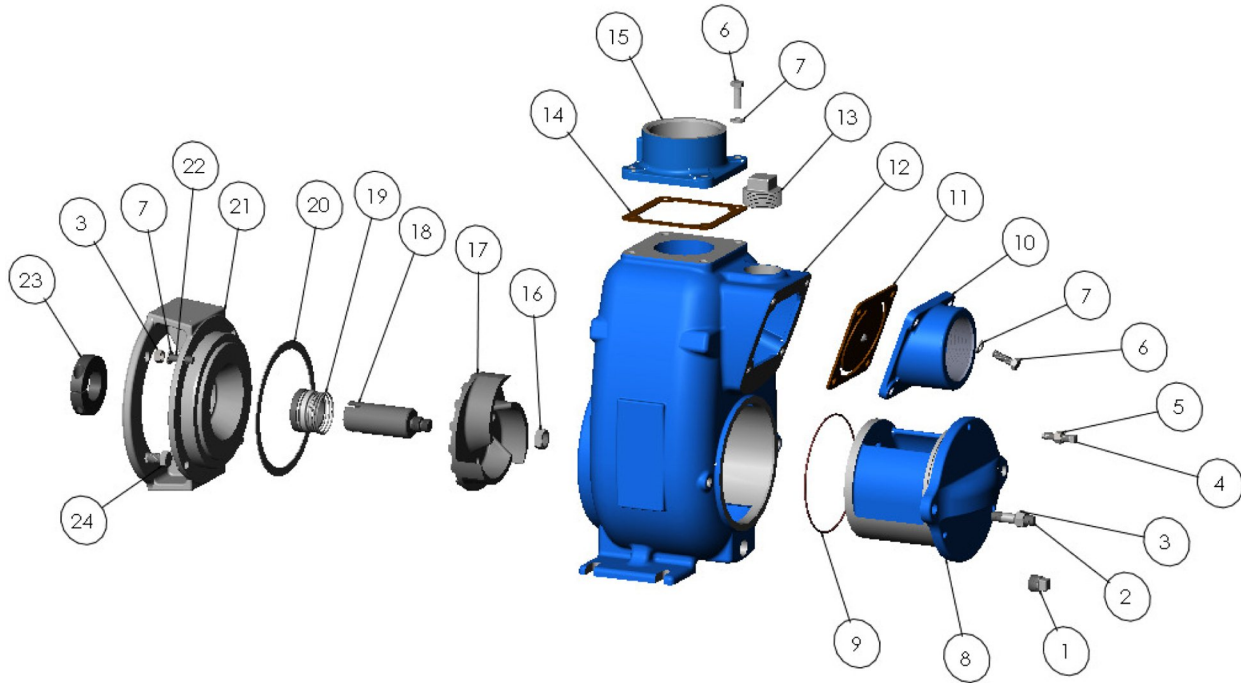
ITEM NO.	PART NO.	DESCRIPTION	QTY.		ITEM NO.	PART NO.	DESCRIPTION	QTY.
1	41479	PIPE PLUG- 1/2 NPT	1	*	14	22358	GASKET- BUNA	1
2	41449	STUD STL- 1/2-13 X 2.25	2		15	22471	FLANGE- DISCHARGE 3" NPT	1
3	41553	HEXNUT STL. - 1/2-13	2		16	40015	IMPELLER D - 5.82"	1
4	43926	SETSCREW STL. - 3/8--16	3		17	43907	DRIVE SLEEVE S.S. - 7/8"	1
5	21268	HEXNUT S.S. - 3/8-16	7	*	18	43906	SEAL ASY T-21- CCS/VITON	1
6	21291	CAPSCREW SS- 3/8-16 X 1.13	8	*	19	40815	GASKET - TAN FIBER	1
7	21266	LOCKWASHER SS- 3/8	16		20	43910	ADAPTOR C.I.	1
8	43905	CLEANOUT	1		21	21251	CAPSCREW S.S. - 1/2-13 X 7/8	4
* 9	41187	O-RING	1		22	43908	CLAMP- 7/8"	1
10	43934	FLANGE- SUCTION 3" NPT	1		23	21260	STUD SS- 3/8-16 X 1.32	4
* 11	23040	FLAPPER ASSEMBLY BUNA	1		24	30579	PED. ASSY. C.I.	1
12	43903	VOLUTE C.I.	1		25	41475	PIPE PLUG C.I. 1/4" NPT	1
13	41484	PIPE PLUG C.I. - 1 1/2" NPT	1					

* SUGGESTED REPLACEMENT PARTS

Order Online: www.PumpCatalog.com



34800 BENNETT • FRASER, MI 48026-1686
 (586) 293-8240 • FAX (586) 293-8469
 (800) 563-8006 • www.mppumps.com



ITEM NO.	PART NO.	DESCRIPTION	QTY.		ITEM NO.	PART NO.	DESCRIPTION	QTY.
1	41479	PIPE PLUG- 1/2 NPT	1		* 14	22358	GASKET- BUNA	1
2	41449	STUD STL- 1/2-13 X 2.25	2		15	22471	FLANGE- DISCHARGE 3" NPT	1
3	41553	HEXNUT STL. - 1/2-13	2		16	29194	JAM NUT SS - 5/8-18	1
4	43926	SETSCREW STL. - 3/8--16	3		17	44172	IMPELLER D - Ø5.88"	1
5	21268	HEXNUT S.S. - 3/8-16	7		18	31311	DRIVE SLEEVE S.S. - 1.375"	1
6	21291	CAPSCREW SS- 3/8-16 X 1.13	8		* 19	22361	SEAL ASSY T-21 - VITON	1
7	21266	LOCKWASHER SS- 3/8	8		* 20	44175	GASKET - TANFIBER	1
8	43905	CLEANOUT	1		21	44174	ADAPTER C.I.	1
* 9	41187	O-RING	1		22	21260	STUD SS- 3/8-16 X 1.32	4
10	22468	FLANGE- SUCTION 3" NPT	1		23	31312	CLAMP STL. - 1.5Ø I.D.	1
* 11	23040	FLAPPER ASSEMBLY	1		24	31235	CAPSCREW S.S. - 1/2-13 X .75	4
12	43903	VOLUTE C.I.	1					
13	41484	PIPE PLUG C.I. - 1 1/2" NPT	1					

* SUGGESTED REPLACEMENT PARTS

Order Online: www.PumpCatalog.com



34800 BENNETT • FRASER, MI 48026-1686
 (586) 293-8240 • FAX (586) 293-8469
 (800) 563-8006 • www.mppumps.com