



MARCH PUMPS

1819 PICKWICK AVE., GLENVIEW, IL 60026-1306, U.S.A

DP-6T-MD, DP-6K-MD

DESCRIPTION: Series 6 are centrifugal magnetic drive pumps, eliminating the need for a shaft seal. Pumps can be serviced with an adjustable wrench. See the parts list for a breakdown of parts.

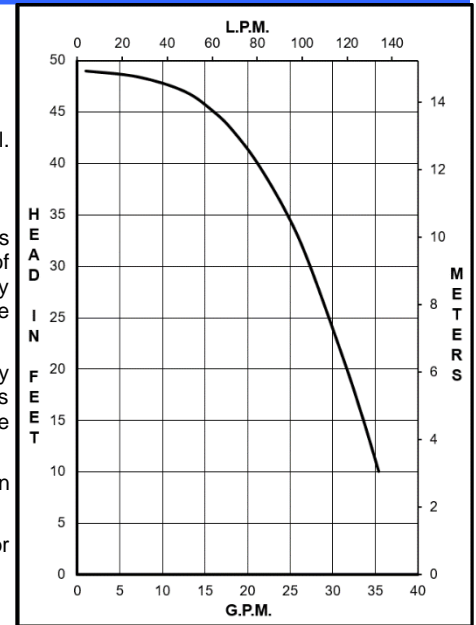
Model Abbreviations: T: Ryton & Polypropylene, K: Kynar

OPERATION: Pumps are not self-priming, lack a suction lift, and thus require a **flooded suction**. Pumps **cannot be run dry** because the impeller requires the liquid being pumped for lubrication. The direction of motor rotation should be clockwise when facing the inlet of the pump. For liquids with a specific gravity greater than water, have a higher viscosity, or for elevated temperatures, a trimmed impeller may be necessary. For application assistance, contact March Pump.

NOTE: When replacing impeller bushings in the field, the plastic bushings must be bored to size after they have been pressed into the impeller. Bore to 0.379/0.381 inches I.D. The carbon and ceramic bushings are to finished size and do not require boring after assembly. When attaching the Drive Magnet to the motor shaft, position the face of the Drive Magnet 3/32 inch below the face of the Motor Bracket.

ELECTRICAL: DP-6-MD pumps are 115/230 Volt, 60 Hz, 1 phase, (Drip Proof Motor). Have a Junction box. Motors are U.L. listed as well as rated for continuous operation.

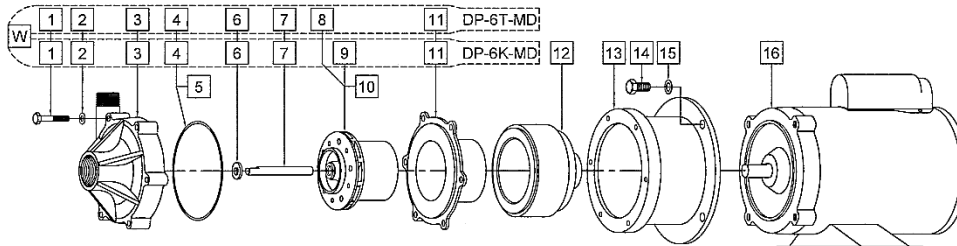
LIMITED WARRANTY: March pumps are guaranteed only against defects in workmanship or materials for a period of one year from date of manufacture pumping water.



SPECIFICATIONS	DP-6T-MD	DP-6K-MD
	Product #	0153-0002-0100
Inlet - Outlet	1" FPT - 3/4" MPT	1" FPT - 3/4" MPT
Max Internal Pressure	50 psi (344 kPa)	75 psi (517 kPa)
Max Liquid Temperature	190 °F (87 °C)	200 °F (93 °C)

MODEL	60 Hz											Height		Width		Length		Packed Weight	
	Max Flow gpm	Max Flow lpm	Max Head ft	Max Head psi	Max Head m	ELECTRICAL						Inches	cm	Inches	cm	Inches	cm	lbs	kg
						Ph	V	A	Hp	kW	Rpm								
DP-6T-MD	38	144	49	21.2	14.9	1	115	7.4	1/2	0.373	3450	7.79	19.7	6.54	16.6	15.14	38.4	24.75	11.22
						230	3.7												
DP-6K-MD	38	144	49	21.2	14.9	1	115	7.4	1/2	0.373	3450	7.79	19.7	6.54	16.6	15.14	38.4	24.50	11.11
						230	3.7												

All specifications & data are based on pumping water & are intended as a guideline only. Specifications may vary with different motors.



#	DESCRIPTION	DP-6T-MD	DP-6K-MD	SIZE (Inches)	QTY.	DP-6T-MD	DP-6K-MD
1	Screw		Stainless	1/4-20 x 1-3/4 Lg.	6	0153-0064-1000	
2	Washer		Stainless	1/4 ID x 1/2 OD	6	0155-0021-1000	
3	Front Housing w/Inlet & Outlet	Ryton	Kynar		1	0153-0002-1000	0153-0042-1000
4	"O" Ring		Viton	3/32 CS x 4-7/16 OD	1	0153-0015-1000	
5	"O" Ring		Viton/Teflon (Option)	3/32 CS x 4-7/16 OD	1	0153-0024-1000	
6	Thrust Washer		Ceramic		1	0155-0009-1000	
7	Shaft		Ceramic		1	0153-0007-1000	
8	Impeller w/Ryton/Teflon/Carbon Bushing	Polypropylene	Kynar (Option)		1	0153-0003-0400	0153-0043-0400
9	Impeller w/Carbon Bushing	Polypropylene (Option)	Kynar		1	0153-0003-0500	0153-0043-0500
10	Impeller w/Mica Teflon Bushing	Polypropylene (Option)	Kynar (Option)		1	0153-0003-0900	0153-0043-0900
11	Rear Housing w/Ceramic Thrust Washer	Ryton	Kynar		1	0153-0005-0100	0153-0041-0100
12	Drive Magnet				1	0153-0035-0100	
13	Motor Bracket		Aluminum		1	0153-0093-0010	
14	Screw		Stainless	3/8-16 x 3/4 Lg.	4	0155-0017-1000	
15	Washer		Stainless	3/8 ID x 5/8 OD	4	0155-0019-1000	
16	Motor, Drip Proof		115/230 V, 60 Hz, 1 Phase		1	0153-0027-1000	
W	Wet End Kit				1	0153-0056-0100	0153-0057-0100

Materials in Contact with Solution:

DP-6K-MD: Kynar/Carbon Filled, Viton, Ceramic, Carbon

DP-6T-MD: Polypropylene, Ryton, Viton, Ceramic, Ryton/Teflon/Carbon

NOTE: Contact Factory for other materials/parts not listed. Explosion proof & special voltage motors are available upon special order. 0153-0018-1100 R1