

GEAR PUMPS

GEAR PUMPS SERIES 121

PERFORMANCE



FEATURES

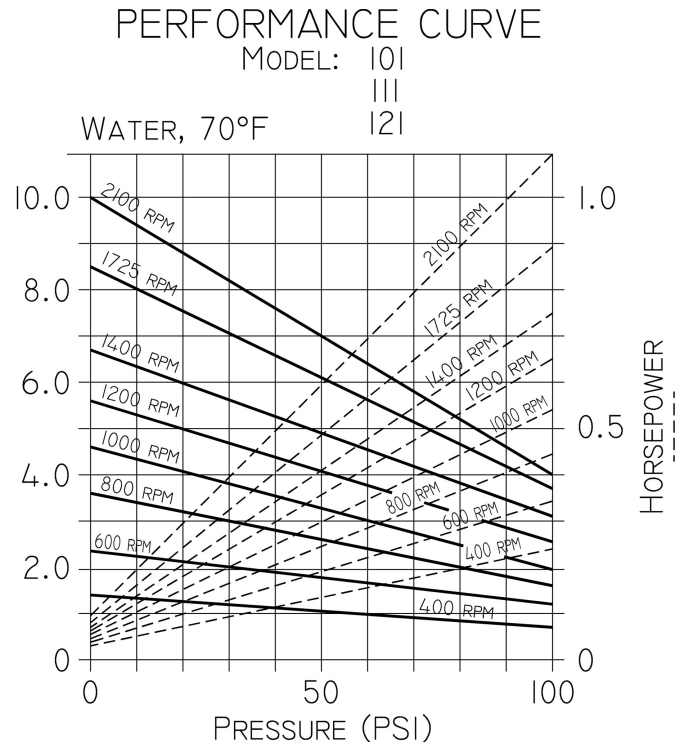
- Pipe Size $\frac{3}{4}$ "
- All Bronze or Corrosion Resistant Aluminum Construction
- Heavy Duty Ball Bearings
- Designed for Pulley Drive Applications
- Quiet Running
- Can Handle Contaminated Liquids
- Carbon Face Mechanical Seal
- Nitrile Stator and Stainless Steel Rotor

DRIVE

This pump has a bare shaft and is designed for pulley drive applications or direct coupled to an electric motor. Viscous or thick liquids must be pumped at slower speeds as indicated in the specifications table. Speed reduction from standard electric motor speed can be obtained by pulleys in the direct ratio of speed reduction desired - large pulley on pump, small pulley on motor. Heavy liquids can be pumped at higher speeds, but require more horsepower in direct amount to their specific gravity. For example, a liquid with a specific gravity of 1.3 would require 1.3 times the original horsepower.

LIQUIDS AND TEMPERATURE

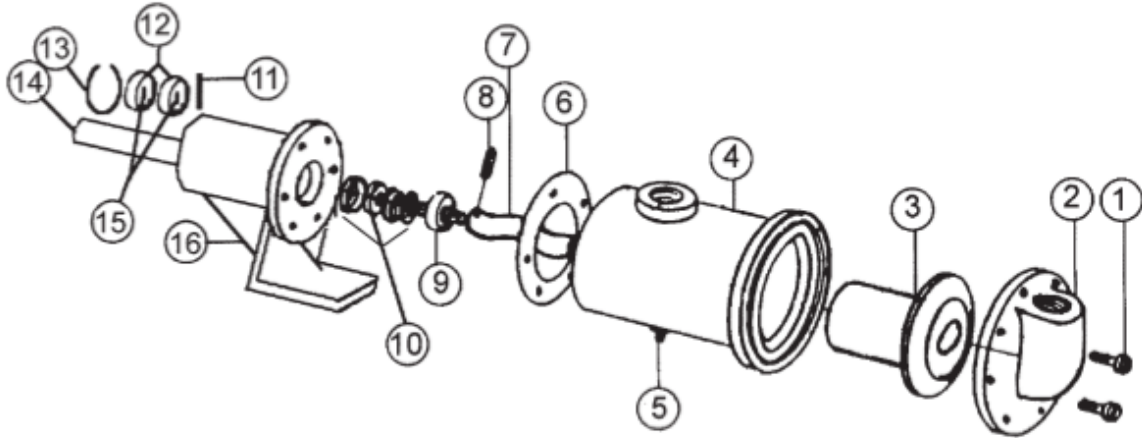
The corrosion resistant alloys used are compatible with common liquids including water, water solutions, oils and many commercial chemicals. Severe solvents are not compatible with the Nitrile and should not be pumped. Viscous liquids can be pumped, but at slower speeds. Samples of liquids, viscosity and recommended pump shaft R.P.M. are given on this page. Contaminated liquids can be pumped because of the flexible Nitrile stator.



SUCTION LIFT

Close fit of the rotor within the stator permits lifting of liquid on the suction side as high as 20 ft. high starting torque motors are recommended in order to overcome the high starting friction of the stator.

EXPLODED VIEW AND PARTS LIST



Pump No.	1	2	3*	4	5	6*	7*	8*
	Screw	Cover	Stator	Body	Plug	Gasket	Rotor	Pin
	14 Reqd	1 Reqd	1 Reqd	1 Reqd	1 Reqd	1 Reqd	1 Reqd	1 Reqd
121	5897	5872	5891	5873	5908	5882	5890	5888
121B	5897	6896	5891	6897	5395	5882	5890	5888

10*	11	12	13	14	15	16
Seal Assembly	Pin	Ball Bearing	Snap Ring	Shaft	Snap Ring	Pedestal
1 Reqd	1 Reqd	2 Reqd	1 Reqd	1 Reqd	1 Reqd	1 Reqd
32156	5889	5928	5925	5927	5926	5924
32156	5889	5928	5925	5927	5926	6895

* Repair Kit #10737. Kit includes these parts. (and others for 101/101B) as well as compression plate tool for seal removal.

9

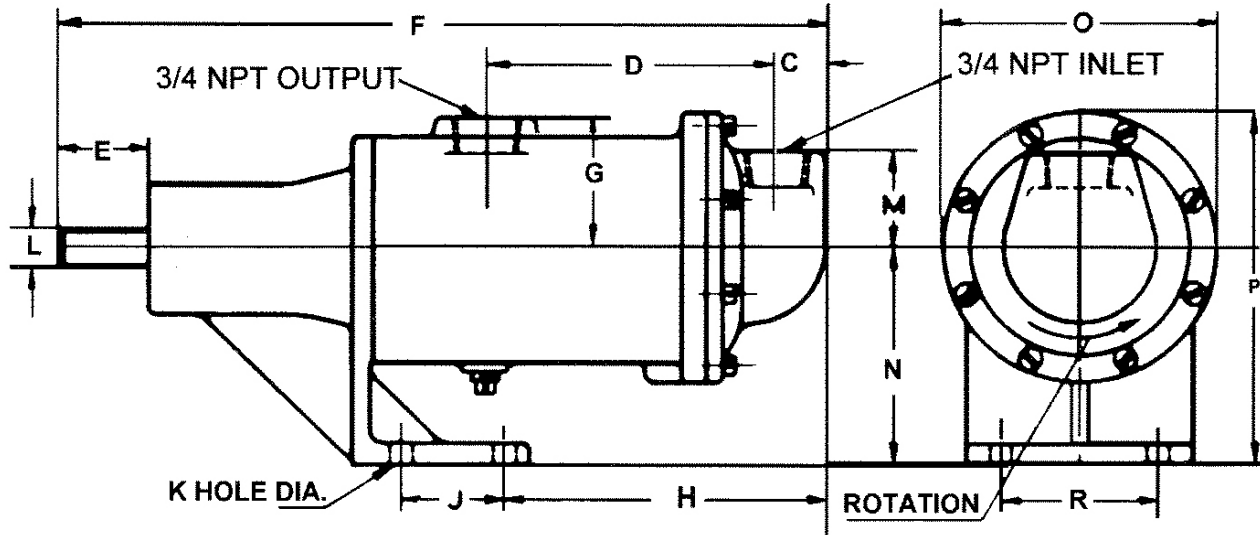
**Universal
Joint**

1 Reqd

5874

5874

DIMENSIONS



ROTATION

This helical rotor design demands a single rotation - clockwise when facing the pump drive shaft. Pump rotation and "in" and "out" ports are indicated on the dimension diagrams.