

SEALMASTER™



SEALMASTER™ ER STYLE BALL BEARINGS



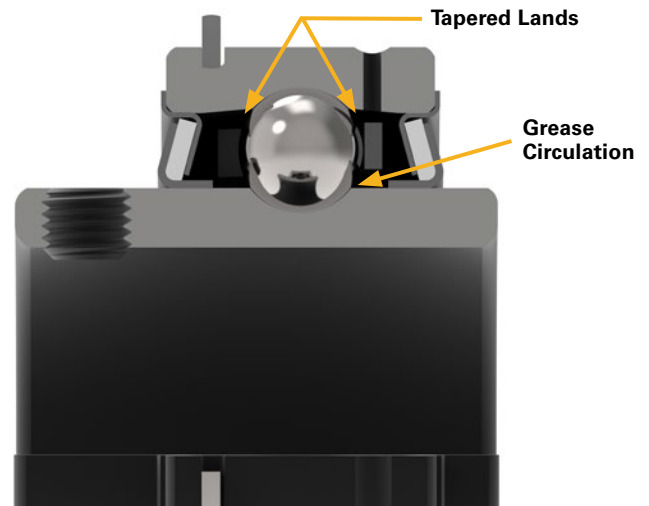
RegalRexnord™

SEALMASTER™ ER BALL BEARINGS HAVE MANY OF THE SAME FEATURES AS OUR GOLD LINE MOUNTED UNITS

NEW PPS RETAINER MATERIAL (POLY PHENYLENE SULFIDE)

Mounted ball bearing retainer building on 20 years of McGill™ aerospace bearing testing and performance.

- Initially developed for demanding aerospace applications
- Patent pending design with grease reservoirs and channels
 - Improves grease (oil) distribution to the ball elements and bearing raceways and improves lubrication re-circulation
- Inner land riding design
 - Commonly used for precision machine tools and high speed spindle bearings



EXTRA WIDE OUTER RING

Maintains fit up with roll or housing and provides a large grease cavity.

PATENTED TAPERED LANDS TECHNOLOGY

The outer land surface in a conventional bearing is parallel to the axis of the inner ring. Our patented "Tapered Lands" surface is tapered in a radial direction toward the bearing race. This subtle yet crucial design change ensures lubrication will easily redirect back to the raceway. Improved bearing lubrication circulation leads to significantly longer bearing service life – without reductions in bearing radial or thrust capacities.

EXTRA WIDE INNER RING

Provides better stability on the shaft.

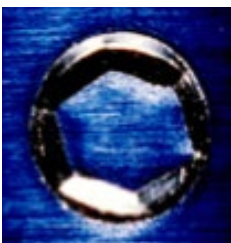
ZONE HARDENED INNER RACE

Provides a fully hardened ball path while leaving the race extension unhardened, allowing for exceptional control of set screw fit and hold. Raceways are ground and honed to ensure longer life and quicker operation.

DIAMOND-FACETED SET SCREWS

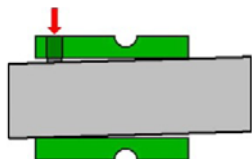


Diamond Faceted

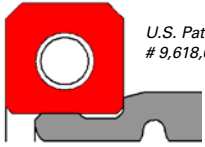


Bite Mark

- Class 3A precision threads
- Ross shaft material into tip
- Large, flat edge surfaces to resist back-out
- Large contact areas decrease stress
- Less fretting and tip damage due to race and shaft misalignment



SKWEZLOC™ DESIGN



U.S. Patent
9,618,042 B2



ER Exploded View

BENEFITS:

- Improved shaft lock reliability
- Can be used on commercial shafting
 - Saves customer \$ on shafting
- Same easy installation method as existing design

FEATURES:

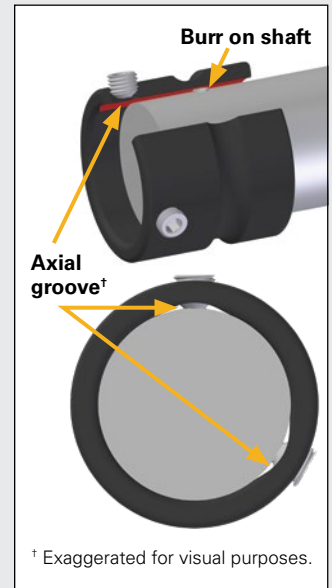
- Groove in bore
- Optimized tang profile
- Larger collar and cap screw
- Torx®* plus cap screw

Shaft Diameter	OLD Tolerance Range Turned, Ground & Polished (TG&P)	NEW Tolerance Range Commercial Shafting/ Turned and Polished (T&P)
1/2" to 2"	+0.000 / -0.005"	+0.000 / -0.003"
2 1/8" to 2 7/16"	+0.000 / -0.010"	+0.000 / -0.004"

TIME SAVING™ AXIAL GROOVE

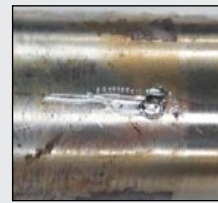
FEATURES:

- Normal Set Screw Locking Design:
 - Burr created in shaft by set screws
 - Difficult to remove bearing due to burr catching against inner ring
- Axial groove in bore at set screw locations

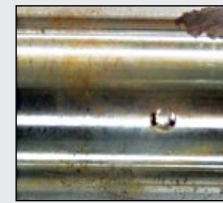


† Exaggerated for visual purposes.

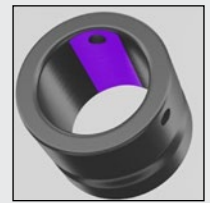
ONLY AVAILABLE ON SIZES ABOVE 2 7/16" BORE.



Example of Removal with Standard Groove Bearing



Example of Removal with Axial Groove Bearing



Precision Machined

SEAL OPTIONS

Standard Felt Seal

- Felt washer
- Low drag
- Protection against dry, gritty contamination
- Nomex felt material for high temperature



Contact Seal

- Single nitrile washer
- Balance between drag and protection
- Silicone fiberglass washer for high temperature



CSpring Loaded Lip Seal

- Nitrile and FKM options
- Heavy lip & stainless steel spring
- Excellent performance in wet environments



Backed Off / Low Drag Seal

- Felt washer, smaller size
- Lower drag
- Web processing design



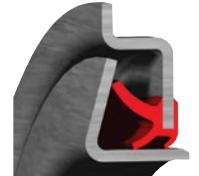
Double Lip Contact Seal

- Dual nitrile washers
- Solid protection in wet environments
- Silicone fiberglass washers for high temperatures



High Performance Seal

- FKM rubber lips
- Multi-lip seal with stainless steel flinger
- Performance in wet & gritty environments



Labyrinth Seal

- Grease or air gap
- Extreme low drag
- Web processing design



Triple Lip Contact Seal

- Triple nitrile washers
- Performance in wet & gritty environments

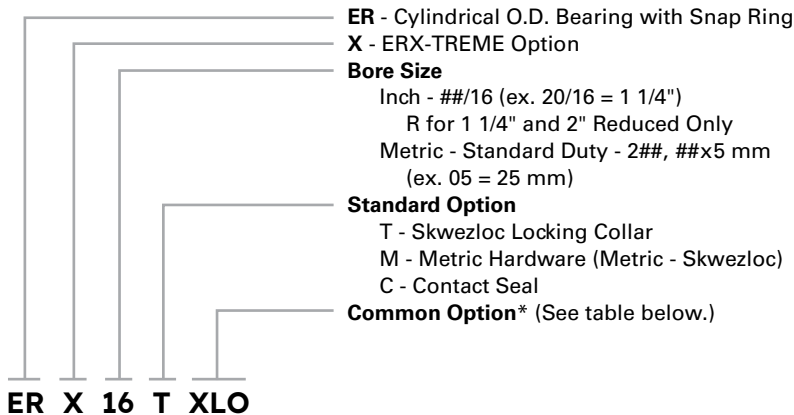


* Torx is believed to be the trademark and/or trade name of Acument Intellectual Properties, LLC, and is not owned or controlled by Regal Rexnord Corporation or its affiliates.

SEALMASTER™ ER BALL BEARING FEATURES AND BENEFITS

- Wider outer and inner ring width increases grease capacity and bearing life
- Zone hardened inner raceway without heat treat on extended portion allows tapped thread for set screw to maintain accuracy
- Patented outer ring lands to allow oil to drip back on to raceway for continuous lubrication increasing bearing life
- Patented next generation Skwezloc™ with circumferential groove allowing greater holding force to the shaft
- Patent-pending “Time Axial Groove” on large size bore to help facilitate easy bearing removal during shaft disassembly
- Black oxide treated components
- Diamond faceted set screw lock at 120° location for balanced holding power
- Standard felt seal with multiple options including “free-spinning” (oil lubricated) bearing
- Standard modified units with re-lube access through the inner ring.

ER STYLE NOMENCLATURE



* Common Option

3C	Triple Lip Contact Seal - replaced by DRT in most sizes
DRT	High Contamination
HI	ERX-Treme High Temperature Krytox®* Grease
HIY	ERX-Treme High Temperature Krytox Grease Expansion
LO	ERX-Treme Low Drag
X	Labyrinth Seal
XLO	ERX-Treme Extra Low Drag

* Krytox is believed to be the trademark and/or trade name of The Chemours Company FC, LLC, and is not owned or controlled by Regal Rexnord Corporation or its affiliates.

SEALMASTER™

Regal Rexnord

Customer Service: 800-626-2120

Technical Service: 800-626-2093

CustomerService.PTSolutions@regalrexnord.com

regalrexnord.com

The proper selection and application of products and components, including assuring that the product is safe for its intended use, are the responsibility of the customer. To view our Application Considerations, please visit <https://www.regalrexnord.com/Application-Considerations>.

To view our Standard Terms and Conditions of Sale, please visit <https://www.regalrexnord.com/Terms-and-Conditions-of-Sale> (which may redirect to other website locations based on product family).

"Regal Rexnord" is not indicative of legal entity. Refer to product purchase documentation for the applicable legal entity. Regal Rexnord, Sealmaster, McGill, Time Saving and Skwezloc are trademarks of Regal Rexnord Corporation or one of its affiliated companies.

© 2024 Regal Rexnord Corporation, All Rights Reserved. MCB24009E • Form# 10708E

RegalRexnord™