

# **BALDOR**® • ***RELIANCE***

## **Product Information Packet**

# **EL1410T**

**5HP,1735RPM,1PH,60HZ,184T,3646LC,OPSB,F1**

Part Detail							
Revision:	AM	Status:	PRD/A	Change #:		Proprietary:	No
Type:	AC	Prod. Type:	3646LC	Elec. Spec:	36WGY585	CD Diagram:	CD0017A02
Enclosure:	OPSB	Mfg Plant:		Mech. Spec:	36H982	Layout:	36LYH982
Frame:	184T	Mounting:	F1	Poles:	04	Created Date:	
Base:	RG	Rotation:	R	Insulation:	F	Eff. Date:	09-10-2015
Leads:	2#10 A PH,2#16 B PH					Replaced By:	
Literature:		Elec. Diagram:					

<b>Nameplate NP2116L</b>	
<b>CAT.NO.</b>	EL1410T
<b>SPEC.</b>	36H982Y585G1
<b>HP</b>	5
<b>VOLTS</b>	230
<b>AMP</b>	19.1
<b>RPM</b>	1735
<b>FRAME</b>	184T
<b>HZ</b>	60
<b>PH</b>	1
<b>SER.F.</b>	1.15
<b>CODE</b>	G
<b>DES</b>	L
<b>CL</b>	F
<b>NEMA-NOM-EFF</b>	86.5
<b>PF</b>	97
<b>RATING</b>	40C AMB-CONT
<b>CC</b>	USABLE AT 208V
<b>DE</b>	6206
<b>ODE</b>	6205
<b>ENCL</b>	OPSB
<b>SN</b>	

Parts List		
Part Number	Description	Quantity
SA037037	SA 36H982Y585G1	1.000 EA
RA033062	RA 36H982Y585G1	1.000 EA
HA6362ZP	LIFTING LUG FOR 36 FRAME MOTORS.	2.000 EA
36CB3004	36 CB CASTING W/1.09 DIA LEAD HOLE @ 6:0	1.000 EA
36GS1000SP	GASKET-CONDUIT BOX, .06 THICK #SV-330 LE	1.000 EA
51XB1016A08	10-16X 1/2HXWSSLD SERTYB	2.000 EA
11XW1032G06	10-32 X .38, TAPTITE II, HEX WSHR SLTD U	1.000 EA
HW3001B01	BRASS CUP WASHER, FOR #8 SCREW	1.000 EA
36EP3200A01	FR ENDPLATE, ASSEMBLY FOR ROUTING	1.000 EA
HW4500A01	1641B(ALEMITE)400 UNIV, GREASE FITT	1.000 EA
SP1008A01	BAFFLE, MODEL 36 & 37	1.000 EA
13XF0832A08	8-32 X.50 PAN HD,SLTD, TYPE F SCREW, ZIN	2.000 EA
10XN2520A12	O1/4-20X 3/4 HEX HEAD CAP	2.000 EA
HW5100A05	WVY WSHR F/205 & 304 BRGS	1.000 EA
36EP3100A01SP	PUEP ASSEMBLY FOR ROUTING PURPOSES	1.000 EA
HW4500A01	1641B(ALEMITE)400 UNIV, GREASE FITT	1.000 EA
HA3101A61	THRUBOLT- 1/4-20 X 14.187	4.000 EA
XY2520A12	1/4-20 HEX NUT, DIRECTIONAL SERRATIONS	4.000 EA
36CB4516	36 LIPPED CB LID	1.000 EA
37GS1001SP	GASKET, CONDUIT BOX LID, .06 THICK LEXID	1.000 EA
51XW0832A07	8-32 X .44, TAPTITE II, HEX WSHR SLTD SE	4.000 EA
HW2501E16	3KEY, 1/4 SQ X 1.750	1.000 EA
HA7000A02	KEY RETAINER RING, 1 1/8 DIA, 1 3/8 DIA	1.000 EA
85XU0407S04	4X1/4 U DRIVE PIN STAINLESS	2.000 EA

<b>Parts List (continued)</b>		
<b>Part Number</b>	<b>Description</b>	<b>Quantity</b>
MJ1000A02	GREASE, POLYREX EM EXXON (USe 4824-15A)	0.050 LB
LB1115N	LABEL,LIFTING DEVICE (ON ROLLS)	1.000 EA
SP5172A05	37 TYPE LC TORQ STAT SW LEAD ASSEMBLY	1.000 EA
36CB5005A01	CAPACITOR BOX KIT, 36CB3800, OC3060F10,	1.000 EA
LB1119N	WARNING LABEL	1.000 EA
LC0017	CONN LABEL-1 PHASE-SINGLE VOLT-REV ROTNO	1.000 EA
MG1000Y03	MUNSELL 2.53Y 6.70/ 4.60, GLOSS 20,	0.022 GA
NP2116L	ALUM SUPER-E UL CSA CC	1.000 EA
36PA1001	PKG GRP, PRINT PK1017A06	1.000 EA
MN416A01	TAG-INSTAL-MAINT no wire (1000/bx) 11/14	1.000 EA

<b>Accessories</b>		
<b>Part Number</b>	<b>Description</b>	<b>Multiplier</b>
36-3403	C FACE KIT	A8
36EP1405A09SP	D-FLANGE KIT	A8

**AC Induction Motor Performance Data**

Record # 11418 - Typical performance - not guaranteed values

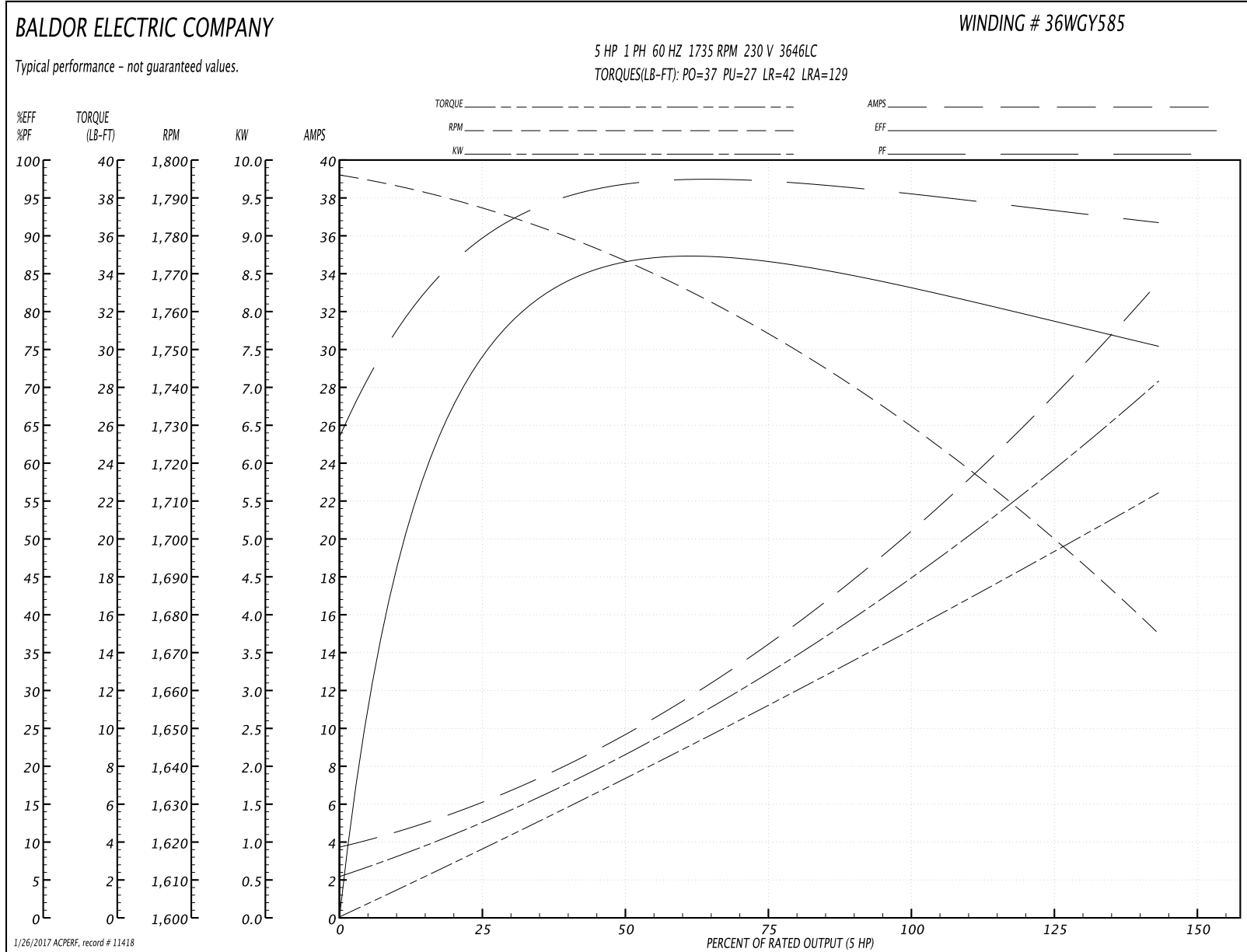
<b>Winding:</b> 36WGY585-R001	<b>Type:</b> 3646LC	<b>Enclosure:</b> OPEN
-------------------------------	---------------------	------------------------

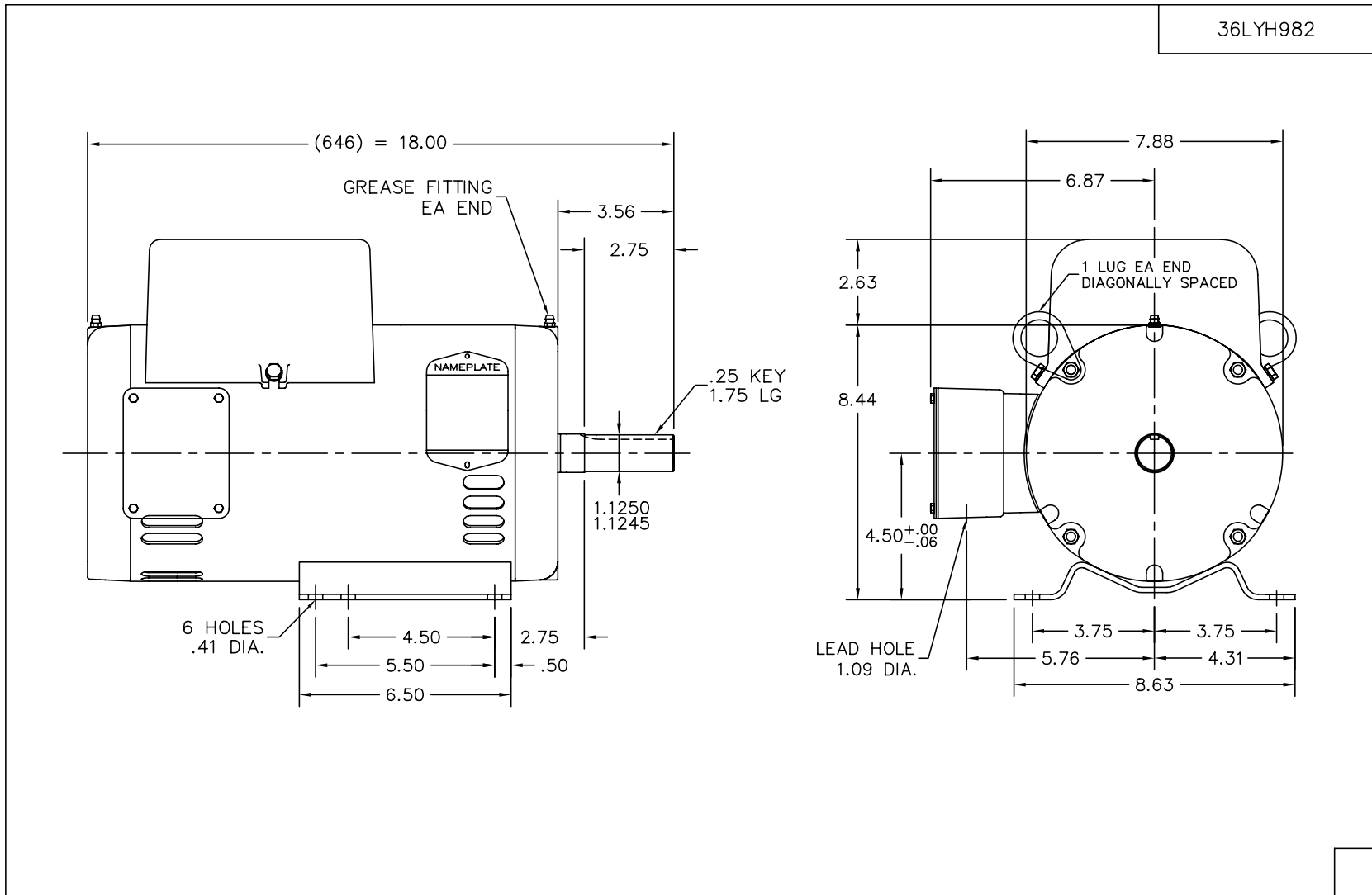
Nameplate Data				230 V, 60 Hz: Single Voltage Motor	
Rated Output (HP)	5			Full Load Torque	15 LB-FT
Volts	230			Start Configuration	direct on line
Full Load Amps	19.1			Breakdown Torque	37 LB-FT
R.P.M.	1735			Pull-up Torque	27 LB-FT
Hz	60	Phase	1	Locked-rotor Torque	42 LB-FT
NEMA Design Code	L	KVA Code	G	Starting Current	129 A
Service Factor (S.F.)	1.15			No-load Current	3.4 A
NEMA Nom. Eff.	86.5	Power Factor	97	Line-line Res. @ 25°C	0.42 Ω A Ph 0.89 Ω B Ph
Rating - Duty	40C AMB-CONT			Temp. Rise @ Rated Load	72°C
S.F. Amps				Temp. Rise @ S.F. Load	110°C

Load Characteristics 230 V, 60 Hz, 5 HP

% of Rated Load	25	50	75	100	125	150	S.F.
Power Factor	89	95	96	96	96	95	96
Efficiency	69.9	83	86.6	86	79.8	74.6	82.3
Speed	1784	1770	1754	1735	1706	1672	1718
Line amperes	6.4	10.3	14.5	19.6	26.3	34	23.62

Performance Graph at 230V, 60Hz, 5.0HP Typical performance - Not guaranteed values



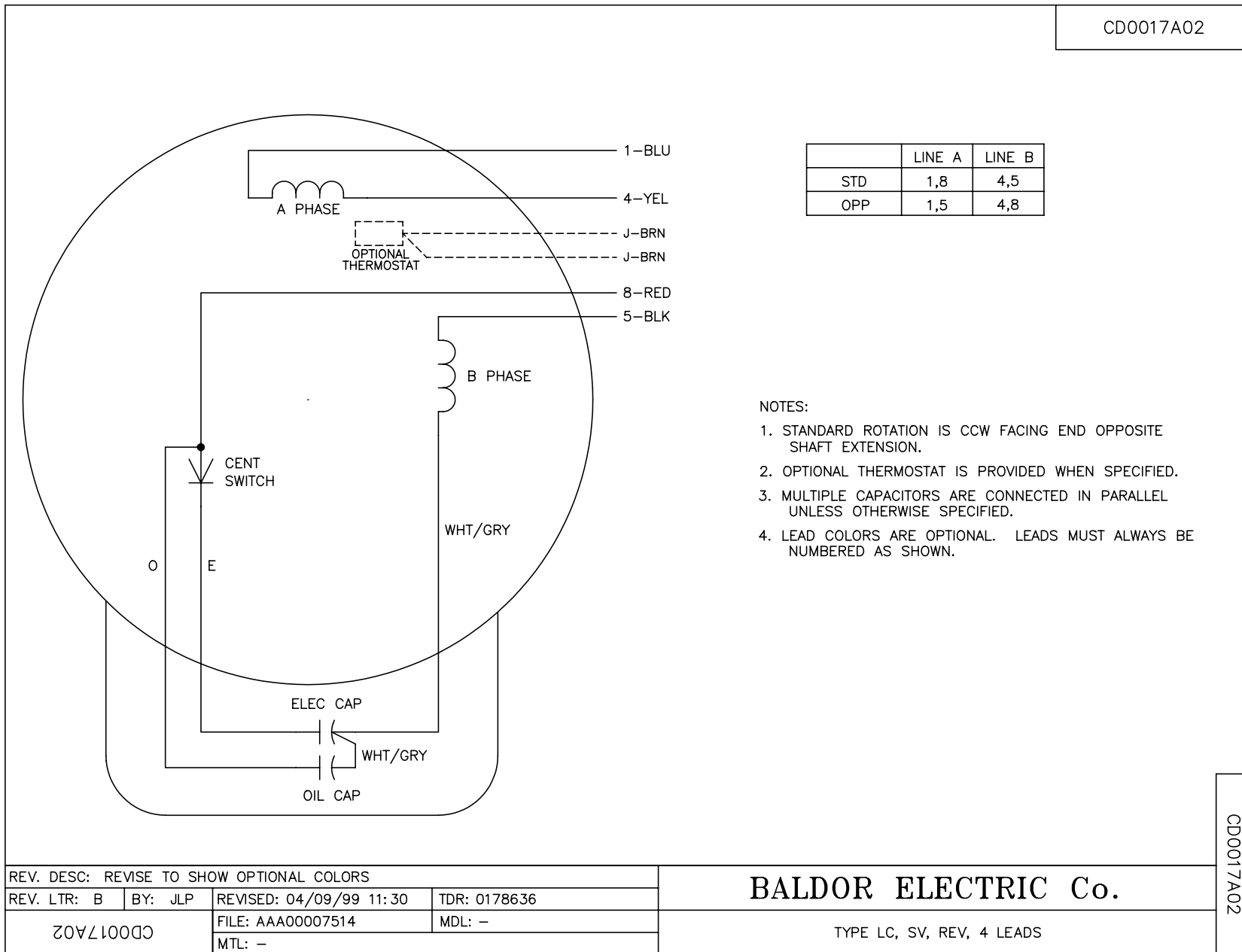


36LYH982

CUST. NAME		CUST. P.O.		CERTIFIED BY		MODEL		INSUL		AMB							
H.P.		MTG		TYPE		R.P.M.		VOLTS		ENCL							
PHASE		FREQ		FRAME		<b>BALDOR ELECTRIC Co.</b>  HORZ 182-4T OPSB 36LC (646 ONLY)											
REV. DESC: CHG'D CONDUIT BOX (SEE EC09)																	
REV. LTR: A		BY: JED		REVISED: 01/28/99 10:07								TDR: 0171563					
286HΛ79Σ				FILE: AAA00053016								MDL: -					
MTL: -																	

36LYH982

CD0017A02



CD0017A02

REV. DESC: REVISE TO SHOW OPTIONAL COLORS			
REV. LTR: B	BY: JLP	REVISED: 04/09/99 11:30	TDR: 0178636
CD0017A02		FILE: AAA00007514	MDL: -
		MTL: -	

**BALDOR ELECTRIC Co.**

TYPE LC, SV, REV, 4 LEADS