

# **BALDOR**® • **RELIANCE**

## **Product Information Packet**

# **EM31159**

**1.5HP, 1160RPM, 3PH, 60HZ, 56H, 3540M, ODP, F1**

Part Detail							
Revision:	F	Status:	PRD/A	Change #:		Proprietary:	No
Type:	AC	Prod. Type:	3540M	Elec. Spec:	35WGP254	CD Diagram:	CD0005
Enclosure:	ODP	Mfg Plant:		Mech. Spec:	35J382	Layout:	35LYJ382
Frame:	56H	Mounting:	F1	Poles:	06	Created Date:	02-27-2014
Base:	RG	Rotation:	R	Insulation:	F	Eff. Date:	12-07-2016
Leads:	9#18					Replaced By:	
Literature:		Elec. Diagram:					

Nameplate NP3155L											
CAT.NO.	EM31159										
SPEC.	35J382P254G1										
HP	1.5										
VOLTS	230/460										
AMP	5.2/2.6										
RPM	1160										
FRAME	56H				HZ	60			PH	3	
SER.F.	1.15			CODE	L		DES	B		CL	F
F.L. AVG. EFF.	84			PF	65						
RATING	40C AMB-CONT										
CC									USABLE AT 208V	5.6	
DE	6205				ODE	6203					
ENCL	ODP			SN							

Parts List		
Part Number	Description	Quantity
SA277271	SA 35J382P254G1	1.000 EA
RA263823	RA 35J382P254G1	1.000 EA
NS2512A01	INSULATOR, CONDUIT BOX X	1.000 EA
35CB3007	35 CB CASTING W/.88 DIA. LEAD HOLE	1.000 EA
51XB1016A06	10-16X3/8 HXWSSLD SERTYB	2.000 EA
11XW1032G06	10-32 X .38, TAPTITE II, HEX WSHR SLTD U	1.000 EA
35EP3201A03	STD FR EP OPEN-203BRG-35L OR M FRAME--LE	1.000 EA
HW5100A03SP	WAVY WASHER (W1543-017)	1.000 EA
35EP3200A02	PUEP OPEN 205 BRG	1.000 EA
XY1032A02	10-32 HEX NUT DIRECTIONAL SERRATION	4.000 EA
35CB4521	35 LIPPED CB LID (GALV & PHOSPH)	1.000 EA
51XW0832A07	8-32 X .44, TAPTITE II, HEX WSHR SLTD SE	4.000 EA
HW2501D13	KEY, 3/16 SQ X 1.375	1.000 EA
HA7000A04	KEY RETAINER 0.625 DIA SHAFTS	1.000 EA
85XU0407S04	4X1/4 U DRIVE PIN STAINLESS	2.000 EA
MJ1000A02	GREASE, POLYREX EM EXXON (USe 4824-15A)	0.050 LB
MG1000Y03	MUNSELL 2.53Y 6.70/ 4.60, GLOSS 20,	0.017 GA
HA3100A26	THRUBOLT 10-32 X 11.500	4.000 EA
LC0005E01	CONN.DIA./WARNING LABEL (LC0005/LB1119N)	1.000 EA
MN416A01	TAG-INSTAL-MAINT no wire (1000/bx) 11/14	1.000 EA
NP3155L	ALUM SUPER-E UL CSA CC "SEMS"	1.000 EA
36PA1000	PKG GRP, PRINT PK1016A06	1.000 EA

**AC Induction Motor Performance Data**

Record # 44939 - Typical performance - not guaranteed values

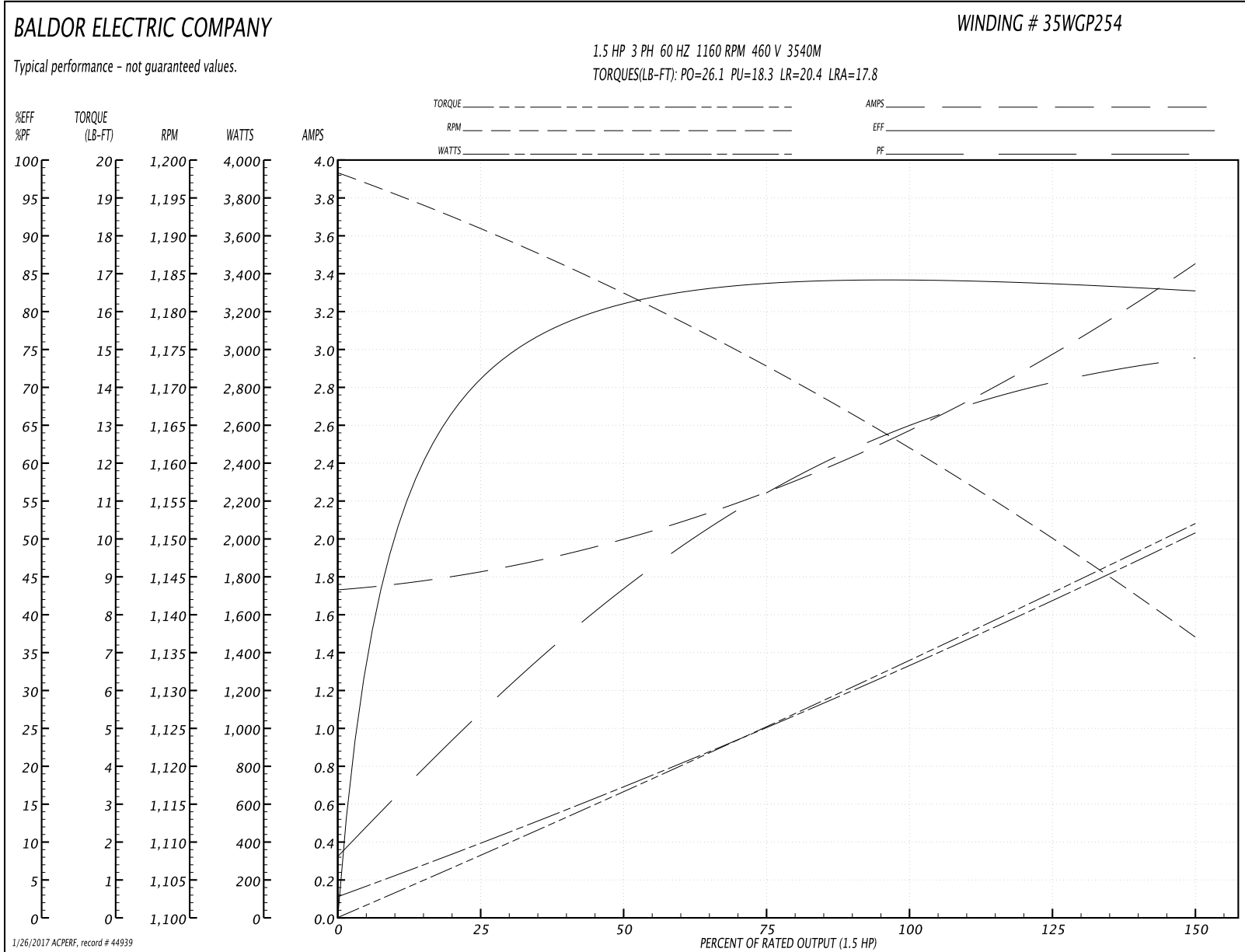
<b>Winding:</b> 35WGP254-R004	<b>Type:</b> 3540M	<b>Enclosure:</b> OPEN
-------------------------------	--------------------	------------------------

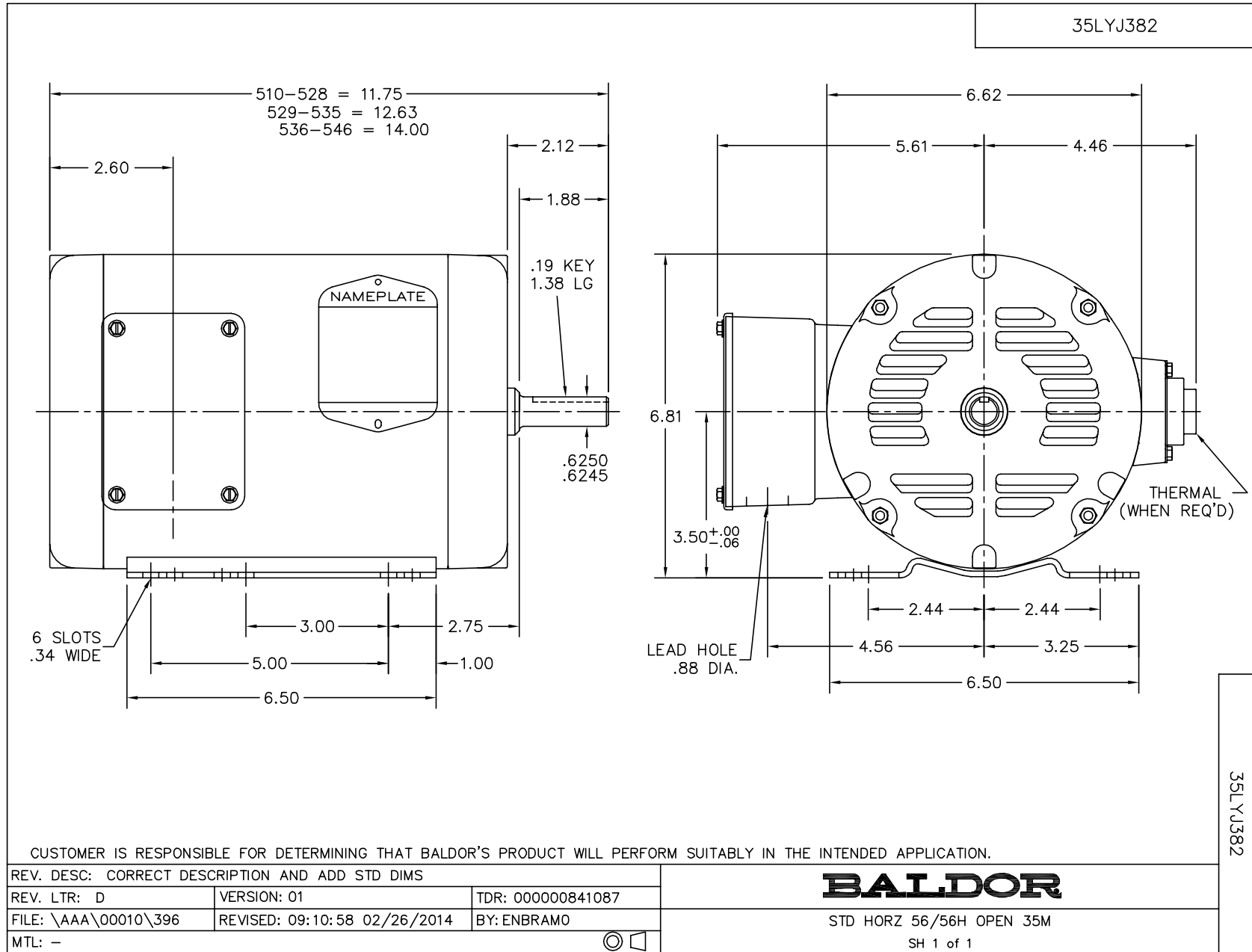
Nameplate Data				460 V, 60 Hz: High Voltage Connection	
Rated Output (HP)	1.5			Full Load Torque	6.81 LB-FT
Volts	230/460			Start Configuration	direct on line
Full Load Amps	5.2/2.6			Breakdown Torque	26.1 LB-FT
R.P.M.	1160			Pull-up Torque	18.3 LB-FT
Hz	60	Phase	3	Locked-rotor Torque	20.4 LB-FT
NEMA Design Code	B	KVA Code	L	Starting Current	17.8 A
Service Factor (S.F.)	1.15			No-load Current	1.74 A
NEMA Nom. Eff.	84	Power Factor	65	Line-line Res. @ 25°C	8.35 Ω
Rating - Duty	40C AMB-CONT			Temp. Rise @ Rated Load	40°C
S.F. Amps				Temp. Rise @ S.F. Load	51°C
				Locked-rotor Power Factor	37
				Rotor inertia	0.238 LB-FT <sup>2</sup>

Load Characteristics 460 V, 60 Hz, 1.5 HP

% of Rated Load	25	50	75	100	125	150	S.F.
Power Factor	28	44	56	65	70	74	68
Efficiency	71.5	80.8	83.7	84.2	84	82.7	84.2
Speed	1190	1182	1173	1162	1152	1136	1156
Line amperes	1.82	1.99	2.24	2.59	2.96	3.45	2.81

Performance Graph at 460V, 60Hz, 1.5HP Typical performance - Not guaranteed values

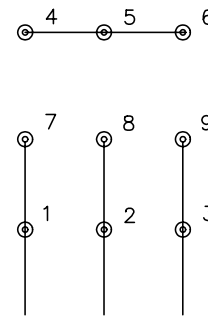




CD0005

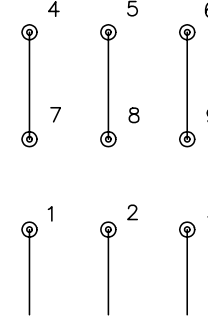


LOW VOLTAGE  
(2Y)



LINE

HIGH VOLTAGE  
(1Y)



LINE

NOTES:

1. INTERCHANGE ANY TWO LINE LEADS TO REVERSE ROTATION.
2. OPTIONAL THERMOSTATS ARE PROVIDED WHEN SPECIFIED.
3. ACTUAL NUMBER OF INTERNAL PARALLEL CIRCUITS MAY BE A MULTIPLE OF THOSE SHOWN ABOVE.
4. LEAD COLORS ARE OPTIONAL. LEADS MUST ALWAYS BE NUMBERED AS SHOWN.

REV. DESC: REVISE TO SHOW OPTIONAL COLORS			
REV. LTR: E	BY: JLP	REVISED: 01/19/99 10:15	TDR: 0171435
90000		FILE: AAA00005140	MDL: -
		MTL: -	

**BALDOR ELECTRIC Co.**

3PH, DV, 9 LEADS

CD0005