

BALDOR® • ***RELIANCE***

Product Information Packet

MM3457

.25KW,3450RPM,3PH,60HZ,D63,3320M,TEFC,F2

Part Detail							
Revision:	E	Status:	INA/A	Change #:		Proprietary:	No
Type:	AC	Prod. Type:	3320M	Elec. Spec:	33WG1344	CD Diagram:	CD0005A05
Enclosure:	TEFC	Mfg Plant:		Mech. Spec:		Layout:	33LY1792
Frame:	D63	Mounting:	F2	Poles:	02	Created Date:	11-04-2013
Base:		Rotation:	R	Insulation:	F	Eff. Date:	07-25-2016
Leads:	9#18					Replaced By:	
Literature:		Elec. Diagram:					

Nameplate NP1379L	
CAT.NO.	
SPEC.	33-1792-1344G1
IEC FRAME	D63
VOLTS	230/460
AMP	1.2/.6
RPM	3450
HZ	60
SER.F.	1.35
NEMA-NOM-EFF	72
RATING	40C AMB-CONT
CC	
DE	6203
SER. #	
	SFA 1.4/.7

K.W.	.25KW TE
I.P.	54
PH	3
CL	F
DES	-
CODE	-
PF	70
USABLE AT 208V	1.5
ODE	

Parts List		
Part Number	Description	Quantity
SA272875	SA 33-1792-1344G1	1.000 EA
RA259480	RA 33-1792-1344G1	1.000 EA
LC0005	CONN.DIA.,TY M,9-LD,DUAL VOLT,REVERSING	1.000 EA
33EP3100A02	PU ENDPLATE, MACH	1.000 EA
34GS1029A01	GASKET, CONDUIT BOX	1.000 EA
34CB3002A16	CB W/.50 N.P.T. @ 6	1.000 EA
51XB1016A07	10-16 X 7/16 HXWSSLD SERTYB	2.000 EA
11XW1032G06	10-32 X .38, TAPTITE II, HEX WSHR SLTD U	1.000 EA
34GS1031A01	GASKET, FLAT CONDUIT BOX LID (LEXIDE)	1.000 EA
34CB4517	CB LID 4 MTG HOLES .22 DIA STAMPED, FOR	1.000 EA
51XW0832A07	8-32 X .44, TAPTITE II, HEX WSHR SLTD SE	4.000 EA
33EP3100A01SP	EP,33AC ODE GP 6203 TEFC W/DRAIN	1.000 EA
HW5109A05	WASHER, WAVE SPRING FOR 40MM BORE SMALLE	1.000 EA
33FN3000SP	EXTERNAL FAN, PLASTIC	1.000 EA
12XN0832A16	8-32 X 1.00" SLT HEX HD ZINC PLATED	1.000 EA
HW1003A08	WASHER, #8 EX TH LK, ZN (F/S)	1.000 EA
XY0832A02	8-32 HEX NUT	1.000 EA
33FH4001A01	FAN COVER, STAMPED	1.000 EA
11XT1032A06	10-32 X 3/8 HX WSHR HD SLTD TYPE 23	3.000 EA
HA3100A47	THRUBOLT 10-32 X 7.625	2.000 EA
XY1032A02	10-32 HEX NUT DIRECTIONAL SERRATION	2.000 EA
HW2504C02	KEY, 4 MM X .500	1.000 EA
MG1000G27	MED CHARCOAL METALLIC GREY 400-0096	0.013 GA
LB1119N	WARNING LABEL	1.000 EA

Parts List (continued)		
Part Number	Description	Quantity
NP1379L	ALUM IEC UL CSA CC	1.000 EA
BMH4109	RIVET,42 FRAME	2.000 EA
34PA1002	PKG GRP, PRINT PK1001A01	1.000 EA
ME4000	.375-.75" DIA.#SW-04 WOVEN SHAFT PROTECT	0.125 FT

AC Induction Motor Performance Data

Record # 42774 - Typical performance - not guaranteed values

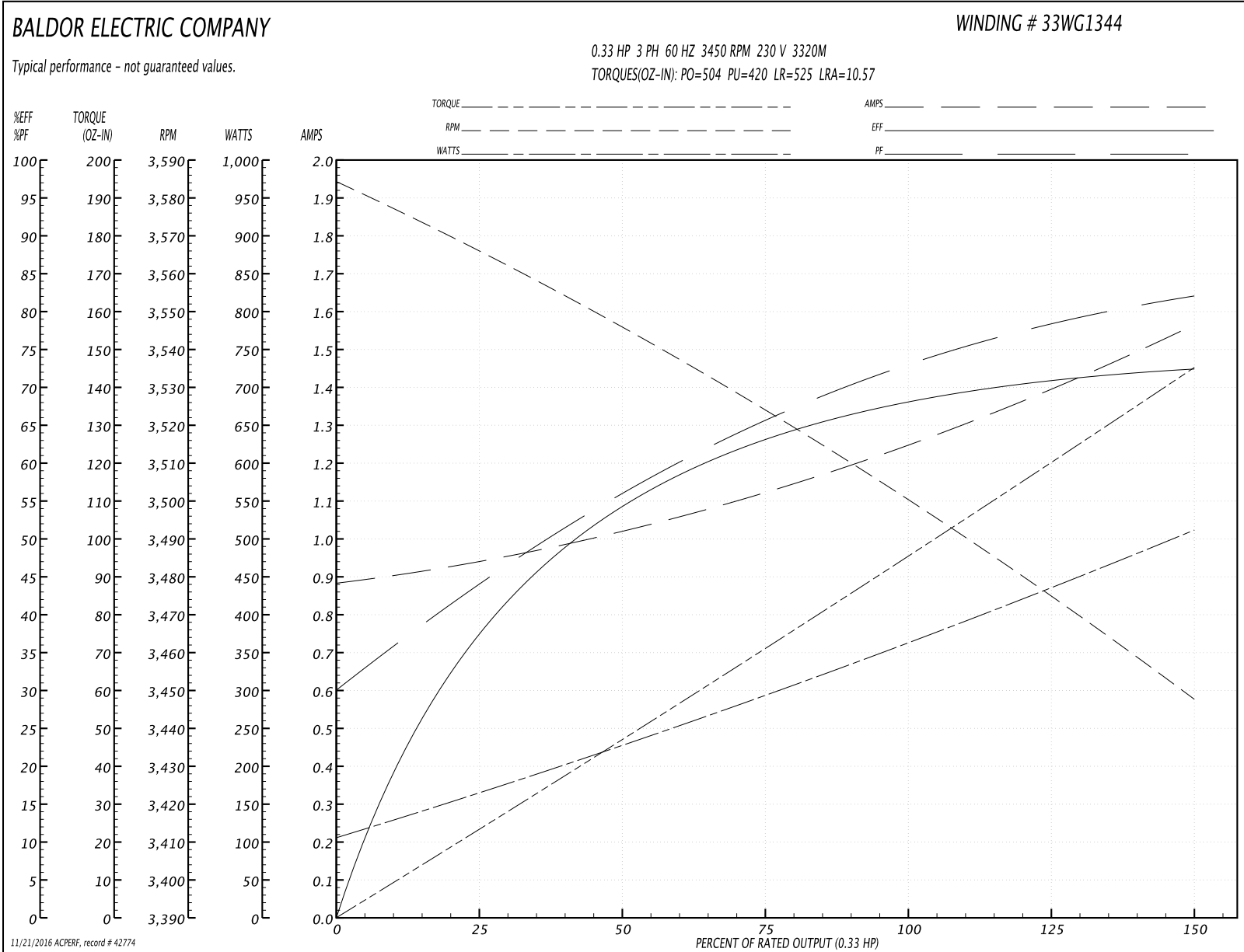
Winding: 33WG1344-R007	Type: 3320M	Enclosure: TEFC
-------------------------------	--------------------	------------------------

Nameplate Data				230 V, 60 Hz: Low Voltage Connection	
Rated Output (HP)	.33			Full Load Torque	95 OZ-IN
Volts	230/460			Start Configuration	direct on line
Full Load Amps	1.2/.6			Breakdown Torque	504 OZ-IN
R.P.M.	3450			Pull-up Torque	420 OZ-IN
Hz	60	Phase	3	Locked-rotor Torque	525 OZ-IN
NEMA Design Code	-	KVA Code	-	Starting Current	10.57 A
Service Factor (S.F.)	1.35			No-load Current	0.89 A
NEMA Nom. Eff.	72	Power Factor	70	Line-line Res. @ 25°C	10.82 Ω
Rating - Duty	40C AMB-CONT			Temp. Rise @ Rated Load	
S.F. Amps	1.4/.7			Temp. Rise @ S.F. Load	
				Locked-rotor Power Factor	79
				Rotor inertia	42.7 LB-FT ²

Load Characteristics 230 V, 60 Hz, 0.33 HP

% of Rated Load	25	50	75	100	125	150	S.F.
Power Factor	44	56	66	73	78	82	80
Efficiency	38.1	54.6	63	67.8	70.6	72.7	71.4
Speed	3566	3547	3524	3500	3475	3448	3463
Line amperes	0.93	1.02	1.12	1.25	1.4	1.56	1.46

Performance Graph at 230V, 60Hz, 0.33HP Typical performance - Not guaranteed values



AC Induction Motor Performance Data

Record # 42776 - Typical performance - not guaranteed values

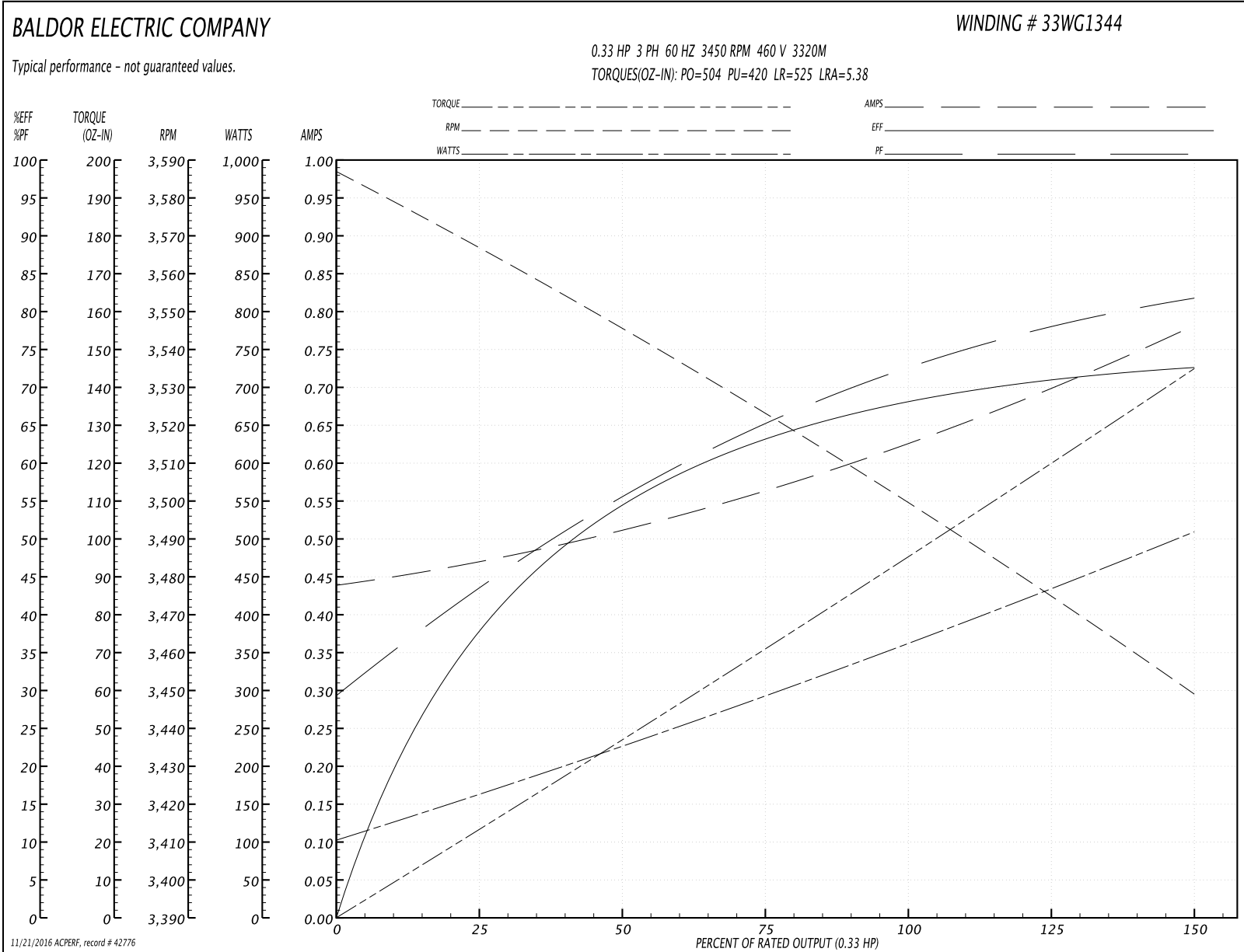
Winding: 33WG1344-R007	Type: 3320M	Enclosure: TEFC
-------------------------------	--------------------	------------------------

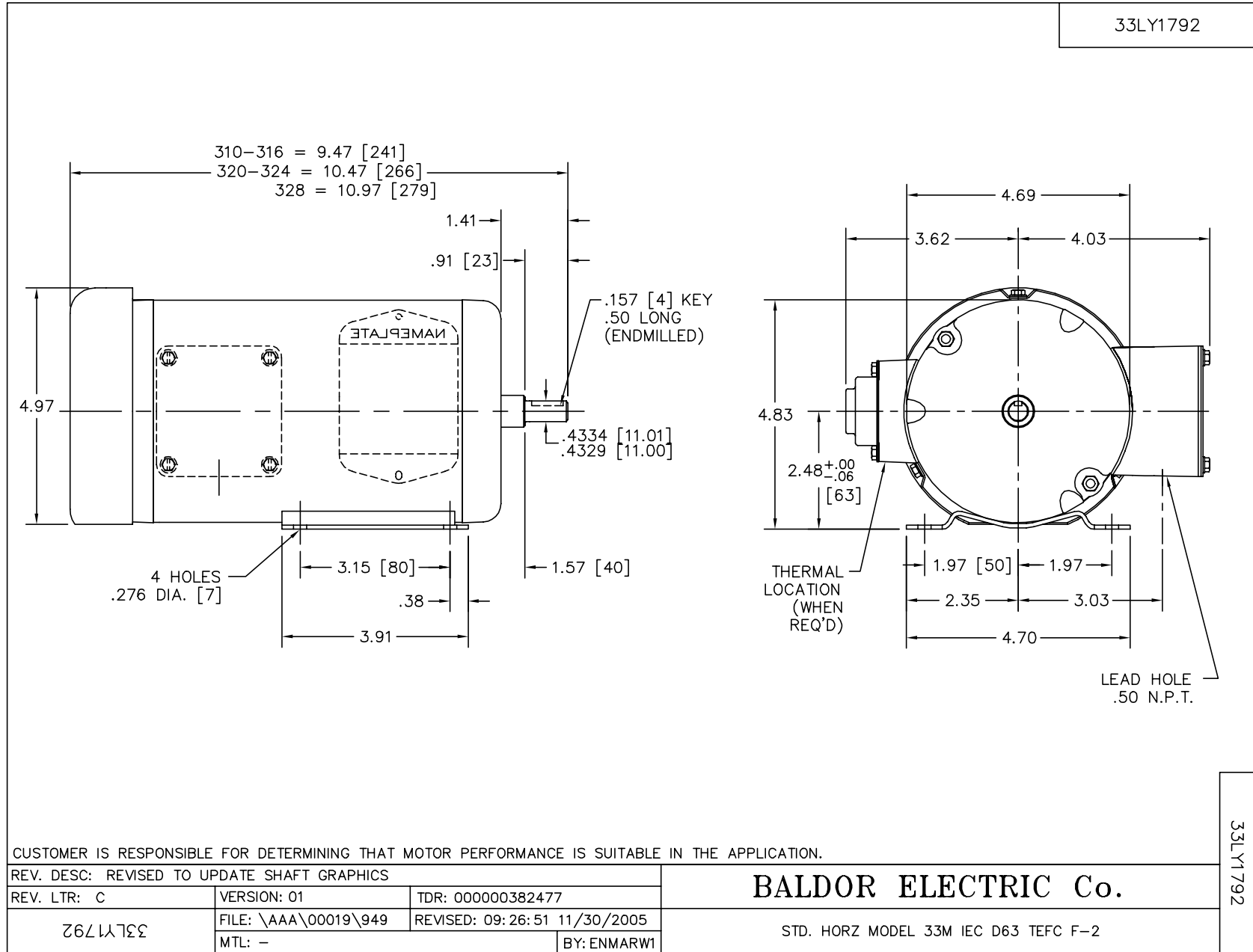
Nameplate Data				460 V, 60 Hz: High Voltage Connection	
Rated Output (HP)	.33			Full Load Torque	95 OZ-IN
Volts	230/460			Start Configuration	direct on line
Full Load Amps	1.2/.6			Breakdown Torque	504 OZ-IN
R.P.M.	3450			Pull-up Torque	420 OZ-IN
Hz	60	Phase	3	Locked-rotor Torque	525 OZ-IN
NEMA Design Code	-	KVA Code	-	Starting Current	5.38 A
Service Factor (S.F.)	1.35			No-load Current	0.44 A
NEMA Nom. Eff.	72	Power Factor	70	Line-line Res. @ 25°C	43.28 Ω
Rating - Duty	40C AMB-CONT			Temp. Rise @ Rated Load	
S.F. Amps	1.4/.7			Temp. Rise @ S.F. Load	
				Locked-rotor Power Factor	79
				Rotor inertia	42.7 LB-FT ²

Load Characteristics 460 V, 60 Hz, 0.33 HP

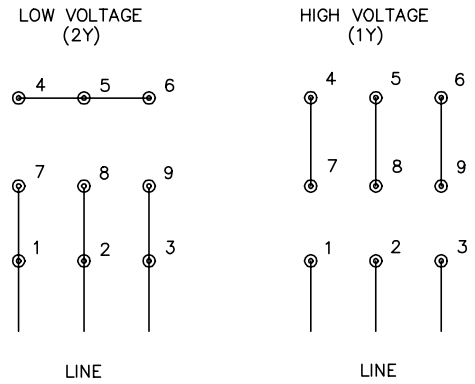
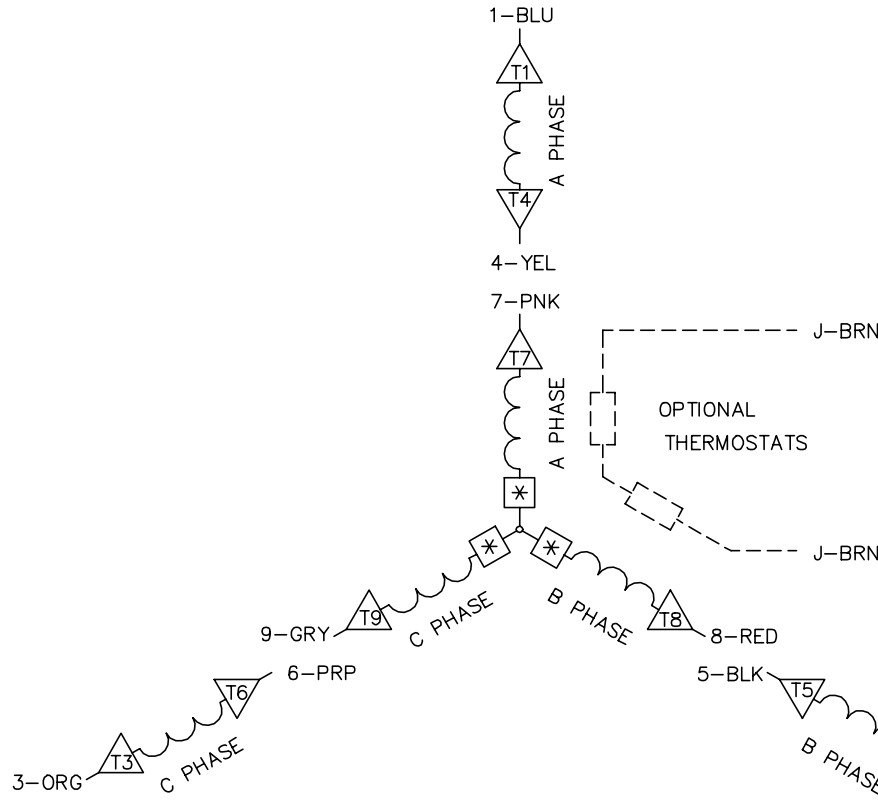
% of Rated Load	25	50	75	100	125	150	S.F.
Power Factor	44	56	65	72	78	82	80
Efficiency	38.4	54.4	63.4	68	70.9	72.7	71.6
Speed	3566	3547	3522	3500	3475	3449	3463
Line amperes	0.47	0.51	0.56	0.63	0.7	0.78	0.73

Performance Graph at 460V, 60Hz, 0.33HP Typical performance - Not guaranteed values





CD0005A05



- NOTES:
1. INTERCHANGE ANY TWO LINE LEADS TO REVERSE ROTATION.
 2. OPTIONAL THERMOSTATS ARE PROVIDED WHEN SPECIFIED.
 3. ACTUAL NUMBER OF INTERNAL PARALLEL CIRCUITS MAY BE A MULTIPLE OF THOSE SHOWN ABOVE.
 4. LEAD COLORS ARE OPTIONAL. LEADS MUST ALWAYS BE NUMBERED AS SHOWN.
 5. =MAGNET WIRE COIL END WITH I.D. NUMBER.
 6. =MAGNET WIRE COIL END WITH I.D. SYMBOL.
 7. SEE CW PRINT FOR NEST TO NEST CROSSOVER CONNECTIONS.

CD0005A05

REV. DESC: ADD NEST NOTE			
REV. LTR: C	VERSION: 03	TDR: 000000445597	
CD0005A05	FILE: \CKA\00024\847	REVISED: 12:51:06 11/15/2007	
	MTL: -	BY: CKMICRO	

BALDOR • DODGE • RELIANCE

3PH, DV, 9 LEADS, CK