

# **BALDOR**® • **RELIANCE**

## **Product Information Packet**

# **VEDM3611T**

**3HP, 1760RPM, 3PH, 60HZ, 182TC, 3632M, TEFC, F1**

| Part Detail |       |                |       |             |          |               |            |
|-------------|-------|----------------|-------|-------------|----------|---------------|------------|
| Revision:   | C     | Status:        | PRD/A | Change #:   |          | Proprietary:  | No         |
| Type:       | AC    | Prod. Type:    | 3632M | Elec. Spec: | 36WGS266 | CD Diagram:   | CD0005     |
| Enclosure:  | TEFC  | Mfg Plant:     |       | Mech. Spec: | 36Q733   | Layout:       | 36LYQ733   |
| Frame:      | 182TC | Mounting:      | F1    | Poles:      | 04       | Created Date: | 04-21-2016 |
| Base:       | N     | Rotation:      | R     | Insulation: | F        | Eff. Date:    | 10-20-2016 |
| Leads:      | 9#16  |                |       |             |          | Replaced By:  |            |
| Literature: |       | Elec. Diagram: |       |             |          |               |            |

| Nameplate NP3504E |               |
|-------------------|---------------|
| CAT NO            | VEDM3611T     |
| SPEC.             | 36Q733S266G1  |
| FRAME             | 182TC         |
| VOLTS             | 230/460       |
| FLA               | 8.4/4.2       |
| RPM               | 1760          |
| HZ                | 60            |
| SER.F.            | 1.15          |
| NEMA-NOM-EFF      | 89.5          |
| RATING            | 40C AMB-CONT  |
| DE BRG            | 6206          |
| GREASE            | POLYREX EM    |
| C HP FR           | 60            |
| CT HZ FROM        | 6             |
| SER.NO            | 50C AT 1.0 SF |
| ENCL              | TEFC          |
| HP                | 3             |
| I.P.              | 56            |
| RPM MAX           | 2700          |
| PH                | 3             |
| CLASS             | F             |
| DES               | B             |
| CC                | 010A          |
| VT HZ FROM        | 6             |
| VT HZ TO          | 60            |
| C HP TO           | 90            |
| CT HZ TO          | 60            |
| ODE BRG           | 6205          |

| Parts List     |  |          |
|----------------|--|----------|
| Part Number    | Description                              | Quantity |
| SA319884       | SA 36Q733S266G1                          | 1.000 EA |
| RA307594       | RA 36Q733S266G1                          | 1.000 EA |
| 36CB1000A02E   | CONDUIT BOX .75 NPT @ 6:00 W/ECOATED     | 1.000 EA |
| 37GS1005       | GASKET - CONDUT BOX 37 FRAME .125 THK NE | 1.000 EA |
| 51XB1016A10    | 10-16X 5/8HXWSSLD SERTYB                 | 2.000 EA |
| 11XW1032G06    | 10-32 X .38, TAPTITE II, HEX WSHR SLTD U | 1.000 EA |
| HW3001B01      | BRASS CUP WASHER, FOR #8 SCREW           | 1.000 EA |
| 36EP1101D82LP2 | FRONT TEFC 205 BRG                       | 1.000 EA |
| HA4054         | SHORT T-DRAIN FITTING, .125" N.P.T.      | 1.000 EA |
| HW4500A33      | 1/8 NPT STAINLESS,HOLO-KROME #13002,PRES | 3.000 EA |
| HW4606A02      | JM CLIPPER/SEAL (LWE-0938-1624-AL23)     | 1.000 EA |
| HW5100A05      | WVY WSHR F/205 & 304 BRGS                | 1.000 EA |
| 36EP1300B13E   | PULLEY 182-4TC ENCL 206 BRG              | 1.000 EA |
| HA4054         | SHORT T-DRAIN FITTING, .125" N.P.T.      | 1.000 EA |
| HW4500A33      | 1/8 NPT STAINLESS,HOLO-KROME #13002,PRES | 3.000 EA |
| HW4606A03      | JM CLIPPER/SEAL (LWE-1156-1875-AL44)     | 1.000 EA |
| 10XN2520S26    | 1/4-20X 1 5/8 HEX HD SS                  | 4.000 EA |
| 36FH4010LP2    | IEC FH NO GREASER                        | 1.000 EA |
| 10XN1032S08    | 10-32X1/2 HEX HEAD S STL                 | 3.000 EA |
| 36CB4518E      | 36 LIPPED CB LID E-COATING               | 1.000 EA |
| 37GS1003       | 1/16 NEOPRENE GASKET-BLACK, CONDUIT BOX  | 1.000 EA |
| 59XW0832S07    | TAPTITE II,HEX WSHR UNSLTD SER,410 S.S., | 4.000 EA |
| HW2502E16      | #303 SS,SQ KEY 1/4 X 1.750               | 1.000 EA |
| HA7000A02      | KEY RETAINER RING, 1 1/8 DIA, 1 3/8 DIA  | 1.000 EA |

| <b>Parts List (continued)</b> |  |                 |
|-------------------------------|--|-----------------|
| <b>Part Number</b>            | <b>Description</b>                       | <b>Quantity</b> |
| MJ5001A02                     | 732 CL SEALANT 3 OZ DIXIE BEARING 289100 | 0.001 EA        |
| 85XU0407S04                   | 4X1/4 U DRIVE PIN STAINLESS              | 2.000 EA        |
| LB1164                        | LABEL,WARNING AND DRAIN                  | 1.000 EA        |
| MJ5001A23                     | P.D. GEORGE B-276 AIR DRY VARNISH        | 0.001 GA        |
| LB1000                        | LABEL, DIRTY DUTY                        | 1.000 EA        |
| WD1000D21                     | TRM,T&B #B71M,RING,18-14,.25,NON-INSL    | 9.000 EA        |
| MJ1000A02                     | GREASE, POLYREX EM EXXON (USe 4824-15A)  | 0.050 LB        |
| MG1500Y02                     | PRIMER,347.29+347.29C ACTIVATOR WILKOPON | 0.010 GA        |
| MG1025L01                     | WILKOFASFD, 786.04, BLACK                | 0.010 GA        |
| 36FN3000C01                   | EXFN, PLASTIC, 5.25 OD, .912 ID          | 1.000 EA        |
| 51XB1214A16                   | 12-14X1.00 HXWSSLD SERTYB                | 1.000 EA        |
| HA3101S25                     | THRUBOLT- 1/4-20 X 11.00 X               | 4.000 EA        |
| LC0005                        | CONN.DIA.,TY M,9-LD,DUAL VOLT,REVERSING  | 1.000 EA        |
| NP3504E                       | SS DIRTY DUTY PLUS INV UL CSA-C US EEV   | 1.000 EA        |
| G0PA1000                      | PKG GRP, PRINT PK1026A06                 | 1.000 EA        |
| PK3082                        | STYROFOAM CRADLE                         | 1.000 EA        |
| MN416A01                      | TAG-INSTAL-MAINT no wire (1200/bx) 11/14 | 1.000 EA        |

**AC Induction Motor Performance Data**

Record # 55770 - Typical performance - not guaranteed values

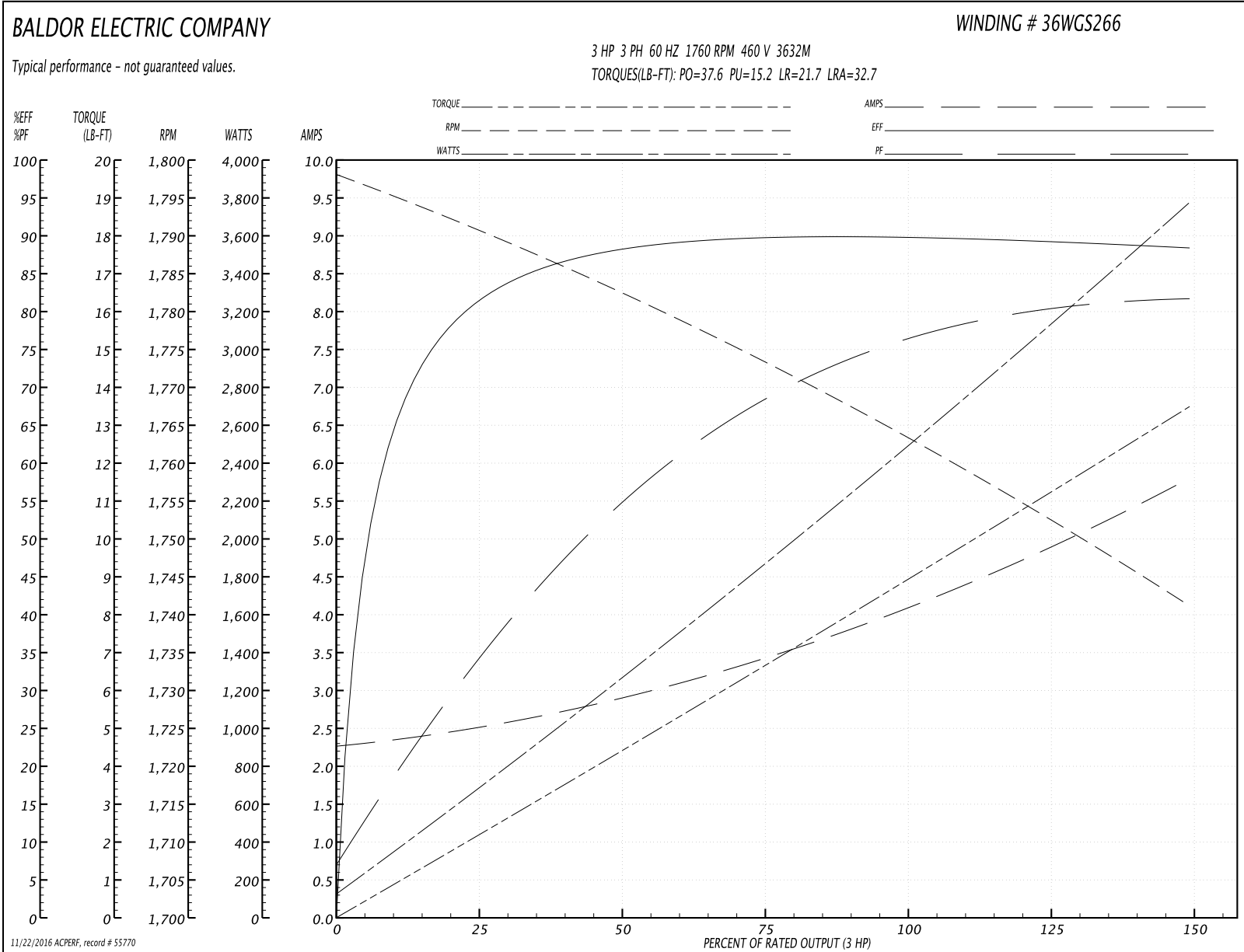
|                               |                    |                        |
|-------------------------------|--------------------|------------------------|
| <b>Winding:</b> 36WGS266-R030 | <b>Type:</b> 3632M | <b>Enclosure:</b> TEFC |
|-------------------------------|--------------------|------------------------|

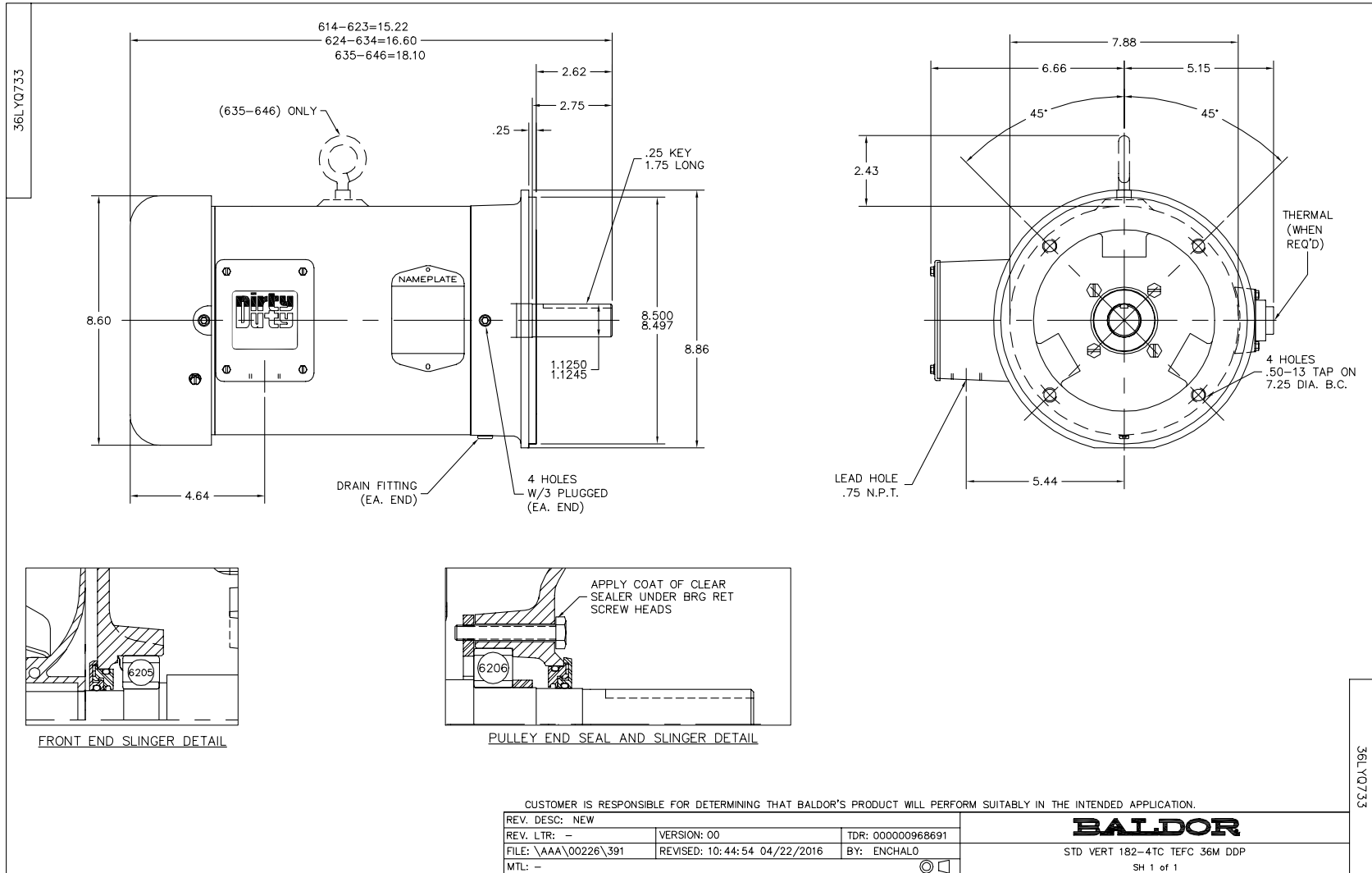
| Nameplate Data        |              |              |    | 460 V, 60 Hz:<br>High Voltage Connection |                        |
|-----------------------|--------------|--------------|----|--|------------------------|
| Rated Output (HP)     | 3            |              |    | Full Load Torque                         | 8.8 LB-FT              |
| Volts                 | 230/460      |              |    | Start Configuration                      | direct on line         |
| Full Load Amps        | 8.4/4.2      |              |    | Breakdown Torque                         | 37.6 LB-FT             |
| R.P.M.                | 1760         |              |    | Pull-up Torque                           | 15.2 LB-FT             |
| Hz                    | 60           | Phase        | 3  | Locked-rotor Torque                      | 21.7 LB-FT             |
| NEMA Design Code      | B            | KVA Code     | K  | Starting Current                         | 32.7 A                 |
| Service Factor (S.F.) | 1.15         |              |    | No-load Current                          | 2.3 A                  |
| NEMA Nom. Eff.        | 89.5         | Power Factor | 75 | Line-line Res. @ 25°C                    | 3.81 Ω                 |
| Rating - Duty         | 40C AMB-CONT |              |    | Temp. Rise @ Rated Load                  | 44°C                   |
| S.F. Amps             |              |              |    | Temp. Rise @ S.F. Load                   | 52°C                   |
|                       |              |              |    | Locked-rotor Power Factor                | 42.2                   |
|                       |              |              |    | Rotor inertia                            | 0.3 LB-FT <sup>2</sup> |

Load Characteristics 460 V, 60 Hz, 3 HP

| % of Rated Load | 25   | 50   | 75   | 100  | 125  | 150  | S.F. |
|-----------------|------|------|------|------|------|------|------|
| Power Factor    | 35   | 55   | 68   | 75   | 80   | 82   | 77   |
| Efficiency      | 81.1 | 87.8 | 89.6 | 89.8 | 89.7 | 88.2 | 89.2 |
| Speed           | 1791 | 1783 | 1773 | 1764 | 1753 | 1741 | 1754 |
| Line amperes    | 2.47 | 2.85 | 3.43 | 4.09 | 4.89 | 5.78 | 4.63 |

Performance Graph at 460V, 60Hz, 3.0HP Typical performance - Not guaranteed values





CD0005



LOW VOLTAGE  
(2Y)



LINE

HIGH VOLTAGE  
(1Y)



LINE

NOTES:

1. INTERCHANGE ANY TWO LINE LEADS TO REVERSE ROTATION.
2. OPTIONAL THERMOSTATS ARE PROVIDED WHEN SPECIFIED.
3. ACTUAL NUMBER OF INTERNAL PARALLEL CIRCUITS MAY BE A MULTIPLE OF THOSE SHOWN ABOVE.
4. LEAD COLORS ARE OPTIONAL. LEADS MUST ALWAYS BE NUMBERED AS SHOWN.

|   |         |                         |              |
|---|---------|-------------------------|--------------|
| REV. DESC: REVISE TO SHOW OPTIONAL COLORS |         |                         |              |
| REV. LTR: E                               | BY: JLP | REVISED: 01/19/99 10:15 | TDR: 0171435 |
| 9000D                                     |         | FILE: AAA00005140       | MDL: -       |
|   |         | MTL: -                  |              |

**BALDOR ELECTRIC Co.**

3PH, DV, 9 LEADS

CD0005