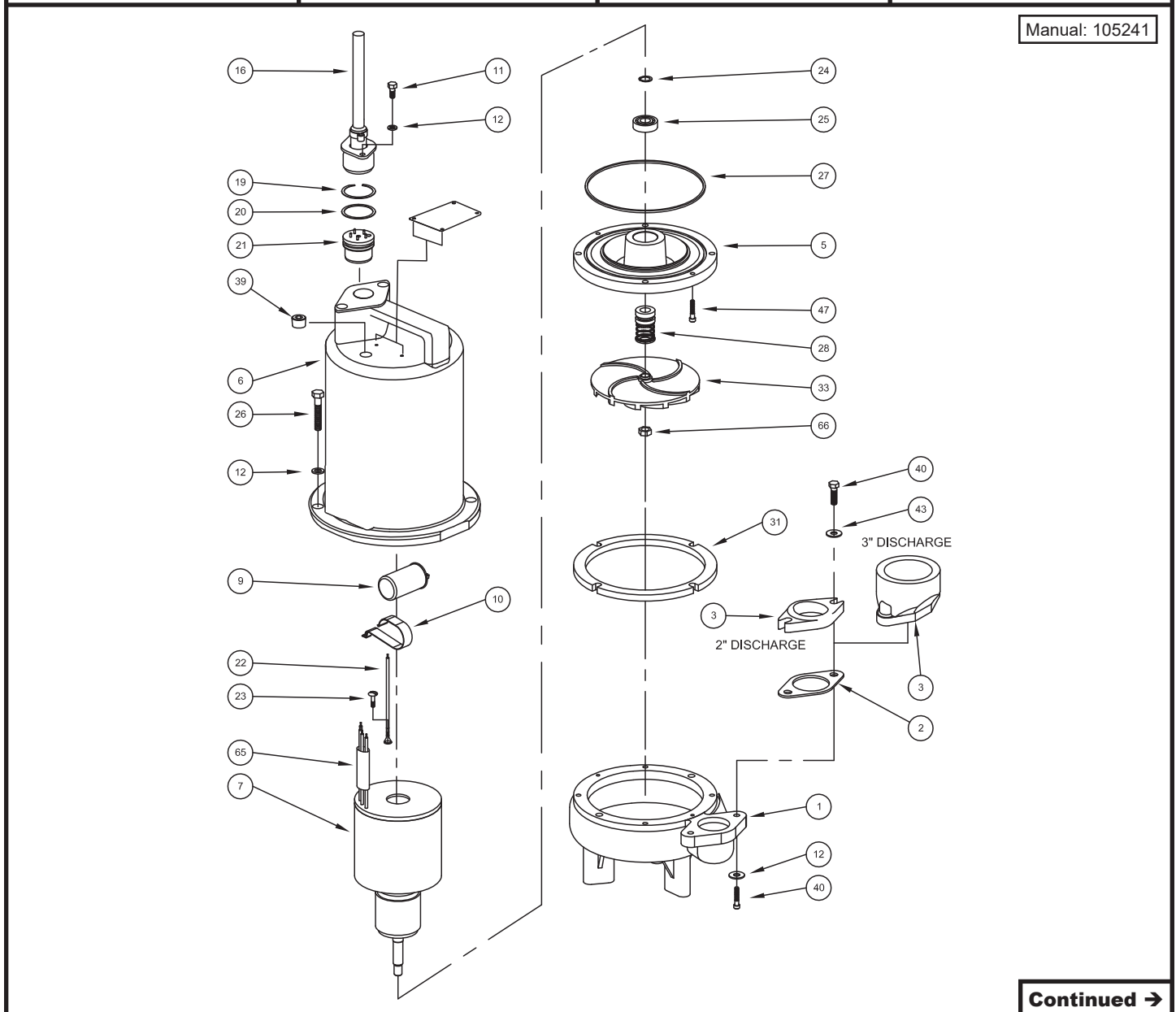


BARNES • PROSSER • CROWN SERVICE PARTS

MODEL	PART NO.	MODEL	PART NO.	MODEL	PART NO.	MODEL	PART NO.
2SEV-L, 1750RPM		2SEV-L, 3450RPM		3SEV-L, 1750RPM		3SEV-L, 3450RPM	
2SEV514L	104918	2SEV512L	104970	3SEV594L	104946	3SEV512L	104992
2SEV524L	104919	2SEV522L	104971	3SEV544L	104947	3SEV522L	104993
2SEV594L	104920	2SEV592L	104972	3SEV724L	104954	3SEV592L	104994
2SEV544L	104921	2SEV542L	104974	3SEV794L	104955	3SEV542L	104996
2SEV554L	104922	2SEV552L	104975	3SEV744L	104956	3SEV552L	104997
2SEV724L	104928	2SEV1022L	104982	3SEV754L	104957	3SEV1022L	105004
2SEV794L	104929	2SEV1092L	104983	3SEV1024L	104962	3SEV1092L	105005
2SEV744L	104930	2SEV1042L	104985	3SEV1094L	104963	3SEV1042L	105007
2SEV754L	104931	2SEV1052L	104986	3SEV1044L	104964	3SEV1052L	105008
2SEV1024L	104936			3SEV1054L	104965		
2SEV1094L	104937	3SEV-L, 1750RPM					
2SEV1044L	104938	3SEV514L	104944				
2SEV1054L	104939	3SEV524L	104945				



Manual: 105241

Continued →

Series 2SEV-L & 3SEV-L

2" & 3" NPT Discharge - Submersible Sewage Ejectors

.5, .75 & 1.0HP, 1750 & 3450RPM

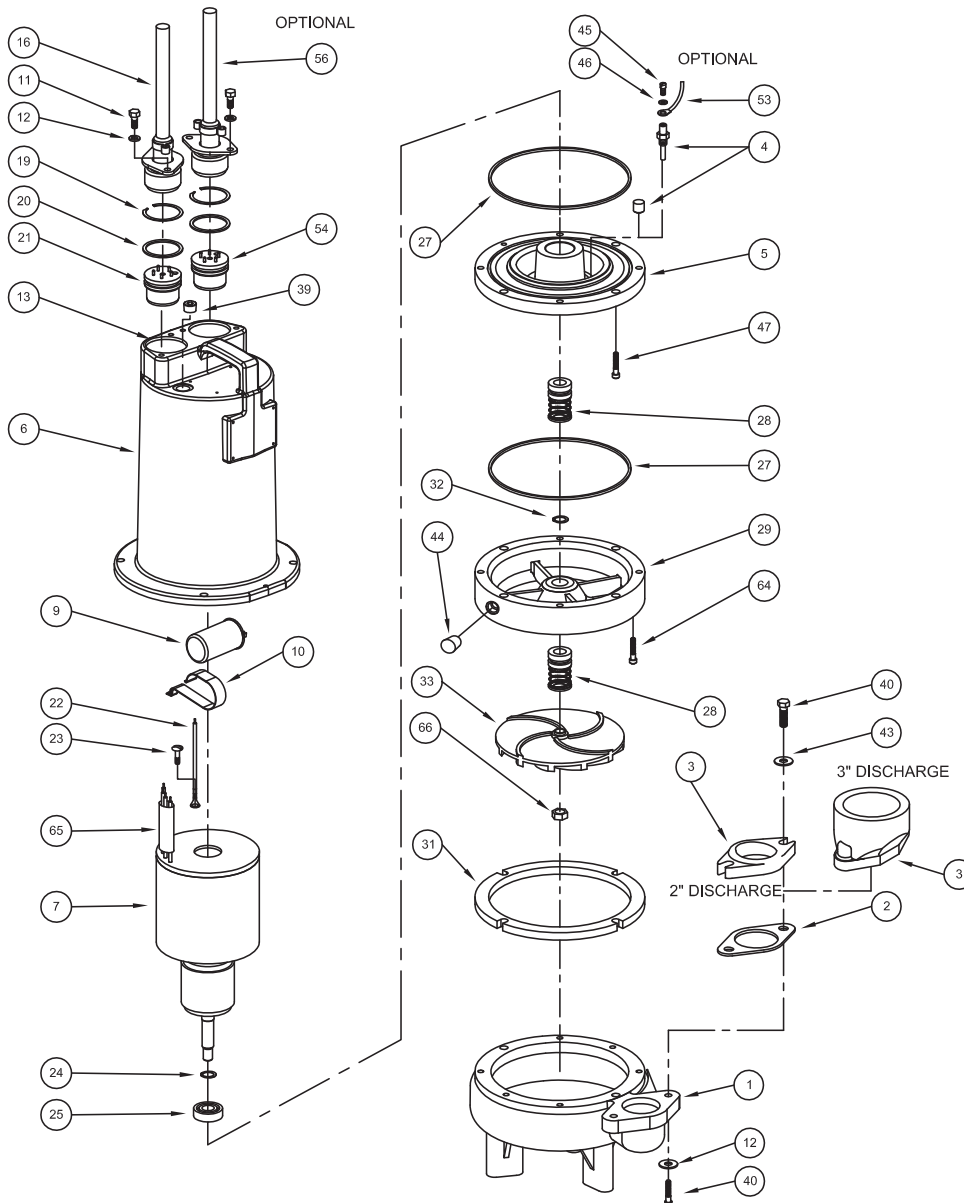
BARNES®

www.cranepumps.com

BARNES • PROSSER • CROWN SERVICE PARTS

MODEL	PART NO.	MODEL	PART NO.	MODEL	PART NO.	MODEL	PART NO.
2SEV-DS, 1750RPM		2SEV-DS, 3450RPM		3SEV594DS		3SEV-DS, 3450RPM	
2SEV514DS	104923	2SEV512DS	104976	3SEV544DS	104952	3SEV512DS	104998
2SEV524DS	104924	2SEV522DS	104977	3SEV554DS	104953	3SEV522DS	104999
2SEV594DS	104925	2SEV592DS	104978	3SEV724DS	104958	3SEV592DS	105000
2SEV544DS	104926	2SEV542DS	104980	3SEV794DS	104959	3SEV542DS	105002
2SEV554DS	104927	2SEV552DS	104981	3SEV744DS	104960	3SEV552DS	105003
2SEV724DS	104932	2SEV1022DS	104987	3SEV754DS	104961	3SEV1022DS	105009
2SEV794DS	104933	2SEV1092DS	104988	3SEV1024DS	104966	3SEV1092DS	105010
2SEV744DS	104934	2SEV1042DS	104990	3SEV1094DS	104967	3SEV1042DS	105012
2SEV754DS	104935	2SEV1052DS	104991	3SEV1044DS	104968	3SEV1052DS	105013
2SEV1024DS	104940			3SEV1054DS	104969		
2SEV1094DS	104941	3SEV-DS, 1750RPM					
2SEV1044DS	104942	3SEV514DS	104949				
2SEV1054DS	104943	3SEV524DS	104950				

Manual: 105241



Continued →

SECTION 1B
PAGE 72
DATE 12/16

CRANE®

A Crane Co. Company

PUMPS & SYSTEMS

USA: (937) 778-8947 • Canada: (905) 457-6223 • International: (937) 615-3598

BARNES • PROSSER • CROWN SERVICE PARTS

PARTS KITS

Seal Repair Kits:

Single SealP/N - 130180 (+) 2, 20, 27, 28, 36

Double SealP/N - 130176 (†) 2, 20, 27, 28, 32, 36

Service Kits:

Single Seal.....P/N - 130207 (◇) 2, 19, 20, 22, 24, 25, 27, 28, 36, 49, 65, 66

Double SealP/N - 130172 (◆) 2, 19, 20, 22, 24, 25, 27, 28, 32, 36, 44, 49, 65, 66

Seal Tool KitP/N - 107271

Pressure Gauge KitP/N - 085343

PARTS LIST

ITEM	QTY.	PART NO.	DESCRIPTION	
1	1	055400	Volute	
2	1	069140	+†◇ Gasket	
3	1	026210	Flange, 2" Discharge	
		105153	Flange, 3" Discharge	
4	2	003217	Pipe Plug	All double seal (Std), .25" NPT, ZP
	2	039383	Moisture Sensor Probes	(Optional) for moisture sensor
5	1	084532	Seal Plate	All single seal
		084906		All double seal
6	1	108342A	Motor Housing	(Std)
		110328B		(Optional) for moisture and temp. sensors
7	1		Motor:	
		030369BS	2SEV514L, 3SEV514L	
		030369BD	2SEV514DS, 3SEV514DS	
		030370BS	2SEV524L, 3SEV524L	
		030370BD	2SEV524DS, 3SEV524DS	
		071352BS	2SEV594L, 3SEV594L, 2SEV544L, 3SEV544L	
		071352BD	2SEV594DS, 3SEV594DS, 2SEV544DS, 3SEV544DS	
		092854BS	2SEV554L, 3SEV554L	
		092854BD	2SEV554DS, 3SEV554DS	
		029792BS	2SEV724L, 3SEV724L, 2SEV1024L, 3SEV1024L	
		029792BD	2SEV724DS, 3SEV724DS, 2SEV1024DS, 3SEV1024DS	
		071354BS	2SEV794L, 2SEV744L, 3SEV794L, 3SEV744L, 2SEV1094L, 2SEV1044L, 3SEV1094L, 3SEV1044L	
		071354BD	2SEV794DS, 2SEV744DS, 3SEV794DS, 3SEV744DS, 2SEV1094DS, 2SEV1044DS	
		071354BD	3SEV1094DS, 3SEV1044DS	
		092855BS	2SEV754L, 3SEV754L, 2SEV1054L, 3SEV1054L	
		092855BD	2SEV754DS, 3SEV754DS, 2SEV1054DS, 3SEV1054DS	
		068926BS	2SEV512L, 3SEV512L	
		068926BD	2SEV512DS, 3SEV512DS	
		068927BS	2SEV522L, 3SEV522L	
		068927BD	2SEV522DS, 3SEV522DS	
		068928BS	2SEV1022L, 3SEV1022L	
		068928BD	2SEV1022DS, 3SEV1022DS	
		071355BS	2SEV532L, 2SEV542L, 2SEV562L, 3SEV532L, 3SEV542L, 3SEV562L, 2SEV1032L	
		071355BS	2SEV1042L, 2SEV1062L, 3SEV1032L, 3SEV1042L, 3SEV1062L	
		071355BD	2SEV532DS, 2SEV542DS, 2SEV562DS, 3SEV532DS, 3SEV542DS, 3SEV562DS	
		071355BD	2SEV1032DS, 2SEV1042DS, 2SEV1062DS, 3SEV1032DS, 3SEV1042DS, 3SEV1062DS	
		067463FBS	2SEV552L, 3SEV552L, 2SEV1052L, 3SEV1052L	
		067463FBD	2SEV552DS, 3SEV552DS, 2SEV1052DS, 3SEV1052DS	
8	96oz	029034	Oil	All single seal
	120oz	029034	Oil	All double seal (Includes 24oz. in Seal Chamber)

Order Online: www.PumpCatalog.com

Continued →

CRANE[®]

A Crane Co. Company

PUMPS & SYSTEMS

* Units with build code date (see section G-4) before
-0901 may use capacitor part number, 070963 or the
034964 part number.

SECTION 1B
PAGE 73
DATE 12/16

USA: (937) 778-8947 • Canada: (905) 457-6223 • International: (937) 615-3598

Series 2SEV-L & 3SEV-L

2" & 3" NPT Discharge - Submersible Sewage Ejectors

.5, .75 & 1.0HP, 1750 & 3450RPM

BARNES®

www.cranepumps.com

BARNES • PROSSER • CROWN SERVICE PARTS

ITEM	QTY.	PART NO.	DESCRIPTION
9	1	034964*	Capacitor 1750RPM, 1 Phase, (30mfd)
		070965	Capacitor 3450 RPM, 1 Phase
10	1	039858	Capacitor Bracket 1 Phase
11	2	1-156-1	Hex. Hd. Cap Screw (Std), 5/16-18 x 1.00" Lg., Stainless
	6	1-156-1	Hex. Hd. Cap Screw (Optional) for moisture and temp. sensors
12	8	026322	Lockwasher (Std), 5/16, Stainless
	12	026322	Lockwasher (Optional) for moisture and temp. sensors
16	1	See Table 2	Power Cord Set
19	1	105197	◇ Snap Ring (Std)
	2	105197	◆ Snap Ring (Optional) for moisture and temp. sensors
20	1	2-31051-224	+◇ O-ring (Std)
	2	2-31051-224	†◆ O-ring (Optional) for moisture and temp. sensors
21	1	103584	Terminal Block 1 Phase
		103583	3 Phase
22	1	105111	◇◆ Ground Wire Assembly Std
	2	105111	Ground Wire Assembly (Optional) for moisture and temp. sensors
23	1	016660	Screw, Self Tapping #8-32 x .375" Lg., Stainless
24	1	085326	◇◆ Retaining Ring (Included with motor)
25	1	017414	◇◆ Bearing
26	4	1-158-1	Cap Screw All single seal, 5/16-18 x 2.50" Lg., Stainless
		0116491	All double seal
27	1	027269	+†◇◆ Square Ring All single seal
	2	027269	Square Ring All double seal
28	1		+†◇◆ Shaft Seal: (Qty 2 for DS)
		005080	Carbon/Ceramic/Buna-N (STD)
		005080SB	Tungsten/Tungsten/Buna-N
		005080SD	Silicon Carbide/Silicon Carbide/Buna-N
		005080SF	Carbon/Ceramic/Viton
		005080SH	Tungsten/Tungsten/Viton
		005080SK	Silicon Carbide/Silicon Carbide/Viton
		005080SM	Silicon Carbide/Tungsten/Buna-N
		005080SN	Carbon/Ni-Resistant/Buna-N
		005080SP	Carbon/Ni-Resistant/Neoprene
		082850	Carbon/Ni-Resistant/Viton
29	1	103587	Seal Housing All double seal
31	1	105145	Spacer Ring
32	1	2-27008-62	†◆ Retaining Ring All double seal
33	1		Impeller, Cast Iron, 3450RPM
		105144TH	4.25 Dia. (STD for a 1.0 HP)
		105144TJ	4.13 Dia.
		105144TK	4.00 Dia.
		105144TL	3.88 Dia.
		105144TM	3.75 Dia. (STD for a .5 HP)
		105144TN	3.63 Dia.
		105144TP	3.50 Dia.
		105144TQ	3.38 Dia.
		105144TR	3.25 Dia.
			Impeller, Cast Iron, 1750RPM
		105152TB	6.75 Dia. (STD for a 1.0 HP)
		105152TC	6.63 Dia.
		105152TD	6.50 Dia.
		105152TE	6.38 Dia.
		105152TF	6.25 Dia.
		105152TG	6.13 Dia.

Continued →

Order Online: www.PumpCatalog.com

SECTION 1B
PAGE 74
DATE 12/16

CRANE®

PUMPS & SYSTEMS

A Crane Co. Company

USA: (937) 778-8947 • Canada: (905) 457-6223 • International: (937) 615-3598

BARNES • PROSSER • CROWN SERVICE PARTS

ITEM	QTY.	PART NO.	DESCRIPTION
		105152TH	6.00 Dia. (STD for a .75 HP)
		105152TJ	5.88 Dia.
		105152TK	5.75 Dia.
		105152TL	5.63 Dia.
		105152TM	5.50 Dia.
		105152TN	5.38 Dia. (STD for a .5 HP)
		105152TP	5.25 Dia.
		105152TQ	5.13 Dia.
		105152TR	5.00 Dia.
39	1	014270	Pipe Plug .375" NPT, ZP
40	2	1-36-1	Hex. Hd. Cap Screw 2" Discharge, 3/8-16 x 1.25" Lg., Stainless
		2-23030-59	Soc. Hd. Cap Screw 3" Discharge, 5/16-18 x 1.50" Lg., Stainless
41	A/R	-----	Loctite 242
42	A/R	-----	Permatex 2C
43	2	082727	Washer 2" Discharge, 3/8" Stainless
44	1	003217	◆ Pipe Plug All double seal, .25" NPT, ZP
45	2	5-32-6	Screw (Optional) for moisture sensor, #6-32 x .25" Lg., ZP
46	2	052563	Lockwasher (Optional) for moisture sensor #6 Stl.
47	2	084948	Socket Head Screw 1/4-20 x 1.25" Lg., Stainless
48	1	See BOM	Terminal Connector 200-240V, 3Ph
	3	See BOM	Terminal Connector 480V, 3PH
49	3	105149	◆◆ Wire Assembly 200-240V, 3Ph
50	1	051621	Thermal Sensor (Optional) for temperature sensor, (Not Shown)
51	2	105155	Wire Assembly (Optional) for temperature sensor, (Not Shown)
52	2	134013	Terminal Connector (Optional) for temperature sensor, (Not Shown)
53	2	105106	Wire Assembly (Optional) for moisture sensor
54	1	103584	Terminal Block Temperature sensor options
		113272	Moisture and temp. sensor options
56	1	See Table 2	Control Cord (Optional) for moisture and/or temp. sensors
56a	1	103582	Compression Flange Included with Cord Set
57	A/R		Loctite 603
64	2	030337	Socket Head Cap Screw Double seal Only, 1/4-20 x 2" Lg., Stainless
65	1	625-02117	◆◆ Sleeve, Fiberglass
66	1	030068	◆◆ Jam Nut 1/2-20, SS
69	1	111909	Jumper Wire

TABLE 2 - POWER & SENSOR CORD SETS

CABLE LENGTH	ITEM #16 120 VOLT 1 PHASE (plug included)	ITEM #16 240 VOLT 1 PHASE 0.5HP (plug included)	ITEM #16 240 VOLT 1 PHASE 0.75 & 1HP (no plug)	ITEM #16 3 PHASE (no plug)	ITEM #56 (OPTIONAL) Temperature 3 Phase	ITEM #56 (OPTIONAL) Moisture and Temperature Sensor 3 Phase or Moisture Sensor
8 FT	103756A	-----	103741A	103742A	103741A	113288A
15 FT	103756	110949	103741	103742	103741	113288
20 FT (Std)	103756XA	110949XA	103741XA	103742XA	103741XA	113288XA
30 FT (Std)	103756XC	110949XC	103741XC	103742XC	103741XC	113288XC
50 FT	103756XF	110949XF	103741XF	103742XF	103741XF	113288XF
75 FT	103756XJ	110949XJ	103741XJ	103742XJ	103741XJ	113288XJ
100 FT	103756XL	110949XL	103741XL	103742XL	103741XL	113288XL

Order Online: www.PumpCatalog.com

END