



MARCH PUMPS

1819 PICKWICK AVE., GLENVIEW, IL 60026-1306, U.S.A
 PHONE: (847) 729-5300 - FAX: (847) 729-7062
 WWW.MARCHPUMP.COM

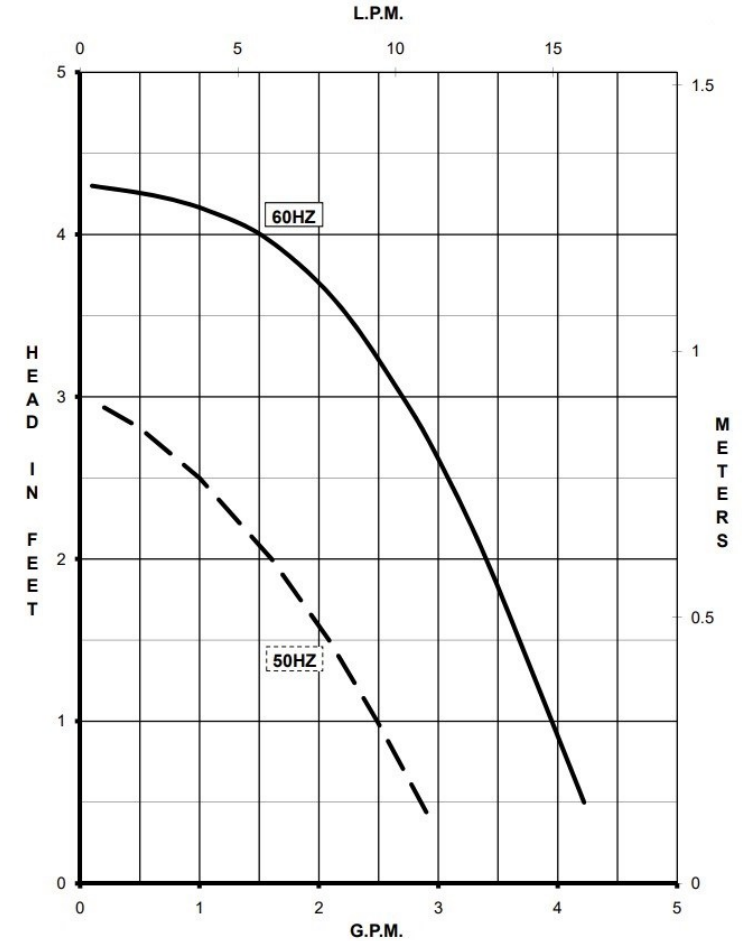
809 Slow Speed Inline AC

DESCRIPTION & OPERATION: 809 Series hot water booster centrifugal magnetic drive pumps are built to handle liquid transfer in heating and cooling operations. Contact the factory for application assistance. Pumps are not self-priming, lack a suction lift, and thus require a flooded suction. Pumps cannot be run dry.

INSTALLATIONS: Pumps should be installed with the pump housing arrow pointing in the direction of flow within the system. If the arrow indicating flow is not in the direction required, remove the housing screws holding the housing to the motor bracket and rotate the housing assembly as required. Replace the screws and tighten. The pump is composed of a wet end assembly which can be separated by unscrewing the housing screws. The pump will then separate into 2 parts. The liquid will be contained within the wet end assembly unless the rear housing screws on the rear housing are loosened.

GENERAL SAFETY INFORMATION: Follow all local safety codes & the Occupational Safety and Health Act (OSHA). Make certain that the power source conforms to the requirements of your equipment. Always disconnect power source before performing any work on or near the electric motor. Caution must be exercised to relieve any pressure in the system & in draining hot water from the pump or the system.

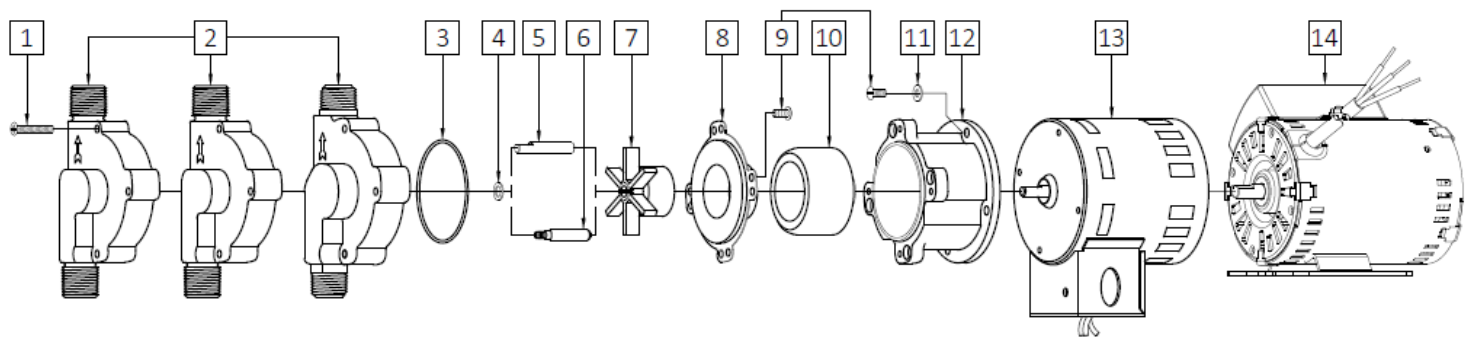
ELECTRICAL: Motors are available in different electrical configurations such as 115 Volt 50/60 Hz, 115V 50/60 Hz or 230 Volt 50/60 Hz, 1 Phase. The motors are U.L. listed and rated for continuous duty. The 115V motor has a conduit box and the 230V motor has a 3' cord.



| Specifications | | 809-BR | 809-PL | 809-SS |
|------------------------|------|-------------------|-------------------|-------------------|
| Product | 115V | 0809-0064-0100 | 0809-0064-0300 | 0809-0215-0500 |
| | 230V | 0809-0274-0200 | 0809-0273-0200 | 0809-0272-0200 |
| Inlet-Outlet | | 1/2" MPT-1/2" MPT | 1/2" MPT-1/2" MPT | 1/2" MPT-1/2" MPT |
| Max Internal Pressure | | 150PSI (1034 kPa) | 50PSI (344 kPa) | 150PSI (1034 kPa) |
| Max Liquid Temperature | | 250F (121C) | 250F (121C) | 250F (121C) |

| Model | 60Hz | | | | | | | | | | 50Hz | | | | | | | | | |
|--------|----------|------|----------|------|-----|------------|------------|------------|--------------|----------------|----------|------|----------|-----|------|------------|------------|------------|--------------|----------------|
| | Max Flow | | Max Head | | | Electrical | | | | | Max Flow | | Max Head | | | Electrical | | | | |
| | GPM | LPM | FT | PSI | M | Ph | V | A | HP | kW | GPM | LPM | Feet | PSI | M | Ph | V | A | HP | kW |
| 809-BR | 4.3 | 16.3 | 4.3 | 1.86 | 1.3 | 1 | 115 or 230 | 0.5 or 0.3 | 0.01 or 0.04 | 0.007 or 0.029 | 2.72 | 10.3 | 3.02 | 1.3 | 0.92 | 1 | 115 or 230 | 0.6 or 0.3 | 0.01 or 0.04 | 0.007 or 0.029 |
| 809-PL | 4.3 | 16.3 | 4.3 | 1.86 | 1.3 | 1 | 115 or 230 | 0.5 or 0.3 | 0.01 or 0.04 | 0.007 or 0.029 | 2.72 | 10.3 | 3.02 | 1.3 | 0.92 | 1 | 115 or 230 | 0.6 or 0.3 | 0.01 or 0.04 | 0.007 or 0.029 |
| 809-SS | 4.3 | 16.3 | 4.3 | 1.86 | 1.3 | 1 | 115 or 230 | 0.5 or 0.3 | 0.01 or 0.04 | 0.007 or 0.029 | 2.72 | 10.3 | 3.02 | 1.3 | 0.92 | 1 | 115 or 230 | 0.6 or 0.3 | 0.01 or 0.04 | 0.007 or 0.029 |

All specifications & data are based on pumping water & are intended as a guideline only. Specifications may vary with different motors.



| 809-BR | | | | 809-PL | | | |
|--------|----------------|---------|--|--|----------------|---------|--|
| Item | Part Number | QTY REQ | Description | Item | Part Number | QTY REQ | Description |
| 1 | 0923-0003-1000 | 4 | #8-32 x 1 Lg. Screw (Steel) | 1 | 0923-0003-1000 | 4 | #8-32 x 1 Lg. Screw (Steel) |
| 2 | 0809-0013-0000 | 1 | Pump Housing (Bronze) | 2 | 0809-0079-0100 | 1 | Pump Housing (Polysulfone) |
| 3 | 0809-0165-1000 | 1 | 0.070 CS x 2.441 ID O-Ring (Silicone) | 3 | 0809-0027-1000 | 1 | 1/16 CS x 2-3/8 ID O-Ring (Silicone) |
| 4 | 0809-0043-1000 | 1 | Thrust Washer (Teflon) | 4 | 0809-0043-1000 | 1 | Thrust Washer (Teflon) |
| 6 | 0809-0214-1000 | 1 | Left-Hand Thread (Stainless Steel) | 5 | 0809-0161-1000 | 1 | "D" Flat Shaft (Stainless Steel) |
| 7A | 0809-0005-0100 | 1 | 2" Impeller (Ryton/Teflon/Glass) for 115V | 7A | 0809-0005-0100 | 1 | 2" Impeller (Ryton/Teflon/Glass) for 115V |
| 7B | 0809-0271-0000 | | 1.25" Impeller (Ryton/Teflon/Glass) for 230V | 7B | 0809-0271-0000 | | 1.25" Impeller (Ryton/Teflon/Glass) for 230V |
| 8 | 0809-0012-1000 | 1 | Rear Housing (Stainless) | 8 | 0809-0012-1000 | 1 | Rear Housing (Stainless) |
| 9 | 0135-0040-1000 | 8 | #8-32 x 3/8Lg. Screw (Stainless) | 9 | 0135-0040-1000 | 8 | #8-32 x 3/8Lg. Screw (Stainless) |
| 10 | 0125-0083-0100 | 1 | Drive Magnet | 10 | 0125-0083-0100 | 1 | Drive Magnet |
| 11 | 0858-0004-1000 | 4 | #8 Washer (Stainless) | 11 | 0858-0004-1000 | 4 | #8 Washer (Stainless) |
| 12 | 0809-0058-1000 | 1 | Motor Bracket (Plastic) | 12 | 0809-0058-1000 | 1 | Motor Bracket (Plastic) |
| 13 | 0809-0064-1000 | 1 | Motor 115V, 50/60Hz | 13 | 0809-0064-1000 | 1 | Motor 115V, 50/60Hz |
| 14 | 0809-0124-1000 | 1 | Motor 230V, 50/60Hz | 14 | 0809-0124-1000 | 1 | Motor 230V, 50/60Hz |
| 809-SS | | | | <p>LUBRICATION: The 115V motor should be oiled at least once a year at the start of the heating season with 4 or 5 drops of SAE 20 weight non-detergent oil in each bearing. If the pump is used daily, it should be oiled every six months. Do not over oil.</p> <p>DISASSEMBLY & REASSEMBLY: The motor can be removed from the wet end assembly without draining the liquid from the system. To do so remove four housing screws and slide the motor assembly away. If parts inside the wet end assembly must be removed, isolate the pump or drain the system. When the system is drained and cool, remove the four screws from the rear of the housing. The rear housing can now be removed. Remaining pump parts can be removed. Replace any worn or damaged parts. Replace the O-ring anytime the rear housing is removed.</p> <p>Materials in contact with the liquid:</p> <p>809-BR: Bronze, Stainless Steel, Ryton/Teflon/Carbon, Silicone, Teflon</p> <p>809-PL: Polysulfone, Stainless Steel, Ryton/Teflon/Carbon, Silicone, Teflon</p> <p>809-SS: Stainless Steel, Ryton/Teflon/Carbon, Silicone, Teflon</p> | | | |
| 1 | 0809-0205-1000 | 4 | #8-32 x 1 Lg. Screw (Stainless) | | | | |
| 2 | 0809-0211-0010 | 1 | Pump Housing (Stainless Steel) | | | | |
| 3 | 0809-0165-1000 | 1 | 0.070 CS x 2.441 ID O-Ring (Silicone) | | | | |
| 4 | 0809-0043-1000 | 1 | Thrust Washer (Teflon) | | | | |
| 6 | 0809-0214-1000 | 1 | Left-Hand Thread (Stainless Steel) | | | | |
| 7A | 0809-0005-0100 | 1 | 2" Impeller (Ryton/Teflon/Glass) for 115V | | | | |
| 7B | 0809-0271-0000 | | 1.25" Impeller (Ryton/Teflon/Glass) for 230V | | | | |
| 8 | 0809-0012-1000 | 1 | Rear Housing (Stainless) | | | | |
| 9 | 0135-0040-1000 | 8 | #8-32 x 3/8Lg. Screw (Stainless) | | | | |
| 10 | 0125-0083-0100 | 1 | Drive Magnet | | | | |
| 11 | 0858-0004-1000 | 4 | #8 Washer (Stainless) | | | | |
| 12 | 0809-0058-1000 | 1 | Motor Bracket (Plastic) | | | | |
| 13 | 0809-0064-1000 | 1 | Motor 115V, 50/60Hz | | | | |
| 14 | 0809-0124-1000 | 1 | Motor 230V, 50/60Hz | | | | |

NOTE: Contact Factory for other materials and/or parts not listed.

Special voltage motors are available upon special order.

WARRANTY: <https://www.marchpump.com/about/warranty/>

For the General Installation Manual, see this link <https://www.marchpump.com/wp-content/uploads/2019/07/march-pump-general-installation-guide-0750-040.pdf>
Or Scan QR Code

