



MARCH PUMPS

1819 PICKWICK AVE., GLENVIEW, IL 60026-1306, U.S.A

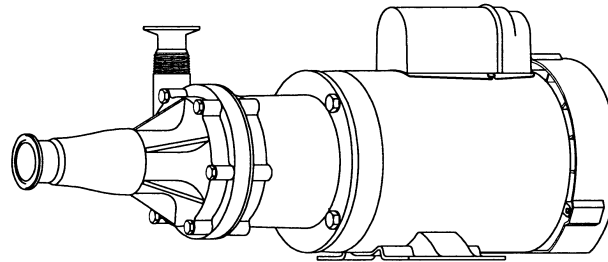
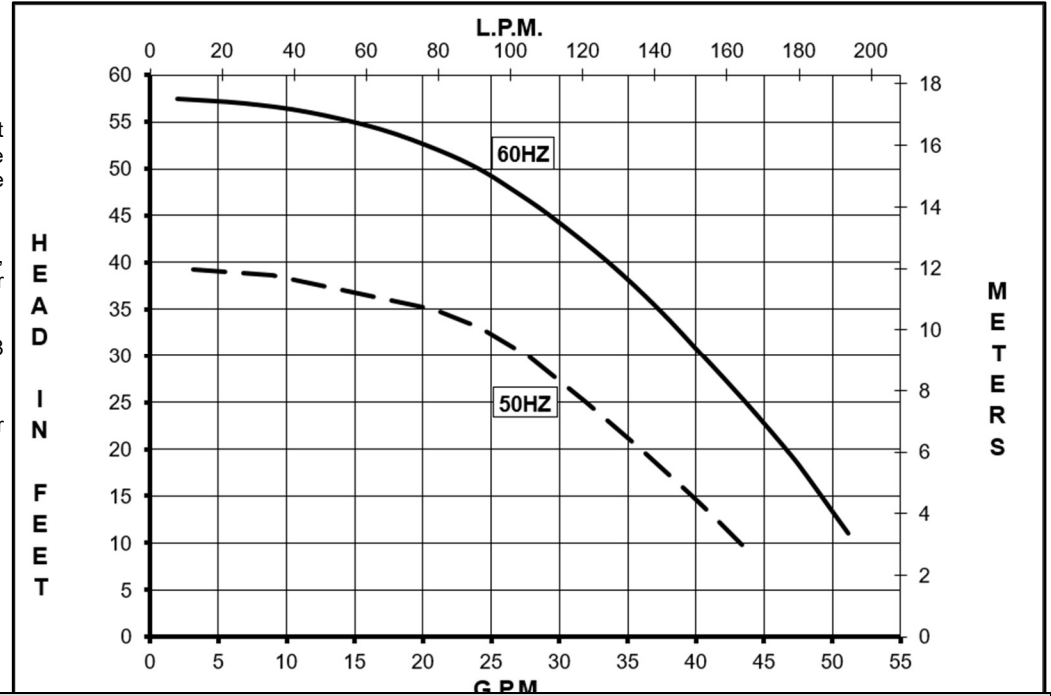
TE-7SSB-MD w/ 1-1/2 x 1 SANITARY FITTINGS

DESCRIPTION: The March beer pump TE-7SSB-MD is a non-self-priming magnetic drive unit specifically to handle hot wort and water. The unit requires liquid being pumped to lubricate the internal parts. If the pump is run dry for a period of time the impeller and shaft may become damaged. To regulate the flow use a valve on the discharge/outlet.

ELECTRICAL: 1 phase 115/230 Volt, 60 Hz, 110/220 Volt, 50 Hz. 3 phase 230/460 Volt, 60 Hz, 190/380 Volt, 50 Hz. Motors are totally enclosed fan cooled and are U.L. listed as well as rated for continuous operation. All motors have a conduit box for electrical connections.

NOTE: When attaching drive magnet to the motor shaft, position the face of the drive magnet 1/8 inch below the face of the motor bracket.

LIMITED WARRANTY: March pumps are guaranteed only against defects in workmanship or materials for a period of one year from date of manufacture pumping water.



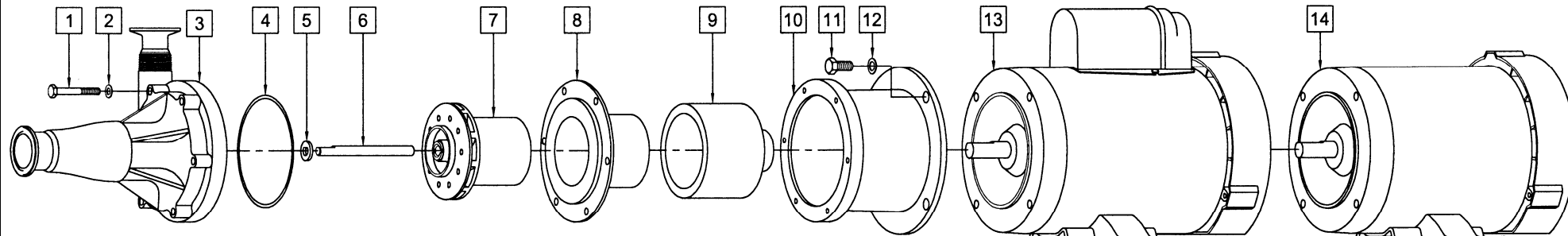
SPECIFICATIONS

Product #	1 Phase	0155-0249-0300
	3 Phase	0155-0249-0400
Inlet - Outlet	1-1/2" Tri-Clamp - 1-1/2" Tri-Clamp	
Max Internal Pressure	200 psi (1378 kPa)	
Max Liquid Temperature	225 °F (107 °C)	

MODEL	60 Hz											50 Hz											Height		Width		Length		Packed Weight	
	Max Flow		Max Head			ELECTRICAL						Max Flow		Max Head			ELECTRICAL						Inches	cm	Inches	cm	Inches	cm	lbs	kg
	gpm	lpm	ft	psi	m	Ph	V	A	Hp	kW	Rpm	gpm	lpm	ft	psi	m	Ph	V	A	Hp	kW	Rpm								
TE-7SSB-MD	53	201	57.5	24.9	17.5	1	115	12.6	1.00	0.75	3450	47	180	39.36	17.1	12.0	1	110	14.3	1.00	0.75	2850	8.25	20.9	9.10	23.1	22.72	57.7	46.5	21.0
							230	6.2										220	7.1											
	53	201	57.5	24.9	17.5	3	230	3.0	1.00	0.75	3450	47	180	39.36	17.1	12.0	3	190	3.3	1.00	0.75	2850	8.25	20.9	9.69	24.6	21.32	54.1	42	19.0
							460	1.5										380	1.6											

All specifications/values are based on pumping water with 1-1/2" pipe suction and 1" pipe discharge and are intended as a guideline only. Values may vary with different motors.

PARTS LIST



#	DESCRIPTION	MATERIAL	SIZE (Inches)	QTY.	PART #
1	Screw	Stainless	1/4-20 x 2 Lg.	6	0155-0014-1000
2	Washer	Stainless	1/4 ID x 1/2 OD	6	0155-0019-1000
3	Front Housing	316 Stainless		1	0155-0253-0100
4	"O" Ring	Ethylene Propylene	1/8 CS x 4-3/8 OD	1	0155-0105-1100
5	Thrust Washer	Ceramic		1	0155-0009-1000
6	Shaft	316 Stainless	4.257 Lg.	1	0155-0081-1000
7	Impeller w/Carbon Bushing	Kynar/Glass		1	0155-0160-0200
8	Rear Housing	316 Stainless		1	0155-0035-0010
9	Drive Magnet			1	0155-0130-0200
10	Motor Bracket	Aluminum		1	1095-0015-0010
11	Screw	Stainless	3/8-16 x 3/4 Lg.	4	0155-0017-1000
12	Washer	Stainless	3/8 ID x 5/8 OD	4	0155-0019-1000
13	Motor, TEFC, 1 HP, 1 Phase, 115/230 V, 50/60 Hz			1	0155-0173-1000
14	Motor, TEFC, 1 HP, 3 Phase, 230/460 V, 50/60 Hz			1	0155-0174-1000

Materials in Contact with Solution:

316 Stainless Steel, EPDM, Ceramic, Mica Teflon

NOTE: Contact Factory for other materials and/or parts not listed.

Explosion proof & special voltage motors are available upon special order.

0155-0046-1200