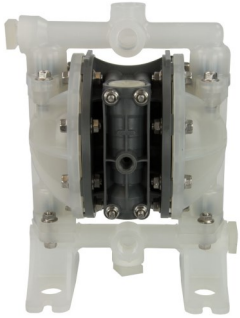
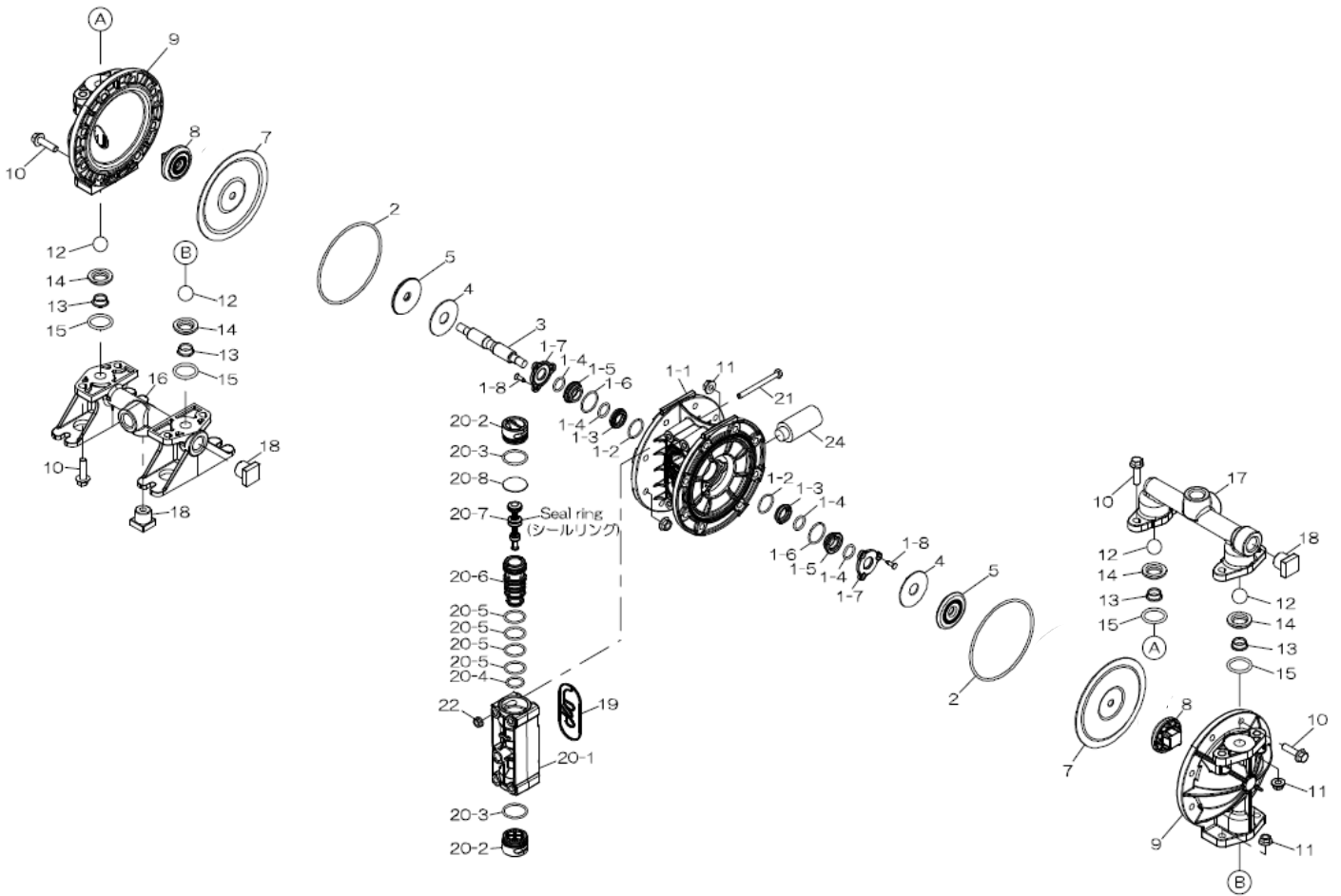


Air Operated Double Diaphragm Pump



Trial Program



Air Operated Double Diaphragm Pump

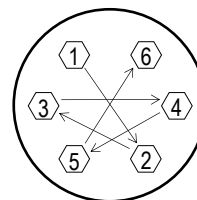
REF. NO.	PART NO.	PART NO.	PART NO.	DESCRIPTION	QTY.	REORDER
	G15PH	G15PN	G15PS			
	854979	854981	854917			
1	805217	805217	805217	BODY ASSY NPT	1	
1-1	773410	773410	773410	BODY NPT	1	
1-2	686893	686893	686893	O RING	2	
1-3	773385	773385	773385	GUIDE BUSH A (G15)	2	
1-4	640015	640015	640015	O RING	4	
1-5	780301	780301	780301	GUIDE BUSH B (G15)	2	
1-6	684900	684900	684900	O-RING	2	
1-7	773384	773384	773384	GUIDE BUSH STOPPER G15	2	
1-8	686894	686894	686894	TAPPING SCREW	6	
2	640147	640147	640147	O RING	2	
3	717100	717100	717100	CENTER ROD (G15) SUS	1	
4	773278	773278	773278	CUSHION	2	
5	716923	716923	716923	CENTER DISK INNER	2	
7	773316	773277	773315	DIAPHRAGM G15	2	
8	773391	773391	773391	CENTER DISK OUTER	2	
9	780303	780303	780303	OUT CHAMBER	2	
10	686892	686892	686892	BOLT W/FLANGE	24	
11	686032	686032	686032	NUT W/FLANGE	24	
12	773374	771525	773424	BALL G15	4	
13	773430	773430	773430	SEAT B	4	
14	773429	773429	773429	SEAT A	4	
15	640025	640025	684114	O RING	4	
16	780307	780307	780307	INLET MANIFOLD B NPT	1	
17	773395	773395	773395	OUTLET MANIFOLD A NPT	1	
18	773393	773393	773393	PLUG (G15) NPT	3	
19	773407	773407	773407	GASKET (G15)	1	
20	805210	805210	805210	VALVE BODY ASSY(G15)	1	
20- 1	833226	780300	780300	VALVE BODY (G15) NPT	1	
20- 2	773383	773383	773383	CAP (G15)	2	
20- 3	683112	683112	683112	O RING	2	
20- 4	685453	685453	685453	O RING	1	
20- 5	685276	685276	685276	O RING	4	
20- 6	780302	780302	780302	SLEEVE (G15)	1	
20- 7	805208	805208	805208	SPOOL ASSY (G15)	1	
20- 8	773428	773428	773428	CUSHION (G15)	1	
21	621115	621115	621115	BOLT (SUS304)	4	
22	684086	684086	684086	FLANGE NUT SERRATED	4	
24	686762	686762	686762	SILENCER NPT3/8	1	
KIT	KG15-PH	KG15-PN	KG15-PS	LIQUID END		
KIT		KG15-AM-P		AIR MOTOR		

General Tools:

- Socket wrench - 10mm, 12mm
- Hexagonal box wrenches - 5mm
- Open-end wrench - 12mm, 22mm
- Phillips head screw driver
- Snap ring pliers
- Sleeve remover (713148) (sold separately)

Miscellaneous:

- Assembly Oil—turbine oil none additional class 1 (equivalent to ISA VG32 grade)
- Urea grease grade (NLGI) No. 2
- Thread locking agent (equivalent to LOCTITE® 243)



Tightening torque for center rod and out chambers.

Center Rod 177 in-lbf {20 N-m}  
Out Chambers 89 in-lbf {10 N-m}

Tightening torque for manifold retainer bolts.

G15P[x] 89 in-lbf {10 N-m}

Customer Notes

Model #: \_\_\_\_\_  
 Description: \_\_\_\_\_  
 Serial #: \_\_\_\_\_  
 Date Installed: \_\_\_\_\_  
 Department Location: \_\_\_\_\_  
 Tag/Project: \_\_\_\_\_