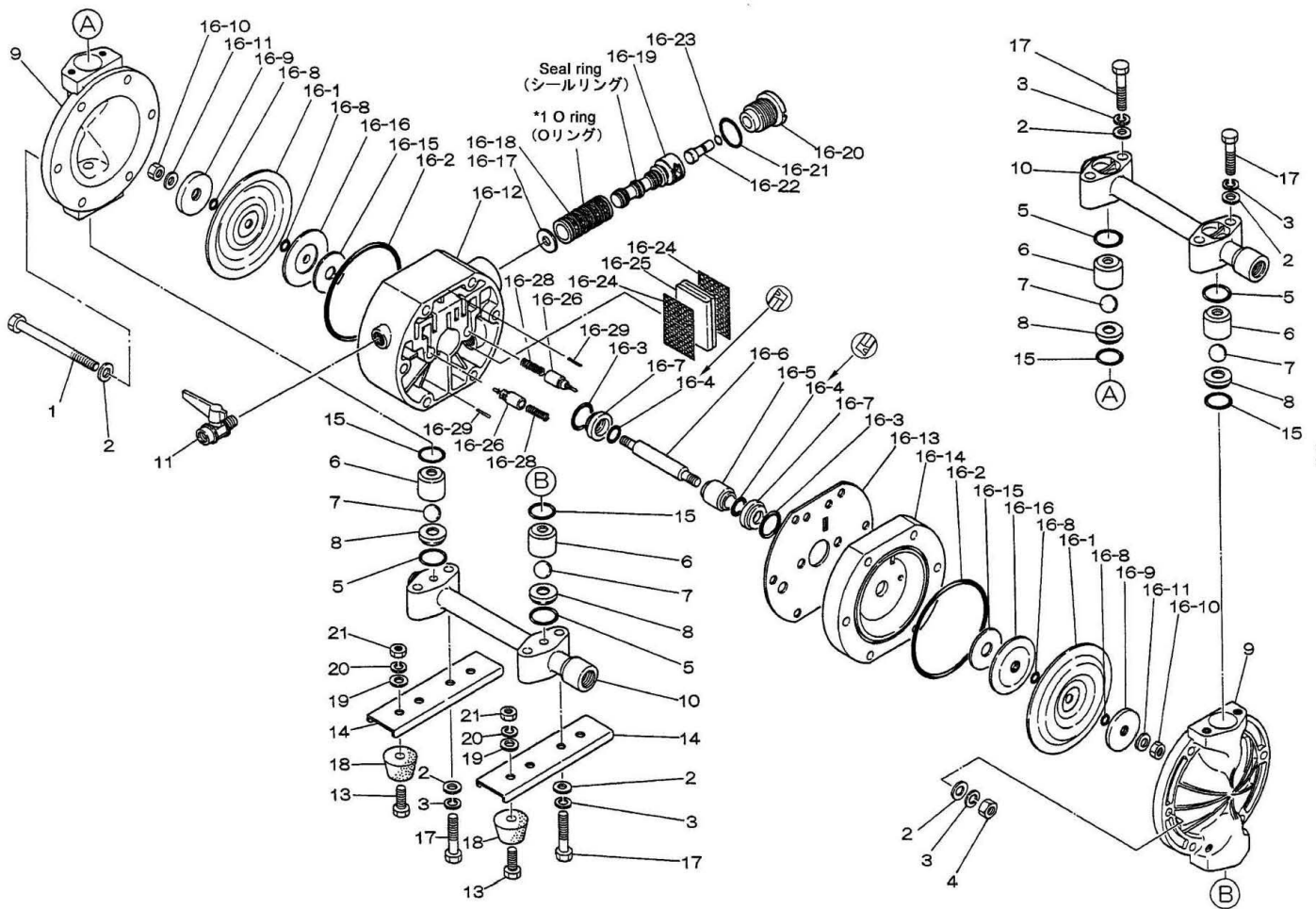


EXPLODED VIEW & PARTS LISTING

Model: NDP-15BS (BALL)
Stainless Steel Series



Air Operated Double Diaphragm Pump



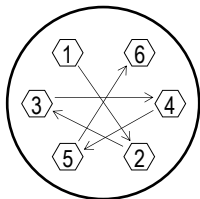
Air Operated Double Diaphragm Pump

NDP-15BSC NDP-15BSN NDP-15BSH NDP-15BSS NDP-15BSV NDP-15BST

NPT	851962	851963	851964	852686	*NS	851961	** NPT PUMPS **		
REF. No.	PARTS No.	PARTS No.	PARTS No.	PARTS No.	PARTS No.	PARTS No.	DESCRIPTION	QTY.	REORDER
1	683224	683224	683224	683224	683224	683224	BOLT	6	
2	631329	631329	631329	631329	631329	631329	PLAIN WASHER	20	
3	681300	681300	681300	681300	681300	681300	SPRING LOCK WASHER	14	
4	628012	628012	628012	628012	628012	628012	NUT	6	
5	640025	640025	640025	684114	643025	643025	O-RING	4	
6	711502	711502	711502	711502	711502	711502	VALVE STOPPER	4	
7	771526	771525	773125	773169	771524-VT	771524	BALL	4	
8	711382	711382	711382	711382	711382	711382	VALVE SEAT	4	
9	711380	711380	711380	711380	711380	711380	OUT CHAMBER	2	
10	711506	711506	711506	711506	711506	711506	MANIFOLD	2	
11	686826	686826	686826	686826	686826	686826	BALL VALVE	1	
13	621102	621102	621102	621102	621102	621102	BOLT	4	
14	717185	717185	717185	717185	717185	717185	BASE	2	
15	640130	640130	640130	684113	643130	643130	O-RING	4	
16-1	770971	770973	771372	771972	770971-V	770933	DIAPHRAGM	2	
16-2	640144	640144	640144	640144	640144	640144	O-RING	2	
16-3	640020	640020	640020	640020	640020	640020	O-RING	2	
16-4	684284	684284	684284	684284	684284	684284	PACKING	2	
16-5	771337	771337	771337	771337	771337	771337	GUIDE	1	
16-6	710578	710578	710578	710578	710578	710578	CENTER ROD	1	
16-7	771336	771336	771336	771336	771336	771336	BUSHING	2	
16-8	640005	640005	-	-	642005	643005	O-RING	4	
16-9	708506	708506	708506	708506	708506	708506	CENTER DISK (OUTER)	2	
16-10	681849	681849	681849	681849	681849	681849	NUT	2	
16-11	684916	684916	684916	684916	684916	684916	CONED DISK SPRING	2	
16-12	780029	780029	780029	780029	780029	780029	BODY A	1	
16-13	771347	771347	771347	771347	771347	771347	GASKET	1	
16-14	780030	780030	780030	780030	780030	780030	BODY B	1	
16-15	771342	771342	771342	771342	771342	771342	CUSHION	2	
16-16	771344	771344	771344	771344	771344	771344	CENTER DISK (INNER)	2	
16-17	771483	771483	771483	771483	771483	771483	CUSHION	1	
16-18	804249	804249	804249	804249	804249	804249	SLEEVE ASSEMBLY	1	
16-18*1	683123	683123	683123	683123	683123	683123	O-RING (SLEEVE O.D.)	6	
16-19	802835	802835	802835	802835	802835	802835	C-SPOOL VALVE ASSY.	1	
16-19 seal	771484	771484	771484	771484	771484	771484	SEAL RING	5	
16-20	771695	771695	771695	771695	771695	771695	CAP	1	
16-21	640022	640022	640022	640022	640022	640022	O-RING	1	
16-22	771350	771350	771350	771350	771350	771350	RESET BUTTON	1	
16-23	640002	640002	640002	640002	640002	640002	O-RING	1	
16-24	771589	771589	771589	771589	771589	771589	MESH	2	
16-25	771465	771465	771465	771465	771465	771465	SILENCER	1	
16-26	832141	832141	832141	832141	832141	832141	PILOT VALVE ASSY.	2	
16-28	710577	710577	710577	710577	710577	710577	SPRING	2	
16-29	632752	632752	632752	632752	632752	632752	SPRING PIN	2	
17	621155	621155	621155	621155	621155	621155	BOLT	8	
18	771123	771123	771123	771123	771123	771123	CUSHION	4	
19	631328	631328	631328	631328	631328	631328	PLAIN WASHER	4	
20	681855	681855	681855	681855	681855	681855	SPRING LOCK WASHER	4	
21	628010	628010	628010	628010	628010	628010	NUT	4	
KIT	K15-MC	K15-MN	K15-MH	K15-MS	K15-MV	K15-MT	Liquid Side Kit		
KIT	K15-AM						Air Motor Kit		

*NS - Non-Stock Pump

Air Operated Double Diaphragm Pump



Tightening torque for center rod and out chambers.

Center Rod	122 in-lbf {14 N-m}
Out Chambers	105 in-lbf {12 N-m}

Tightening torque for manifold retainer bolts or nuts.

BSC/H/N/V/S/T	105 in-lbf {12 N-m}
---------------	---------------------

General Tools:

- Socket wrench - 13mm
- Open-end wrenches - 13mm, 21mm
- Plier

Special Tools (sold separately):

- Sleeve remover (713148)
- Cap & disk remover (771132)

Miscellaneous:

- Assembly Oil - turbine oil none additional class 1 (equivalent to ISO VG32 grade)
- Nuts - M8 x 1.25
- Urea grease grade (NLGI) No. 2

Customer Notes

Model #: _____
 Description: _____
 Serial #: _____
 Date Installed: _____
 Department Location: _____
 Tag/Project: _____