

BALDOR® • ***RELIANCE***

Product Information Packet

CESSWDM3559T-5

3HP,3470RPM,3PH,60HZ,145TC,3546M,TEFC,F1

| Part Detail | | | | | | | |
|-------------|-------|----------------|-------|-------------|----------|---------------|------------|
| Revision: | J | Status: | PRD/A | Change #: | | Proprietary: | No |
| Type: | AC | Prod. Type: | 3546M | Elec. Spec: | 35WGN653 | CD Diagram: | CD0006 |
| Enclosure: | TEFC | Mfg Plant: | | Mech. Spec: | 35VV818 | Layout: | 35LYVV818 |
| Frame: | 145TC | Mounting: | F1 | Poles: | 02 | Created Date: | 02-07-2013 |
| Base: | RG | Rotation: | R | Insulation: | F | Eff. Date: | 03-28-2016 |
| Leads: | 3#18 | | | | | Replaced By: | |
| Literature: | | Elec. Diagram: | | | | | |

| | | | | | | | | | | |
|----------------------------|----------------|--|-------------|------------|-----------------------|----|--|--------------|-----------|---|
| Nameplate NP1951A05 | | | | | | | | | | |
| CAT.NO. | CESSWDM3559T-5 | | | | | | | | | |
| SPEC. | 35VV818N653G1 | | | | | | | | | |
| HP | 3 | | | | | | | | | |
| VOLTS | 575 | | | | | | | | | |
| AMP | 2.9 | | | | | | | | | |
| RPM | 3470 | | | | | | | | | |
| FRAME | 145TC | | | | HZ | 60 | | | PH | 3 |
| SER.F. | 1.15 | | CODE | P | DES | A | | CLASS | F | |
| NEMA-NOM-EFF | 86.5 | | | PF | 91 | | | | | |
| RATING | 40C AMB-CONT | | | | | | | | | |
| CC | 010A | | | | USABLE AT 208V | | | | | |
| DE | 6205 | | | ODE | 6203 | | | | | |
| ENCL | TEFC | | SN | | | | | | | |
| | | | | | | | | | | |
| | | | | | | | | | | |
| | | | | | | | | | | |

| Parts List | | |
|---------------|------------------------------------------|----------|
| Part Number | Description | Quantity |
| SA258172 | SA 35VV818N653G1 | 1.000 EA |
| RA244948 | RA 35VV818N653G1 | 1.000 EA |
| 34FN3002A01SP | EXTERNAL FAN, PLASTIC, .637/.639 HUB W/ | 1.000 EA |
| NS2512A01 | INSULATOR, CONDUIT BOX X | 1.000 EA |
| 35CB1004A09 | 35 CB .75 N.P.T @ 6:00 | 1.000 EA |
| 35GS1041 | 35 MOLDED GASKET W/LIP, 1.12 LEAD HOLE, | 1.000 EA |
| 51XN1032A07 | 10-32 X 0.438 HX WS SL SR ZN | 2.000 EA |
| HA5027A02 | HA4054 T-DRAIN X2 BAGGED WITH LABEL | 1.000 EA |
| 35CB4515 | 35 CB LID #304 STAINLESS STEEL | 1.000 EA |
| 36GS3008SP | WHITE NEOPREME KO BOX LID GASKET | 1.000 EA |
| 59XN0832S07 | 8/32 X 7/16 HX WS HD SER X | 4.000 EA |
| 11XW1032G06 | 10-32 X .38, TAPTITE II, HEX WSHR SLTD U | 1.000 EA |
| 35EP1913A02 | FR EP MADE FROM 35EP1913A01 | 1.000 EA |
| HW4500A33 | 1/8 NPT STAINLESS,HOLO-KROME #13002,PRES | 3.000 EA |
| HW4606A01 | JM CLIPPER/SEAL (WDE-0667-1064-BH49) | 1.000 EA |
| HW5100A03SP | WAVY WASHER (W1543-017) | 1.000 EA |
| 12XN1032S22 | 10-32 X 1 3/8 SLOT HEX, STAINLESS STEEL | 2.000 EA |
| HA1049A01 | DUBO LOK WASHER SIZE 10 (NYLON LOCK SEAL | 2.000 EA |
| 35EP1914A02 | PU EP FOR LOCKED 6205 BRG | 1.000 EA |
| HW4500A33 | 1/8 NPT STAINLESS,HOLO-KROME #13002,PRES | 3.000 EA |
| HW4606A02 | JM CLIPPER/SEAL (LWE-0938-1624-AL23) | 1.000 EA |
| HW4500A33 | 1/8 NPT STAINLESS,HOLO-KROME #13002,PRES | 3.000 EA |
| HA1049A01 | DUBO LOK WASHER SIZE 10 (NYLON LOCK SEAL | 4.000 EA |
| 35FH4005A39 | IEC FH NO GREASER (#304 SS)CLEAN ONLY | 1.000 EA |

| Parts List (continued) | | |
|-------------------------------|------------------------------------------|-----------------|
| Part Number | Description | Quantity |
| 10XN1032S06 | HEX HD CAP SCREW, SS | 3.000 EA |
| HW2502D13 | SS KEY, 3/16 SQ X 1.375 | 1.000 EA |
| HA7000A01 | KEY RETAINER 7/8" DIA SHAFT | 1.000 EA |
| MJ5001A02 | 732 CL SEALANT 3 OZ DIXIE BEARING 289100 | 0.001 EA |
| MG1500Y02 | PRIMER,347.29+347.29C ACTIVATOR WILKOPON | 0.014 GA |
| HW3001B01 | BRASS CUP WASHER, FOR #8 SCREW | 1.000 EA |
| MJ1000A02 | GREASE, POLYREX EM EXXON (USe 4824-15A) | 0.050 LB |
| HA3100S04 | THRUBOLT- 10-32 X 11.250 302 OR 303 SS | 4.000 EA |
| 36PA1000 | PKG GRP, PRINT PK1016A06 | 1.000 EA |
| MN416A01 | TAG-INSTAL-MAINT no wire (1200/bx) 11/14 | 1.000 EA |

AC Induction Motor Performance Data

Record # 50291 - Typical performance - not guaranteed values

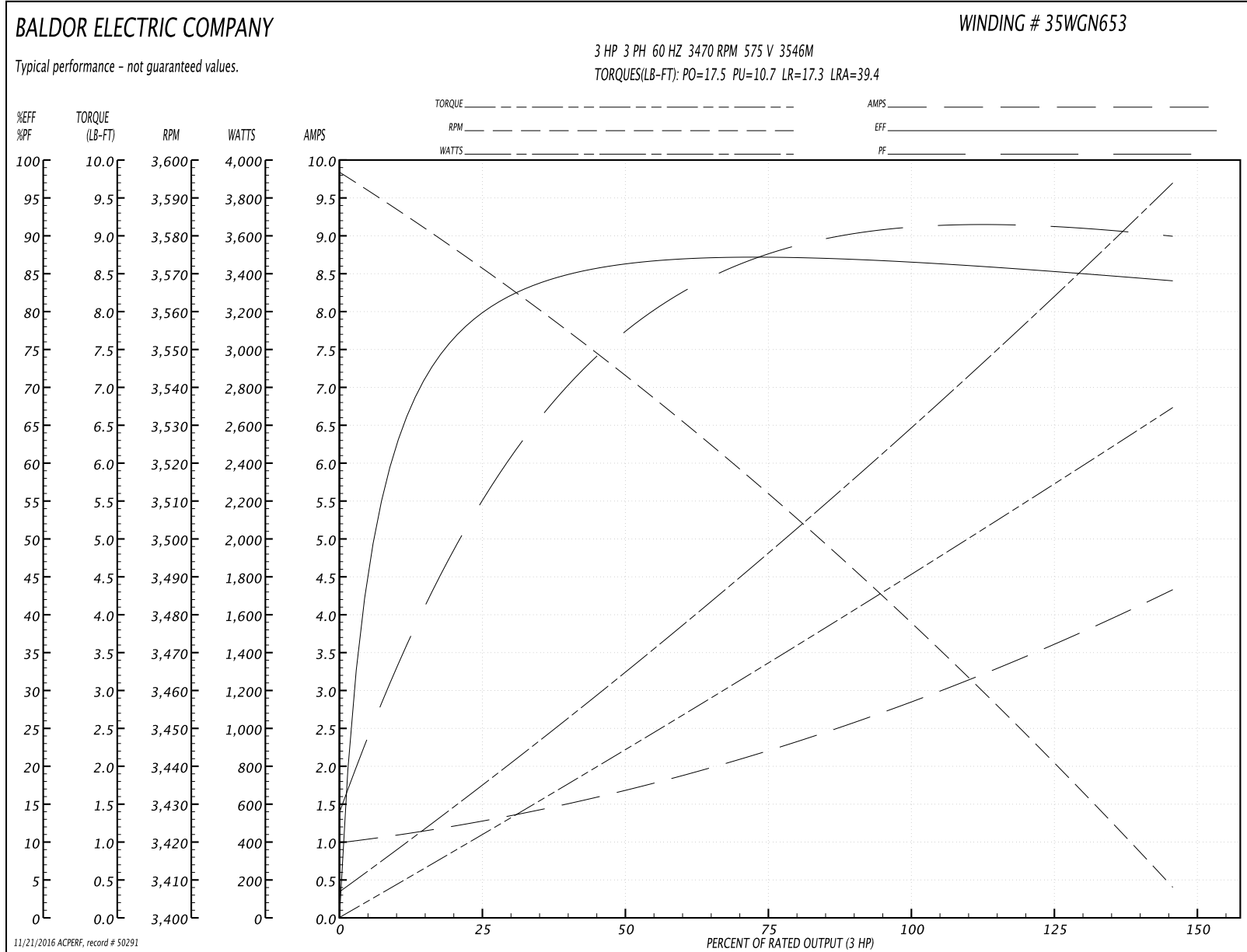
| | | |
|-------------------------------|--------------------|------------------------|
| Winding: 35WGN653-R002 | Type: 3546M | Enclosure: TEFC |
|-------------------------------|--------------------|------------------------|

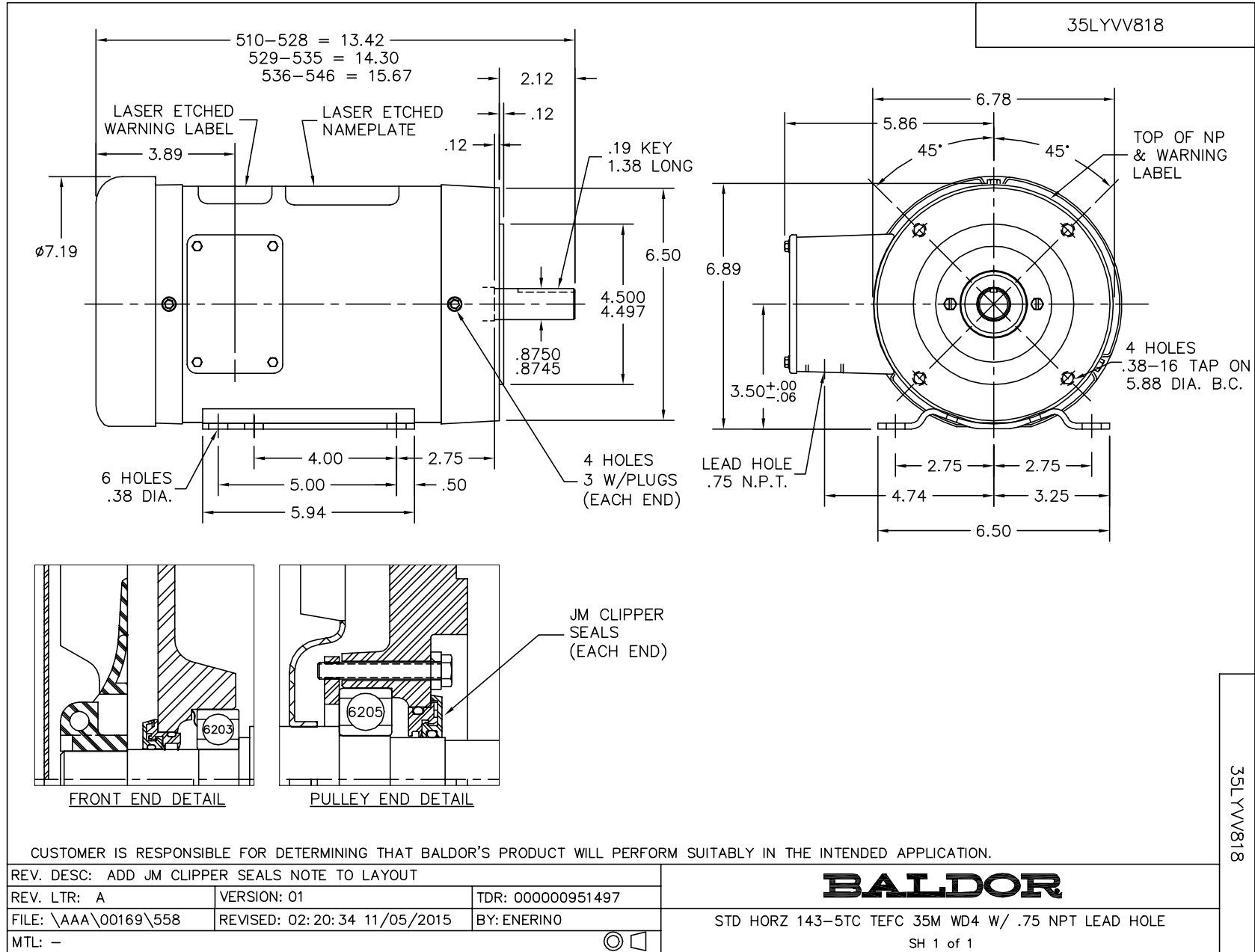
| Nameplate Data | | | | 575 V, 60 Hz: Single Voltage Motor | |
|-----------------------|--------------|--------------|----|---------------------------------------|--------------------------|
| Rated Output (HP) | 3 | | | Full Load Torque | 4.5 LB-FT |
| Volts | 575 | | | Start Configuration | direct on line |
| Full Load Amps | 2.9 | | | Breakdown Torque | 17.5 LB-FT |
| R.P.M. | 3470 | | | Pull-up Torque | 10.7 LB-FT |
| Hz | 60 | Phase | 3 | Locked-rotor Torque | 17.3 LB-FT |
| NEMA Design Code | A | KVA Code | P | Starting Current | 39.4 A |
| Service Factor (S.F.) | 1.15 | | | No-load Current | 1.02 A |
| NEMA Nom. Eff. | 86.5 | Power Factor | 91 | Line-line Res. @ 25°C | 5.41 Ω |
| Rating - Duty | 40C AMB-CONT | | | Temp. Rise @ Rated Load | 63°C |
| S.F. Amps | | | | Temp. Rise @ S.F. Load | 74°C |
| | | | | Locked-rotor Power Factor | 42.7 |
| | | | | Rotor inertia | 0.127 LB-FT ² |

Load Characteristics 575 V, 60 Hz, 3 HP

| % of Rated Load | 25 | 50 | 75 | 100 | 125 | 150 | S.F. |
|-----------------|------|------|------|------|------|------|------|
| Power Factor | 58 | 79 | 87 | 90 | 91 | 90 | 91 |
| Efficiency | 79.3 | 86.2 | 87 | 86.9 | 85.6 | 83.9 | 86.1 |
| Speed | 3568 | 3542 | 3511 | 3481 | 3446 | 3406 | 3460 |
| Line amperes | 1.24 | 1.67 | 2.24 | 2.85 | 3.54 | 4.32 | 3.26 |

Performance Graph at 575V, 60Hz, 3.0HP Typical performance - Not guaranteed values





CD0006



NOTES:

1. THREE LEAD MOTOR MAY BE EITHER WYE CONNECTED OR DELTA CONNECTED.
2. INTERCHANGE ANY TWO LINE LEADS TO REVERSE ROTATION.
3. OPTIONAL THERMOSTATS ARE PROVIDED WHEN SPECIFIED.
4. ACTUAL NUMBER OF INTERNAL PARALLEL CIRCUITS MAY VARY.
5. LEAD COLORS ARE OPTIONAL. LEADS MUST BE NUMBERED AS SHOWN.

| | | | |
|-------------------------------------------|---------|------------------------|--------------|
| REV. DESC: REVISE TO SHOW OPTIONAL COLORS | | | |
| REV. LTR: D | BY: JLP | REVISED: 01/21/99 4:02 | TDR: 0171435 |
| 9000D | | FILE: AAA00005141 | MDL: - |
| | | MTL: - | |

BALDOR ELECTRIC Co.

3PH, SV, 3 LEADS, WYE OR DELTA CONNECTED

CD0006