

BALDOR® • *RELIANCE*

Product Information Packet

CESSWDM3559T

3HP,3470RPM,3PH,60HZ,143TC,3546M,TEFC,F1

Part Detail							
Revision:	U	Status:	PRD/A	Change #:		Proprietary:	No
Type:	AC	Prod. Type:	3546M	Elec. Spec:	35WGR930	CD Diagram:	CD0005
Enclosure:	TEFC	Mfg Plant:		Mech. Spec:	35VV818	Layout:	35LYVV818
Frame:	143TC	Mounting:	F1	Poles:	02	Created Date:	03-04-2010
Base:	RG	Rotation:	R	Insulation:	F	Eff. Date:	10-11-2016
Leads:	9#18					Replaced By:	
Literature:		Elec. Diagram:					

Nameplate NP1953A01										
CAT.NO.	CESSWDM3559T									
SPEC.	35VV818R930G1									
HP	3									
VOLTS	208-230/460									
AMP	7.7-7.4/3.7									
RPM	3470									
FRAME	143TC				HZ	60			PH	3
SER.F.	1.15		CODE	P	DES	A		CLASS	F	
NEMA-NOM-EFF	86.5			PF	91					
RATING	40C AMB-CONT									
CC	010A				USABLE AT 208V			7.7		
DE	6205			ODE	6203					
ENCL	TEFC		SN							

Parts List		
Part Number	Description	Quantity
SA191853	SA 35VV818R930G1	1.000 EA
RA179509	RA 35VV818R930G1	1.000 EA
34FN3002A01SP	EXTERNAL FAN, PLASTIC, .637/.639 HUB W/	1.000 EA
NS2512A01	INSULATOR, CONDUIT BOX X	1.000 EA
35CB1004A09	35 CB .75 N.P.T @ 6:00	1.000 EA
35GS1041	35 MOLDED GASKET W/LIP, 1.12 LEAD HOLE,	1.000 EA
51XN1032A07	10-32 X 0.438 HX WS SL SR ZN	2.000 EA
HA5027A02	HA4054 T-DRAIN X2 BAGGED WITH LABEL	1.000 EA
35CB4515	35 CB LID #304 STAINLESS STEEL	1.000 EA
36GS3008SP	WHITE NEOPREME KO BOX LID GASKET	1.000 EA
59XN0832S07	8/32 X 7/16 HX WS HD SER X	4.000 EA
11XW1032G06	10-32 X .38, TAPTITE II, HEX WSHR SLTD U	1.000 EA
35EP1913A02	FR EP MADE FROM 35EP1913A01	1.000 EA
HW4500A33	1/8 NPT STAINLESS,HOLO-KROME #13002,PRES	3.000 EA
HW4606A01	JM CLIPPER/SEAL (WDE-0667-1064-BH49)	1.000 EA
HW5100A03SP	WAVY WASHER (W1543-017)	1.000 EA
12XN1032S22	10-32 X 1 3/8 SLOT HEX, STAINLESS STEEL	2.000 EA
HA1049A01	DUBO LOK WASHER SIZE 10 (NYLON LOCK SEAL	2.000 EA
35EP1914A02	PU EP FOR LOCKED 6205 BRG	1.000 EA
HW4500A33	1/8 NPT STAINLESS,HOLO-KROME #13002,PRES	3.000 EA
HW4606A02	JM CLIPPER/SEAL (LWE-0938-1624-AL23)	1.000 EA
HW4500A33	1/8 NPT STAINLESS,HOLO-KROME #13002,PRES	3.000 EA
HA1049A01	DUBO LOK WASHER SIZE 10 (NYLON LOCK SEAL	4.000 EA
35FH4005A39	IEC FH NO GREASER (#304 SS)CLEAN ONLY	1.000 EA

Parts List (continued)		
Part Number	Description	Quantity
10XN1032S06	HEX HD CAP SCREW, SS	3.000 EA
HW2502D13	SS KEY, 3/16 SQ X 1.375	1.000 EA
HA7000A01	KEY RETAINER 7/8" DIA SHAFT	1.000 EA
MJ5001A02	732 CL SEALANT 3 OZ DIXIE BEARING 289100	0.001 EA
MG1500Y02	PRIMER,347.29+347.29C ACTIVATOR WILKOPON	0.014 GA
HW3001B01	BRASS CUP WASHER, FOR #8 SCREW	1.000 EA
MJ1000A02	GREASE, POLYREX EM EXXON (USe 4824-15A)	0.050 LB
HA3100S04	THRUBOLT- 10-32 X 11.250 302 OR 303 SS	4.000 EA
36PA1000	PKG GRP, PRINT PK1016A06	1.000 EA
MN416A01	TAG-INSTAL-MAINT no wire (1200/bx) 11/14	1.000 EA

AC Induction Motor Performance Data

Record # 35682 - Typical performance - not guaranteed values

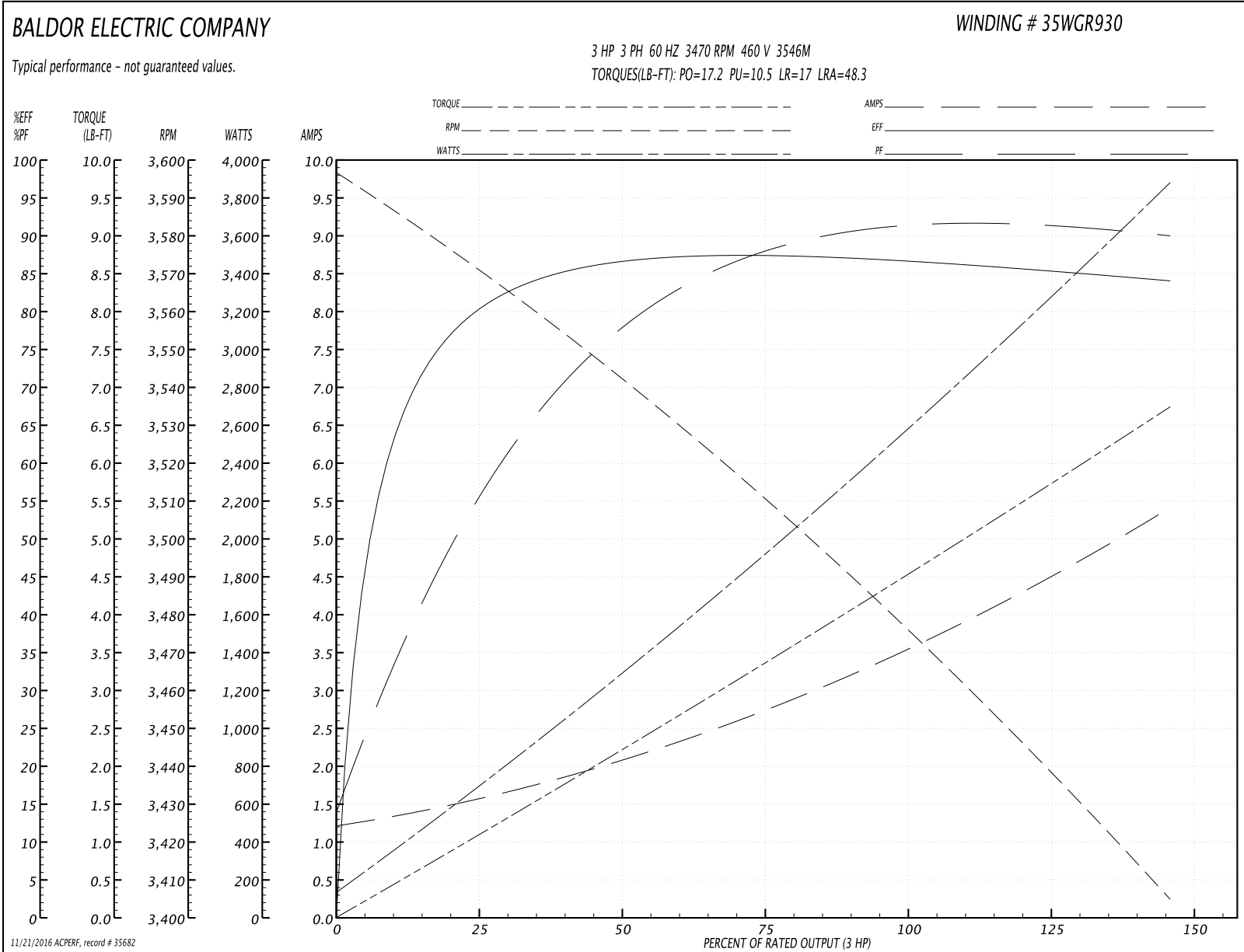
Winding: 35WGR930-R006	Type: 3546M	Enclosure: TEFC
-------------------------------	--------------------	------------------------

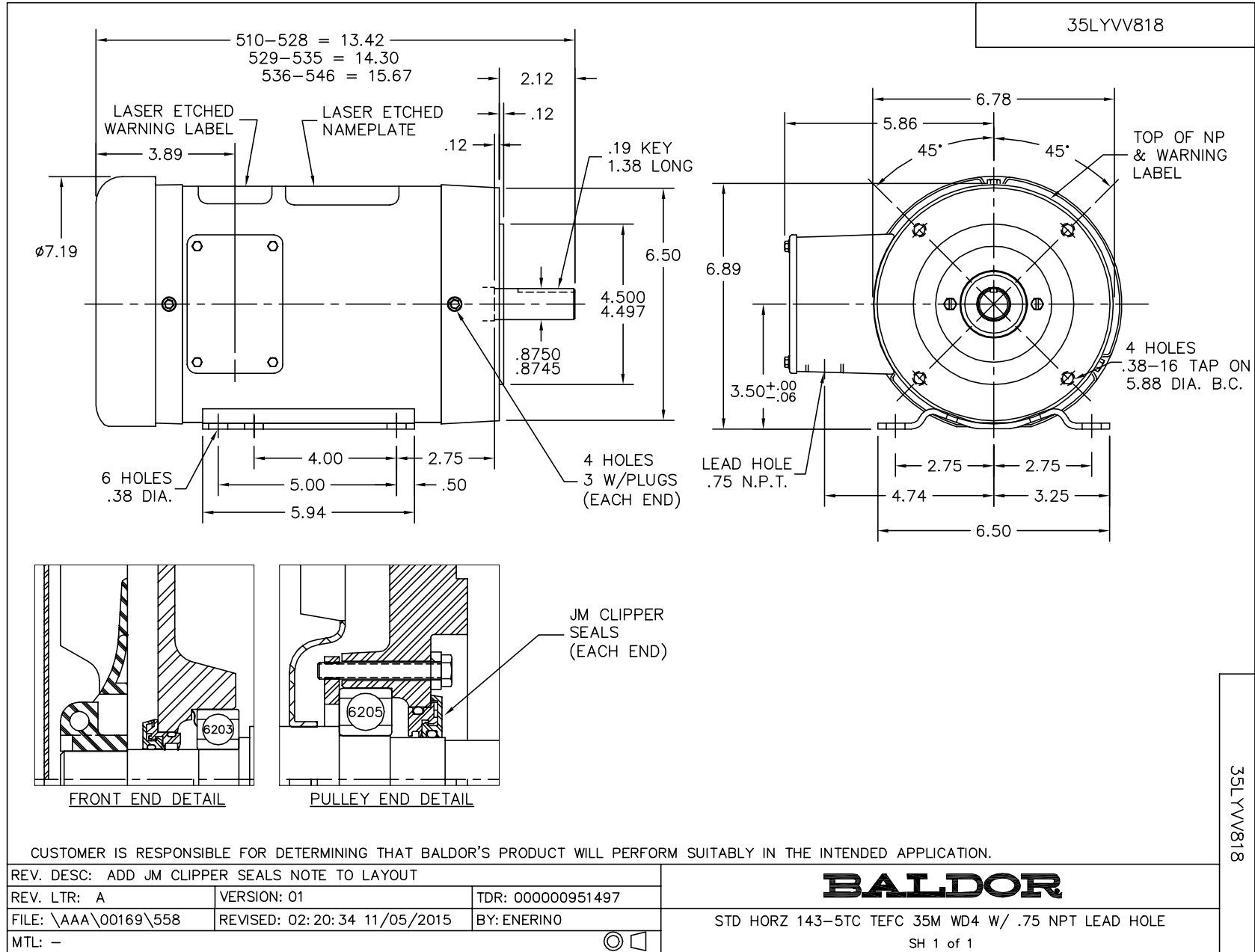
Nameplate Data				460 V, 60 Hz: High Voltage Connection	
Rated Output (HP)	3			Full Load Torque	4.5 LB-FT
Volts	208-230/460			Start Configuration	direct on line
Full Load Amps	7.7-7.4/3.7			Breakdown Torque	17.2 LB-FT
R.P.M.	3470			Pull-up Torque	10.5 LB-FT
Hz	60	Phase	3	Locked-rotor Torque	17 LB-FT
NEMA Design Code	A	KVA Code	P	Starting Current	48.3 A
Service Factor (S.F.)	1.15			No-load Current	1.25 A
NEMA Nom. Eff.	86.5	Power Factor	91	Line-line Res. @ 25°C	3.48 Ω
Rating - Duty	40C AMB-CONT			Temp. Rise @ Rated Load	63°C
S.F. Amps				Temp. Rise @ S.F. Load	74°C
				Locked-rotor Power Factor	42
				Rotor inertia	0.127 LB-FT ²

Load Characteristics 460 V, 60 Hz, 3 HP

% of Rated Load	25	50	75	100	125	150	S.F.
Power Factor	59	79	87	90	91	90	91
Efficiency	80.1	86.4	87.3	86.9	85.7	83.9	86.2
Speed	3567	3541	3510	3479	3443	3403	3457
Line amperes	1.53	2.07	2.78	3.55	4.42	5.4	4.07

Performance Graph at 460V, 60Hz, 3.0HP Typical performance - Not guaranteed values





CD0005



LOW VOLTAGE
(2Y)



LINE

HIGH VOLTAGE
(1Y)



LINE

NOTES:

1. INTERCHANGE ANY TWO LINE LEADS TO REVERSE ROTATION.
2. OPTIONAL THERMOSTATS ARE PROVIDED WHEN SPECIFIED.
3. ACTUAL NUMBER OF INTERNAL PARALLEL CIRCUITS MAY BE A MULTIPLE OF THOSE SHOWN ABOVE.
4. LEAD COLORS ARE OPTIONAL. LEADS MUST ALWAYS BE NUMBERED AS SHOWN.

REV. DESC: REVISE TO SHOW OPTIONAL COLORS			
REV. LTR: E	BY: JLP	REVISED: 01/19/99 10:15	TDR: 0171435
900003		FILE: AAA00005140	MDL: -
		MTL: -	

BALDOR ELECTRIC Co.

3PH, DV, 9 LEADS

CD0005