

BALDOR® • ***RELIANCE***

Product Information Packet

CSPM3611T

3HP, 1800RPM, 3PH, 60HZ, 182TC, 3544M, TEFC, F3

Part Detail							
Revision:	N	Status:	PRD/A	Change #:		Proprietary:	No
Type:	AC	Prod. Type:	3544M	Elec. Spec:	35WGM362	CD Diagram:	CD0005
Enclosure:	TEFC	Mfg Plant:		Mech. Spec:	35X060	Layout:	35LYX060
Frame:	182TC	Mounting:	F3	Poles:	04	Created Date:	07-21-2009
Base:	RG	Rotation:	R	Insulation:	F	Eff. Date:	10-31-2016
Leads:	9#18					Replaced By:	
Literature:		Elec. Diagram:					

Nameplate NP1256L										
CAT.NO.	CSPM3611T									
SPEC.	35X060M362G1									
HP	3									
VOLTS	230/460									
AMP	8/4									
RPM	1800									
FRAME	182TC				HZ	60			PH	3
SER.F.	1.00		CODE	J	DES	-		CLASS	F	
NEMA-NOM-EFF	89.5		PF	89						
RATING	40C AMB-CONT									
CC	010A				USABLE AT 208V					
DE	6206			ODE	6203					
ENCL	TEFC		SN							
	CSPM3611T									

Parts List		
Part Number	Description	Quantity
SA183928	SA 35X060M362G1	1.000 EA
RA171774	RA 35X060M362G1	1.000 EA
NS2512A01	INSULATOR, CONDUIT BOX X	1.000 EA
35CB4007	KOBX,W/PRIMER (REL# 79097-49-C)	1.000 EA
35GS3009	GASKET, KOBX 35CB4006 (411881-15A)	1.000 EA
WD4101A13	STEEL CAPLUG,BP-1 1/8, PLUG D3561S	1.000 EA
51XB1016A05	10-16X5/16HX WA SL SR TYB (F/S)	2.000 EA
11XW1032G06	10-32 X .38, TAPTITE II, HEX WSHR SLTD U	1.000 EA
HW3001B01	BRASS CUP WASHER, FOR #8 SCREW	1.000 EA
35FE3100M01	FREP TEFC ASSEMBLY FOR ROUTING	1.000 EA
HW4500A01	1641B(ALEMITE)400 UNIV, GREASE FITT	1.000 EA
HW5100A03SP	WAVY WASHER (W1543-017)	1.000 EA
35EP3304A01	STD PULLEY 182-4TC ENCL 206 BRG W/ GREAS	1.000 EA
HW4500A01	1641B(ALEMITE)400 UNIV, GREASE FITT	1.000 EA
10XN2520A24	1/4-20X 1 1/2 HEX HD X	4.000 EA
HW1001A25	LOCKWASHER 1/4, ZINC PLT .493 OD, .255 I	4.000 EA
51XB1214A16	12-14X1.00 HXWSSLD SERTYB	1.000 EA
35FH4005A84SP	IEC FH W/GRSR, NO DIMPLES PRIMED	1.000 EA
51XW1032A06	10-32 X .38, TAPTITE II, HEX WSHR SLTD S	3.000 EA
35CB4519	CB LID RAW & UNPRIMED, REL# 79097-50-B	1.000 EA
35GS3019A01	LEXIDE GASKET, FOR KOBX LID 35CB4519	1.000 EA
51XW0832A07	8-32 X .44, TAPTITE II, HEX WSHR SLTD SE	4.000 EA
HW2501E16	3KEY, 1/4 SQ X 1.750	1.000 EA
HA7000A02	KEY RETAINER RING, 1 1/8 DIA, 1 3/8 DIA	1.000 EA

Parts List (continued)		
Part Number	Description	Quantity
85XU0407S04	4X1/4 U DRIVE PIN STAINLESS	2.000 EA
MJ1000A02	GREASE, POLYREX EM EXXON (USe 4824-15A)	0.050 LB
35FN3002A05	EXFN, PLASTIC, 6.376 OD, .638 ID	1.000 EA
MG1025N19	WILKOFASST, 778.50, RELIANCE BLUE-GREEN	0.017 GA
HA3100A24	THRUBOLT 10-32 X 10.625	4.000 EA
LC0005E01	CONN.DIA./WARNING LABEL (LC0005/LB1119N)	1.000 EA
NP1256L	ALUM UL CSA CC	1.000 EA
36PA1000	PKG GRP, PRINT PK1016A06	1.000 EA
MN416A01	TAG-INSTAL-MAINT no wire (1200/bx) 11/14	1.000 EA

AC Induction Motor Performance Data

Record # 29272 - Typical performance - not guaranteed values

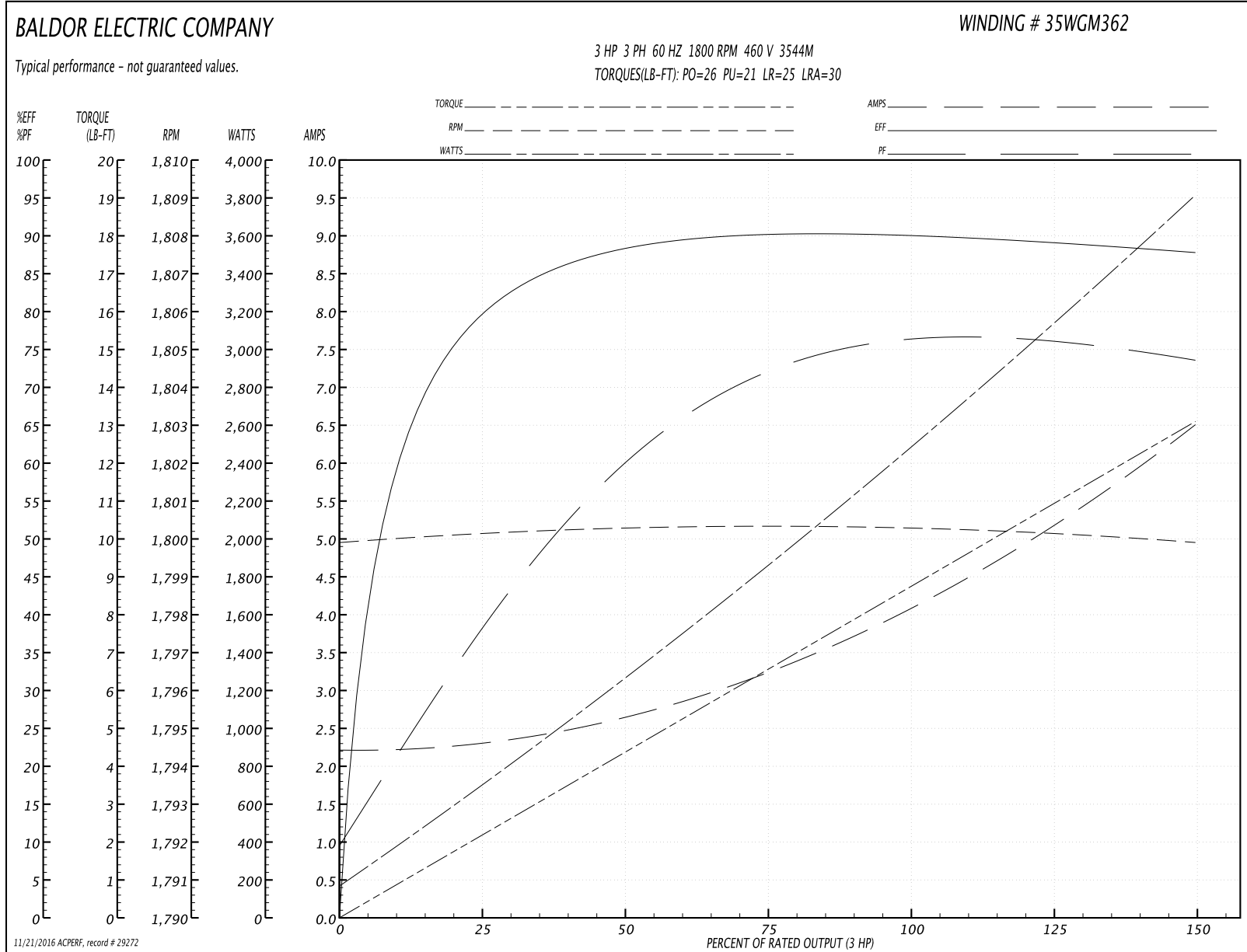
Winding: 35WGM362-R001	Type: 3544M	Enclosure: TEFC
-------------------------------	--------------------	------------------------

Nameplate Data				460 V, 60 Hz: High Voltage Connection	
Rated Output (HP)	3			Full Load Torque	8.74 LB-FT
Volts	230/460			Start Configuration	direct on line
Full Load Amps	8/4			Breakdown Torque	26 LB-FT
R.P.M.	1800			Pull-up Torque	21 LB-FT
Hz	60	Phase	3	Locked-rotor Torque	25 LB-FT
NEMA Design Code	-	KVA Code	J	Starting Current	30 A
Service Factor (S.F.)	1			No-load Current	2.25 A
NEMA Nom. Eff.	89.5	Power Factor	89	Line-line Res. @ 25°C	4.4125 Ω
Rating - Duty	40C AMB-CONT			Temp. Rise @ Rated Load	53°C
				Locked-rotor Power Factor	53
				Rotor inertia	0.261 LB-FT ²

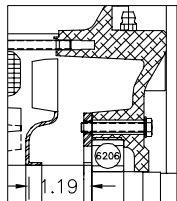
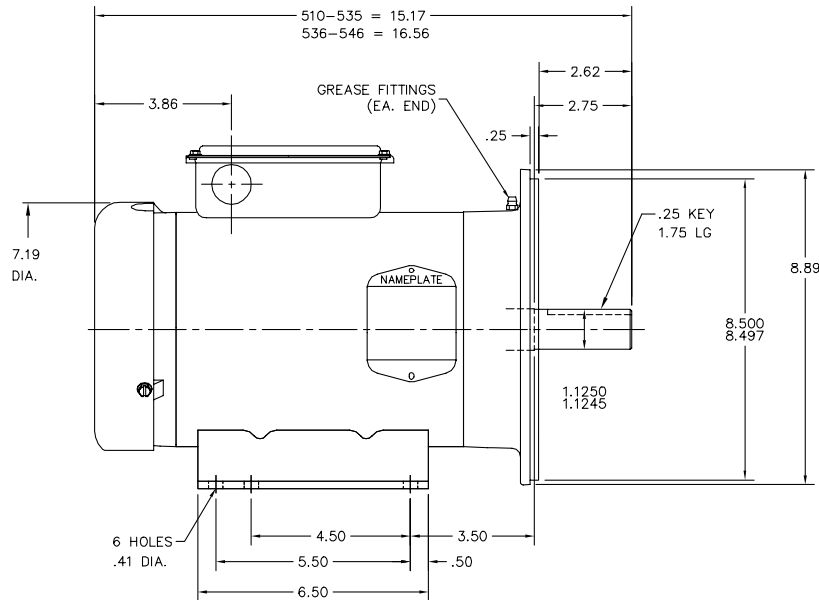
Load Characteristics 460 V, 60 Hz, 3 HP

% of Rated Load	25	50	75	100	125	150
Power Factor	39	61	72	76	76	74
Efficiency	79.3	87.8	90.1	90.3	89.2	87.6
Speed	1800	1800	1801	1800	1800	1800
Line amperes	2.25	2.63	3.27	4.11	5.2	6.5

Performance Graph at 460V, 60Hz, 3.0HP Typical performance - Not guaranteed values

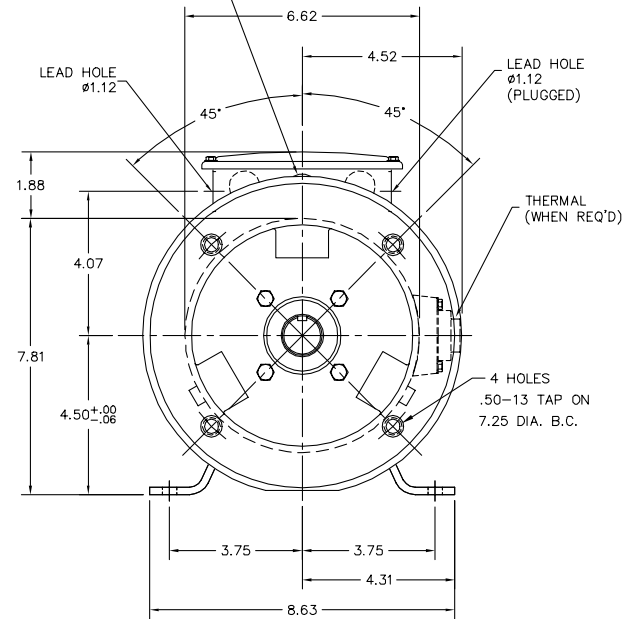


35LYX060



PULLEY DETAIL

1 X ϕ .88 KNOCKOUT (PU. END)
2 X ϕ .88 KNOCKOUTS (FR. END)



CUSTOMER IS RESPONSIBLE FOR DETERMINING THAT MOTOR PERFORMANCE IS SUITABLE IN THE APPLICATION.

REV. DESC: NEW	VERSION: 00	TDR: 000000448472
REV. LTR: -	REVISD: 15:45:57 12/03/2007	BY: ENALEMO
FILE: \AAA\00152\729		
MTL: -		

BALDOR • DODGE • RELIANCE

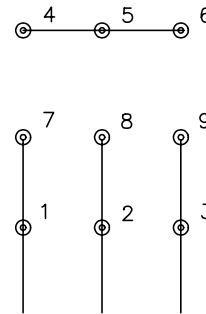
HORZ 182-4TC TEFC M F3 W/35CB4007

35LYX060

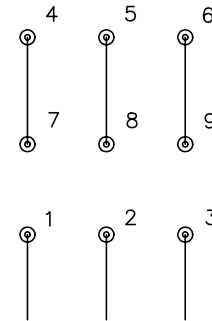
CD0005



LOW VOLTAGE
(2Y)



HIGH VOLTAGE
(1Y)



NOTES:

1. INTERCHANGE ANY TWO LINE LEADS TO REVERSE ROTATION.
2. OPTIONAL THERMOSTATS ARE PROVIDED WHEN SPECIFIED.
3. ACTUAL NUMBER OF INTERNAL PARALLEL CIRCUITS MAY BE A MULTIPLE OF THOSE SHOWN ABOVE.
4. LEAD COLORS ARE OPTIONAL. LEADS MUST ALWAYS BE NUMBERED AS SHOWN.

REV. DESC: REVISE TO SHOW OPTIONAL COLORS			
REV. LTR: E	BY: JLP	REVISED: 01/19/99 10:15	TDR: 0171435
90000		FILE: AAA00005140	MDL: -
		MTL: -	

BALDOR ELECTRIC Co.

3PH, DV, 9 LEADS

CD0005