

BALDOR® • **RELIANCE**

Product Information Packet

CSSEWDM3558T

2HP, 1755RPM, 3PH, 60HZ, 145TC, 3538M, TEFC, F1

| Part Detail | | | | | | | |
|-------------|-------|----------------|-------|-------------|----------|---------------|------------|
| Revision: | M | Status: | PRD/A | Change #: | | Proprietary: | No |
| Type: | AC | Prod. Type: | 3538M | Elec. Spec: | 35WGP567 | CD Diagram: | CD0005 |
| Enclosure: | TEFC | Mfg Plant: | | Mech. Spec: | 35Z202 | Layout: | 35LYZ202 |
| Frame: | 145TC | Mounting: | F1 | Poles: | 04 | Created Date: | 01-18-2011 |
| Base: | RG | Rotation: | R | Insulation: | H | Eff. Date: | 09-14-2016 |
| Leads: | 9#18 | | | | | Replaced By: | |
| Literature: | | Elec. Diagram: | | | | | |

| | | | | | | | | | | |
|----------------------------|--------------|--|-------------|------------|-----------------------|----|--|--------------|-----------|---|
| Nameplate NP1953A01 | | | | | | | | | | |
| CAT.NO. | CSSEWDM3558T | | | | | | | | | |
| SPEC. | 35Z202P567G1 | | | | | | | | | |
| HP | 2 | | | | | | | | | |
| VOLTS | 230/460 | | | | | | | | | |
| AMP | 5.4/2.7 | | | | | | | | | |
| RPM | 1755 | | | | | | | | | |
| FRAME | 145TC | | | | HZ | 60 | | | PH | 3 |
| SER.F. | 1.15 | | CODE | L | DES | B | | CLASS | H | |
| NEMA-NOM-EFF | 88.5 | | | PF | 78 | | | | | |
| RATING | 40C AMB-CONT | | | | | | | | | |
| CC | 010A | | | | USABLE AT 208V | | | 5.7 | | |
| DE | 6205 | | | ODE | 6205 | | | | | |
| ENCL | TEFC | | SN | | | | | | | |

| Parts List | | |
|-------------|--|----------|
| Part Number | Description | Quantity |
| SA241959 | SA 35Z202P567G1 | 1.000 EA |
| RA228875 | RA 35Z202P567G1 | 1.000 EA |
| 34FN3002B01 | EXTERNAL FAN, PLASTIC, .637/.639 HUB W/ | 1.000 EA |
| 11XW1032G06 | 10-32 X .38, TAPTITE II, HEX WSHR SLTD U | 1.000 EA |
| 35EP1917A09 | FREP TEFC 205 BRG NO GRS 4X.125 NPT (SS) | 1.000 EA |
| RM1070A25 | O-RING,VITON 6.19 ID X .062 C.S. NOM | 1.000 EA |
| HW4600E99 | AXIAL FACE SEAL 76925-9042-0447 SS CASE | 1.000 EA |
| HW4500A33 | 1/8 NPT STAINLESS,HOLO-KROME #13002,PRES | 3.000 EA |
| HW5100A05 | WVY WSHR F/205 & 304 BRGS | 1.000 EA |
| 35PE1916A05 | PUEP 56C ENC 205 BRG 4X.125 NPT (SS) | 1.000 EA |
| RM1070A25 | O-RING,VITON 6.19 ID X .062 C.S. NOM | 1.000 EA |
| HW4600E99 | AXIAL FACE SEAL 76925-9042-0447 SS CASE | 1.000 EA |
| HW4500A33 | 1/8 NPT STAINLESS,HOLO-KROME #13002,PRES | 3.000 EA |
| RM1070A26 | O-RING,4.5MM I.D.X1.5MM C.S. (VITON) | 4.000 EA |
| 51XB1214A16 | 12-14X1.00 HXWSSLD SERTYB | 1.000 EA |
| 35FH4005A39 | IEC FH NO GREASER (#304 SS)CLEAN ONLY | 1.000 EA |
| 10XN1032S06 | HEX HD CAP SCREW, SS | 3.000 EA |
| 36GS3008SP | WHITE NEOPREME KO BOX LID GASKET | 1.000 EA |
| 35CB4515 | 35 CB LID #304 STAINLESS STEEL | 1.000 EA |
| 59XN0832S07 | 8/32 X 7/16 HX WS HD SER X | 4.000 EA |
| HW2502D13 | SS KEY, 3/16 SQ X 1.375 | 1.000 EA |
| HA7000A04 | KEY RETAINER 0.625 DIA SHAFTS | 1.000 EA |
| MJ5001A27 | 32220KN GRAY SEALER *MIN BUY 4 QTS=1GAL | 0.005 QT |
| MJ5004A37 | #76732 LOCTITE ANTISEIZE THRD COMPOUND | 0.005 EA |

| Parts List (continued) | | |
|-------------------------------|--|-----------------|
| Part Number | Description | Quantity |
| HA5027A02 | HA4054 T-DRAIN X2 BAGGED WITH LABEL | 1.000 EA |
| MJ1000A02 | GREASE, POLYREX EM EXXON (USe 4824-15A) | 0.050 LB |
| WD5603A01 | KIT, CLOSED-END LEAD SPLICE (18-14GA) | 1.000 EA |
| HA3100S10 | THRUBOLT 11.50LG SS | 4.000 EA |
| 36PA1000 | PKG GRP, PRINT PK1016A06 | 1.000 EA |
| MN416A01 | TAG-INSTAL-MAINT no wire (1200/bx) 11/14 | 1.000 EA |
| HA5027A07 | 85XU1208S08 FACE DRAIN PINS BAGGED | 1.000 EA |

AC Induction Motor Performance Data

Record # 57379 - Typical performance - not guaranteed values

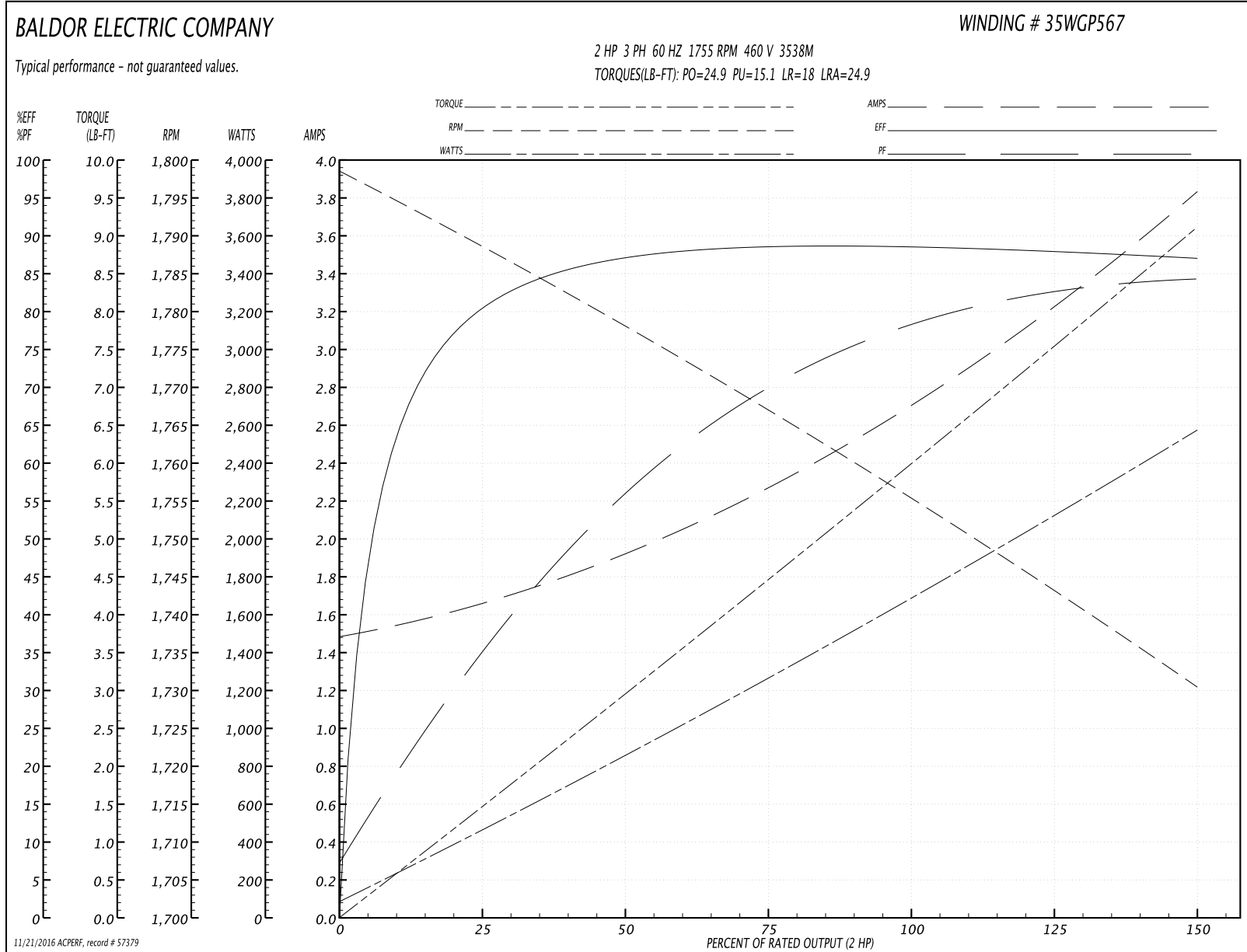
| | | |
|-------------------------------|--------------------|------------------------|
| Winding: 35WGP567-R015 | Type: 3538M | Enclosure: TEFC |
|-------------------------------|--------------------|------------------------|

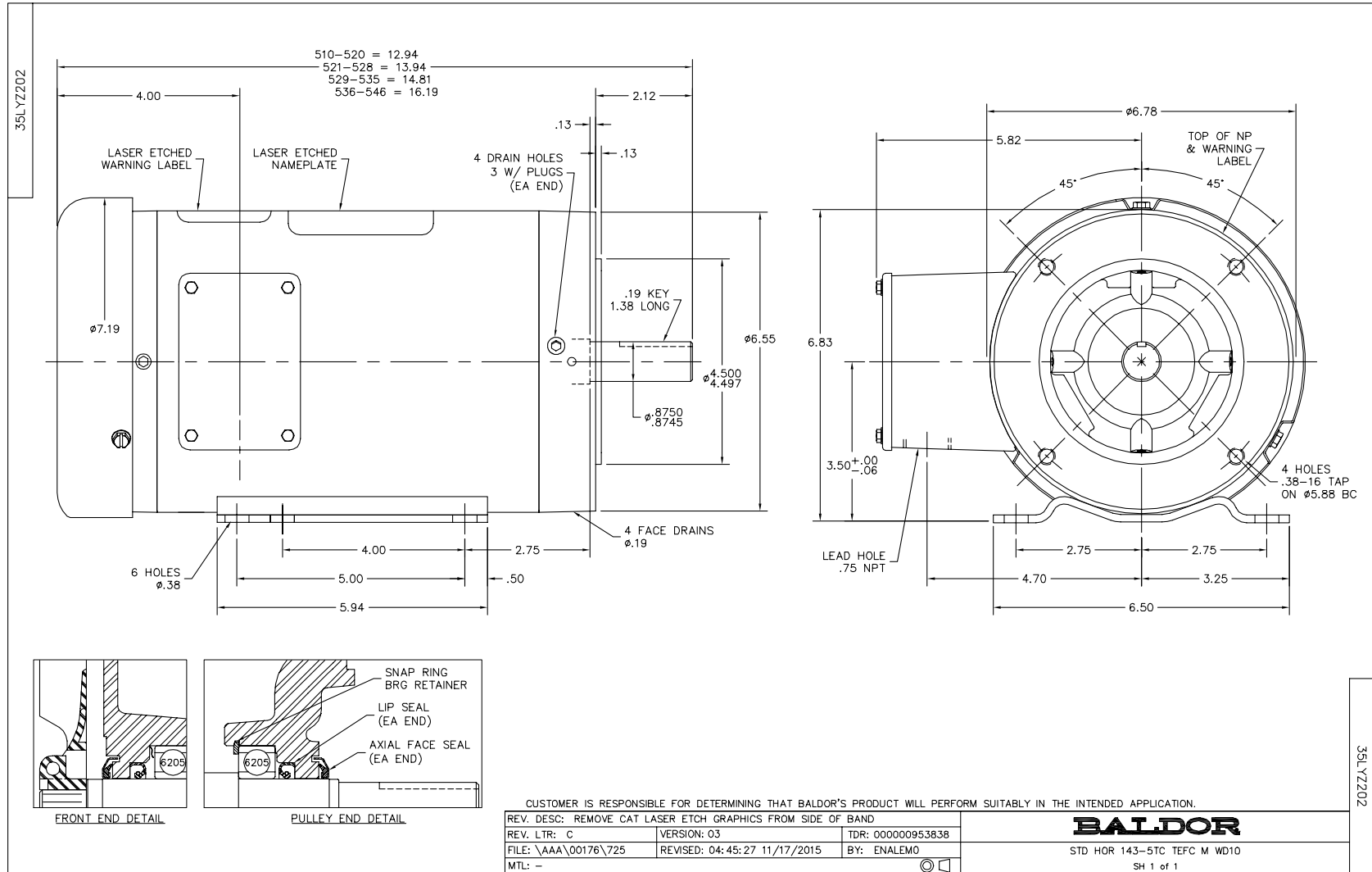
| Nameplate Data | | | | 460 V, 60 Hz: High Voltage Connection | |
|-----------------------|--------------|--------------|----|--|--------------------------|
| Rated Output (HP) | 2 | | | Full Load Torque | 5.94 LB-FT |
| Volts | 230/460 | | | Start Configuration | direct on line |
| Full Load Amps | 5.4/2.7 | | | Breakdown Torque | 24.9 LB-FT |
| R.P.M. | 1755 | | | Pull-up Torque | 15.1 LB-FT |
| Hz | 60 | Phase | 3 | Locked-rotor Torque | 18 LB-FT |
| NEMA Design Code | B | KVA Code | L | Starting Current | 24.9 A |
| Service Factor (S.F.) | 1.15 | | | No-load Current | 1.51 A |
| NEMA Nom. Eff. | 88.5 | Power Factor | 78 | Line-line Res. @ 25°C | 6.45 Ω |
| Rating - Duty | 40C AMB-CONT | | | Temp. Rise @ Rated Load | 58°C |
| S.F. Amps | | | | Temp. Rise @ S.F. Load | 69°C |
| | | | | Locked-rotor Power Factor | 45.7 |
| | | | | Rotor inertia | 0.225 LB-FT ² |

Load Characteristics 460 V, 60 Hz, 2 HP

| % of Rated Load | 25 | 50 | 75 | 100 | 125 | 150 | S.F. |
|-----------------|------|------|------|------|------|------|------|
| Power Factor | 36 | 57 | 70 | 77 | 82 | 85 | 80 |
| Efficiency | 80.1 | 87.1 | 88.5 | 88.6 | 88.1 | 87 | 88.3 |
| Speed | 1788 | 1778 | 1767 | 1756 | 1744 | 1730 | 1749 |
| Line amperes | 1.63 | 1.9 | 2.27 | 2.71 | 3.24 | 3.81 | 3.03 |

Performance Graph at 460V, 60Hz, 2.0HP Typical performance - Not guaranteed values

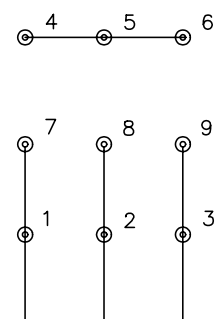




CD0005

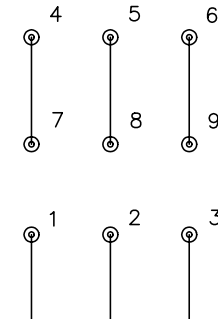


LOW VOLTAGE
(2Y)



LINE

HIGH VOLTAGE
(1Y)



LINE

NOTES:

1. INTERCHANGE ANY TWO LINE LEADS TO REVERSE ROTATION.
2. OPTIONAL THERMOSTATS ARE PROVIDED WHEN SPECIFIED.
3. ACTUAL NUMBER OF INTERNAL PARALLEL CIRCUITS MAY BE A MULTIPLE OF THOSE SHOWN ABOVE.
4. LEAD COLORS ARE OPTIONAL. LEADS MUST ALWAYS BE NUMBERED AS SHOWN.

| | | | |
|---|---------|-------------------------|--------------|
| REV. DESC: REVISE TO SHOW OPTIONAL COLORS | | | |
| REV. LTR: E | BY: JLP | REVISED: 01/19/99 10:15 | TDR: 0171435 |
| 90000 | | FILE: AAA00005140 | MDL: - |
| | | MTL: - | |

BALDOR ELECTRIC Co.

3PH, DV, 9 LEADS

CD0005