

# **BALDOR**® • ***RELIANCE***

## **Product Information Packet**

# **CSSWDM3538-5**

**.5HP, 1755RPM, 3PH, 60HZ, 56C, 3513M, TENV, F1**

Part Detail							
Revision:	J	Status:	PRD/A	Change #:		Proprietary:	No
Type:	AC	Prod. Type:	3512M	Elec. Spec:	35WGM808	CD Diagram:	CD0006
Enclosure:	TENV	Mfg Plant:		Mech. Spec:	35V814	Layout:	35LYV814
Frame:	56C	Mounting:	F1	Poles:	04	Created Date:	06-22-2010
Base:	RG	Rotation:	R	Insulation:	F	Eff. Date:	11-04-2016
Leads:	3#18					Replaced By:	
Literature:		Elec. Diagram:					

<b>Nameplate NP1951A05</b>										
<b>CAT.NO.</b>	CSSWDM3538-5									
<b>SPEC.</b>	35V814M808G1									
<b>HP</b>	.5									
<b>VOLTS</b>	575									
<b>AMP</b>	.7									
<b>RPM</b>	1755									
<b>FRAME</b>	56C				<b>HZ</b>	60			<b>PH</b>	3
<b>SER.F.</b>	1.25		<b>CODE</b>	N	<b>DES</b>	B		<b>CLASS</b>	F	
<b>NEMA-NOM-EFF</b>	80			<b>PF</b>	64					
<b>RATING</b>	40C AMB-CONT									
<b>CC</b>									<b>USABLE AT 208V</b>	
<b>DE</b>	6205				<b>ODE</b>	6203				
<b>ENCL</b>	TENV		<b>SN</b>							
	SFA .8									

Parts List		
Part Number	Description	Quantity
SA199210	SA 35V814M808G1	1.000 EA
RA186548	RA 35V814M808G1	1.000 EA
NS2512A01	INSULATOR, CONDUIT BOX X	1.000 EA
35CB5001A08	CONDUIT BOX KIT, S/P 9-2 (ALL STAINLESS)	1.000 EA
HA5027A02	HA4054 T-DRAIN X2 BAGGED WITH LABEL	1.000 EA
11XW1032G06	10-32 X .38, TAPTITE II, HEX WSHR SLTD U	1.000 EA
HW3001B01	BRASS CUP WASHER, FOR #8 SCREW	1.000 EA
35FE1913A01	FR ENDPLATE ASSY	1.000 EA
HW5100A03SP	WAVY WASHER (W1543-017)	1.000 EA
35PE1914A02	PU EP ASSY. FOR LOCKED BRG	1.000 EA
HW4606A02	JM CLIPPER/SEAL (LWE-0938-1624-AL23)	1.000 EA
12XN1032S22	10-32 X 1 3/8 SLOT HEX, STAINLESS STEEL	2.000 EA
HA1049A01	DUBO LOK WASHER SIZE 10 (NYLON LOCK SEAL	2.000 EA
HA1049A01	DUBO LOK WASHER SIZE 10 (NYLON LOCK SEAL	4.000 EA
HW2502D13	SS KEY, 3/16 SQ X 1.375	1.000 EA
HA7000A04	KEY RETAINER 0.625 DIA SHAFTS	1.000 EA
MJ5001A02	732 CL SEALANT 3 OZ DIXIE BEARING 289100	0.001 EA
MJ1000A02	GREASE, POLYREX EM EXXON (USe 4824-15A)	0.050 LB
HA3100S45	THRU BOLT HEX-HEAD 7.95 10-32	4.000 EA
35PA1066	PKG GRP, PRINT PK1008A06	1.000 EA
MN416A01	TAG-INSTAL-MAINT no wire (1200/bx) 11/14	1.000 EA

**AC Induction Motor Performance Data**  
Record # 31558 - Typical performance - not guaranteed values

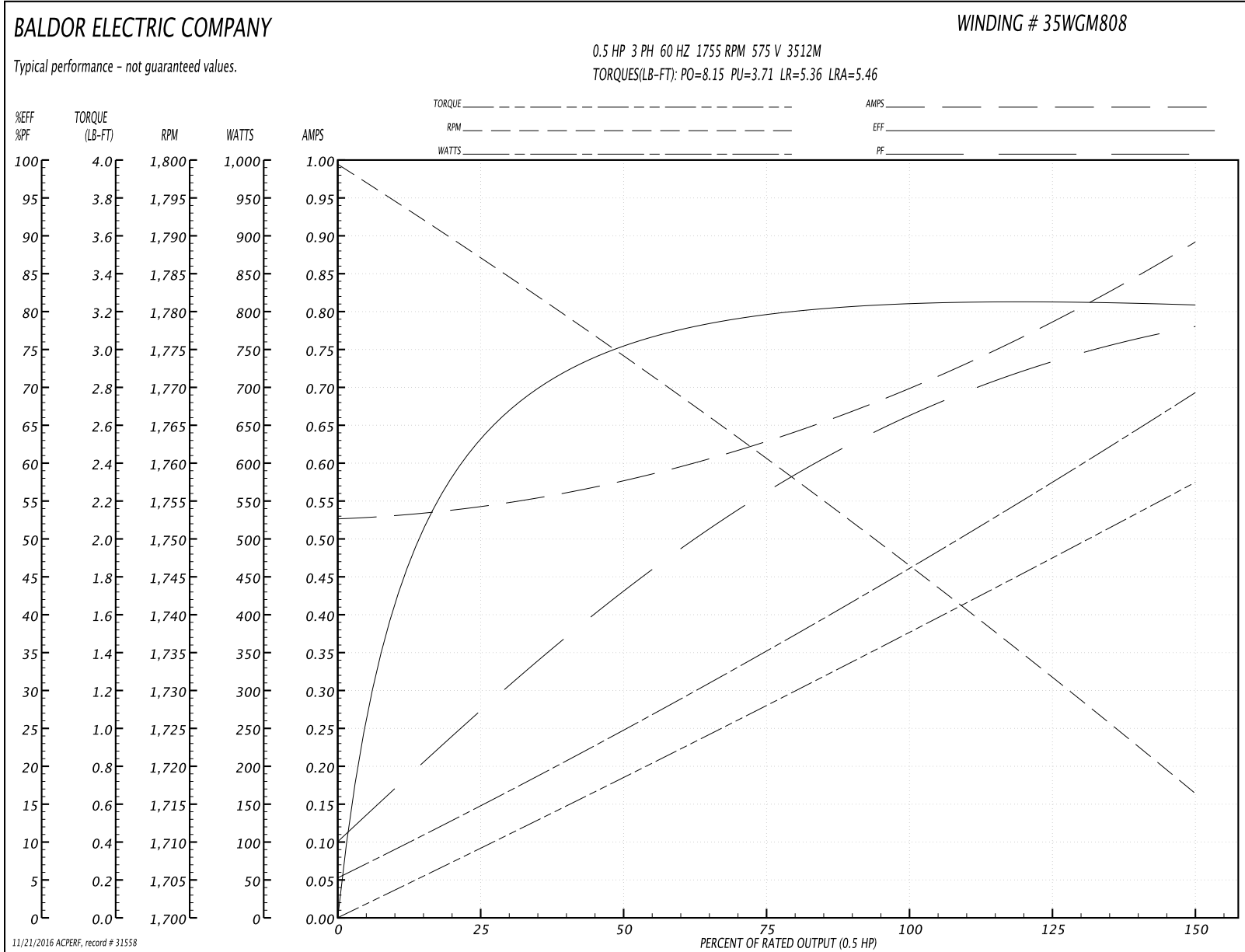
<b>Winding:</b> 35WGM808-R001	<b>Type:</b> 3512M	<b>Enclosure:</b> TENV
-------------------------------	--------------------	------------------------

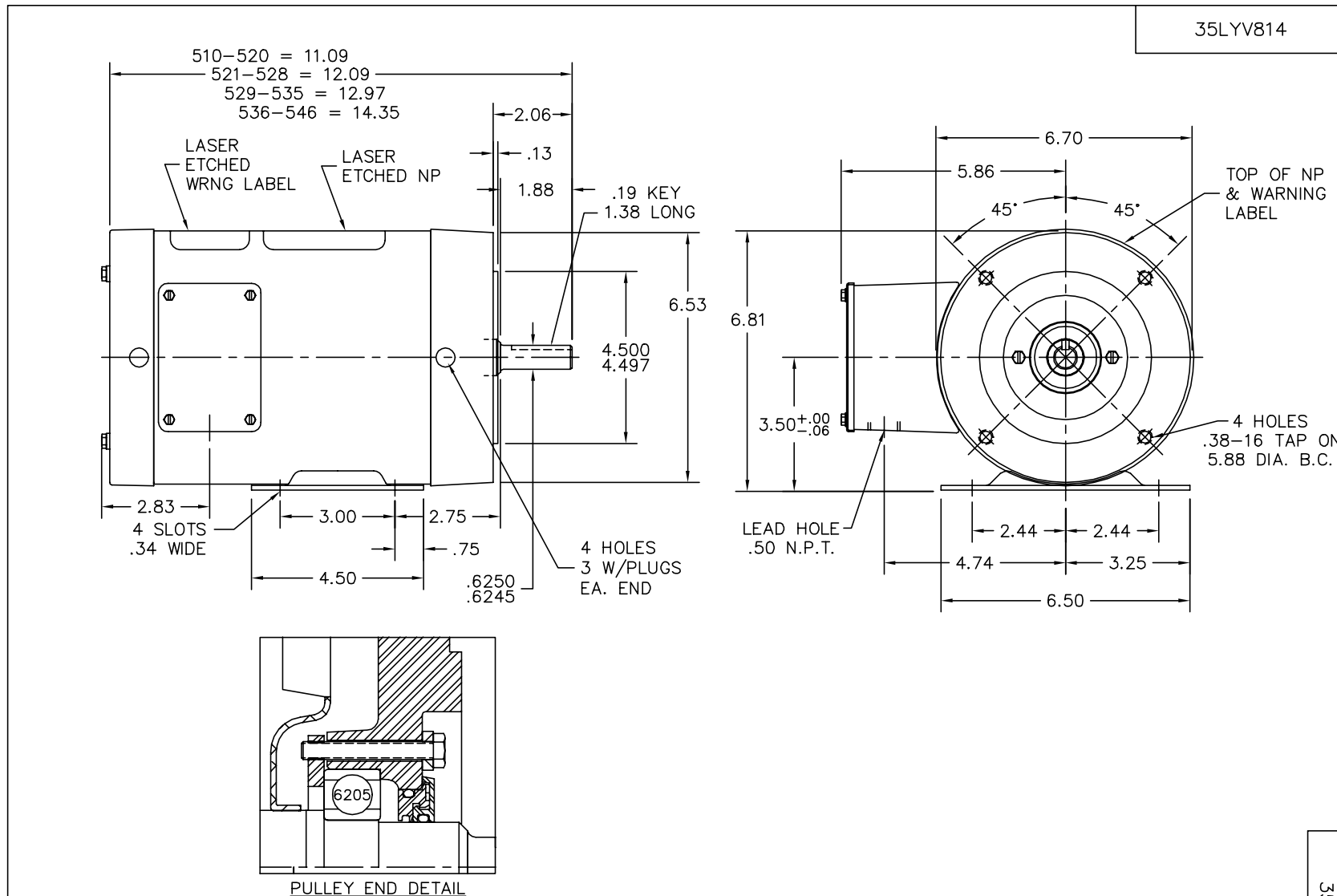
Nameplate Data				575 V, 60 Hz: Single Voltage Motor	
Rated Output (HP)	.5			Full Load Torque	1.51 LB-FT
Volts	575			Start Configuration	direct on line
Full Load Amps	.7			Breakdown Torque	8.15 LB-FT
R.P.M.	1755			Pull-up Torque	3.71 LB-FT
Hz	60	Phase	3	Locked-rotor Torque	5.36 LB-FT
NEMA Design Code	B	KVA Code	N	Starting Current	5.46 A
Service Factor (S.F.)	1.25			No-load Current	0.527 A
NEMA Nom. Eff.	80	Power Factor	64	Line-line Res. @ 25°C	50.4 Ω
Rating - Duty	40C AMB-CONT			Temp. Rise @ Rated Load	67°C
S.F. Amps	.8			Temp. Rise @ S.F. Load	79°C
				Locked-rotor Power Factor	69
				Rotor inertia	0.0709 LB-FT <sup>2</sup>

Load Characteristics 575 V, 60 Hz, 0.5 HP

% of Rated Load	25	50	75	100	125	150	S.F.
Power Factor	28	43	56	66	74	78	72
Efficiency	63.2	75.6	79.6	81.1	81.5	80.8	80.7
Speed	1786	1774	1760	1747	1732	1716	1747
Line amperes	0.542	0.576	0.634	0.7	0.782	0.894	0.793

Performance Graph at 575V, 60Hz, 0.5HP Typical performance - Not guaranteed values



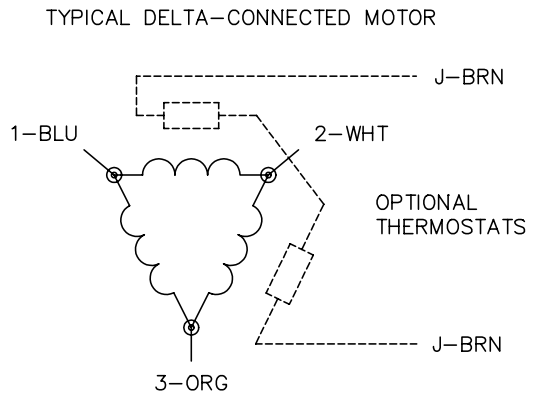
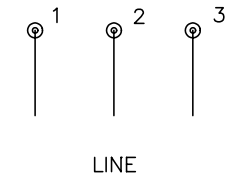
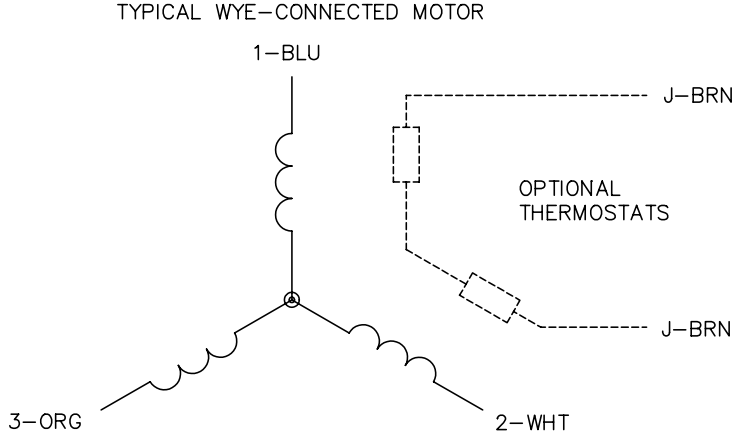


CUSTOMER IS RESPONSIBLE FOR DETERMINING THAT MOTOR PERFORMANCE IS SUITABLE IN THE APPLICATION.

REV. DESC: NEW			<b>BALDOR ELECTRIC Co.</b>
REV. LTR: -	VERSION: 00	TDR: 000000399337	
35LYV814	FILE: \AAA\00137\800	REVISED: 11:22:02 06/29/2006	HOR 56C TENV 35M WD4 W/LOCKED PU BRG & LASER ETCHED BAND
	MTL: -	BY: ENBRYPO	

35LYV814

CD0006



- NOTES:
1. THREE LEAD MOTOR MAY BE EITHER WYE CONNECTED OR DELTA CONNECTED.
  2. INTERCHANGE ANY TWO LINE LEADS TO REVERSE ROTATION.
  3. OPTIONAL THERMOSTATS ARE PROVIDED WHEN SPECIFIED.
  4. ACTUAL NUMBER OF INTERNAL PARALLEL CIRCUITS MAY VARY.
  5. LEAD COLORS ARE OPTIONAL. LEADS MUST BE NUMBERED AS SHOWN.

REV. DESC: REVISE TO SHOW OPTIONAL COLORS			
REV. LTR: D	BY: JLP	REVISED: 01/21/99 4:02	TDR: 0171435
9000D		FILE: AAA00005141	MDL: -
		MTL: -	

**BALDOR ELECTRIC Co.**  
3PH, SV, 3 LEADS, WYE OR DELTA CONNECTED

CD0006