

# **BALDOR**® • ***RELIANCE***

## **Product Information Packet**

# **CSSWDM3541**

**.75HP,3450RPM,3PH,60HZ,56C,3518M,TENV,F1**

Part Detail							
Revision:	W	Status:	PRD/A	Change #:		Proprietary:	No
Type:	AC	Prod. Type:	3518M	Elec. Spec:	35WGT097	CD Diagram:	CD0005
Enclosure:	TENV	Mfg Plant:		Mech. Spec:	35V814	Layout:	35LYV814
Frame:	56C	Mounting:	F1	Poles:	02	Created Date:	06-22-2007
Base:	RG	Rotation:	R	Insulation:	F	Eff. Date:	11-04-2016
Leads:	9#18					Replaced By:	
Literature:		Elec. Diagram:					

Nameplate NP1951A01										
CAT.NO.	CSSWDM3541									
SPEC.	35V814T097									
HP	.75									
VOLTS	230/460									
AMP	2.2/1.1									
RPM	3450									
FRAME	56C				HZ	60			PH	3
SER.F.	1.25		CODE	N	DES	B		CLASS	F	
NEMA-NOM-EFF	80			PF	80					
RATING	40C AMB-CONT									
CC									USABLE AT 208V	2.3
DE	6205				ODE	6203				
ENCL	TENV	SN								
	SFA 2.6/1.3									

Parts List		
Part Number	Description	Quantity
SA145405	SA 35V814T097	1.000 EA
RA134554	RA 35V814T097	1.000 EA
NS2512A01	INSULATOR, CONDUIT BOX X	1.000 EA
35CB1004A01	15 CB W/.50 NPT @ 6 & #8-32 LID HOLES (S	1.000 EA
35GS1041	35 MOLDED GASKET W/LIP, 1.12 LEAD HOLE,	1.000 EA
51XN1032A07	10-32 X 0.438 HX WS SL SR ZN	2.000 EA
11XW1032G06	10-32 X .38, TAPTITE II, HEX WSHR SLTD U	1.000 EA
HW3001B01	BRASS CUP WASHER, FOR #8 SCREW	1.000 EA
35EP1913A01	FRONT TENV 203 BRG NO GR SR S/P 9-2 (STAI	1.000 EA
HW4500A33	1/8 NPT STAINLESS,HOLO-KROME #13002,PRES	3.000 EA
HW5100A03SP	WAVY WASHER (W1543-017)	1.000 EA
35EP1914A02	PU EP FOR LOCKED 6205 BRG	1.000 EA
HW4500A33	1/8 NPT STAINLESS,HOLO-KROME #13002,PRES	3.000 EA
HW4606A02	JM CLIPPER/SEAL (LWE-0938-1624-AL23)	1.000 EA
12XN1032S22	10-32 X 1 3/8 SLOT HEX, STAINLESS STEEL	2.000 EA
HA1049A01	DUBO LOK WASHER SIZE 10 (NYLON LOCK SEAL	2.000 EA
35CB4515	35 CB LID #304 STAINLESS STEEL	1.000 EA
36GS3008SP	WHITE NEOPREME KO BOX LID GASKET	1.000 EA
59XN0832S07	8/32 X 7/16 HX WS HD SER X	4.000 EA
HW2502D13	SS KEY, 3/16 SQ X 1.375	1.000 EA
HA1049A01	DUBO LOK WASHER SIZE 10 (NYLON LOCK SEAL	4.000 EA
HA7000A04	KEY RETAINER 0.625 DIA SHAFTS	1.000 EA
MJ5001A02	732 CL SEALANT 3 OZ DIXIE BEARING 289100	0.001 EA
MJ1000A02	GREASE, POLYREX EM EXXON (USe 4824-15A)	0.050 LB

<b>Parts List (continued)</b>		
<b>Part Number</b>	<b>Description</b>	<b>Quantity</b>
MG1500Y02	PRIMER,347.29+347.29C ACTIVATOR WILKOPON	0.010 GA
HA3100S45	THRU BOLT HEX-HEAD 7.95 10-32	4.000 EA
MN416A01	TAG-INSTAL-MAINT no wire (1200/bx) 11/14	1.000 EA
35PA1066	PKG GRP, PRINT PK1008A06	1.000 EA

**AC Induction Motor Performance Data**  
Record # 9255 - Typical performance - not guaranteed values

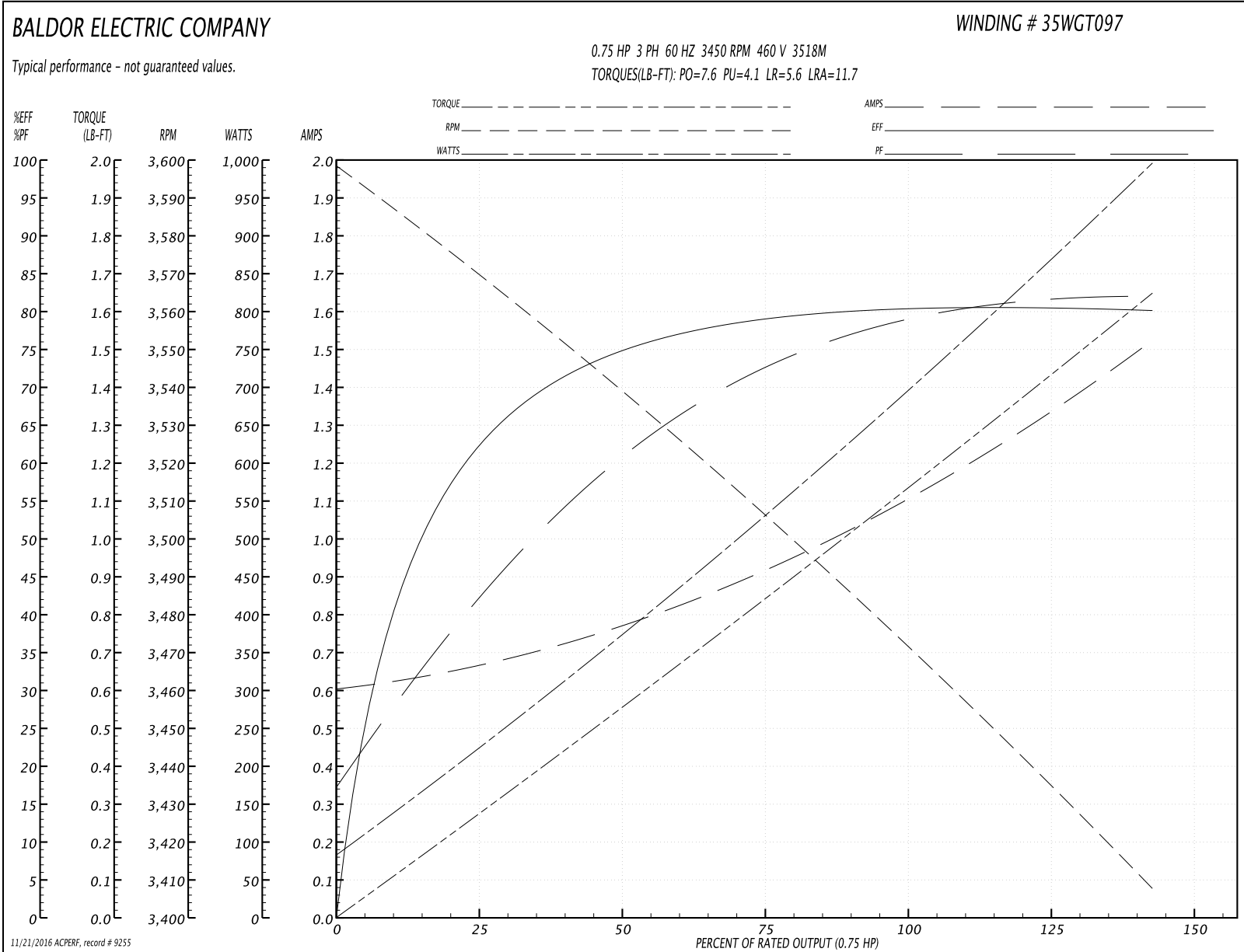
<b>Winding:</b> 35WGT097-R001	<b>Type:</b> 3518M	<b>Enclosure:</b> TENV
-------------------------------	--------------------	------------------------

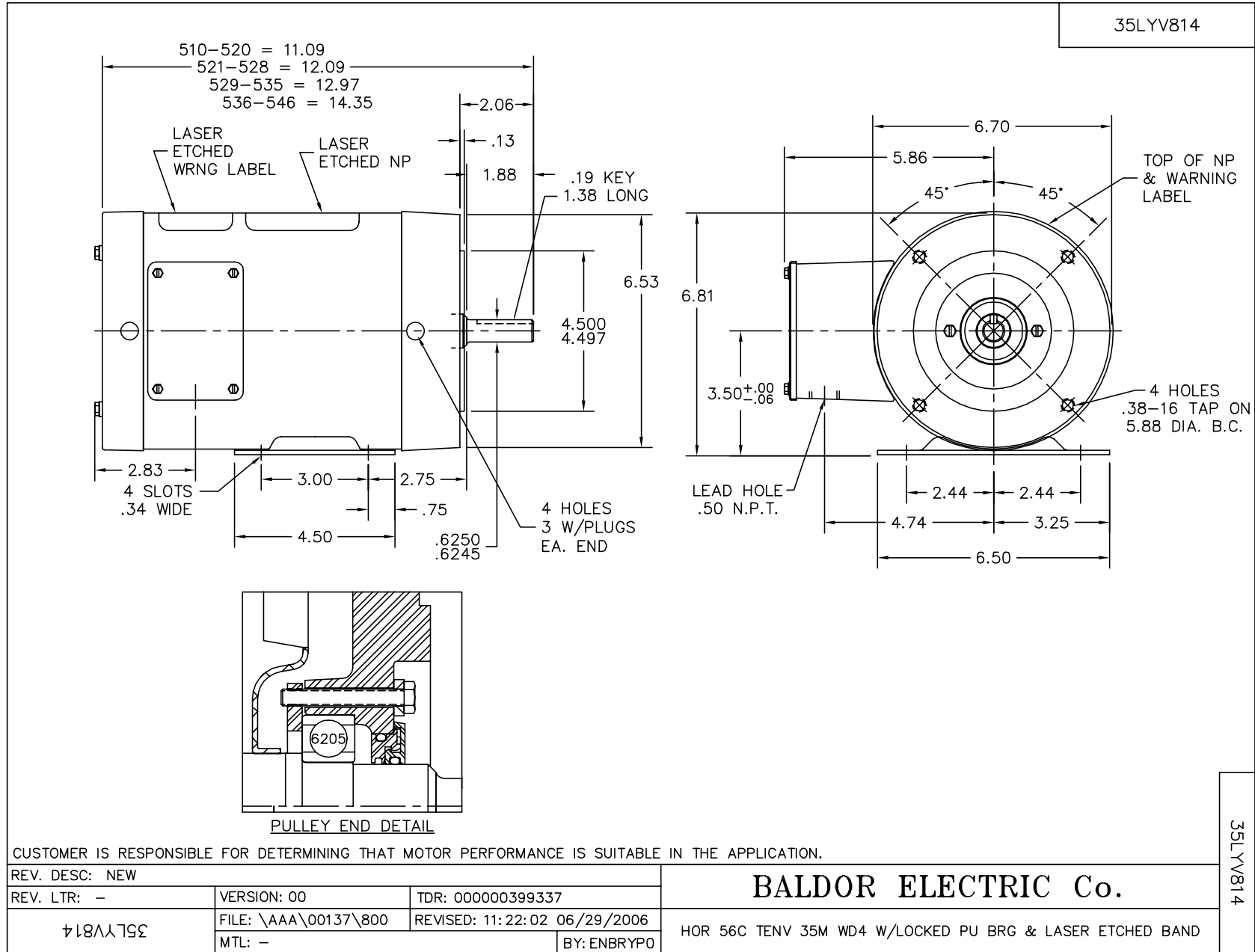
Nameplate Data				460 V, 60 Hz: High Voltage Connection	
Rated Output (HP)	.75			Full Load Torque	1.1 LB-FT
Volts	230/460			Start Configuration	direct on line
Full Load Amps	2.2/1.1			Breakdown Torque	7.6 LB-FT
R.P.M.	3450			Pull-up Torque	4.1 LB-FT
Hz	60	Phase	3	Locked-rotor Torque	5.6 LB-FT
NEMA Design Code	B	KVA Code	N	Starting Current	11.7 A
Service Factor (S.F.)	1.25			No-load Current	0.61 A
NEMA Nom. Eff.	80	Power Factor	80	Line-line Res. @ 25°C	14.8 Ω
Rating - Duty	40C AMB-CONT			Temp. Rise @ Rated Load	65°C
S.F. Amps	2.6/1.3			Temp. Rise @ S.F. Load	77°C

Load Characteristics 460 V, 60 Hz, 0.75 HP

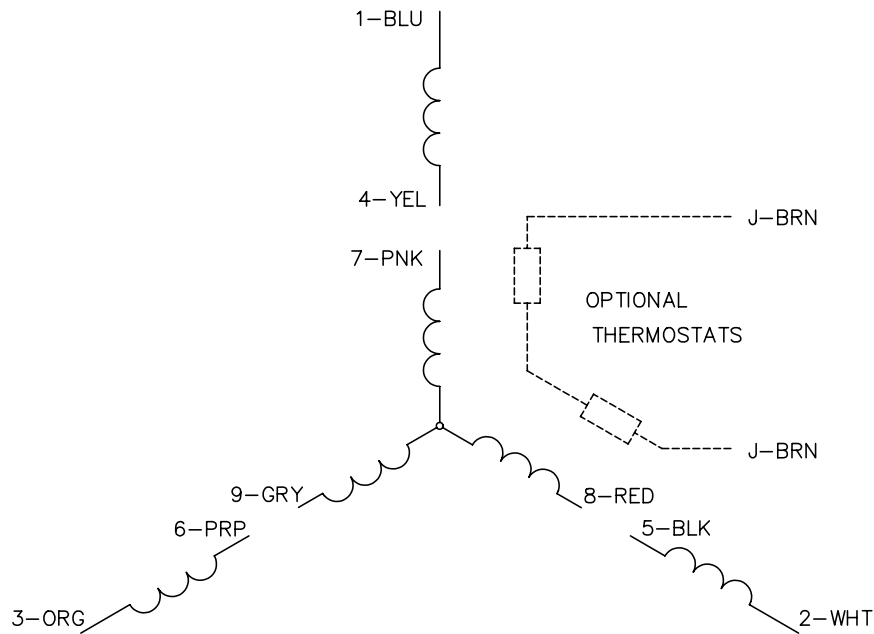
% of Rated Load	25	50	75	100	125	150	S.F.
Power Factor	45	63	73	80	81	80	0
Efficiency	62.6	74.4	78.7	80.4	80.7	80.1	0
Speed	3571	3536	3509	3477	3444	3406	0
Line amperes	0.66	0.76	0.91	1.09	1.29	1.52	1.3

Performance Graph at 460V, 60Hz, 0.75HP Typical performance - Not guaranteed values

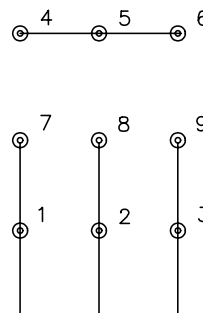




CD0005

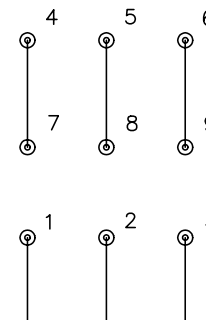


LOW VOLTAGE  
(2Y)



LINE

HIGH VOLTAGE  
(1Y)



LINE

NOTES:

1. INTERCHANGE ANY TWO LINE LEADS TO REVERSE ROTATION.
2. OPTIONAL THERMOSTATS ARE PROVIDED WHEN SPECIFIED.
3. ACTUAL NUMBER OF INTERNAL PARALLEL CIRCUITS MAY BE A MULTIPLE OF THOSE SHOWN ABOVE.
4. LEAD COLORS ARE OPTIONAL. LEADS MUST ALWAYS BE NUMBERED AS SHOWN.

REV. DESC: REVISE TO SHOW OPTIONAL COLORS			
REV. LTR: E	BY: JLP	REVISED: 01/19/99 10:15	TDR: 0171435
900000		FILE: AAA00005140	MDL: -
		MTL: -	

**BALDOR ELECTRIC Co.**

3PH, DV, 9 LEADS

CD0005