

# **BALDOR**® • **RELIANCE**

## **Product Information Packet**

# **ZDBRPM402004**

**200HP, 1785RPM, 3PH, N/AHZ, L4022, TEBC, FOOT,**

Part Detail							
Revision:	-	Status:	PRD/A	Change #:		Proprietary:	No
Type:	AC	Prod. Type:		Elec. Spec:	L0116A	CD Diagram:	422927-001
Enclosure:	TEBC	Mfg Plant:		Mech. Spec:		Layout:	609994-001
Frame:	L4022	Mounting:	F3	Poles:	04	Created Date:	04-09-2015
Base:		Rotation:	R	Insulation:	H	Eff. Date:	04-13-2015
Leads:						Replaced By:	
Literature:		Elec. Diagram:					

Nameplate 000613006NS																															
	<table border="1"> <thead> <tr> <th>DUTY</th> <th>HP</th> <th>RPM</th> <th>AMPS</th> <th>VOLTS</th> <th>HZ</th> </tr> </thead> <tbody> <tr> <td>CONT</td> <td>200</td> <td>1785</td> <td>234</td> <td>460</td> <td>60</td> </tr> <tr> <td>CONT</td> <td>200</td> <td>3750</td> <td>228</td> <td>460</td> <td>126.2</td> </tr> <tr> <td></td> <td></td> <td></td> <td></td> <td></td> <td></td> </tr> <tr> <td></td> <td></td> <td></td> <td></td> <td></td> <td></td> </tr> </tbody> </table>	DUTY	HP	RPM	AMPS	VOLTS	HZ	CONT	200	1785	234	460	60	CONT	200	3750	228	460	126.2												
DUTY	HP	RPM	AMPS	VOLTS	HZ																										
CONT	200	1785	234	460	60																										
CONT	200	3750	228	460	126.2																										
CAT.NO.	ZDBRPM402004																														
SER.NO.																															
PH.	3																														
DESIGN NO.	L0116A																														
S.F.	1.0																														
ENCL MOD																															
	<table border="1"> <tbody> <tr> <td>SPEC. NO.</td> <td>P40L1301</td> </tr> <tr> <td>FR</td> <td>L 4022</td> </tr> <tr> <td>MAX SAFE SPEED</td> <td>3750</td> </tr> <tr> <td>TYPE</td> <td></td> </tr> <tr> <td>D.E. BRG.</td> <td>65BC03J30X</td> </tr> <tr> <td>O.D.E. BRG.</td> <td>65BC03J30X</td> </tr> </tbody> </table>	SPEC. NO.	P40L1301	FR	L 4022	MAX SAFE SPEED	3750	TYPE		D.E. BRG.	65BC03J30X	O.D.E. BRG.	65BC03J30X																		
SPEC. NO.	P40L1301																														
FR	L 4022																														
MAX SAFE SPEED	3750																														
TYPE																															
D.E. BRG.	65BC03J30X																														
O.D.E. BRG.	65BC03J30X																														
	<table border="1"> <tbody> <tr> <td>INSUL</td> <td>H</td> </tr> <tr> <td>AMB.</td> <td>40</td> </tr> <tr> <td>ENCL.</td> <td>TEAO-BC</td> </tr> </tbody> </table>	INSUL	H	AMB.	40	ENCL.	TEAO-BC																								
INSUL	H																														
AMB.	40																														
ENCL.	TEAO-BC																														
	MIN. AMB. 0																														

Parts List		
Part Number	Description	Quantity
WS286623	WS P40L1301	1.000 EA
RA282831	RA P40L1301	1.000 EA
000613006NS	RPM AC WITH CERTIFIED LOGO	1.000 EA
000692000FP	NP, WARNING LIFT INSTRUCTIONS	1.000 EA
000692000NH	LABEL DIRECTION AIR FL	1.000 EA
000692000VD	LABEL WARNING	1.000 EA
036170004EA	ROUND HEAD DRIVE SCREW	6.000 EA
422927001	C/D LABEL	1.000 EA
036000012HB	HHCS M6X12MM LONG PLATED	3.000 EA
036610008AB	METRIC LCKW M6 PLTD-G508	3.000 EA
604979002C	THERMBR - 440	1.000 EA
004824015A	GREASE POLYREX EM	0.900 LB
034693001AB	PPLG - G508- use 034692001AB	1.000 EA
034693001AB	PPLG - G508- use 034692001AB	1.000 EA
035000001A	ALFTG 1/8" 1610-BL	1.000 EA
035000001BB	GREASE FTG,GRS.IN	1.000 EA
036000016JB	HHCS M8-1.25X16MMPLTD-250	3.000 EA
036000020JB	HHCS M8-1.25X20L PLTD-250	3.000 EA
036100070KA	METRIC HSHCS	3.000 EA
036100080KA	M10-1.50X 80MM HXSOCHDCS	3.000 EA
036140001E	EYEBOLT	2.000 EA
036500013AB	HX NUT,ODE BRKT	4.000 EA
036500013AB	HX NUT,ODE BRKT	4.000 EA
036610009AB	MHSLW M8 SPL.PLTD-G508- BS	3.000 EA

<b>Parts List (continued)</b>		
<b>Part Number</b>	<b>Description</b>	<b>Quantity</b>
400638001AD	WAVEN - 400	1.000 EA
418150003A	GREASE FITTING CAP	2.000 EA
609830005AX	TBOLT 27.75 X .625	4.000 EA
702622008A	GRILL, PAINTED 440	1.000 EA
702623001E	THERMAL BARRIER 440 SUB PAINT	1.000 EA
702663002R	FAN 440 702663002A	1.000 EA
804812002A	BRKT,ODE,L400	1.000 EA
804813002A	BRKT,L400	1.000 EA
000613006NT	NAME PLATE IEC	1.000 EA
032018006CK	HHCS 3/8-16X3/4L PLATED	4.000 EA
033004018AB	THDRD	1.000 EA
033102012AB	NUT 1/4-20 PLATED	3.000 EA
034000012AB	WSHR 1/4 STD. PLATED	4.000 EA
034000014AB	WSH ID.406 OD.812 TH.065	4.000 EA
034017014AB	LCKW 3/8 STD. PLATED	4.000 EA
036000012JB	M8-1.25 X 12MM HXHDC	3.000 EA
036000016JB	HHCS M8-1.25X16MMPLTD-250	4.000 EA
036000016KF	HHCS M10 16MM BRASS	2.000 EA
036000020JB	HHCS M8-1.25X20L PLTD-250	4.000 EA
036000045JB	M8-1.25 X 45MM HXHCS	4.000 EA
036310010FB	RHMS TERM/BLK MTG	2.000 EA
036320008CB	M2.5 SCREW	4.000 EA
036500006AB	M4-0.7 METRIC HEX NUT	2.000 EA
036620009AB	M8 EXTERNAL LK WASHER	3.000 EA

Product Information Packet: ZDBRPM402004 - 200HP,1785RPM,3PH,N/AHZ,L4022,TEBC,FOOT,

410978010D	INLET SCREEN	1.000 EA
410978014A	INLET SCREEN	1.000 EA
415000103F	TLUG	1.000 EA
417733004D	GASKET CONDUIT BOX	1.000 EA
417733004E	GASKT	1.000 EA
418014004A	ADAPT 418014-4WCA	1.000 EA
418018074A	GROUND LABEL G100 METRIC 160 D.C.	3.000 EA
418025002A	I/ REDUCER E-Z-LOK 319-4-Comes in 10pkg	1.000 EA
418057169A	LKNUT CAMER	1.000 EA
418057381A	CONDUIT WASHER	1.000 EA
418057499A	PLATE	1.000 EA
422962126A	STUB SHAFT - 742501000	1.000 EA
607980192B	RF,BEI,HS35,TWISTLOCK	1.000 EA
610490001AF	1.5HP,3450//2850RPM,3PH,60//50HZ,56C,352	1.000 EA
611917002J	GASKET, NEOPRENE	1.000 EA
611965001A	WHEEL, BLOWER	1.000 EA
706310003R	CBOX MILL ENG/METRIC	1.000 EA
706313052A	BLOWER SCROLL	1.000 EA
804816019A	COVER	1.000 EA
000640000P	TAG WINDING THERMOST	1.000 EA
004824007K	SPECIAL PAINT	0.300 EA
034180024HA	KEY 5/8X5/8X3 L	1.000 EA

REL S.O.	-	VOLTS	460	ENCLOSURE	TEBC	WYE	CONN EQ	CKT OHMS	PER PHASE
FRAME	L4022	AMPS	227	MAX SAFE RPM	3750	(AT BASE RATING, 25 °C)			
HP	200	DUTY	CONT	IM (AMPS)	73	R1	.00965	X1	.0956
BASE SPEED	1785	S.F.	1.0	P.F. @NL/FL	.05/.88	R2	.00690	X2	.121
PHASE/HERTZ	3/60	AMB °C/INSUL	40/H	WK <sup>2</sup> (lb-ft <sup>2</sup> )	61			XM	3.53

**RATED FULL LOAD DATA**

	RPM	HP	TORQUE LB-FT	FUND VOLTS	FREQ-HZ	AMPS
BASE SPEED	1785	200	588	460	60	227
MAX SPEED	3751	200	280	460	126.2	231
MIN SPEED	0	0	588	460	6.48	227

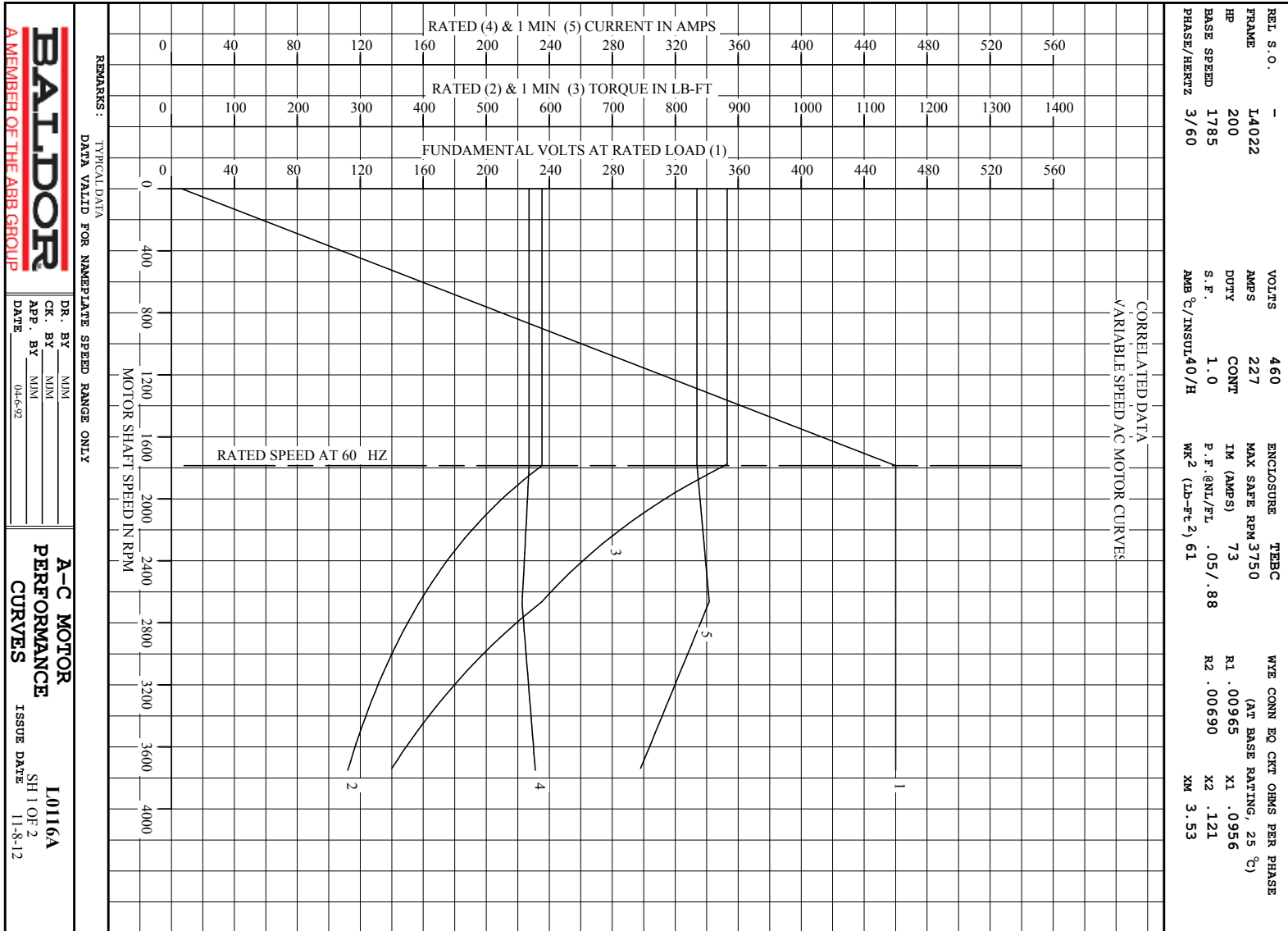
**LOAD PERFORMANCE AT BASE SPEED**

	RPM	HP	TORQUE LB-FT	FUND VOLTS	FREQ-HZ	AMPS
NO LOAD	1800	0	0	460	60	73.8
1/4	1796	50.0	146	460	60	92.9
1/2	1793	100	293	460	60	131
3/4	1789	150	441	460	60	177
FULL LOAD	1785	200	588	460	60	227
O/L	1777	299	883	460	60	334

REMARKS: TYPICAL DATA  
CORRELATED DATA

 <p><b>A MEMBER OF THE ABB GROUP</b></p>	DR. BY	MM	<p><b>A-C MOTOR</b></p> <p><b>PERFORMANCE</b></p> <p><b>DATA</b></p>
	CR. BY	MM	
	APP. BY	MM	
	DATE	04-6-92	

ISSUE DATE 11-8-12

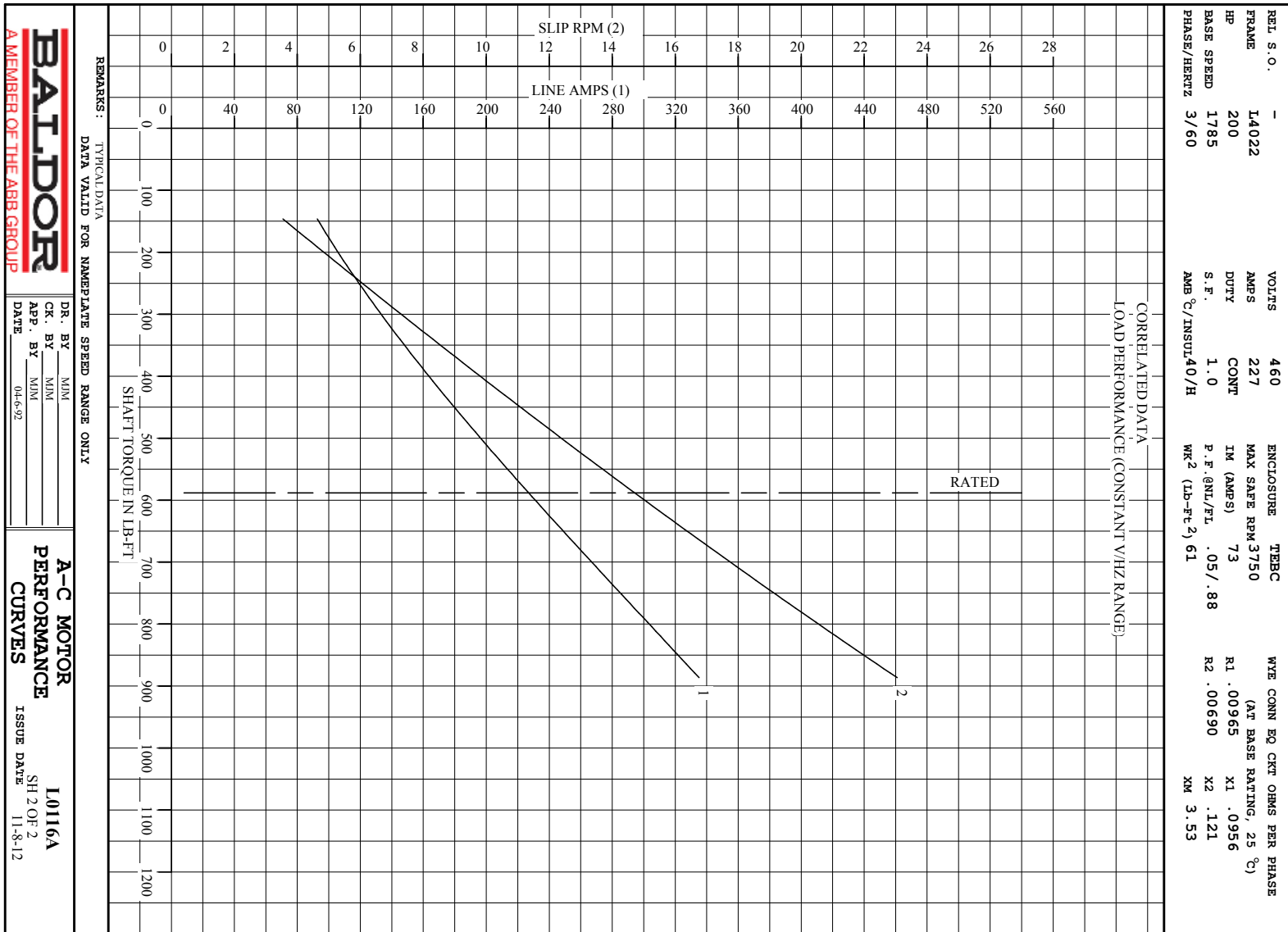


**BALDOR**  
A MEMBER OF THE ABB GROUP

DR. BY \_\_\_\_\_  
CR. BY \_\_\_\_\_  
APP. BY \_\_\_\_\_  
DATE 04-6-92

**A-C MOTOR**  
**PERFORMANCE**  
**CURVES**

**L0116A**  
SH 1 OF 2  
ISSUE DATE 11-8-12



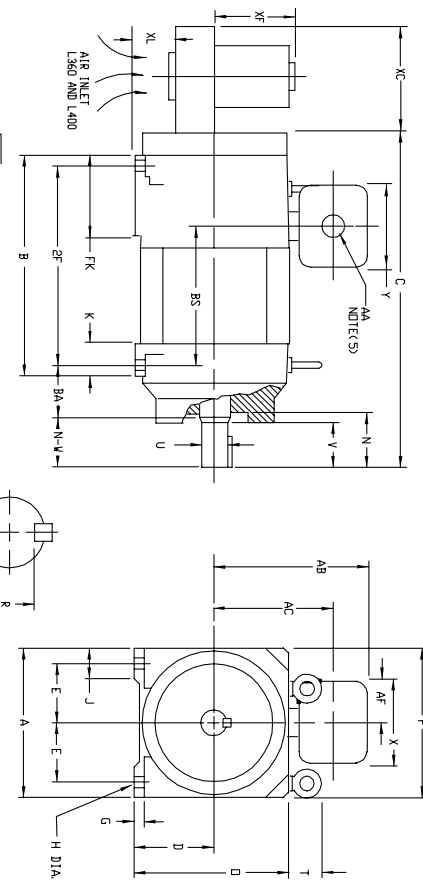
**BALDOR**  
A MEMBER OF THE ABB GROUP

DR. BY \_\_\_\_\_  
CR. BY \_\_\_\_\_  
APP. BY \_\_\_\_\_  
DATE 04-6-92

**A-C MOTOR**  
**PERFORMANCE**  
**CURVES**  
I01116A  
SH 2 OF 2  
ISSUE DATE 11-8-12

609994-001

VARIABLE SPEED ALTERNATING CURRENT MOTORS  
RPM AC  
ENCLOSURE: TOTALLY ENCLOSED MOUNTING: FOOT  
FRAMES L3281 THRU UL4046  
COOLING: FAN COOLED BLOWER COOLED AIR-OVER INLINE



DIMENSIONS ARE IN INCHES

FRAME	A	BC (1)	E	G	H	J	D	P	T	BA	K	FK
L3281 THRU L3292	15.50	8.00	6.25	.88	69	3.00	15.81	15.62	4.4	5.25	3.25	8.00
L3699 THRU UL3614	17.50	9.00	7.00	1.06	81	3.29	17.81	17.62	5.81	5.88	3.75	10.00
L4022 THRU UL4046	19.44	10.00	8.00	1.12	81	3.50	19.81	19.62	6.62	6.62	4.00	11.50

FRAME	METHOD OF DRIVE	C	B	BS	2F	N	N-V	UC2	V	RK37	SD	LGTH	XL	XC	XF	WT. LBS.
L3281	(4)	38.25	22.25	15.12	20.25	5.50	5.25	2.625	5.00	2.275	.625	4.00	1.69	---	---	840
L3292	(4)	41.00	25.00	17.88	23.00	5.50	5.25	2.625	5.00	2.275	.625	4.00	1.69	---	---	990
L3699	COUPLED	53.75	27.00	19.25	24.75	5.19	4.75	2.375	4.50	2.021	.625	3.00	5.19	10.12	7.00	1175
UL3699	COUPLED	37.50	27.00	19.25	24.75	6.94	6.75	3.375	6.25	2.880	.875	5.00	5.19	10.12	7.00	1225
UL3607	COUPLED	37.50	29.00	21.25	26.75	5.19	4.75	2.375	4.50	2.021	.625	3.00	5.19	10.12	7.00	1380
UL3698	COUPLED	39.50	29.00	22.25	27.75	5.19	4.75	2.375	4.50	2.021	.625	3.00	5.19	10.12	7.00	1575
UL3614	COUPLED	42.75	34.00	26.25	31.75	5.19	4.75	2.375	4.50	2.021	.625	3.00	5.19	10.12	7.00	1700
UL4022	COUPLED	44.50	34.00	26.25	31.75	6.94	6.75	3.375	6.25	2.880	.875	5.00	5.19	10.12	7.00	1750
UL4022	COUPLED	42.12	33.00	24.38	30.50	4.56	4.75	2.375	4.50	2.021	.625	3.00	5.69	12.00	10.31	1750
UL4034	COUPLED	45.12	36.00	27.38	33.50	4.56	4.75	2.375	4.50	2.021	.625	3.00	5.69	12.00	10.31	2150
UL4034	COUPLED	48.88	36.00	27.38	33.50	8.31	8.50	3.875	8.25	3.309	1.00	6.88	5.69	12.00	10.31	2200
UL4046	COUPLED	48.12	39.00	30.38	36.50	4.56	4.75	2.375	4.50	2.021	.625	3.00	5.69	12.00	10.31	2450
UL4046	COUPLED	51.88	39.00	30.38	36.50	8.31	8.50	3.875	8.25	3.309	1.00	6.88	5.69	12.00	10.31	2500

- (1) "D" DIMENSION WILL NOT BE EXCEEDED. SHIMS UP TO .03 INCHES IN THICKNESS
  - (2) ARE USUALLY REQUIRED FOR COUPLED OR GEARED MACHINES.
  - (3) "R" MARKS --- 4.00 - 5.00
  - (4) METHOD OF DRIVE COUPLED OR BELTED
  - (5) FOR TERMINAL BOX DIMENSIONS AA, AB, AC, AF, X & Y REFER TO BOX DIMS STD. 609997-1, IEC 60997-1, IEC 60997-2, IEC 60997-3, IEC 60997-10.
  - (6) DIMENSIONS ARE IN INCHES UNLESS OTHERWISE SPECIFIED.
- SHAFT OR DRIVE END DIMENSIONS NOT MOUNTED IN AIR INLET  
TERMINAL BOX CAN BE LOCATED ON SIDE IN F1 OR F2  
TERMINAL BOX CAN BE ROTATED IN 90 DEG.  
MOTOR WEIGHT MAY VARY SLIGHTLY FOR NON-STANDARD RATINGS AND/OR ACCESSORIES.  
IF MOUNTING CLEARANCE DETAILS ARE REQUIRED, CONSULT FACTORY.

FRAME \_\_\_\_\_ TYPE \_\_\_\_\_ ITEM \_\_\_\_\_ HP \_\_\_\_\_ RPM \_\_\_\_\_ PH \_\_\_\_\_ HZ \_\_\_\_\_ VOLTS \_\_\_\_\_  
 ORDER \_\_\_\_\_ SALES ORDER \_\_\_\_\_ APPROVED BY \_\_\_\_\_ DATE \_\_\_\_\_  
 100-466609

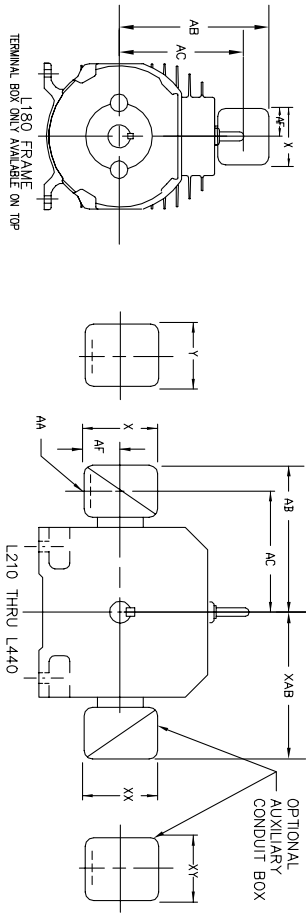
CUSTOMER IS RESPONSIBLE FOR DETERMINING THAT BALDOR'S PRODUCT WILL PERFORM SUITABLY IN THE INTENDED APPLICATION.

REV. DESC: ASSIGNED TO BUSLOAD	VERSION: 00	TDR: 000000486619
REV. LTR: -	REvised: 10:17:16 01/08/2009	BY: CONBAT
FILE: \RGG\00003\660		
MTL: -		

**Baldor • Dodge • Reliance**  
 DIM SHT L3281 THRU UL4046 RPM AC TEFC & BC AO INLINE FT MGT  
 SH 1 of 1

# RPM AC INDUSTRIAL ALTERNATING CURRENT MOTORS

STEEL, CAST IRON, MILL AND TERMINAL BOARD CONDUIT BOX DIMENSIONS  
NEMA FRAMES L180 thru L440 and IEC FRAMES DL112 thru DL280



DIMENSIONS ARE IN INCHES (mm)

STEEL TERMINAL BOX DIMENSIONS (MAXIMUM)						CAST IRON TERMINAL BOX DIMENSIONS (MAXIMUM)						
FRAME SIZE	MAX AMPS	AK(1)	AB	AC	AF	STANDARD SIZE	MAX AMPS	AK(2)	AB	AC	AF	
L180	40	1.38	8.62	6.94	2.25	4.50	L180	60	1	9.38	7.50	2.50
L210	75	2	9.38	7.50	2.81	5.62	L210	140	3	14.25	10.50	3.62
L250	160	2	12.75	9.19	4.25	8.44	L250	210	4	15.62	11.38	4.12
L300	4	14.62	10.50	5.38	10.56	9.00	L300	510	5	18.50	13.25	7.00
L360	5	18.38	13.25	6.50	12.10	14.62	L360	140	3	15.38	11.50	3.62
L400	2	13.75	10.63	4.25	8.44	7.63	L400	305	4	16.62	12.44	4.12
L440	5	19.50	14.31	5.38	10.56	9.00	L440	510	5	19.62	14.31	7.00
							L480	140	3	15.50	11.75	3.62
							L480	210	4	16.88	12.62	4.12
							L500	510	5	19.50	10.50	7.00
							L500	140	3	15.00	10.50	3.62
							L500	210	4	16.62	12.44	4.12
							L500	305	4	16.62	12.44	4.12
							L500	510	5	19.62	14.31	7.00
							L500	140	3	15.00	10.50	3.62
							L500	210	4	16.62	12.44	4.12
							L500	305	4	16.62	12.44	4.12
							L500	510	5	19.62	14.31	7.00
							L500	140	3	15.00	10.50	3.62
							L500	210	4	16.62	12.44	4.12
							L500	305	4	16.62	12.44	4.12
							L500	510	5	19.62	14.31	7.00
							L500	140	3	15.00	10.50	3.62
							L500	210	4	16.62	12.44	4.12
							L500	305	4	16.62	12.44	4.12
							L500	510	5	19.62	14.31	7.00

MILL CONDUIT BOX DIMENSIONS (MAXIMUM)					
FRAME SIZE	MAX AMPS	AA	AB	AC	AF
L210	160	(3)	10.78	8.41	3.50
L250	160	(3)	11.84	9.47	3.50
L280	160	(3)	12.75	10.75	3.50
L320	590	(3)	14.75	11.34	4.50
L360	590	(3)	15.47	12.06	4.50
L360	590	(3)	16.47	13.06	4.50
L400	590	(3)	18.00	15.00	4.50
L440	1260	(3)	27.38	19.88	6.06

IEC CONDUIT BOX DIMENSIONS WITH TERMINAL BOARDS (MAXIMUM)											
FRAME NEMA/IEC	AMP'S	AA	AB (mm)	AC (mm)	AF (mm)	X (mm)	Y (mm)	PART NUMBER	PART NUMBER	PART NUMBER	PART NUMBER
L180/UL112	85	<4>	9.38(239)	7.50(191)	2.81(72)	5.62(143)	6.12(156)	706320-5-A or 4-C	706320-5-A or 4-C	706320-5-A or 4-C	706320-5-A or 4-C
L210/UL132	100	--	10.77(274)	9.04(230)	3.74(95)	7.48(190)	7.48(190)	706310-56-A	706310-56-A	706310-225-R	706310-225-R
L250/UL160	160	--	11.63(296)	9.62(245)	4.41(112)	8.82(224)	8.82(224)	706310-56-B	706310-56-B	706310-225-R	706310-225-R
L300/UL180	160	--	12.95(329)	10.36(264)	3.74(95)	7.48(190)	7.48(190)	706310-56-A	706310-56-A	706310-225-R	706310-225-R
L360/UL200	160	--	13.58(344)	11.57(294)	4.41(112)	8.82(224)	8.82(224)	706310-56-B	706310-56-B	706310-225-R	706310-225-R
L400/UL250	400	--	19.09(485)	14.37(365)	6.20(158)	14.39(366)	14.39(366)	706310-63-B	706310-63-B	706310-63-B	706310-63-B
L440/UL280	1260	--	27.38(696)	19.88(505)	6.06(154)	18.50(470)	18.50(470)	706310-63-E	706310-63-E	706310-63-E	706310-63-E
L440/UL280	1300	--	30.38(772)	21.38(543)	12.44(316)	24.00(610)	24.00(610)	706310-360-A	706310-360-A	706310-360-A	706310-360-A

DEPT. AUXILIARY CONDUIT BOX DIMENSIONS (MAXIMUM)											
FRAME SIZE	XY	XY	XY	XY	XY	XY	XY	XY	XY	XY	XY
L210/UL132	7.48	4.25	6.02007-56-A	L210/UL132	10.88	8.00	8.00	8.00	706310-3-B		
L250/UL160	8.44	4.25	6.02007-56-A	L250/UL160	11.88	8.00	8.00	8.00	706310-3-B		
L300/UL180	9.12	4.25	6.02007-56-A	L300/UL180	12.62	8.00	8.00	8.00	706310-3-B		
L360/UL200	10.00	4.25	6.02007-56-A	L360/UL200	13.50	8.00	8.00	8.00	706310-3-B		
L400/UL250	11.00	4.25	6.02007-56-A	L400/UL250	14.50	8.00	8.00	8.00	706310-3-B		
L440/UL280	12.00	4.25	6.02007-56-A	L440/UL280	15.50	8.00	8.00	8.00	706310-3-B		
L440/UL280	13.12	4.25	6.02007-56-A	L440/UL280	16.62	8.00	8.00	8.00	706310-3-B		

(1) \*AF CONDUIT.  
(2) \*AF PIPE TAP.  
(3) \*CUSTOMER TO PROVIDE  
(4) 2" DN -5A OR 1" TAP DN -4C  
CONDUIT BOX CAN BE ROTATED  
360°. CONDUIT BOX MAY BE  
LOCATED FL, F2 OR F3 AS  
SPECIFIED

100-6671919

CUSTOMER IS RESPONSIBLE FOR DETERMINING THAT BALDOR'S PRODUCT WILL PERFORM SUITABLY IN THE INTENDED APPLICATION.

REV. DESC: ADD 1260 AMP L400, ADD 1300 AMP L440	TDR: 000000B04459
REV. LTR: A	VERSION: 01
FILE: \RGG\00003\688	REVISED: 10: 23: 58 06/18/2013
MTL: -	BY: RGGWT

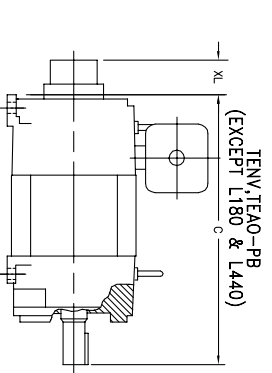
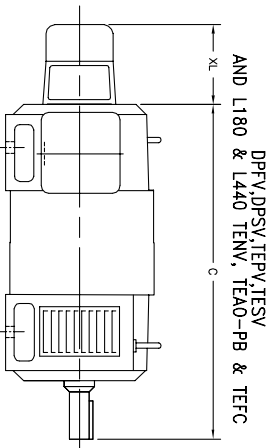


DIM SHT NEMA L180 THRU L440 & IEC DL112 THRU DL280

SH 1 of 1

**RPM AC TACHOMETER DIMENSIONS**  
 NEMA FRAMES L180 THRU L440  
 DIMENSIONS ARE IN INCHES

616779-010



TACH MODEL	XL	LBS.
ME27, M628	10.31	20
M727, M737		
M738		
HE20 (S CAND)	6.31	10
HE20 (E CAND)	9.06	10
TS-2014N	5.62	10
TS-2087N	9.94	15
RIM500	4.00	5
RL67	2.00	5
845H	6.27	10
H20	7.38	10
BET	9.25	10
M3, M4	3.62	10
ME65	3.38	10
M465	8.50	15
SL56	2.19	10
HS25 DR HS135	2.50	5
HS6	3.00	5
SL56	9.50	10
E25BA	2.75	10
AVTRON AV650	2.52	9
DYNAPAR EN42	3.30	6.5
DYNAPAR HS25R	3.30	2.0
AVTRON AV465	11.00	17.00
RAH35M	4.19	5.00

TACH MODEL	XL	LBS.
TAMAGAWA	6.5	5
TS5778		
X25	10.50	10
LE88D	10.25	10
STEGMANN	2.81	5
RIM1250	4.75	80
RIM600	9.62	25
SRM25	6.28	10
HS20, HS135	3.30	2
H20	4.25	15
TS5016N	3.62	10
HS36		
AV65	2.19	10
RAH335M	4.19	15
M3-56C	7.38	15
EN1325	6.50	15
ENM425	5.50	15
RDM486	3.25	10
HD25	5.62	10
AVTRON AV67	4.89	5
AV96	2.00	5
HS138	3.00	5
SFV/SFM60	3.00	5
HS45	3.12	10
SFV/SFM50	4.00	10

TACH MODEL	XL	LBS.
TS-5008N	5.88	10
TS-5013N		
TS-5035N		
TS-2014N	4.31	20
TS-2087N	8.62	15
RD-120	.38	5
625/845H	6.50	10
RD-62	8.25	10
TS-2151	1.88	5
H20	5.88	10
RL67	1.56	5
RIM 8500	3.50	20
SL-56	3.00	5
ME65	3.50	20
HS6	1.12	10
HS6 DR HS135	1.12	5
M3 M4	1.38	10
SL56	1.38	15
M3 56C-MIG	7.12	15
M465	7.12	15
AVTRON AV650	2.54	9
RAH35M	3.56	5

TACH MODEL	XL	LBS.
RA55	2.25	10

SEE MOTOR DIMENSION SHEET FOR "C" DIMENSION

SEE MOTOR DIMENSION SHEET FOR "C" DIMENSION

END OF MOTOR WITHOUT TACH

TEAO-BC

END OF MOTOR WITHOUT TACH

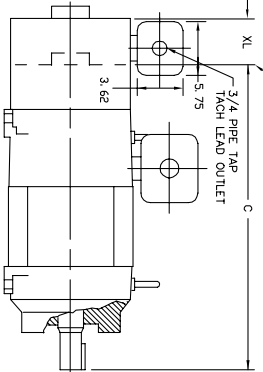
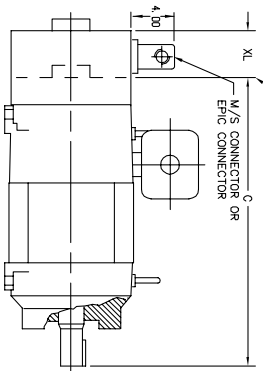


FIG. 1

FIG. 2

TACH MODEL	STANDARD CONNECTION PER	X/Y CONNECTION PER	LBS.	XL PER FRAME SIZE
TS-5008N	FIG. 1	FIG. 2	20	L180
TS-5013N				L210
TS-5035N				L250
TS-2014N/845H	FIG. 1	FIG. 2	25	L280
TS-2151	FIG. 1	FIG. 2	10	L320
H20	FIG. 1	FIG. 2	15	L360
RL67	FIG. 1	FIG. 1	10	L400
SL-56	FIG. 1	FIG. 1	10	L400
HS35, HS135, HS138	FIG. 1	FIG. 2	15	L400
AVTRON V5-HS	FIG. 1	FIG. 2	15	L400
AVTRON AV56	FIG. 1	FIG. 2	15	L400
AVTRON HS45	FIG. 1	FIG. 2	15	L400

SEE MOTOR DIMENSION SHEET FOR "C" DIMENSION

010-667919

CUSTOMER IS RESPONSIBLE FOR DETERMINING THAT BALDOR'S PRODUCT WILL PERFORM SUITABLY IN THE INTENDED APPLICATION.

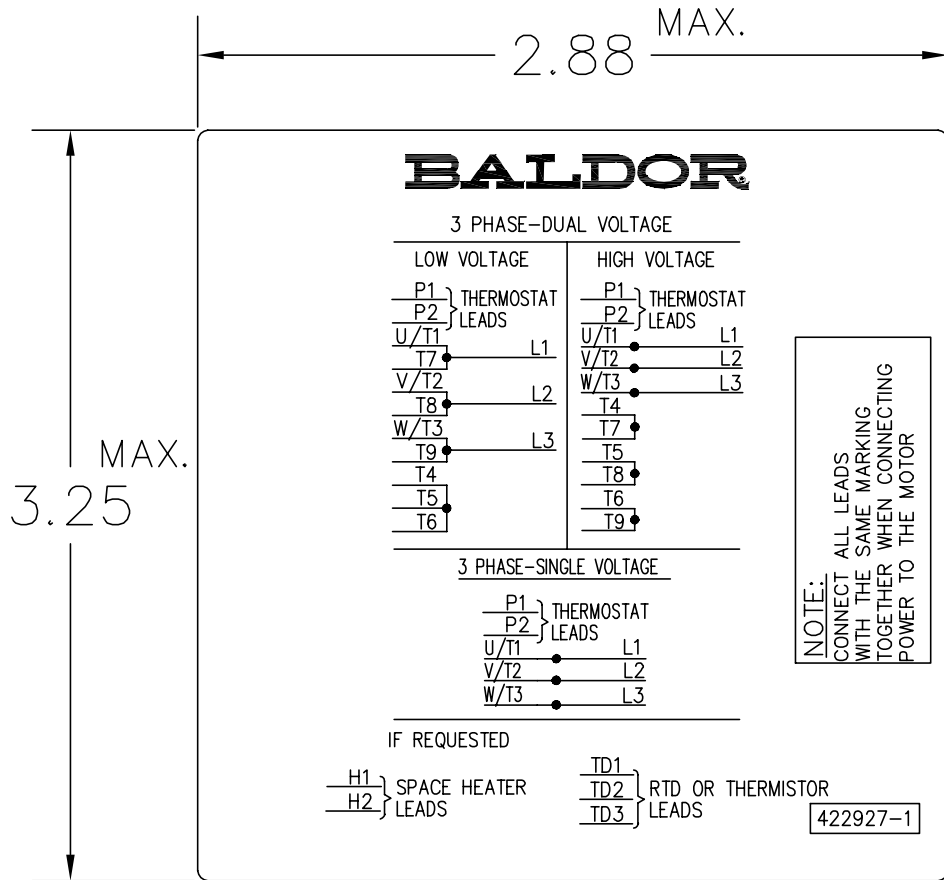
REV. DESC: ADD AVTRON HS45 TO TEAO-BE (B365302)	VERSION: 18	TDR: 000000873222
REV. LTR: T	REVISD: 11: 32: 55 09/25/2014	BY: RGGWT
FILE: \RGG\00003\689		
MTL: -		

**BALDOR**

DIM SHT TACH DIM NEMA L180 THRU L440

SH 1 of 1

422927-001



NOTE:  
DATA TO BE SIZED  
SO THAT IT FITS INTO  
MATERIAL DECAL  
DIMENSIONS. MAKE  
LETTERS & NUMBERS  
AS LARGE AS POSSIBLE.

MATERIAL: CERAMATIC DGF-P4  
PERMA GRIP ADHESIVE

ALL LETTERS, NUMBERS  
AND LINES TO BE BLACK  
ON WHITE BACKGROUND.

422927-001

REV. DESC: CHANGE BACKGROUND COLOR FROM GOLD TO WHITE		
REV. LTR: B	VERSION: 02	TDR: 000000788708
FILE: \RGG\00000\203	REVISED: 08:09:29 03/04/2013	
MTL: -	BY: RGGWT	

**BALDOR**

EXTERNAL CONNECTION LABEL

SH 1 of 1

Marketing maintained PDF of MN406:

<http://www.baldor.com/support/Literature/Load.ashx/MN406?ManNumber=MN406>