

# SLIDE RAIL COUPLING SRCH-2

To be used with  
BGPH series pumps.



## LOCATION

This SRCH-2 is designed for wet wells, tanks, or lift stations where it is necessary to remove a pump from service and reinstall the pump without maintenance personnel entering the pit to unbolt the pump flanges.

## FEATURES

- ▶ 2" flange, horizontal pump connection.
- ▶ 2" NPT vertical discharge.
- ▶ 1¼" stainless steel guide rails (provided by installer).
- ▶ Stress-free rail system.
- ▶ Durable cast iron base and lift-out flange.
- ▶ Stainless steel pump adapter and guide plate.

## STATIONARY ELBOW

Cast iron ASTM A-48 class 30.

## MOVABLE FITTING

Ductile iron ASTM A-536.

## GUIDE RAIL CAP

**Bracket:** 304 stainless steel.

**Plugs:** ductile iron ASTM A-536-84.

## HARDWARE

304 series stainless steel.

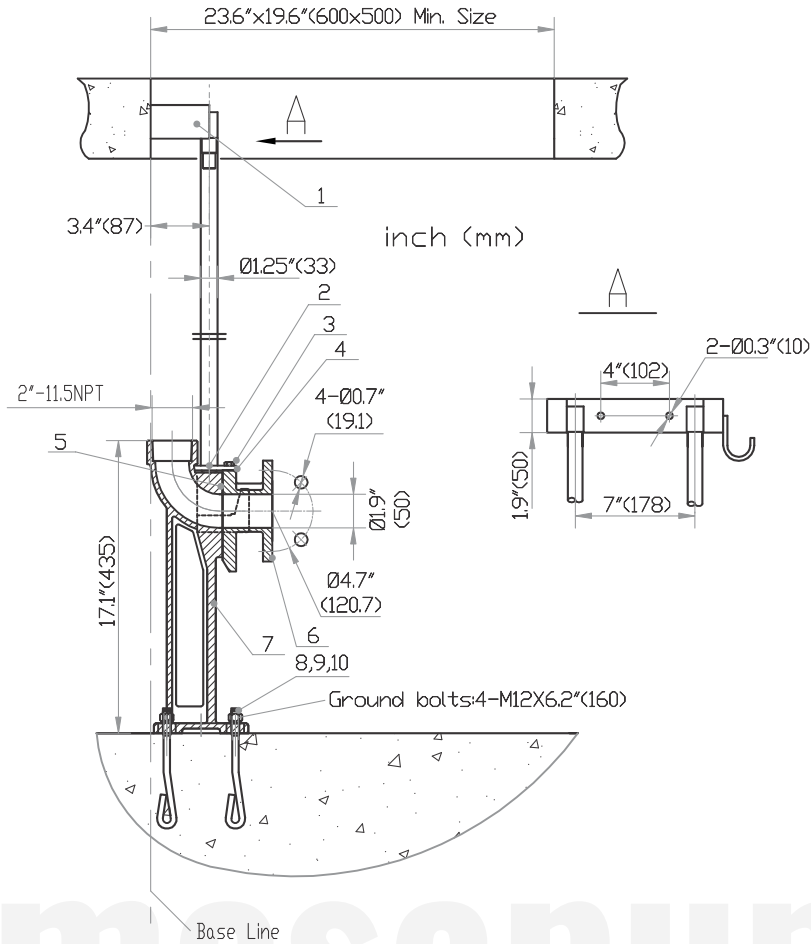
## O-RINGS

Buna-N, 70 ±5 Duro.

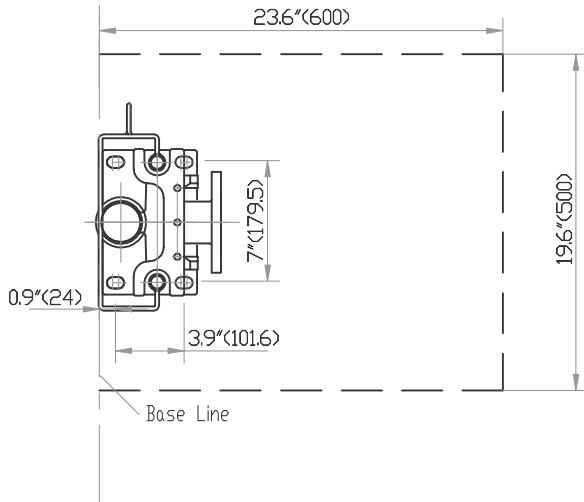
## PAINT

Air dry enamel, water based.

inch [mm]



Location and size for ground bolts:



ITEM	QTY.	DESCRIPTION	MATERIAL
1	1	UPPER GUIDE BRACKET	SST
2	2	DOWEL PIN	SST
3	3	SCREW HXHD M8 x 16	SST
4	1	LOWER GUIDE PLATE	SST
5	1	O-RING	BUNA
6	1	PULL OUT FLANGE	IRON
7	1	BASE ELBOW	IRON
8	4	NUT M16	SST
9	4	WASHER LOCK 16	SST
10	4	ANCHOR BOLT M16 x 220	SST

MODEL	PART No.	SIZE	RAILS	COUPLING	WEIGHT (pounds)
SRCH200	-	2"	1 1/4"	w/ upper guide bracket	46.3

SPECIFICATIONS

barmesapumps