



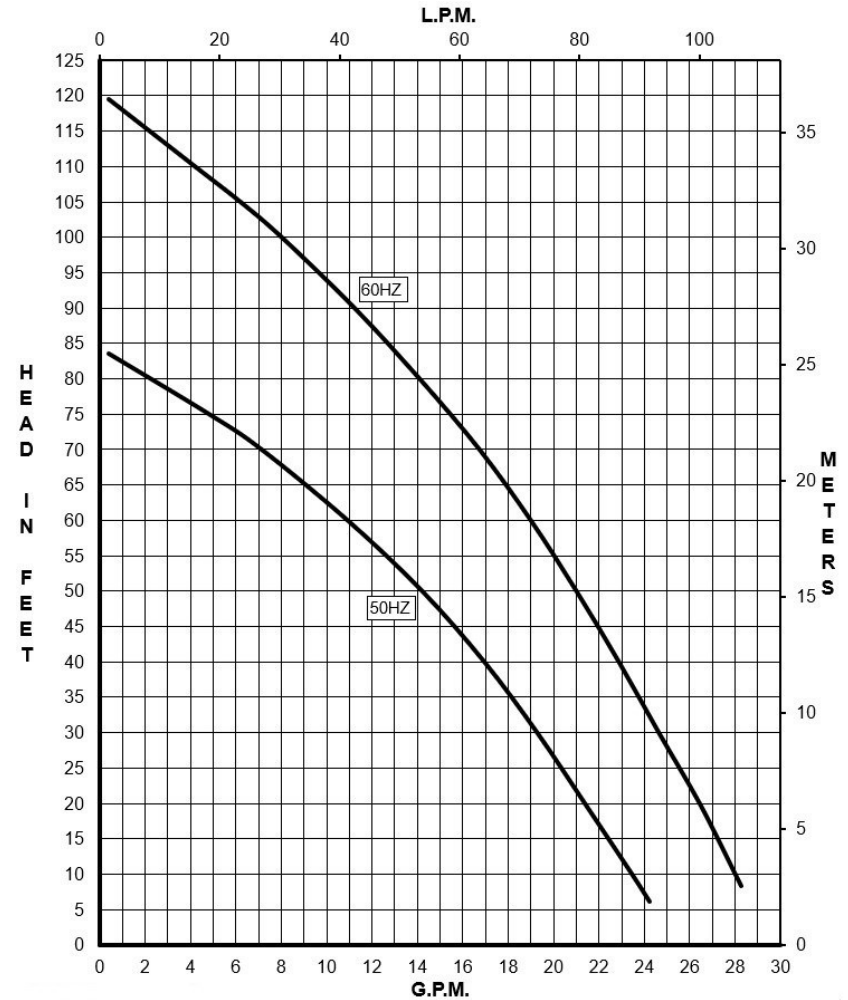
MARCH PUMPS

1819 PICKWICK AVE., GLENVIEW, IL 60026-1306, U.S.A
 PHONE: (847) 729-5300 - FAX: (847) 729-7062
 WWW.MARCHPUMP.COM

DESCRIPTION & OPERATION: TE-4MSR-MD is a centrifugal magnetic drive multi-stage pump. See the parts list for a breakdown of parts. Pumps are not self-priming, lack a suction lift, and thus require a flooded suction. Pumps cannot be run dry because the impeller requires the liquid being pumped for lubrication. The direction of the motor rotation should be clockwise when facing the inlet of the pump. For liquids with a specific gravity greater than water, have a higher viscosity, or for elevated temperatures a trimmed impeller may be necessary. For application assistance, contact March Pump.

ELECTRICAL: Configurations: 1 Phase 115/230 Volt 60Hz, 110/220 Volt 50Hz 3 Phase 230/460 Volt 60Hz, 190/380 Volt 50Hz
 Motors are totally enclosed fan cooled and are either CSA or U.L. listed as well as rated for continuous operation. All motors have a conduit box for electrical connections.

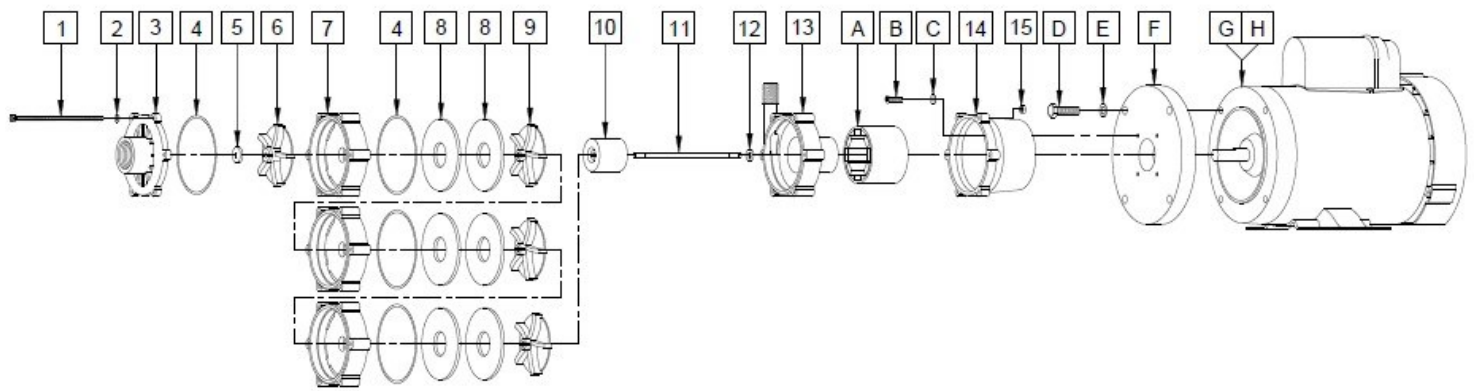
TE-4MSR-MD



| | | |
|------------------------|-----|--------------------------|
| Specifications | | TE-4MSR-MD |
| Product | 1Ph | 1275-0030-0100 |
| | 3Ph | 1275-0026-0100 |
| Inlet-Outlet | | 1" FPT BSP- 1/2" MPT BSP |
| Max Internal Pressure | | 87PSI (600 kPa) |
| Max Liquid Temperature | | 190F/87C |

| Model | 60Hz | | | | | | | | | | | 50Hz | | | | | | | | | | | Packed Weight |
|------------|----------|-----|----------|------|------|------------|---------|-----------|-----|------|------|----------|-----|----------|------|------|------------|---------|-----------|----|------|------|---------------|
| | Max Flow | | Max Head | | | Electrical | | | | | | Max Flow | | Max Head | | | Electrical | | | | | | |
| | GPM | LPM | FT | PSI | M | Ph | Voltage | AMPS | HP | kW | RPM | GPM | LPM | Feet | PSI | M | Ph | Voltage | AMPS | HP | kW | RPM | Pounds |
| TE-4MSR-MD | 28 | 105 | 120 | 51.9 | 36.5 | 1 | 115/230 | 13.2/6.6 | 1.5 | 1.11 | 3450 | NA | NA | NA | NA | NA | NA | NA | NA | NA | NA | NA | 46.5 |
| TE-4MSR-MD | 28 | 105 | 120 | 51.9 | 36.5 | 3 | 230/460 | 3.87/1.75 | 1.5 | 1.11 | 3450 | 24 | 90 | 83.5 | 36.1 | 25.4 | 3 | 190/380 | 2.97/1.49 | 1 | 0.75 | 2850 | 43 |

All specifications & data are based on pumping water & are intended as a guideline only. Specifications may vary with different motors.



NOTE: When attaching the Drive Magnet to the motor shaft, position the face of the Drive Magnet 3/16 inch below the face of the Motor Bracket.

TE-4MRS-MD

NOTE: Contact Factory for other materials and/or parts not listed.

Special voltage motors are available upon special order.

Materials in Contact with Solution: Ryton, Ceramic, Viton

| Item | Part Number | QTY REQ | Description |
|------|----------------|---------|---|
| 1 | 1275-0033-1000 | 6 | M5 Rod with Nut |
| 2 | 1275-0034-1000 | 6 | M5 Washer |
| 3 | 1275-0042-1000 | 1 | Cover with 1" FPT BSP Threaded Inlet (Ryton) |
| 4 | 1275-0011-1000 | 4 | 87 mm ID x 3 mm CS "O" Ring (Viton) |
| 5 | 1275-0012-1000 | 1 | 3/4" Diameter Front Thrust Washer (Ceramic) |
| 6 | 1275-0035-1000 | 1 | Front Impeller (Brown Ryton) |
| 7 | 1275-0036-1000 | 3 | Stage Housing (Ryton) |
| 8 | 1275-0037-1000 | 6 | Disk (Ryton) |
| 9 | 1275-0038-1000 | 3 | Rear Impeller (Ryton) |
| 10 | 1275-0039-1000 | 1 | Encapsulated Impeller Magnet (Ryton) |
| 11 | 1275-0032-1000 | 1 | Shaft (Ceramic) |
| 12 | 1275-0019-1000 | 1 | 1/2" Diameter Rear Thrust Washer (Ceramic) |
| 13 | 1275-0040-1000 | 1 | Rear Housing with 1/2" MPT BSP Threaded Outlet (Ryton) |
| 14 | 1275-0021-1000 | 1 | Motor Bracket (Polypropylene) |
| 15 | 1275-0022-1000 | 6 | M5 Hex Nut |
| A | 1275-0004-0000 | 1 | Drive Magnet |
| B | 0150-0050-1000 | 4 | #10-32 x 3/4" Long Screw (Stainless) |
| C | 0150-0051-1000 | 4 | #10 Washer (Stainless) |
| D | 0161-0042-1000 | 4 | 3/8"-16 x 1-1/4" Long Screw (Stainless) |
| E | 0155-0019-1000 | 4 | 3/8" ID x 5/8" OD Washer (Stainless) |
| F | 1275-0001-1000 | 1 | Spacer (Plastic) |
| G | 0155-0199-1000 | 1 | Motor, TEFC, 1 Phase, 1.5HP, 115-208/230V, 60Hz |
| H | 0155-0103-1000 | 1 | Motor, TEFC, 3 Phase, 1.5HP, 208-230/460V 50Hz, 190/380V 50Hz |
| WEK | 1275-0041-0100 | 1 | Wet End Kit and Motor Bracket (Items 1-14) |

LIMITED WARRANTY: March pumps are guaranteed only against defects in workmanship or materials for a period of one year from date of manufacture pumping water. For the complete warranty and to register online go to www.marchpump.com/warranty-registration

1275-0008-1100

Order Online: www.PumpCatalog.com