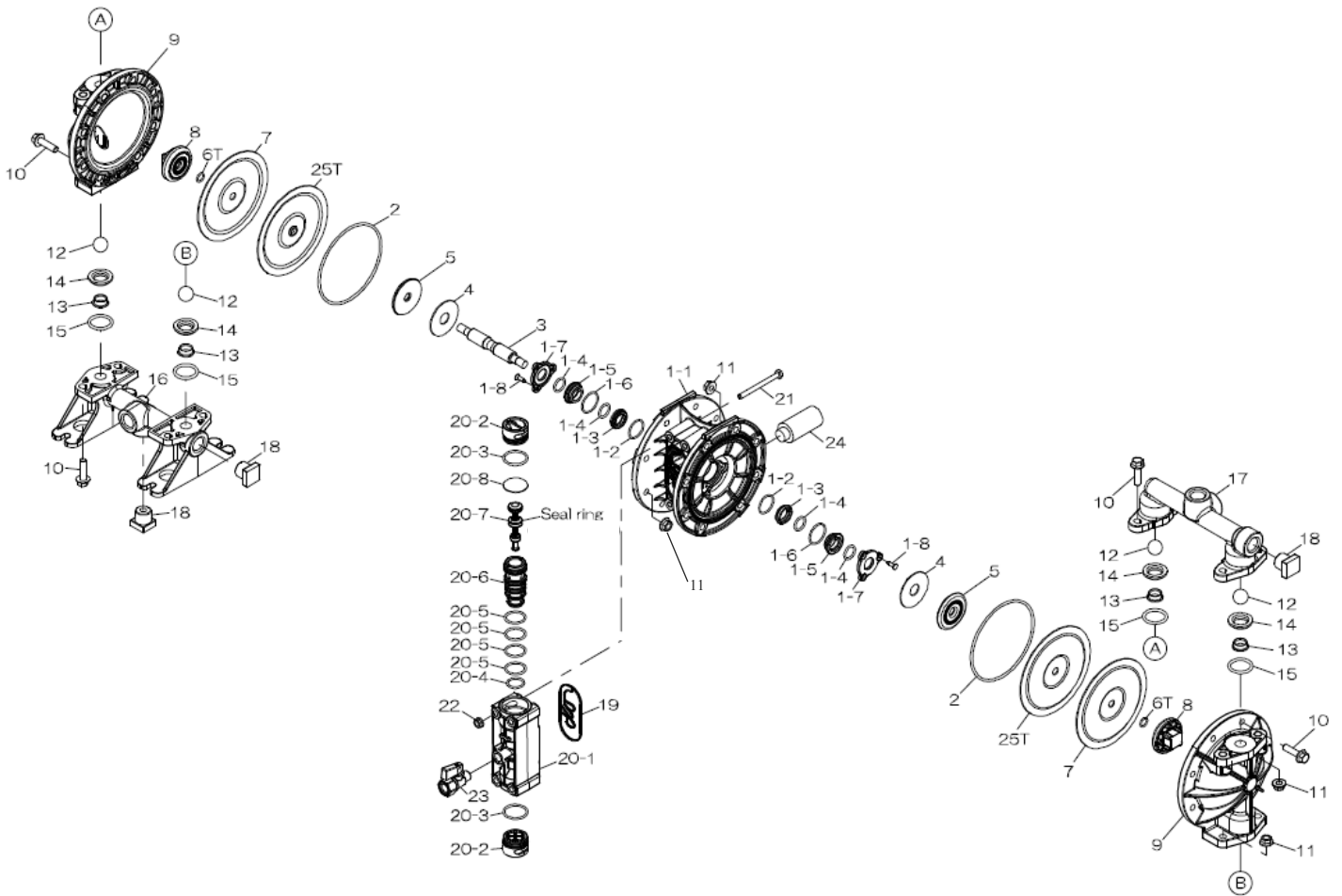
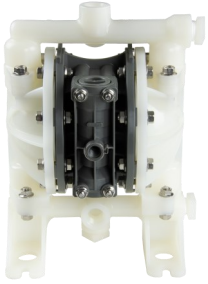
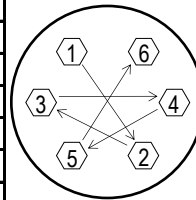


Air Operated Double Diaphragm Pump



Air Operated Double Diaphragm Pump

REF.	PARTS No.	DESCRIPTION	QTY	REORDER
1	805217	BODY ASSY (G15P/V) NPT	1	
1-1	773410	BODY (G15P/V) NPT	1	
1-2	686893	O RING	2	
1-3	773385	GUIDE BUSH A	2	
1-4	640015	O RING	4	
1-5	780301	GUIDE BUSH	2	
1-6	684900	O-RING	2	
1-7	773384	GUIDE BUSH STOPPER	2	
1-8	686894	TAPPING SCREW	6	
2	640147	O RING	2	
3	717100	CENTER ROD SUS	1	
4	773278	CUSHION	2	
5	716923	CENTER DISK (INNER)	2	
6T	643007	O RING	2	
7	773276	DIAPHRAGM G15 (PTFE)	2	
8	773400	CENTER DISK (G15V) (OUTER)	2	
9	780304	OUT CHAMBER (G15V)	2	
10	686892	BOLT W/ FLANGE	24	
11	686032	NUT W/ FLANGE M8X1.25	24	
12	773423	BALL (PTFE)	4	
13	773432	SEAT B (G15V)	4	
14	773431	SEAT A (G15V)	4	
15	643025	O RING	4	
16	780309	MANIFOLD B NPT	1	
17	773404	MANIFOLD A NPT	1	
18	773402	PLUG NPT	3	
19	773407	GASKET	1	
20	805210	VALVE BODY ASSY	1	
20- 1	833226	VALVE BODY NPT	1	
20- 2	773383	CAP	2	
20- 3	683112	O RING	2	
20- 4	685453	O RING	1	
20- 5	685276	O RING	4	
20- 6	780302	SLEEVE	1	
20- 7	805208	SPOOL ASSY	1	
20- 8	773428	CUSHION	1	
21	621115	BOLT (SUS304)	4	
22	684086	FLANGE NUT SERRATED	4	
24	686762	SILENCER NPT 3/8"	1	
25T	773447	DIAPHRAGM BACKUP G15TP	2	
KIT	KG15-VT	LIQUID END		
KIT	KG15-AM-P	AIR MOTOR		



Tightening torque for center rod and out chambers.
Center Rod 177 in-lbf {20 N-m}
Out Chambers 89 in-lbf {10 N-m}

Tightening torque for manifold retainer bolts.
G15VT 89 in-lbf {10 N-m}

General Tools:

- Socket wrench - 10mm, 12mm
- Hexagonal box wrenches - 5mm
- Open-end wrench - 12mm, 22mm
- Phillips head screw driver
- Snap ring pliers

Special Tools:

- Sleeve remover (713148)

Miscellaneous:

- Assembly Oil—turbine oil none additional class 1 (equivalent to ISO VGA32 grade)
- Urea grease grade (NLGI) No. 2
- Thread locking agent (equivalent to LOCTITE® 243)

Customer Notes

Model #: _____
Description: _____
Serial #: _____
Date Installed: _____
Department Location: _____
Tag/Project: _____