

# **BALDOR**® • ***RELIANCE***

## **Product Information Packet**

# **CESWDM3559T**

**3HP,3475RPM,3PH,60HZ,145TC,3540M,TEFC,F1**

Part Detail							
Revision:	N	Status:	PRD/A	Change #:		Proprietary:	No
Type:	AC	Prod. Type:	3540M	Elec. Spec:	35WGR903	CD Diagram:	CD0005
Enclosure:	TEFC	Mfg Plant:		Mech. Spec:	35SS628	Layout:	35LYSS628
Frame:	145TC	Mounting:	F1	Poles:	02	Created Date:	02-17-2010
Base:	RG	Rotation:	R	Insulation:	F	Eff. Date:	05-24-2016
Leads:	9#18					Replaced By:	
Literature:		Elec. Diagram:					

Nameplate NP1669L										
CAT.NO.	CESWDM3559T									
SPEC.	35SS628R903G1									
HP	3									
VOLTS	208-230/460									
AMP	7.8-7.2/3.6									
RPM	3475									
FRAME	145TC					HZ	60		PH	3
SER.F.	1.15					CODE	M		DES	A
NEMA-NOM-EFF	86.5					PF	91		CLASS	F
RATING	40C AMB-CONT									
CC	010A					USABLE AT 208V				
DE	6205					ODE	6203			
ENCL	TEFC					SN				
BLANK										

Parts List		
Part Number	Description	Quantity
SA191065	SA 35SS628R903G1	1.000 EA
RA178729	RA 35SS628R903G1	1.000 EA
34FN3002A01SP	EXTERNAL FAN, PLASTIC, .637/.639 HUB W/	1.000 EA
S/P107-000-001	SUPER E PROC'S-FS, WS & CK PLTS	1.000 EA
35CB3010A01MU	CONDUIT BOX, BALL BURNISHED, MACHINED -	1.000 EA
35GS1022A03	GASKET BOX .125 THK WHITE NEOPRENE	1.000 EA
51XN1032A08	10-32 X 0.500 HX WS SL SR ZN	2.000 EA
NS2512A01	INSULATOR, CONDUIT BOX X	1.000 EA
11XW1032G06	10-32 X .38, TAPTITE II, HEX WSHR SLTD U	1.000 EA
35EP3100M08MU	FREP TEFC 203 BRG NO GRSSR, BALL BURNISH	1.000 EA
HW4500A33	1/8 NPT STAINLESS,HOLO-KROME #13002,PRES	3.000 EA
HW5100A03SP	WAVY WASHER (W1543-017)	1.000 EA
35EP3300A75MU	PU E.P., CAST-FACE MTD-56C-205 BRG(BALL	1.000 EA
HW4500A33	1/8 NPT STAINLESS,HOLO-KROME #13002,PRES	3.000 EA
HW4606A02	JM CLIPPER/SEAL (LWE-0938-1624-AL23)	1.000 EA
12XN1032S20	10-32 X 1-1/4 HEX M.S. , STAINLESS STEEL	2.000 EA
HA1049A01	DUBO LOK WASHER SIZE 10 (NYLON LOCK SEAL	2.000 EA
HA1049A01	DUBO LOK WASHER SIZE 10 (NYLON LOCK SEAL	4.000 EA
35FH4005A53	IEC FH NO GREASER (CLEAN ONLY)	1.000 EA
11XW1032S06	10-32 X .38, TAPTITE II, HEX WSHR SLTD U	3.000 EA
HW4600B39SP	V-RING SLINGER 0.550 X 0.790 X .18 VITON	1.000 EA
HW2502D13	SS KEY, 3/16 SQ X 1.375	1.000 EA
HA7000A01	KEY RETAINER 7/8" DIA SHAFT	1.000 EA
35CB4523	LIPPED CB LID #304 STAINLESS - CLEANED	1.000 EA

<b>Parts List (continued)</b>		
<b>Part Number</b>	<b>Description</b>	<b>Quantity</b>
35GS1030A02	35 GS FOR CB LID - WHITE NEOPRENE	1.000 EA
59XW0832S07	TAPTITE II,HEX WSHR UNSLTD SER,410 S.S.,	4.000 EA
MJ5001A02	732 CL SEALANT 3 OZ DIXIE BEARING 289100	0.001 EA
85XU0407S04	4X1/4 U DRIVE PIN STAINLESS	2.000 EA
LB1164	LABEL,WARNING AND DRAIN	1.000 EA
HA5027A04	HA4054 T-DRAIN X2 BAGGED	1.000 EA
HA5027A04	HA4054 T-DRAIN X2 BAGGED	1.000 EA
MJ1000A02	GREASE, POLYREX EM EXXON (USe 4824-15A)	0.050 LB
HA3100S26	THRUBOLT 10X32 X 10.875	4.000 EA
LC0005	CONN.DIA.,TY M,9-LD,DUAL VOLT,REVERSING	1.000 EA
NP1669L	SS WD SUPER-E UL CSA-EEV PREM REV MTG	1.000 EA
36PA1000	PKG GRP, PRINT PK1016A06	1.000 EA
MN416A01	TAG-INSTAL-MAINT no wire (1200/bx) 11/14	1.000 EA

**AC Induction Motor Performance Data**

Record # 36589 - Typical performance - not guaranteed values

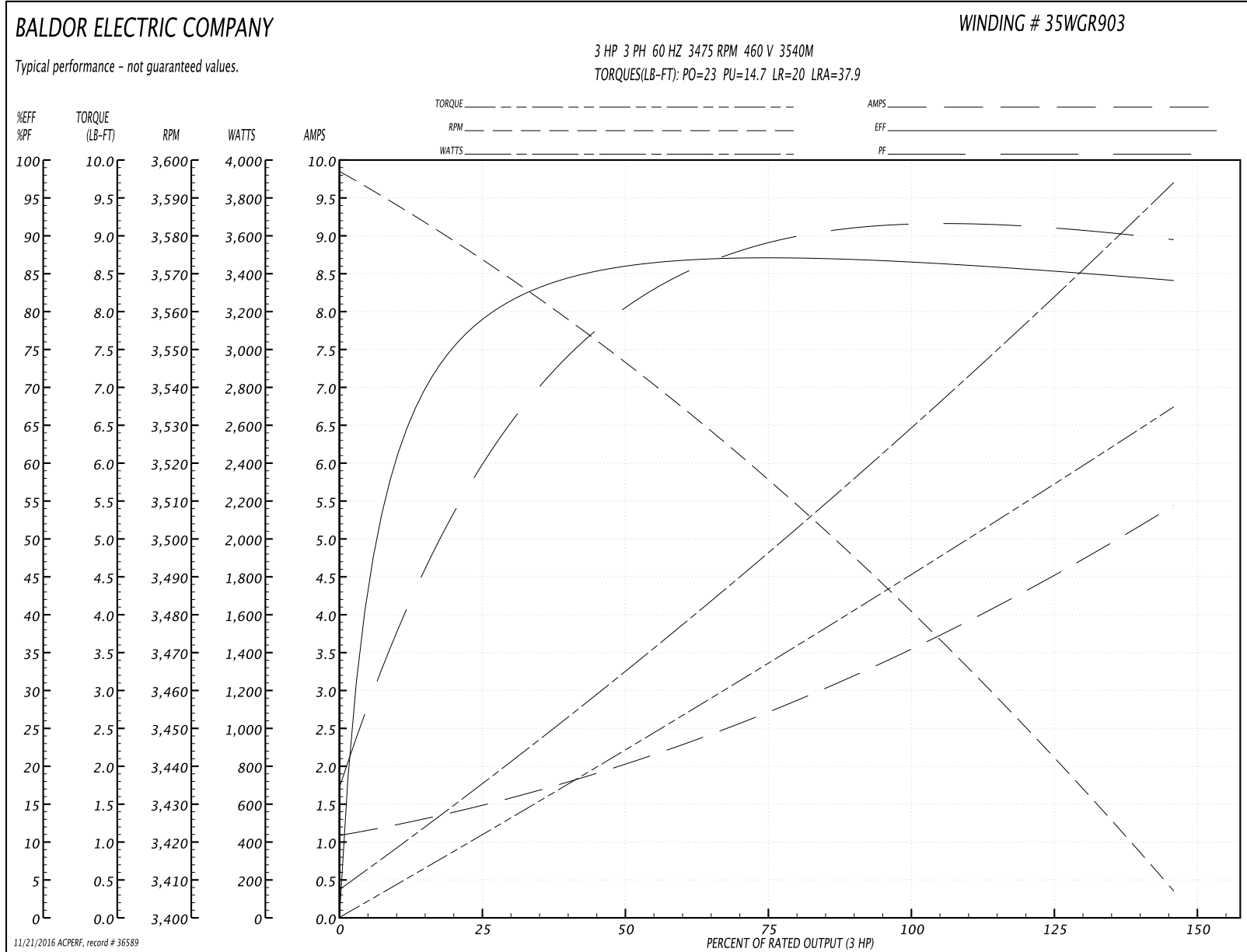
<b>Winding:</b> 35WGR903-R004	<b>Type:</b> 3540M	<b>Enclosure:</b> TEFC
-------------------------------	--------------------	------------------------

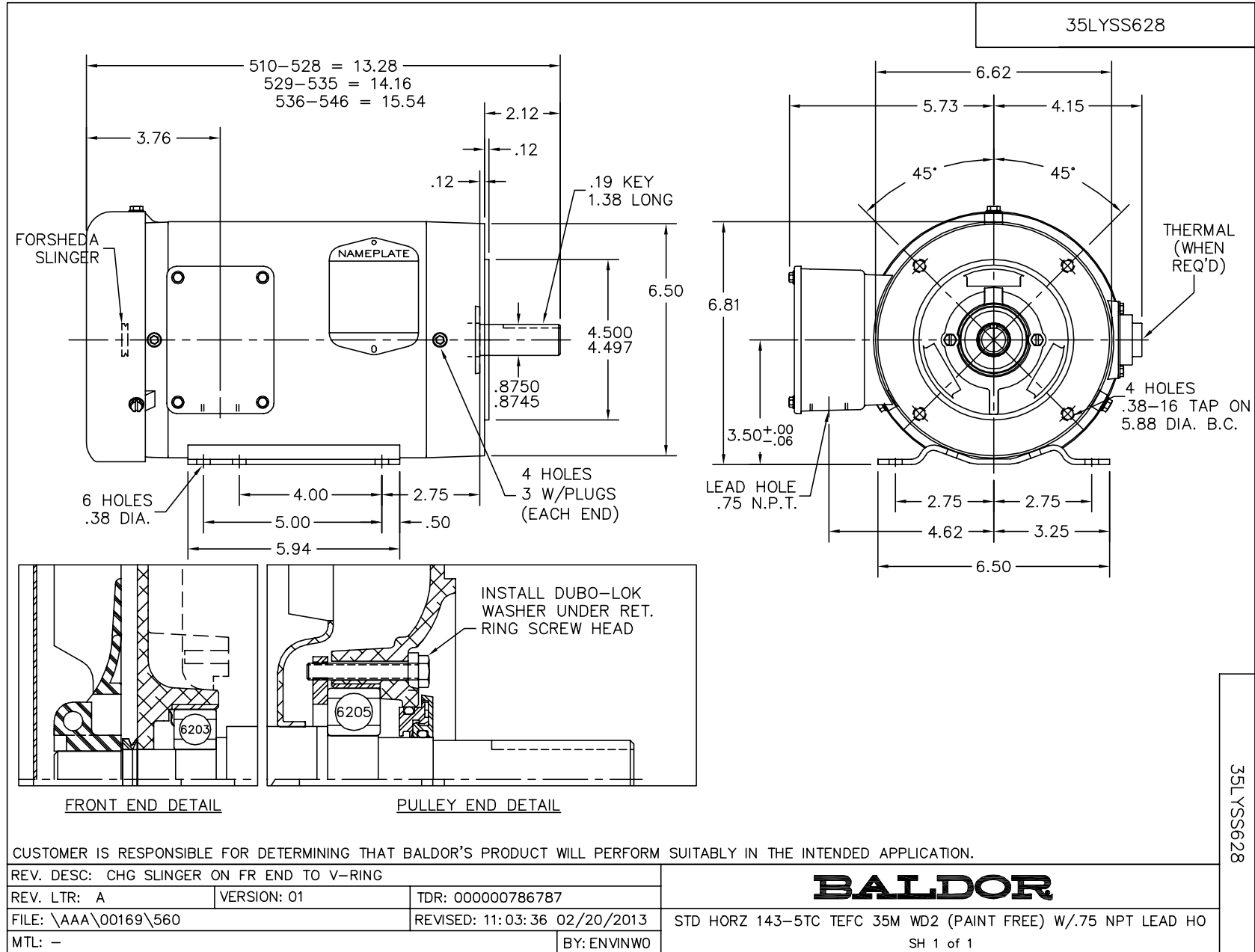
Nameplate Data				460 V, 60 Hz: High Voltage Connection	
Rated Output (HP)	3			Full Load Torque	4.5 LB-FT
Volts	208-230/460			Start Configuration	direct on line
Full Load Amps	7.8-7.2/3.6			Breakdown Torque	23 LB-FT
R.P.M.	3475			Pull-up Torque	14.7 LB-FT
Hz	60	Phase	3	Locked-rotor Torque	20 LB-FT
NEMA Design Code	A	KVA Code	M	Starting Current	37.9 A
Service Factor (S.F.)	1.15			No-load Current	1.11 A
NEMA Nom. Eff.	86.5	Power Factor	91	Line-line Res. @ 25°C	4.05 Ω
Rating - Duty	40C AMB-CONT			Temp. Rise @ Rated Load	46°C
S.F. Amps				Temp. Rise @ S.F. Load	55°C
				Locked-rotor Power Factor	44
				Rotor inertia	0.111 LB-FT <sup>2</sup>

Load Characteristics 460 V, 60 Hz, 3 HP

% of Rated Load	25	50	75	100	125	150	S.F.
Power Factor	63	81	89	91	91	90	91
Efficiency	78.7	85.6	87	86.9	85.7	83.9	86.2
Speed	3571	3544	3515	3484	3447	3405	3462
Line amperes	1.45	2.05	2.75	3.54	4.42	5.45	4.07

Performance Graph at 460V, 60Hz, 3.0HP Typical performance - Not guaranteed values

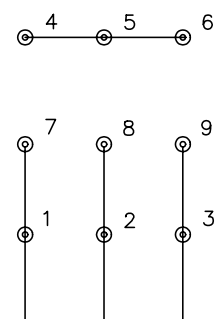




CD0005

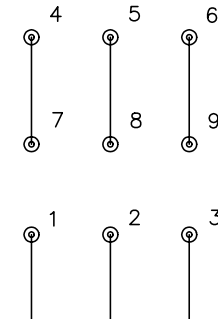


LOW VOLTAGE  
(2Y)



LINE

HIGH VOLTAGE  
(1Y)



LINE

NOTES:

1. INTERCHANGE ANY TWO LINE LEADS TO REVERSE ROTATION.
2. OPTIONAL THERMOSTATS ARE PROVIDED WHEN SPECIFIED.
3. ACTUAL NUMBER OF INTERNAL PARALLEL CIRCUITS MAY BE A MULTIPLE OF THOSE SHOWN ABOVE.
4. LEAD COLORS ARE OPTIONAL. LEADS MUST ALWAYS BE NUMBERED AS SHOWN.

REV. DESC: REVISE TO SHOW OPTIONAL COLORS			
REV. LTR: E	BY: JLP	REVISED: 01/19/99 10:15	TDR: 0171435
90000		FILE: AAA00005140	MDL: -
		MTL: -	

**BALDOR ELECTRIC Co.**

3PH, DV, 9 LEADS

CD0005