

BALDOR® • ***RELIANCE***

Product Information Packet

CL5023-I

1HP,1725RPM,1PH,60HZ,56C,3532L,XPFC,F1,N

| Part Detail | | | | | | | |
|-------------|---------------------|----------------|-------|-------------|----------|---------------|------------|
| Revision: | P | Status: | PRD/A | Change #: | | Proprietary: | No |
| Type: | AC | Prod. Type: | 3532L | Elec. Spec: | 35WGT878 | CD Diagram: | CD0001 |
| Enclosure: | XPFC | Mfg Plant: | | Mech. Spec: | 35X723 | Layout: | 35LYX723 |
| Frame: | 56C | Mounting: | F1 | Poles: | 04 | Created Date: | 10-01-2008 |
| Base: | RG | Rotation: | R | Insulation: | F | Eff. Date: | 08-31-2015 |
| Leads: | 4#16 A PH,2#18 B PH | | | | | Replaced By: | |
| Literature: | | Elec. Diagram: | | | | | |

| Nameplate NP0977XPSL | | | | | | | | | | |
|----------------------|---------------------|-----|--------|--------------|----|--------------|-----------|-----|--|--|
| NO. | | | | | | CC | | | | |
| SER. | | | | | | | TEMP CODE | T3C | | |
| SPEC. | 35X723T878G1 | | | | | | | | | |
| CAT.NO. | CL5023-I | | | | | | | | | |
| HP | 1 | | | | | | | | | |
| VOLTS | 115/230 | | | | | | | | | |
| AMPS | 12/6 | | | | | | | | | |
| RPM | 1725 | | | | | MOTOR WEIGHT | 57 | | | |
| HERTZ | 60 | PH | 1 | CL | F | DE BRG | 6205 | | | |
| SER.F. | 1.15 | DES | L | CODE | K | ODE BRG | 6203 | | | |
| FRAME | 56C | | GREASE | POLYREX EM | | | | | | |
| RATING | 40C AMB-CONT | | | | | | | | | |
| USABLE AT 208V | 6.3 | | | NEMA-NOM-EFF | 68 | PF | 77 | | | |
| | NEMA MG-1 PT 5,IP55 | | | | | | | | | |

| Parts List | | |
|-------------|--|----------|
| Part Number | Description | Quantity |
| SA176824 | SA 35X723T878G1 | 1.000 EA |
| RA164892 | RA 35X723T878G1 | 1.000 EA |
| EC1324A02 | ELEC CAP, 324-389 MFD, 125V, 1.48D X 3. | 2.000 EA |
| 35CB1005A01 | CONDUIT BOX,MACH - GROUP "C" MTRS | 1.000 EA |
| 35EP3700B07 | FR ENDPLATE, XPFC - GROUP C, W/ DRAIN | 1.000 EA |
| HW4506A02 | BREATHER/DRAIN-EXP PROOF-.125-27 NPTF AI | 1.000 EA |
| HW3022E05 | .125 DIA X .500 ROLLED SPRING PIN | 1.000 EA |
| 51XW0832A07 | 8-32 X .44, TAPTITE II, HEX WSHR SLTD SE | 2.000 EA |
| HW5100A03SP | WAVY WASHER (W1543-017) | 1.000 EA |
| 35EP1704A39 | PUEP 205 BRG XP GRP C W/SLINGER, DRAIN | 1.000 EA |
| HW4506A02 | BREATHER/DRAIN-EXP PROOF-.125-27 NPTF AI | 1.000 EA |
| HW3022E05 | .125 DIA X .500 ROLLED SPRING PIN | 1.000 EA |
| 51XN1032A20 | 10-32 X 1 1/4 HX WS SL SR | 2.000 EA |
| HW4001A01 | 1/4 HX SOC PIPE PLG (F/S) ALLOY STEEL W/ | 2.000 EA |
| 60XN1032A07 | 10-32 X 1/2 TRUSS HEAD, TORX SERRATED ZN | 2.000 EA |
| XY3118A12 | 5/16-18 HEX NUT DIRECTIONAL SERRATION | 4.000 EA |
| 51XB1214A16 | 12-14X1.00 HXWSSLD SERTYB | 1.000 EA |
| 35FH4005A44 | FH NO GREASER & SPL NOTCH @ 7 | 1.000 EA |
| 51XW1032A06 | 10-32 X .38, TAPTITE II, HEX WSHR SLTD S | 3.000 EA |
| 35CB1501A01 | CONDUIT BOX LID, MACH. - GROUP "C" MTRS | 1.000 EA |
| RM1020A41 | O-RING, -150 BUNA-N, .103 CS X 2.862 ID | 1.000 EA |
| HA2071A02 | SLINGER ALUM (AUTO) | 1.000 EA |
| 80XN1032A04 | 10-32 X 1/4 SET SCREW | 1.000 EA |
| HW2501D13 | KEY, 3/16 SQ X 1.375 | 1.000 EA |

| Parts List (continued) | | |
|-------------------------------|--|-----------------|
| Part Number | Description | Quantity |
| HA7000A04 | KEY RETAINER 0.625 DIA SHAFTS | 1.000 EA |
| 85XU0407S04 | 4X1/4 U DRIVE PIN STAINLESS | 6.000 EA |
| LB1359F | ALUM XP CAUTION LABEL | 1.000 EA |
| HA6003A52 | CLAMP, CAPACITOR, WHITE ZINC PLATED | 2.000 EA |
| 51XW0832A07 | 8-32 X .44, TAPTITE II, HEX WSHR SLTD SE | 2.000 EA |
| MJ1000A02 | GREASE, POLYREX EM EXXON (USe 4824-15A) | 0.050 LB |
| 35FN3002A05 | EXFN, PLASTIC, 6.376 OD, .638 ID | 1.000 EA |
| MG1025G29 | WILKOFASST, 789.229, DARK CHARCOAL GRAY | 0.017 GA |
| SP5055A11 | MODEL 35 TYPE L STATIONARY SWITCH WITH L | 1.000 EA |
| HA3104A10 | THRUBOLT, 5/16-18 X 10.25 | 4.000 EA |
| LB1119N | WARNING LABEL | 1.000 EA |
| LC0081 | CONNECTION LABEL X | 1.000 EA |
| NP0977XPSL | SS XP UL CSA CC CL-I GP-C&D | 1.000 EA |
| 36PA1000 | PKG GRP, PRINT PK1016A06 | 1.000 EA |
| MN416A01 | TAG-INSTAL-MAINT no wire (1200/bx) 11/14 | 1.000 EA |

AC Induction Motor Performance Data

Record # 36726 - Typical performance - not guaranteed values

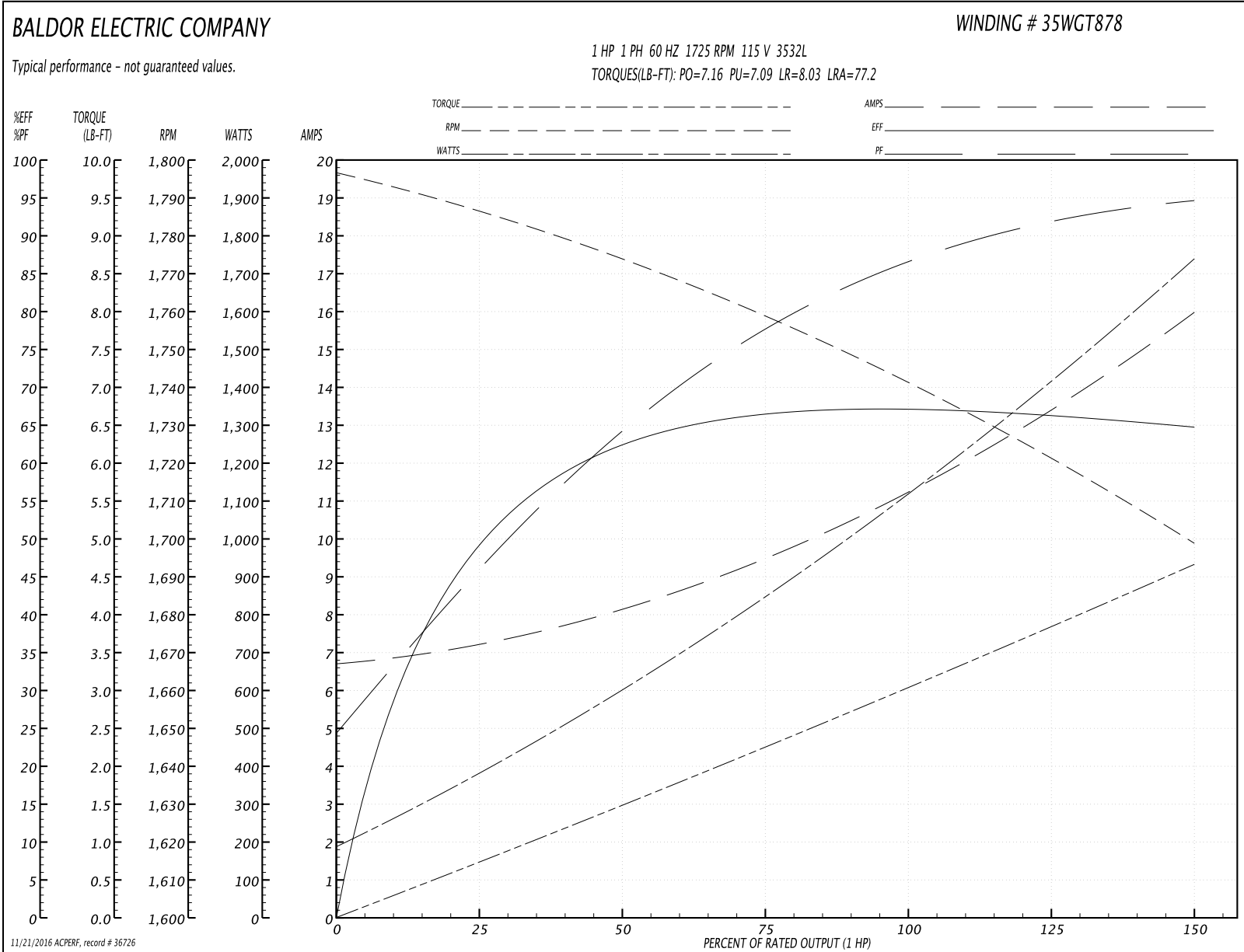
| | | |
|-------------------------------|--------------------|------------------------|
| Winding: 35WGT878-R006 | Type: 3532L | Enclosure: XPFC |
|-------------------------------|--------------------|------------------------|

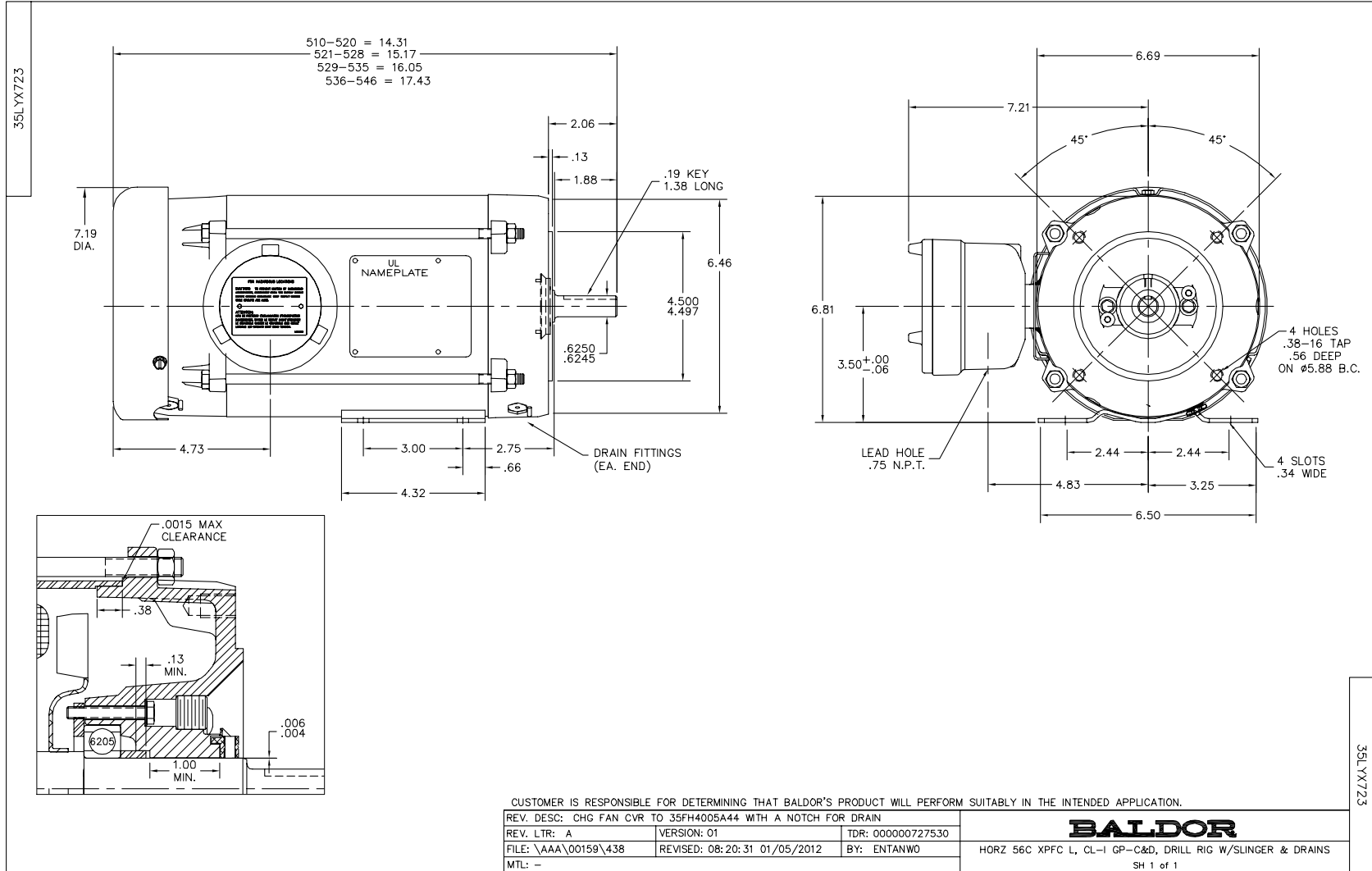
| Nameplate Data | | | | 115 V, 60 Hz: Low Voltage Connection | |
|-----------------------|--------------|--------------|----|---|----------------------------|
| Rated Output (HP) | 1 | | | Full Load Torque | 3.11 LB-FT |
| Volts | 115/230 | | | Start Configuration | direct on line |
| Full Load Amps | 12/6 | | | Breakdown Torque | 7.16 LB-FT |
| R.P.M. | 1725 | | | Pull-up Torque | 7.09 LB-FT |
| Hz | 60 | Phase | 1 | Locked-rotor Torque | 8.03 LB-FT |
| NEMA Design Code | L | KVA Code | K | Starting Current | 77.2 A |
| Service Factor (S.F.) | 1.15 | | | No-load Current | 6.68 A |
| NEMA Nom. Eff. | 68 | Power Factor | 77 | Line-line Res. @ 25°C | 0.731 Ω A Ph 1.8 Ω B Ph |
| Rating - Duty | 40C AMB-CONT | | | Temp. Rise @ Rated Load | 65°C |
| S.F. Amps | | | | Temp. Rise @ S.F. Load | 77°C |

Load Characteristics 115 V, 60 Hz, 1 HP

| % of Rated Load | 25 | 50 | 75 | 100 | 125 | 150 | S.F. |
|-----------------|------|------|------|------|------|------|------|
| Power Factor | 48 | 66 | 80 | 86 | 92 | 95 | 90 |
| Efficiency | 48.1 | 62.3 | 66.5 | 67.9 | 66.8 | 64.3 | 67.2 |
| Speed | 1784 | 1772 | 1759 | 1739 | 1721 | 1698 | 1728 |
| Line amperes | 7.3 | 8.22 | 9.58 | 11.5 | 13.5 | 16 | 12.7 |

Performance Graph at 115V, 60Hz, 1.0HP Typical performance - Not guaranteed values





CD0001



| | | | |
|---|---------|------------------------|--------------|
| REV. DESC: REVISE TO SHOW OPTIONAL COLORS | | | |
| REV. LTR: D | BY: JLP | REVISED: 04/08/99 1:16 | TDR: 0178636 |
| 100000 | | FILE: AAA00007405 | MDL: - |
| | | MTL: - | |

BALDOR ELECTRIC Co.

TYPE L, DV, REV, 6 LEADS

CD0001