

# **BALDOR**® • *RELIANCE*

## **Product Information Packet**

# **EM4314T-5**

**60HP,1780RPM,3PH,60HZ,364T,1462M,TEFC,F1**

Part Detail							
Revision:	J	Status:	PRD/A	Change #:		Proprietary:	No
Type:	AC	Prod. Type:	A36062M	Elec. Spec:	A36WG0722	CD Diagram:	416820-036
Enclosure:	TEFC	Mfg Plant:		Mech. Spec:		Layout:	617428-012
Frame:	364T	Mounting:	F1	Poles:	04	Created Date:	10-19-2010
Base:		Rotation:	R	Insulation:	F	Eff. Date:	09-26-2016
Leads:	3#4					Replaced By:	
Literature:		Elec. Diagram:					

Nameplate NP2383L									
CAT.NO.	EM4314T-5			SPEC NO.	P36G3426				
HP	60	AMPS	54.4	VOLTS	575	DESIGN	B		
FRAME	364T	RPM	1780	HZ	60	AMB	40	SF	1.15
DRIVE END BEARING	65BC03J30X		PHASE	3	DUTY	CONT		INSUL.CLASS	F
OPP D.E. BEARING	65BC03J30X		TYPE	P	ENCL	TEFC	CODE	G	
SER.NO.				POWER FACTOR	87	NEMA-NOM-EFFICIENCY	95		
NEMA NOM/CSA QUOTED EFF				MAX CORR KVAR	10.0	GUARANTEED EFFICIENCY	94.5		
				MOTOR WEIGHT	840				

Parts List		
Part Number	Description	Quantity
SA209402	SA P36G3426	1.000 EA
RA196663	RA P36G3426	1.000 EA
000613006PU	N/P (RELEASE QTY 10,000) UL CSA LABEL	1.000 EA
000692000VD	LABEL WARNING	1.000 EA
NP2383L	SUPER-E ,SS, CC, CSA-C US, CSA EEV	1.000 EA
004824015A	GREASE POLYREX EM	0.544 LB
032018008AK	HHCS 1/4-20X1 PLATED	4.000 EA
032018012DK	HHCS 1/2-13X1-1/2 PLTD.	4.000 EA
032018024CK	HHCS 3/8-16X3 PLTD.	3.000 EA
032018012DK	HHCS 1/2-13X1-1/2 PLTD.	4.000 EA
032018024CK	HHCS 3/8-16X3 PLTD.	3.000 EA
034180012DA	KEY 1X4X1/4X1-1/2 L	1.000 EA
034530052AB	P/NIP 1/8X6-1/2 GALV.	1.000 EA
034600001AA	BUSH 1/4TO1/8 BLACK	1.000 EA
034690001AB	SQHDPLG, COND	1.000 EA
035000001G	GREASE RELIEF FITTING, ALEMITE 317400	1.000 EA
085922073B	BRKT 360 085922072WCC KB	1.000 EA
085922073B	BRKT 360 085922072WCC KB	1.000 EA
078548001K	FAN KB 100/30 (70) 360	1.000 EA
078559001A	+FANCV - 360	1.000 EA
410700004F	WSHR	1.000 EA
415072001B	CLAMP	1.000 EA
415096002A	CPLG 1/8 HEX TYPE	1.000 EA
034600001AA	BUSH 1/4TO1/8 BLACK	1.000 EA

Parts List (continued)		
Part Number	Description	Quantity
415045002E	SLGR	1.000 EA
034690001AB	SQHDPLG, COND	1.000 EA
035000001G	GREASE RELIEF FITTING, ALEMITE 317400	1.000 EA
032018005AK	HHCS 1/4-20X5/8 PLATED	4.000 EA
032018008CK	HHCS 3/8-16X1L PLATED	4.000 EA
033512004LB	HHTTS 1/4-20X1/2 PLTD.	1.000 EA
035000001A	ALFTG 1/8" 1610-BL	1.000 EA
035000001A	ALFTG 1/8" 1610-BL	1.000 EA
043292000AJ	GASK 320-400	1.000 EA
077176000L	C/BOX, PAINTED 360-400	1.000 EA
077176001A	CBOXC, PAINTED 360-400	1.000 EA
402731001A	GASK 360-440	1.000 EA
406099000A	PLUG - FAN COVER 320-440	1.000 EA
415000103D	T/LUG #4AWG-1/0AWG W/HOLE FOR .250 BOLT	1.000 EA
418150003A	GREASE FITTING CAP	1.000 EA
418150003A	GREASE FITTING CAP	1.000 EA
MG1000Y03	MUNSELL 2.53Y 6.70/ 4.60, GLOSS 20,	0.250 GA
033775004EA	DRSCR #6-1/4 304 S.S.	2.000 EA
034180034HA	KEY 5/8X5/8X4-1/4 L	1.000 EA
421948051	LABEL, MYLAR	1.000 EA

REL. S.O.	FRAME	HP	TYPE	PHASE/HERTZ	RPM	VOLTS
	364T	60	P	3/60	1780	575
AMPS	DUTY	AMB °C/ INSUL.	S.F.	NEMA DESIGN	CODE LETTER	ENCL.
54.4	CONT	40/F	1.15	B	G	TEFC
E/S	ROTOR	TEST S.O.	TEST DATE	STATOR RES. @25 °C OHMS (BETWEEN LINES)		
492282	418141-35-YE	---	---	.173		

PERFORMANCE

LOAD	HP	AMPERES	RPM	POWER FACTOR %	EFFICIENCY %
NO LOAD	0	16.1	1800	4.67	0
1/4	15.0	20.7	1795	58.6	93.0
2/4	30.0	30.0	1791	78.7	95.2
3/4	45.0	41.6	1786	85.0	95.3
4/4	60.0	54.4	1781	87.0	95.0
5/4	75.0	68.1	1775	87.5	94.3

SPEED TORQUE

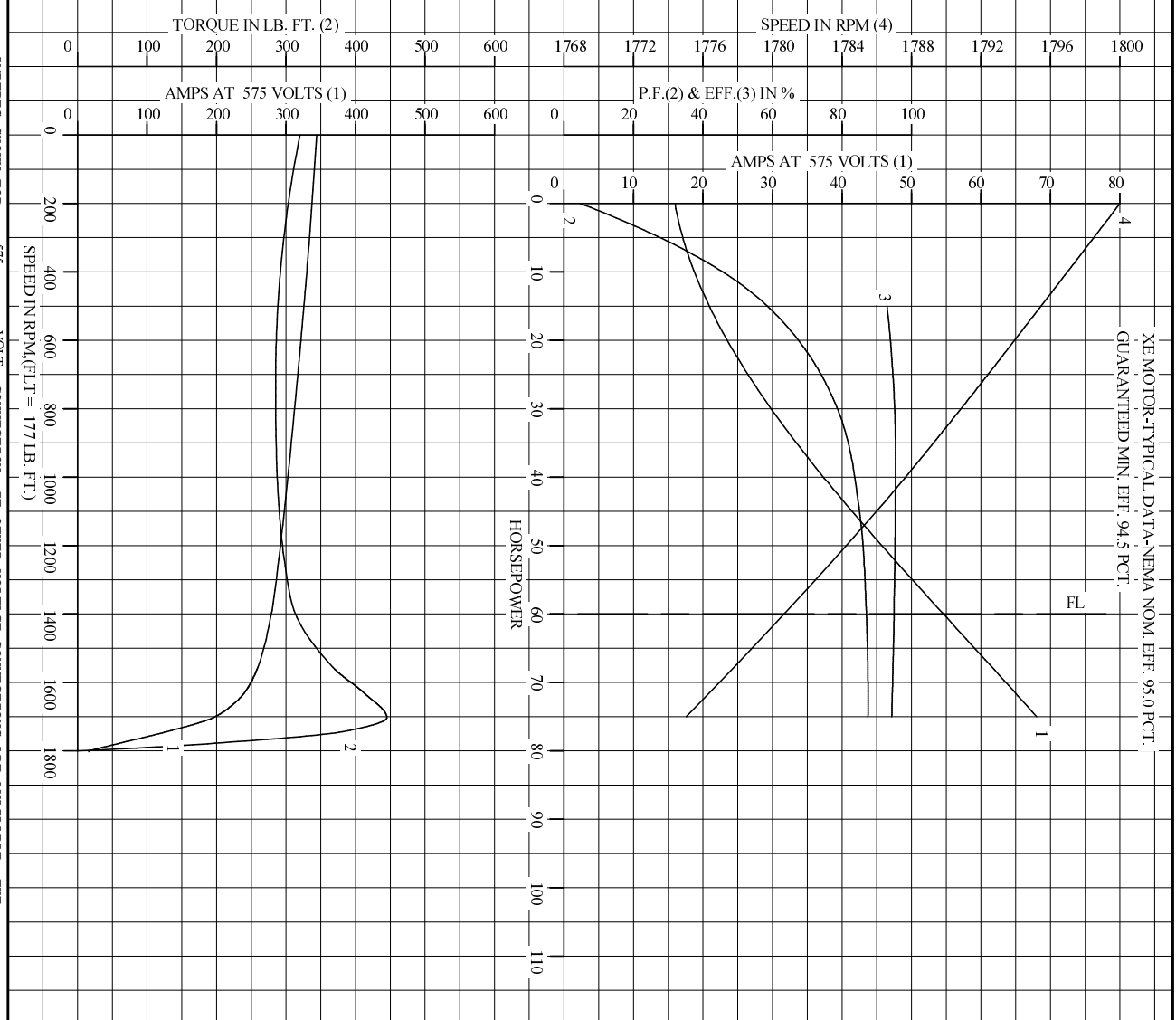
	RPM	TORQUE % FULL LOAD	TORQUE LB.-FT.	AMPERES
LOCKED ROTOR	0	181	320	344
PULL UP	720	161	285	316
BREAKDOWN	1703	251	445	195
FULL LOAD	1781	100	177	54.4

AMPERES SHOWN FOR 575. VOLT CONNECTION. IF OTHER VOLTAGE CONNECTIONS ARE AVAILABLE, THE AMPERES WILL VARY INVERSELY WITH THE RATED VOLTAGE

REMARKS: TYPICAL DATA  
 XE MOTOR-TYPICAL DATA-NEMA NOM. EFF. 95.0 PCT.  
 GUARANTEED MIN. EFF. 94.5 PCT.

<b>BALDOR</b>	DR. BY J. P. MCGILL	<b>A-C MOTOR</b>
	CK. BY K. W. KANOUFF	
	APP. BY K. W. KANOUFF	<b>PERFORMANCE DATA</b>
	DATE 12/16/91	ISSUE DATE 12/15/10

REL S.O. \_\_\_\_\_ RPM 1780 S.F. 1.15 ROTOR 418141-35-YE  
 FRAME 364T VOLTS 575 NEMA DESIGN B TEST S.O. TYPICAL DATA  
 HP 60 AMPS 54.4 DUTY CONT G CODE LETTER  
 TYPE P ENCLOSURE TEFC STATOR RES. @ 25 °C .173  
 PHASE/HERTZ 3/60 AMB °C/INSUL 40/F E/S 492282 OHMS (BETWEEN LINES)



AMPERES SHOWN FOR 575 VOLT CONNECTION, IF OTHER VOLTAGE CONNECTIONS ARE AVAILABLE, THE AMPERES WILL VARY INVERSELY WITH THE RATED VOLTAGE.

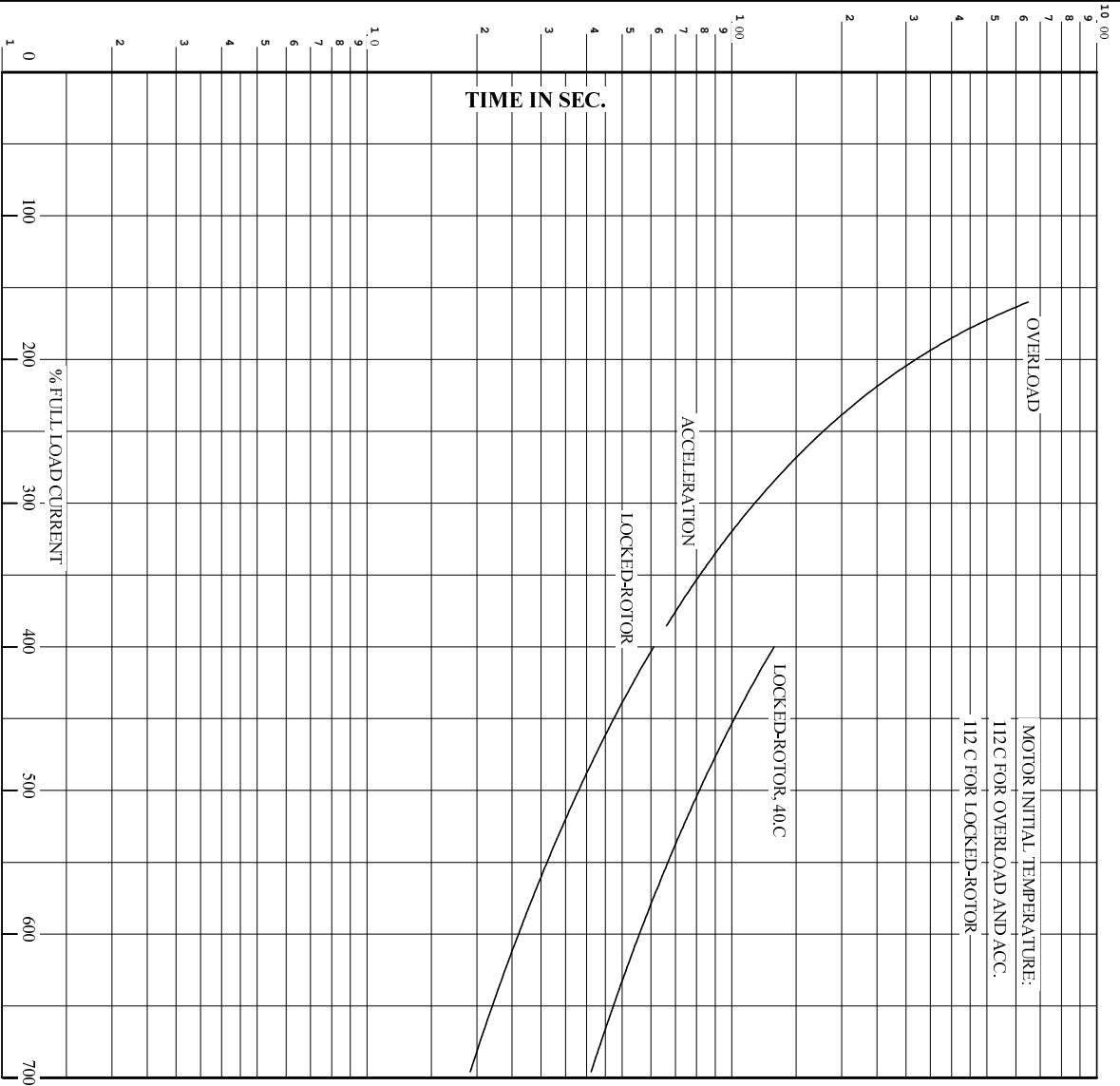
**BALDOR**

DR. BY J.P. MCGILL  
 CK. BY K.W. KANOUFF  
 APP. BY K.W. KANOUFF  
 DATE 12/16/91

**A-C MOTOR PERFORMANCE CURVES** A36WG0722-R001  
 ISSUE DATE 12/15/10

Printed on 12/15/10 9:04 @ pscs-motoreng

REL. S.O. . . . . RPM 1780 . . . . . S.F. 1.15 . . . . . ROTOR 418141-35-YE  
 FRAME 364T . . . . . VOLTS 575 . . . . . NEMA DESIGN B . . . . . TEST S.O. TYPICAL DATA  
 HP 60 . . . . . AMPS 54.4 . . . . . CODE LETTER G . . . . . TEST DATE ---  
 TYPE P . . . . . DUTY CONT . . . . . ENCLOSURE TEFC . . . . . STATOR RES. @ 25 C. 1.73  
 PHASE/HERTZ 3/60 . . . . . AMB C/INSUL 40/F . . . . . E/S 492282 . . . . . OHMS (BETWEEN LINES)



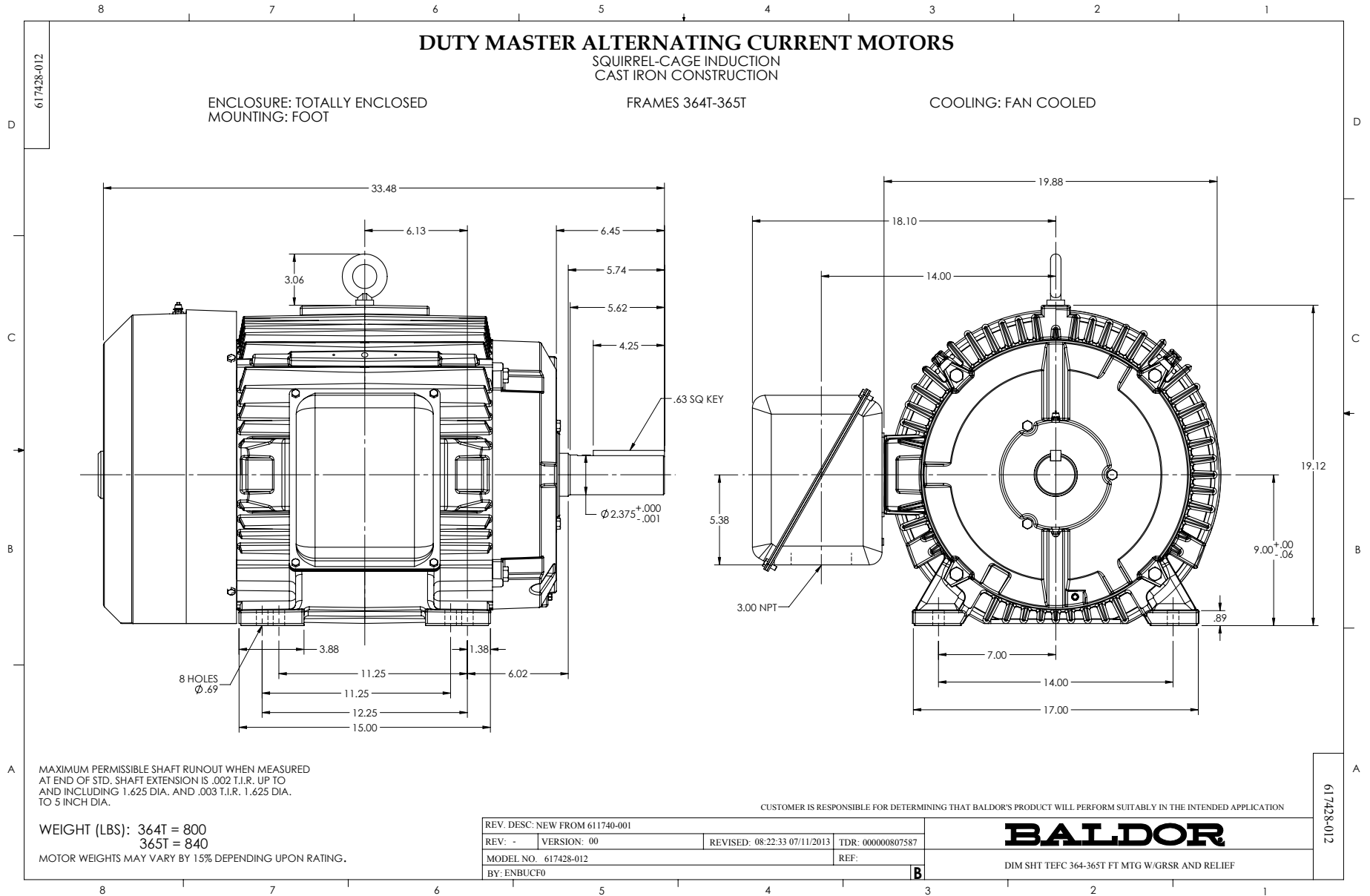
REMARKS: THERMAL LIMIT CURVE  
 XE MOTOR-TYPICAL DATA-NEMA NOM. EFF. 95.0 PCT.  
 GUARANTEED MIN. EFF. 94.5 PCT.

AMPERES SHOWN FOR 575 VOLT CONNECTION, IF OTHER VOLTAGE CONNECTIONS ARE AVAILABLE, THE AMPERES WILL VARY INVERSELY WITH THE RATED VOLTAGE.



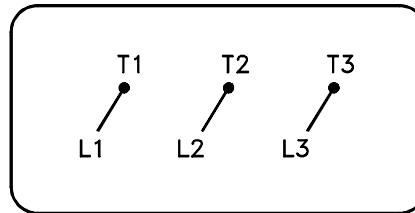
DR. BY J.P. McGILL  
 CK. BY K.W. KANDLER  
 App. BY K.W. KANDLER  
 DATE 12/16/91

**A-C MOTOR**  
**PERFORMANCE**  
**CURVES**  
 A36WG0722-R001  
 ISSUE DATE 12/15/10



416820-036

A-C MOTOR  
CONNECTION DIAGRAM  
STANDARD 3 LEAD CONNECTED



(N.P. 1575-BA)

416820-036

REV. DESC: LOADED TO BUS, C/R 335225		
REV. LTR: -	VERSION: 00	TDR: 000000538207
FILE: \MGA\00000\682	REVISED: 11:54:06 04/30/2010	
MTL: -	BY: RAGRA	

**BALDOR**

CONN DIAG - STANDARD 3 LEAD

SH 1 of 1

Marketing maintained PDF of MN408:

<http://www.baldor.com/support/Literature/Load.ashx/MN408?ManNumber=MN408>

Marketing maintained PDF of MN416:

<http://www.baldor.com/support/Literature/Load.ashx/MN416?ManNumber=MN416>