

BALDOR® • ***RELIANCE***

Product Information Packet

M1005T

1.5/.38HP,1725/850RPM,3PH,60HZ,145T,3524

Part Detail							
Revision:	J	Status:	PRD/A	Change #:		Proprietary:	No
Type:	AC	Prod. Type:	3524M	Elec. Spec:	35WGX011	CD Diagram:	CD0032
Enclosure:	OPEN	Mfg Plant:		Mech. Spec:	35BB001	Layout:	35LYBB001
Frame:	145T	Mounting:	F1	Poles:	04/08	Created Date:	12-22-2009
Base:	RG	Rotation:	R	Insulation:	B	Eff. Date:	05-17-2016
Leads:	6#18					Replaced By:	
Literature:		Elec. Diagram:					

Nameplate NP1256L										
CAT.NO.	M1005T									
SPEC.	35BB001X011									
HP	1.5/.38									
VOLTS	208-230									
AMP	4.4/1.8									
RPM	1725/850									
FRAME	145T				HZ	60			PH	3
SER.F.	1.15		CODE	F	DES	B		CLASS	B	
NEMA-NOM-EFF			PF							
RATING	40C AMB-CONT									
CC									USABLE AT 208V	
DE	6205				ODE	6203				
ENCL	OPEN		SN							

Parts List		
Part Number	Description	Quantity
SA189004	SA 35BB001X011	1.000 EA
RA176723	RA 35BB001X011	1.000 EA
NS2512A01	INSULATOR, CONDUIT BOX X	1.000 EA
35CB3009	35 CB W/1.09 DIA. LEAD HOLE @ 6:	1.000 EA
51XB1016A07	10-16 X 7/16 HXWSSLD SERTYB	2.000 EA
11XW1032G06	10-32 X .38, TAPTITE II, HEX WSHR SLTD U	1.000 EA
35FE3201A01	FREP ASSEMBLY FOR ROUTING	1.000 EA
HW4500A01	1641B(ALEMITE)400 UNIV, GREASE FITT	1.000 EA
HW5100A03SP	WAVY WASHER (W1543-017)	1.000 EA
35PE3200A01	PUEP ASSEMBLY FOR ROUTING PURPOSES	1.000 EA
HW4500A01	1641B(ALEMITE)400 UNIV, GREASE FITT	1.000 EA
XY1032A02	10-32 HEX NUT DIRECTIONAL SERRATION	4.000 EA
35CB4521	35 LIPPED CB LID (GALV & PHOSPH)	1.000 EA
51XW0832A07	8-32 X .44, TAPTITE II, HEX WSHR SLTD SE	4.000 EA
HW2501D13	KEY, 3/16 SQ X 1.375	1.000 EA
HA7000A01	KEY RETAINER 7/8" DIA SHAFT	1.000 EA
85XU0407S04	4X1/4 U DRIVE PIN STAINLESS	2.000 EA
MJ1000A02	GREASE, POLYREX EM EXXON (USe 4824-15A)	0.050 LB
MG1000G27	MED CHARCOAL METALLIC GREY 400-0096	0.017 GA
HA3100A18	THRUBOLT 10-32 X 9.250	4.000 EA
LB1119N	WARNING LABEL	1.000 EA
LC0032	CONNECTION LABEL	1.000 EA
NP1256L	ALUM UL CSA CC	1.000 EA
35PA1066	PKG GRP, PRINT PK1008A06	1.000 EA

Parts List (continued)		
Part Number	Description	Quantity
MN416A01	TAG-INSTAL-MAINT no wire (1200/bx) 11/14	1.000 EA

Accessories		
Part Number	Description	Multiplier
35-8764	C FACE KIT	A8
35EP1604A01SP	D-FLANGE KIT	A8

AC Induction Motor Performance Data

Record # 9929 - Typical performance - not guaranteed values

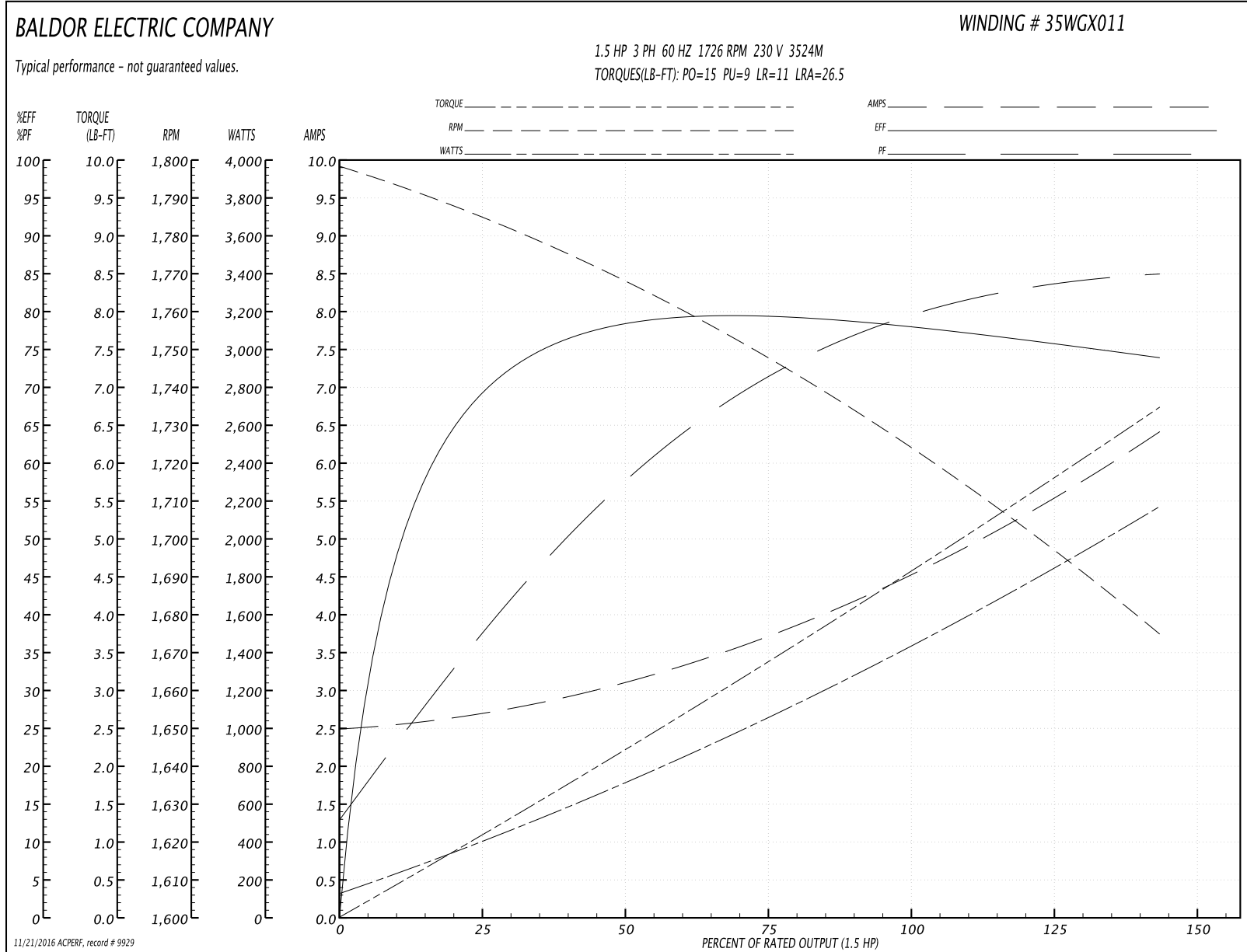
Winding: 35WGX011-R001	Type: 3524M	Enclosure: OPEN
-------------------------------	--------------------	------------------------

Nameplate Data				230 V, 60 Hz: High Speed Connection	
Rated Output (HP)	1.5/.38			Full Load Torque	4.5 LB-FT
Volts	208-230			Start Configuration	direct on line
Full Load Amps	4.4/1.8			Breakdown Torque	15 LB-FT
R.P.M.	1725/850			Pull-up Torque	9 LB-FT
Hz	60	Phase	3	Locked-rotor Torque	11 LB-FT
NEMA Design Code	B	KVA Code	F	Starting Current	26.5 A
Service Factor (S.F.)	1.15			No-load Current	2.5 A
NEMA Nom. Eff.	0	Power Factor	0	Line-line Res. @ 25°C	4.31 Ω
Rating - Duty	40C AMB-CONT			Temp. Rise @ Rated Load	46°C
S.F. Amps				Temp. Rise @ S.F. Load	60°C

Load Characteristics 230 V, 60 Hz, 1.5 HP

% of Rated Load	25	50	75	100	125	150	S.F.
Power Factor	39	59	71	79	83	85	0
Efficiency	68.2	77.6	79.4	78.6	76.5	73.6	0
Speed	1784	1767	1748	1726	1702	1674	0
Line amperes	2.7	3.1	3.7	4.5	5.4	6.4	5

Performance Graph at 230V, 60Hz, 1.5HP Typical performance - Not guaranteed values



AC Induction Motor Performance Data

Record # 9930 - Typical performance - not guaranteed values

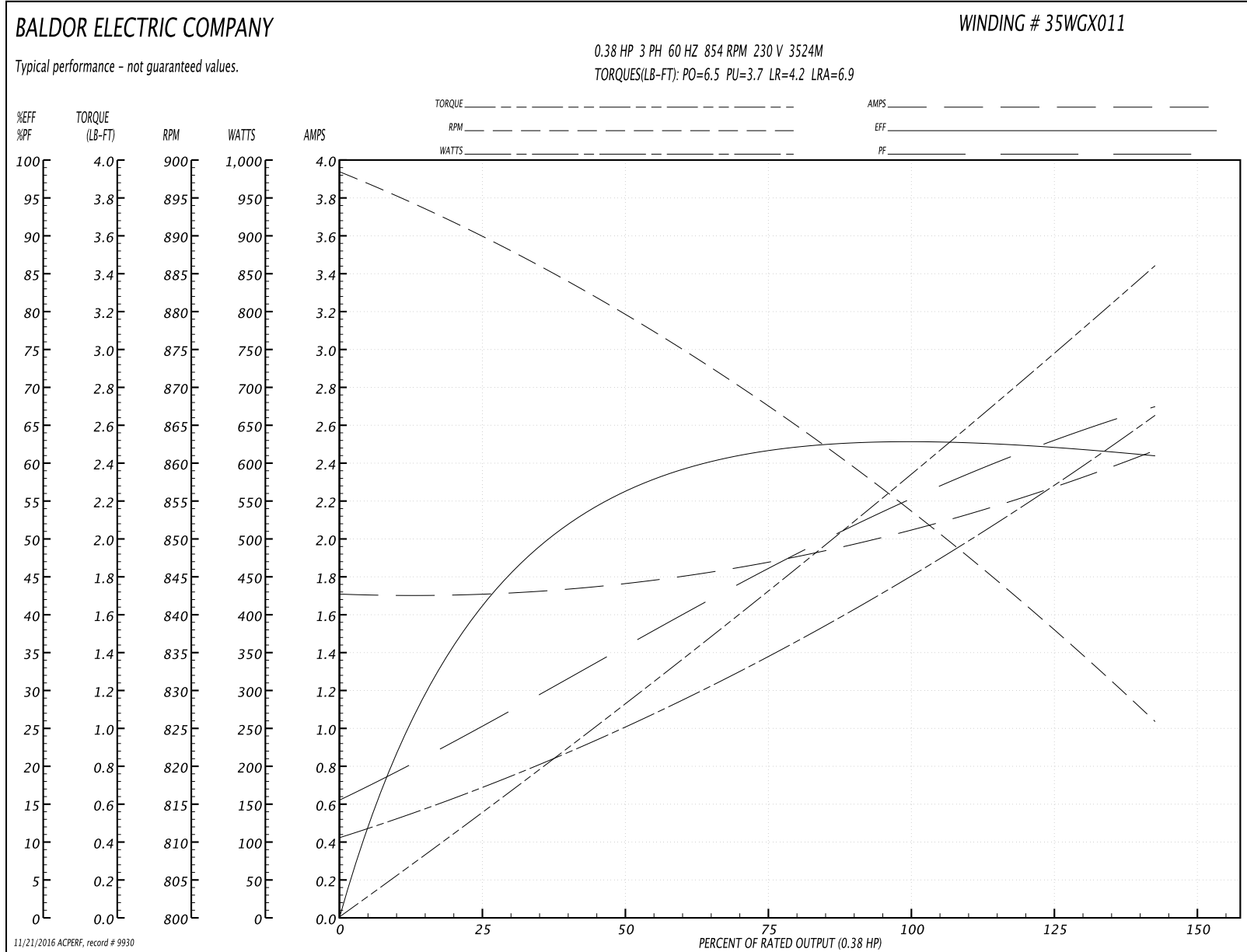
Winding: 35WGX011-R001	Type: 3524M	Enclosure: OPEN
-------------------------------	--------------------	------------------------

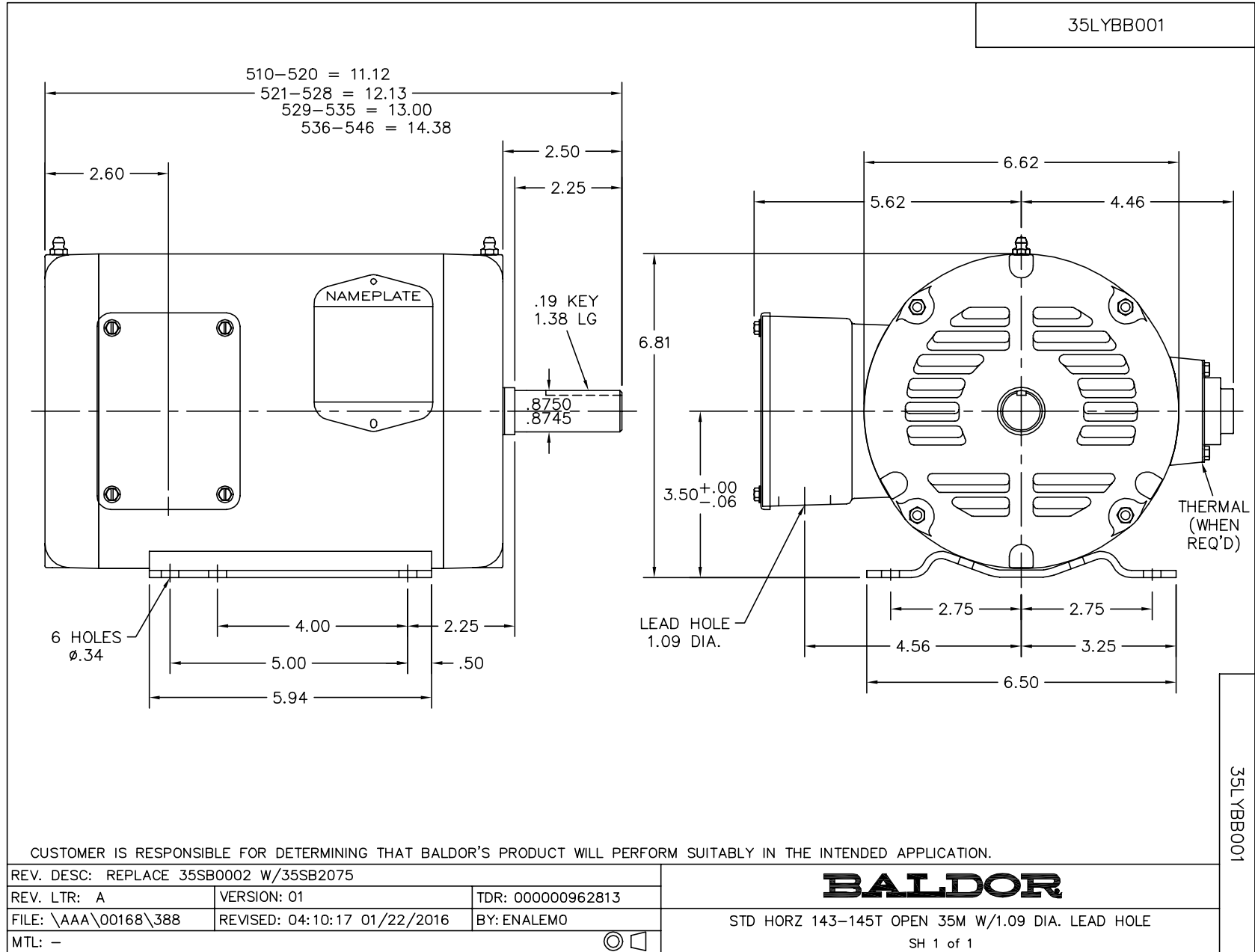
Nameplate Data				230 V, 60 Hz: Low Speed Connection	
Rated Output (HP)	1.5/.38			Full Load Torque	2.3 LB-FT
Volts	208-230			Start Configuration	direct on line
Full Load Amps	4.4/1.8			Breakdown Torque	6.5 LB-FT
R.P.M.	1725/850			Pull-up Torque	3.7 LB-FT
Hz	60	Phase	3	Locked-rotor Torque	4.2 LB-FT
NEMA Design Code	B	KVA Code	F	Starting Current	6.9 A
Service Factor (S.F.)	1.15			No-load Current	1.7 A
NEMA Nom. Eff.	0	Power Factor	0	Line-line Res. @ 25°C	17.2 Ω
Rating - Duty	40C AMB-CONT			Temp. Rise @ Rated Load	51°C
S.F. Amps				Temp. Rise @ S.F. Load	61°C

Load Characteristics 230 V, 60 Hz, 0.38 HP

% of Rated Load	25	50	75	100	125	150	S.F.
Power Factor	29	40	48	57	63	68	61
Efficiency	43.3	56.1	60.7	63.1	62.6	60.8	62.8
Speed	889	879	868	854	842	825	847
Line amperes	1.7	1.8	1.9	2	2.2	2.5	2.1

Performance Graph at 230V, 60Hz, 0.38HP Typical performance - Not guaranteed values

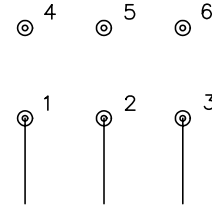




CD0032

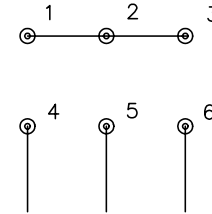


LOW SPEED
(1Y)



LINE

HIGH SPEED
(2Y)



LINE

NOTES:

1. INTERCHANGE ANY TWO LINE LEADS TO REVERSE ROTATION.
2. OPTIONAL THERMOSTATS ARE PROVIDED WHEN SPECIFIED.
3. ACTUAL NUMBER OF INTERNAL PARALLEL CIRCUITS MAY BE A MULTIPLE OF THOSE SHOWN ABOVE.
4. LEAD COLORS ARE OPTIONAL. LEADS MUST ALWAYS BE NUMBERED AS SHOWN.

REV. DESC: REVISE TO SHOW OPTIONAL COLORS			
REV. LTR: E	BY: JLP	REVISED: 01/22/99 8:27	TDR: 0171435
CD0032		FILE: AAA00005145	MDL: -
		MTL: -	

BALDOR ELECTRIC Co.

3PH, SV, 6 LEADS, 2-SPEED 1-WINDING VARIABLE TORQUE

CD0032