

# **BALDOR**® • **RELIANCE**

## **Product Information Packet**

### **VL1309A**

**1HP,3450RPM,1PH,60HZ,56C,3428L,OPEN,F1**

Part Detail							
Revision:	X	Status:	PRD/A	Change #:		Proprietary:	No
Type:	AC	Prod. Type:	3428L	Elec. Spec:	34WG3375	CD Diagram:	CD0052
Enclosure:	OPEN	Mfg Plant:		Mech. Spec:	34F491	Layout:	34LYF491
Frame:	56C	Mounting:	F1	Poles:	02	Created Date:	
Base:	N	Rotation:	ROS	Insulation:	B	Eff. Date:	10-19-2016
Leads:	4#16 A&J,2#18 B PH,1#14 #1TH					Replaced By:	
Literature:		Elec. Diagram:					

Nameplate NP1257L	
CAT.NO.	VL1309A
SPEC.	34F491-3375G1
HP	1
VOLTS	115/208-230
AMP	14/7.8-7
RPM	3450
FRAME	56C
	HZ 60
	PH 1
SER.F.	1.40
	CODE L
	DES N
	CL B
NEMA-NOM-EFF	65
	PF 65
RATING	40C AMB-CONT
CC	USABLE AT 208V 8.8
DE	6203
	ODE 6203
ENCL	OPEN
	SN
	SFA 16/8.8-8

Parts List		
Part Number	Description	Quantity
SA010472	SA 34F491-3375G1	1.000 EA
RA006832	RA 34F491-3375G1	1.000 EA
TPCRJ49CY	THERMAL 1PH 1.00 AUT 120C	1.000 EA
EC1645A06SP	ELEC CAP, 645-774 MFD, 125V, 2.06D X 4.	1.000 EA
11XT0832G06	8-32 X 3/8 TY 23 TAPPING	1.000 EA
WD4100A01	DP-875 HEYCO PLUG OR 62MP0875 MICRO PLAS	1.000 EA
51XW0832A07	8-32 X .44, TAPTITE II, HEX WSHR SLTD SE	3.000 EA
NS2501A01	INSULATOR, CAPACITOR	1.000 EA
51XB1016A05	10-16X5/16HX WA SL SR TYB (F/S)	2.000 EA
HW5100A03SP	WAVY WASHER (W1543-017)	1.000 EA
34EP3401A01SP	PU ENDPLATE, MACH	1.000 EA
34AD2000	BAFFLE PLATE, STAMPED	1.000 EA
51XT0632A06	6-32X3/8 TY23 HXWS SLDSR	4.000 EA
51XN1032A20	10-32 X 1 1/4 HX WS SL SR	2.000 EA
34FH4500A02P	DRIPCOVER, MODEL 34	1.000 EA
51XW0832A07	8-32 X .44, TAPTITE II, HEX WSHR SLTD SE	2.000 EA
34CB4501SP	TERMINAL BOX LID, STAMPED X (PLATED)	1.000 EA
51XW0832A07	8-32 X .44, TAPTITE II, HEX WSHR SLTD SE	2.000 EA
HW2501D13	KEY, 3/16 SQ X 1.375	1.000 EA
HA7000A04	KEY RETAINER 0.625 DIA SHAFTS	1.000 EA
34EP3202A03	FR ENDPLATE, MACH	1.000 EA
NS2500A01	INSULATOR, AUTO THER PROT	1.000 EA
MG1000G27	MED CHARCOAL METALLIC GREY 400-0096	0.014 GA
10XF0440S02	04-40 X 1/8 TYPE F HEX HD STAINLESS STIC	2.000 EA

<b>Parts List (continued)</b>		
<b>Part Number</b>	<b>Description</b>	<b>Quantity</b>
33CB4800A02	CAPACITOR COVER, STAMPED	1.000 EA
SP5086A01	MODEL 34 TERMINAL PANEL SWITCH WITH LEAD	1.000 EA
HA3100A20	THRUBOLT 10-32 X 9.812	4.000 EA
HA6015A02	THERMAL RETAINER (PLATED)	1.000 EA
MN416A01	TAG-INSTAL-MAINT no wire (1200/bx) 11/14	1.000 EA
LB1118	LABEL,WARNING (ROLL LABEL)	1.000 EA
LC0052	CONNECTION LABEL	1.000 EA
NP1257L	ALUM UL CSA CC THERMAL REV MTG	1.000 EA
PK3083T	STYROFOAM PACKING CRADLE W/TAPE	1.000 EA
35PA1000	PKG GRP, PRINT PK1008A06	1.000 EA

**AC Induction Motor Performance Data**

Record # 50767 - Typical performance - not guaranteed values

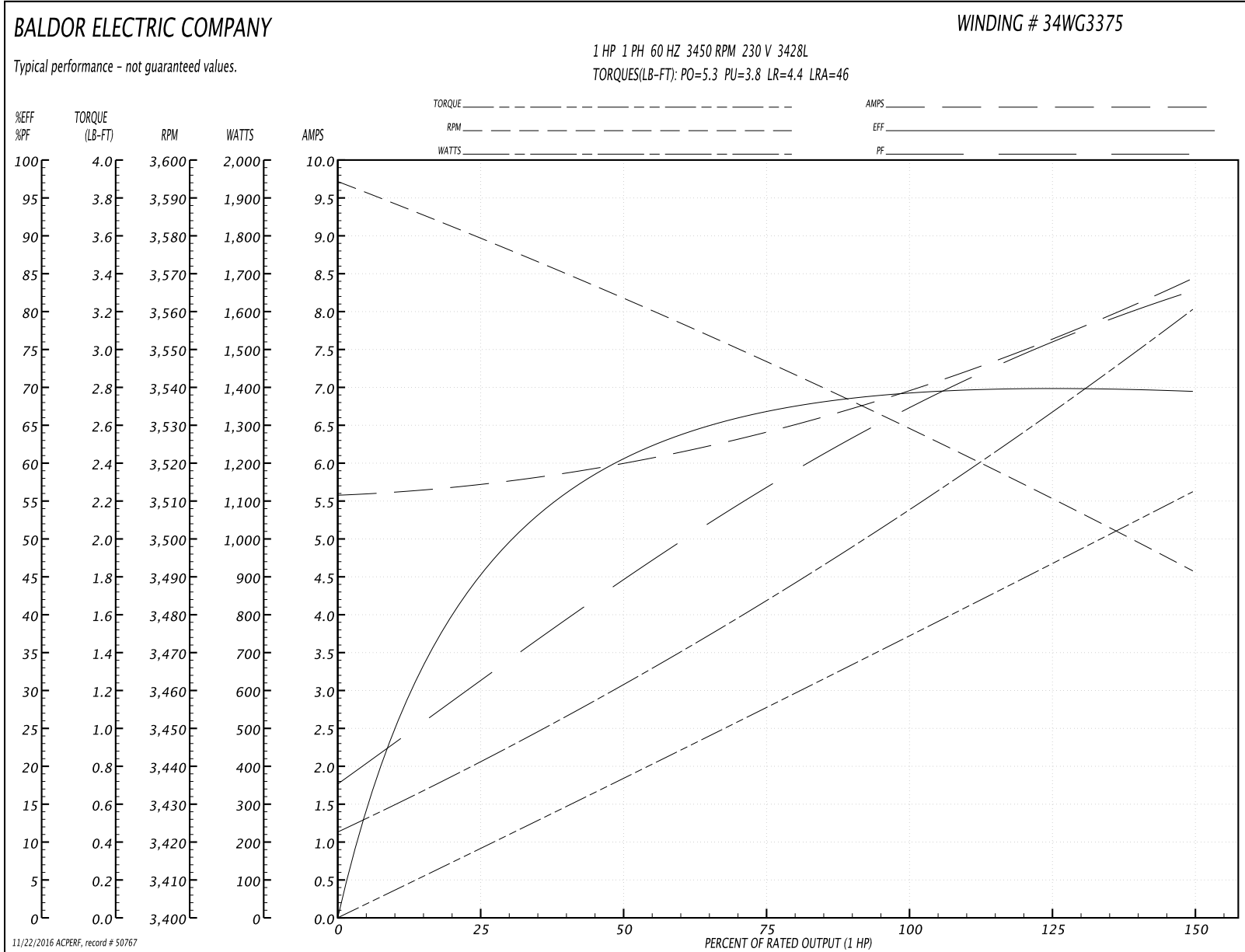
<b>Winding:</b> 34WG3375-R004	<b>Type:</b> 3428L	<b>Enclosure:</b> OPEN
-------------------------------	--------------------	------------------------

Nameplate Data				230 V, 60 Hz: High Voltage Connection	
Rated Output (HP)	1			Full Load Torque	1.5 LB-FT
Volts	115/208-230			Start Configuration	direct on line
Full Load Amps	14/7.8-7			Breakdown Torque	5.3 LB-FT
R.P.M.	3450			Pull-up Torque	3.8 LB-FT
Hz	60	Phase	1	Locked-rotor Torque	4.4 LB-FT
NEMA Design Code	N	KVA Code	L	Starting Current	46 A
Service Factor (S.F.)	1.4			No-load Current	5.6 A
NEMA Nom. Eff.	65	Power Factor	65	Line-line Res. @ 25°C	1.63 Ω A Ph 1.64 Ω B Ph
Rating - Duty	40C AMB-CONT			Temp. Rise @ Rated Load	37°C
S.F. Amps	16/8.8-8			Temp. Rise @ S.F. Load	47°C

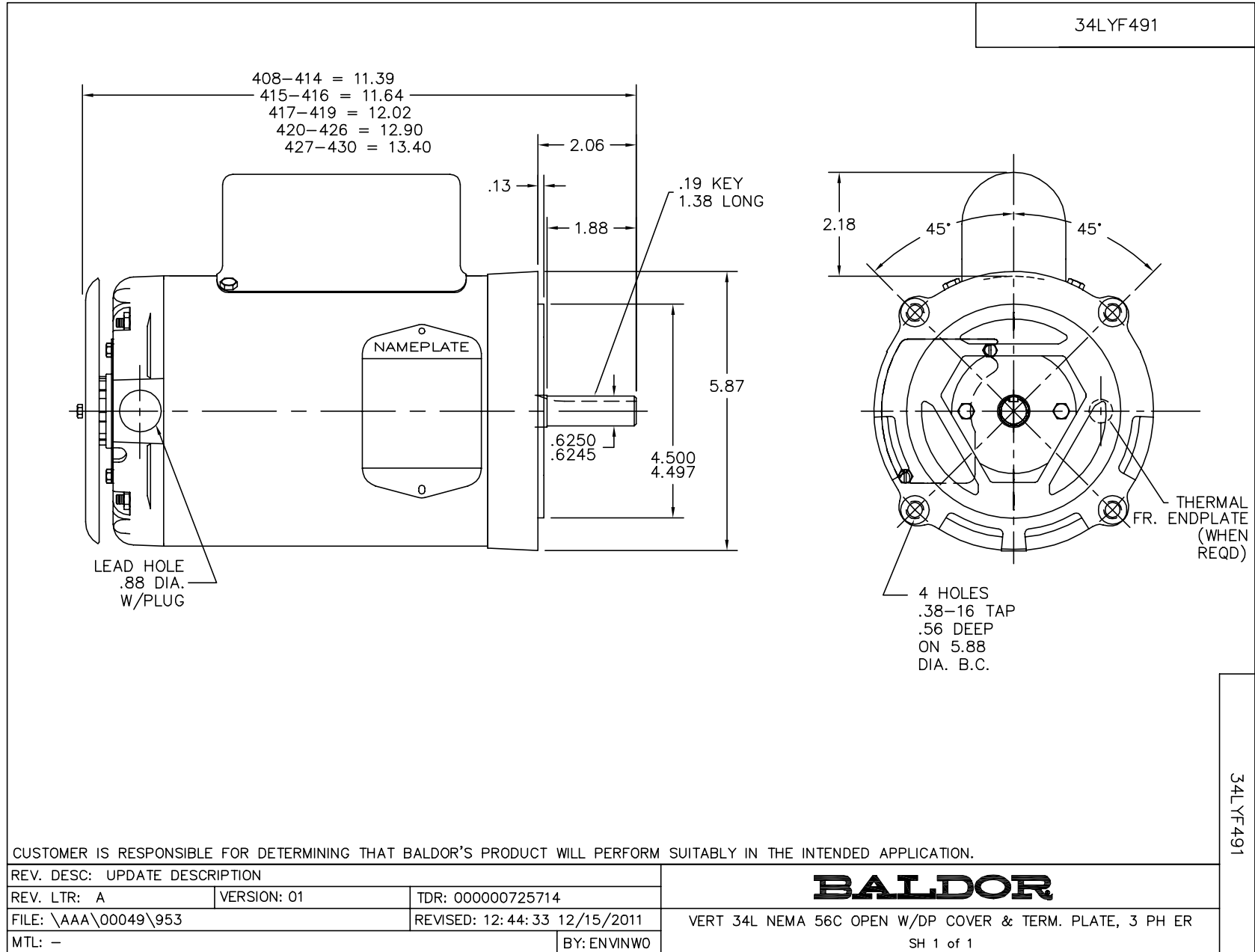
Load Characteristics 230 V, 60 Hz, 1 HP

% of Rated Load	25	50	75	100	125	150	S.F.
Power Factor	31	45	58	68	75	83	79
Efficiency	47.1	60.7	66.5	69.1	70.2	69.4	70.9
Speed	3578	3563	3546	3529	3511	3491	3500
Line amperes	5.7	6	6.4	7	7.7	8.4	8.1

Performance Graph at 230V, 60Hz, 1.0HP Typical performance - Not guaranteed values



11/22/2016 ACPERF, record # 50767



CD0052

