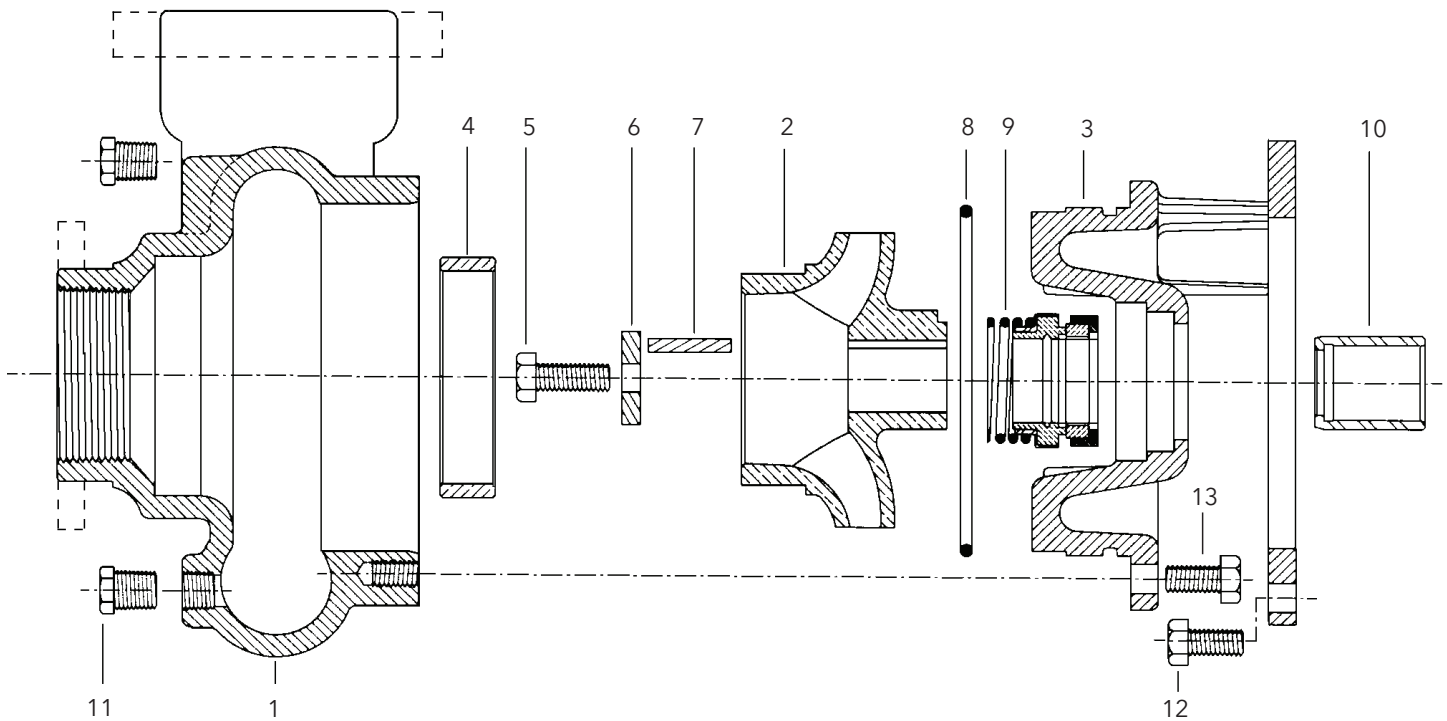


# 3656/3756 LH

## REPAIR PARTS



Item No.	Description	Material	2 x 2 - 5 Part No.	2½ x 2½ - 5 Part No.	3 x 3 - 5 Part No.	4 x 4 - 5 Part No.	5 x 5 - 6 Part No.
1	Casing	Cast iron	1K306	1K307	1K308	1K475	1K476
2	Impeller	Cast iron	2K534(4.0)	2K544(4.19)	2K563(4.38)	2K976 (4.75)	2K998 (5.50 x 4.50)
		Bronze	2K535(4.0)	2K545(4.19)	2K564(4.38)	2K981 (4.75)	2K999 (5.50 x 4.50)
		Cast iron	2K536(3.75)	2K546(3.94)	2K565(4.19)	2K982 (4.62)	2K990 (5.31 x 4.31)
		Bronze	2K537(3.75)	2K547(3.94)	2K566(4.19)	2K983 (4.62)	2K991 (5.31 x 4.31)
		Cast iron	2K538(3.5)	2K548(3.75)	2K567(4.00)	2K984 (4.50)	2K992 (5 x 3.88)
		Bronze	2K539(3.5)	2K549(3.75)	2K568(4.00)	2K985 (4.50)	2K993 (5 x 3.88)
		Cast Iron	2K540(3.25)	2K550(3.56)	2K569(3.81)	2K986 (4.19)	2K994 (5 x 3.56)
		Bronze	2K541(3.25)	2K551(3.56)	2K570(3.81)	2K987 (4.19)	2K995 (5 x 3.56)
		Cast iron	2K542(3.0)	2K552(3.38)	2K571(3.62)	2K988 (4.00)	2K996 (5 x 3.03)
		Bronze	2K543(3.0)	2K533(3.38)	2K572(3.62)	2K989 (4.00)	2K997 (5 x 3.03)
3	Motor adapter	140-180 Frame	Cast iron	1K309			1K110
		210TCZ Frame					1K112
		210 Frame					
4	Casing wear ring	Brass	4K268	4K70	4K266	4K627	
		Cast iron	4K267	4K69	4K265	4K638	
5	Impeller bolt	304 SS	13K43				
6	Impeller washer	304 SS	13K133			13L39	
7	Key	304 SS	4K11				
8	O-ring	BUNA	5K235			5K73	
		Viton	5K236			5K207	
		EPR	5K315			5K194	
9	Standard seal		10K13				
	Hi-temp seal		10K19				
	Viton seal		10K27				
	Abrasive seal		10K64				
10	Shaft sleeve	304 SS	4K66				
11	¼" pipe plug	Cast iron	6K2				
12	Hex head screw - MA	Steel-zinc plated	13K69			13K69 (140-180)	
13	Hex head screw - casing		13K69			13K93 (210)	

- 2 x 2-5, 2½ x 2½-5 and 3 x 3-5 have NPT suction and discharge connections.
- 4 x 4-5 and 5 x 5-6 have flanged suction and discharge connections.

Order Online: [www.PumpCatalog.com](http://www.PumpCatalog.com)

### Xylem Inc.

2881 East Bayard Street Ext., Suite A, Seneca Falls, NY 13148  
Phone: (800) 453-6777 Fax: (888) 322-5877  
[www.xylem.com/brands/gouldswatertechnology](http://www.xylem.com/brands/gouldswatertechnology)

