



TYPE "B" SINGLE STAGE CENTRIFUGAL PUMP Belt/Coupling Drive

CAST IRON IMPELLER

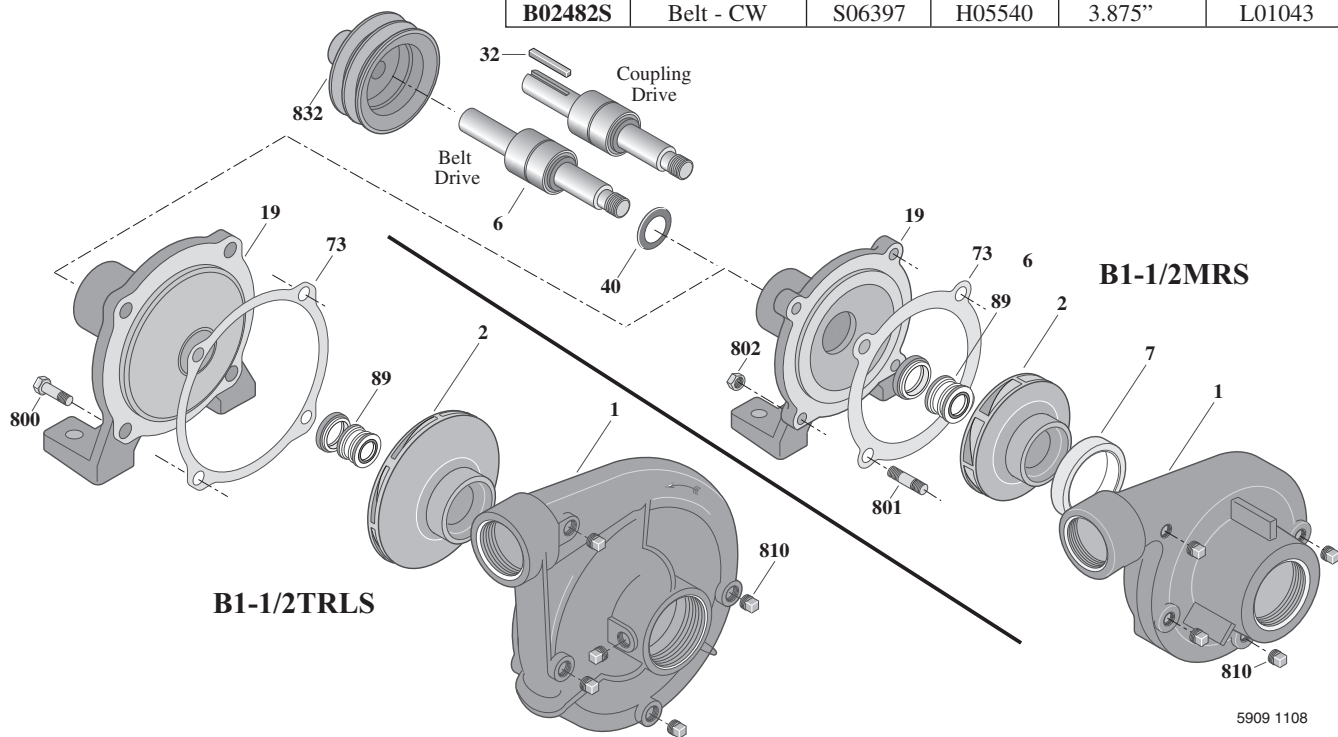
B1-1/2MRS, B1-1/2TRLS

Threaded Case (NPT)

Mechanical Seal Construction

TABLE II

B/M No.	Drive Type	Shaft No.	Impeller	Impeller Diameter	Case, Volute
B56417	Coupling - CW	S17858	S07368	6.50"	L01018
B03539	Belt - CW	S06402	S07368	6.50"	L01018
B74361	Coupling - CW	S17858	L08149	6.50"	L01018
B56416	Coupling - CW	S16578	M01039	3.875"	L01043
B56416S	Coupling - CW	S16578	H05540	3.875"	L01043
B02482	Belt - CW	S06397	M01039	3.875"	L01043
B02482S	Belt - CW	S06397	H05540	3.875"	L01043



5909 1108

Item No.	Part Description	B/M No. – B1-1/2TRLS			B/M No. – B1-1/2MRS		
		B03539	B56417 B74361	B02482S	B56416S	B56416	B02482
1	Case, Volute	See Table II	See Table II	See Table II	See Table II	See Table II	See Table II
2	Impeller	See Table II	See Table II	See Table II	See Table II	See Table II	See Table II
6	Shaft Assembly	See Table II	See Table II	See Table II	See Table II	See Table II	See Table II
7	Wear Ring	–	–	M10913	M10913	S03074	S03074
19	Frame	L01530	L01530	M02638	M02638	M02638	M02638
32	Key, 3/16 x 1"	–	S24151	–	S24151	S24151	–
40	Slinger, Water	S21906	S21906	S05222	S05222	S05222	S05222
67*	Spacer, Impeller	–	–	S17323	S17323	–	–
73	Gasket, Case	S04757	S04757	S04728	S04728	S04728	S04728
89	Seal, Mechanical Shaft	S06405	S06405	S05645	S05645	S05645	S05645
800	Capscrew, 1/2-13x1" (4 Req.)	S26912	S26912	–	–	–	–
801	Stud, 3/8-16x1-3/4" (4 Req.)	–	–	S23996	S23996	S23996	S23996
802	Nut, Hex 3/8-16 (4 Req.)	–	–	S23103	S23103	S23103	S23103
810	Pipe Plug, 1/4" NPT (5 Req.)	S23715	S23715	U78-56ZPS	U78-56ZPS	U78-56ZPS	U78-56ZPS
832	Sheave	S06407	–	S05375	–	–	S05375

* Not illustrated.

ORDER ONLINE www.PumpCatalog.com