



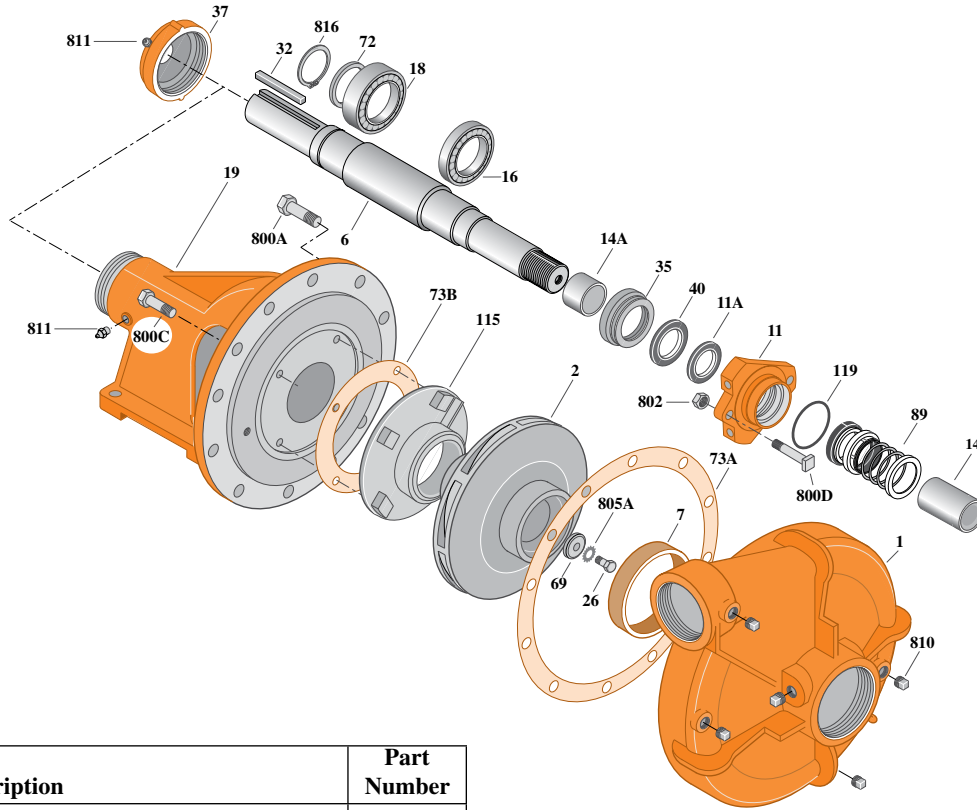
Type "B" Single Stage Centrifugal Pump Bearing Frame Mount

| | |
|---------|------------------|
| Section | FM |
| Page | 160.3 |
| Date | December 1, 2011 |
| | New |

CAST IRON IMPELLER B3JRMBMS

Threaded Case (NPT), Dry Run

Mechanical Shaft Seal Construction



| Ref. | Part Description | Part Number |
|------|--|-------------|
| 1 | Case, Volute | See Table 1 |
| 2 | Impeller | Table 1 |
| 6 | Shaft | See Note 1 |
| 7 | Ring, Wearing | S04176 |
| 11 | Retainer, Mechanical Shaft Seal, Dry Run | M14959 |
| 11A | Dry Run Gland Lip Seal | M12337 |
| 14 | Sleeve, Shaft | S05974L |
| 14A | Sleeve, Shaft | M14971 |
| 16 | Bearing, Ball | S15604 |
| 18 | Bearing, Ball | S13396 |
| 19 | Frame | M14963 |
| 26 | Screw, Impeller 1/2-13x1-1/2" | S23623 |
| 32 | Key, 1/2x4" | S24214 |
| 35 | Inner Bearing Cap | S05928 |
| 37 | Outer Bearing Cap Assembly* | S35277 |
| 40 | Slinger, Water | S10964 |
| 69 | Washer, Impeller | S06319 |
| 72 | Ring, Thrust | S06519 |
| 73A | Gasket, Volute | S06271 |
| 73B | Gasket, Balance Ring | S09943 |
| 89 | Seal, Mechanical Shaft | S32693 |
| 115 | Ring, Balance | M06646 |
| 119 | O-Ring | M14972 |

| Ref. | Part Description | Part Number |
|------|---|-------------|
| 800A | Capscrew, Hex 5/8-11x1-1/2" (10 Rqd.) | S26999 |
| 800A | Capscrew, Hex 5/8-11x1-3/4" (2 Rqd. top ctr.) | S27001 |
| 800C | Capscrew, Hex 3/8-16x1" (4 Rqd.) | S28626 |
| 800D | Bolt, Sq. Head 1/2-13x2-1/4" (2 Rqd.) | S23792 |
| 802 | Nut, Hex 1/2-13x7/16" (2 Rqd.) | S23347 |
| 805 | Washer, Lock | S23038 |
| 810 | Plug, Pipe 1/2 NPT (6 Req.) | S23717 |
| 811 | Fitting, Grease (2 Rqd.) | S23670 |
| 816 | Ring, Retaining | S23016 |

*Includes grease fitting

Table I

| B/M No. | Rotation | Volute Case | Impeller | Impeller Diameter |
|---------|----------|-------------|----------|-------------------|
| B66924D | CW | H01863 | L03038 | 13.50" |

NOTE 1: Shaft Replacement Kit is available for this model. Berkeley part number B07596. Pump shaft sold in replacement kit only. Refer to Supplement "C" for shaft kit components.
NOTE 2: Refer to Supplement "F" for dry run tank repair parts. Dry run lubrication system requires one gallon of food grade hydraulic oil (FGHO), viscosity 150 SSU at 100 °F. Oil not supplied, purchase locally.