



# TYPE "B" SINGLE STAGE CENTRIFUGAL PUMP Electric Motor Drive

|                |                   |
|----------------|-------------------|
| Section        | CC                |
| Page           | 100.3             |
| Date           | September 1, 1995 |
| Supersedes/New |                   |

## SILICON BRONZE IMPELLER

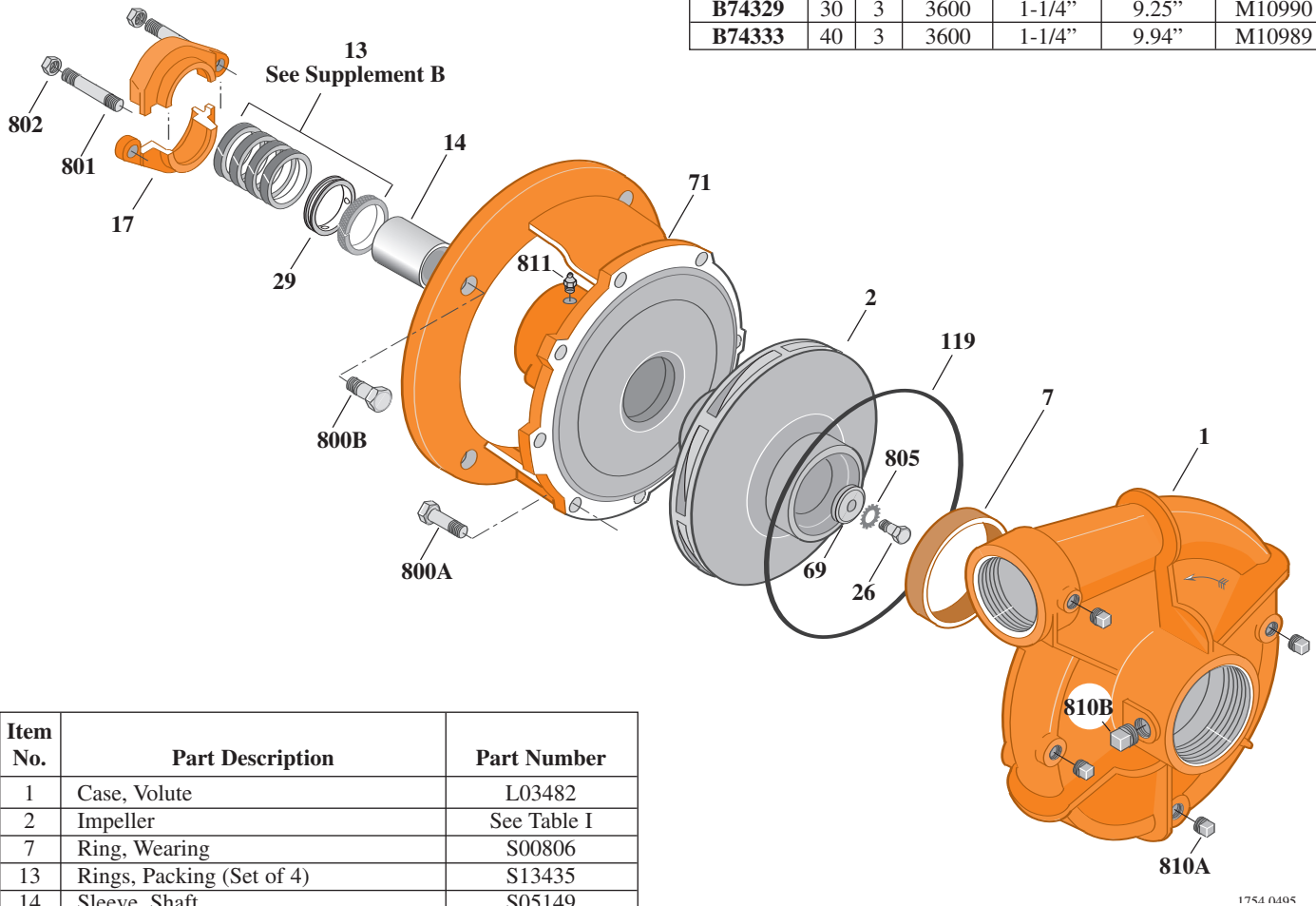
## B2EPBL

Threaded Case (NPT)

Packing Construction

TABLE I

| B/M No. | HP | PH | RPM  | "U" Dim. | Imp. Dia. | Imp. No. |
|---------|----|----|------|----------|-----------|----------|
| B74329  | 30 | 3  | 3600 | 1-1/4"   | 9.25"     | M10990   |
| B74333  | 40 | 3  | 3600 | 1-1/4"   | 9.94"     | M10989   |



| Item No. | Part Description                     | Part Number  |
|----------|--------------------------------------|--------------|
| 1        | Case, Volute                         | L03482       |
| 2        | Impeller                             | See Table I  |
| 7        | Ring, Wearing                        | S00806       |
| 13       | Rings, Packing (Set of 4)            | S13435       |
| 14       | Sleeve, Shaft                        | S05149       |
| 17       | Gland, Packing                       | S12034       |
| 26       | Screw, Impeller 1/2 - 13 x 1-1/4"    | S23621       |
| 29       | Ring, Lantern                        | S19200       |
| 32       | Key, 1/4 x 2-1/4" (See Note)         | S23677       |
| 69       | Washer, Impeller                     | S06319       |
| 71       | Bracket                              | See Table II |
| 119      | O-Ring                               | S13760       |
| 800A     | Capscrew, 1/2 - 13 x 1-1/4" (8 Req.) | S26914       |
| 800B     | Capscrew, 5/8 - 11 x 1-1/2" (4 Req.) | S26999       |
| 801      | Stud, 3/8 - 16 x 2-1/2" (2 Req.)     | S04438       |
| 802      | Nut, Hex 3/8 - 16 (2 Req.)           | S23343       |
| 805      | Washer, Lock                         | S23038       |
| 810A     | Plug, Pipe 1/4 NPT (4 Req.)          | S23715       |
| 810B     | Plug, Pipe 1/2 NPT                   | S23717       |
| 811      | Fitting, Grease                      | S23700       |

TABLE II

| HP | PH | Bracket No. | "AK" Fit | "U" Dim. | Motor Frame |
|----|----|-------------|----------|----------|-------------|
| 30 | 3  | L03712      | 12-1/2"  | 1-1/4"   | 284JP       |
| 40 | 3  | L03712      | 12-1/2"  | 1-1/4"   | 286JP       |

**NOTE:** For an explanation of the tabulated material found on this page and for impeller key location, refer to *Supplement A* located at the beginning of this section.