



# Type "B" Single Stage Centrifugal Pump Electric Motor Drive

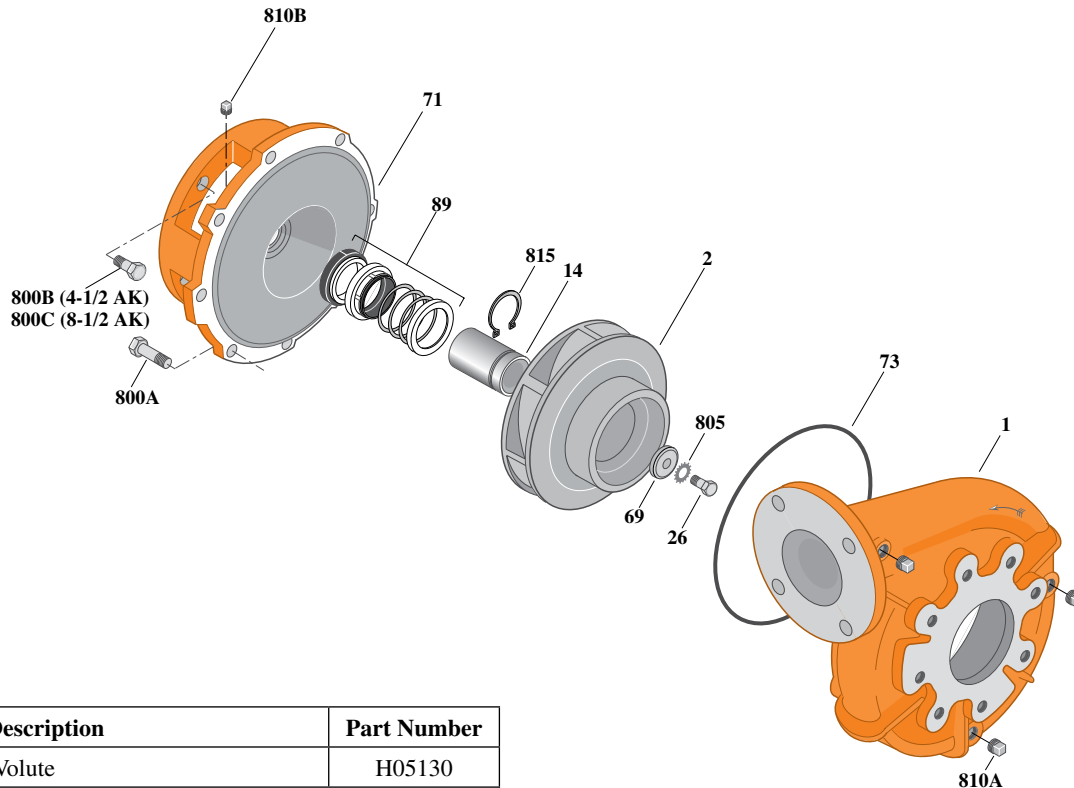
|                   |              |
|-------------------|--------------|
| Section           | CC           |
| Page              | 190.7        |
| Date              | July 1, 2011 |
| Supersedes 1/1/04 |              |

## CAST IRON IMPELLER

## B3ZPMS

### Flanged Case

### Mechanical Shaft Seal Construction



| Item | Part Description  | Part Number  |
|------|---|--------------|
| 1    | Case, Volute  | H05130       |
| 2    | Impeller  | See Table I  |
| 14   | Sleeve, Shaft   | S19310L      |
| 26   | Screw, Impeller 3/8 - 16 x 1"   | S23566       |
| 32   | Key, 3/16 x 1-1/4" (See Note 1)   | S34383       |
| 69   | Washer, Impeller  | S06314       |
| 71   | Bracket   | See Table II |
| 73   | O-Ring (See Note 2)   | M14943       |
| 89   | Seal, Mechanical Shaft  | S32014       |
| 800A | Capscrew, 3/8 - 16 x 1" (12 Req.) (4-1/2 AK) (Use for Motor and Volute) | S26826       |
| 800A | Capscrew, 3/8 - 16 x 1" (8 Req.) (8-1/2 AK) (Use for Volute Only)       | S26826       |
| 800B | Capscrew, 1/2 - 13 x 1" (4 Req.)  | S26912       |
| 805  | Washer, Lock  | S23036       |
| 810  | Plug, Pipe 1/4 NPT (3 Req.)   | S23715       |
| 815  | Ring, Retaining   | S11207       |

Table I

| B/M No. | HP  | PH | RPM  | "U" Dim. | Imp. Dia. | Imp. No. |
|---------|-----|----|------|----------|-----------|----------|
| B70169  | 3   | 1  | 1800 | 7/8"     | 6.06"     | M07709   |
| B70244  | 3   | 3  | 1800 | 7/8"     | 6.06"     | M07709   |
| B70172  | 5   | 1  | 1800 | 7/8"     | 7.00"     | M07710   |
| B70245  | 5   | 3  | 1800 | 7/8"     | 7.00"     | M07710   |
| B70175  | 7.5 | 1  | 1800 | 7/8"     | 7.88"     | M07764   |
| B70247  | 7.5 | 3  | 1800 | 7/8"     | 7.88"     | M07764   |
| B70178  | 10  | 1  | 1800 | 7/8"     | 8.44"     | M07765   |
| B70248  | 10  | 3  | 1800 | 7/8"     | 8.44"     | M07765   |

Table II

| HP  | PH | Bracket No. | "AK" Fit | "U" Dim. | Motor Frame |
|-----|----|-------------|----------|----------|-------------|
| 3   | 1  | L05332      | 4-1/2"   | 7/8"     | 184JM       |
| 3   | 3  | L05332      | 4-1/2"   | 7/8"     | 182JM       |
| 5   | 1  | L05331      | 8-1/2"   | 7/8"     | 213JM       |
| 5   | 3  | L05332      | 4-1/2"   | 7/8"     | 184JM       |
| 7.5 | 1  | L05331      | 8-1/2"   | 7/8"     | 215JM       |
| 7.5 | 3  | L05331      | 8-1/2"   | 7/8"     | 213JM       |
| 10  | 1  | L05331      | 8-1/2"   | 7/8"     | 215JM       |
| 10  | 3  | L05331      | 8-1/2"   | 7/8"     | 215JM       |

**NOTE 1:** For an explanation of the tabulated material found on this page and for impeller key location, refer to *Supplement A* located at the beginning of this section.  
**NOTE 2:** Also accepts gasket S05126 as replacement for o-ring. See *Supplement E* located at the beginning of this section.