

BALDOR® • ***RELIANCE***

Product Information Packet

AOM3458

.33HP, 1725RPM, 3PH, 60HZ, 48, 3410M, TEAO, F1

Part Detail							
Revision:	Q	Status:	PRD/A	Change #:		Proprietary:	No
Type:	AC	Prod. Type:	3410M	Elec. Spec:	34WGW137	CD Diagram:	CD0005
Enclosure:	TEAO	Mfg Plant:		Mech. Spec:	34K099	Layout:	34LYK099
Frame:	48	Mounting:	F1	Poles:	04	Created Date:	
Base:	RG	Rotation:	R	Insulation:	F	Eff. Date:	10-19-2016
Leads:	9#18 36" LG Y					Replaced By:	
Literature:		Elec. Diagram:					

Nameplate NP1256L										
CAT.NO.	AOM3458									
SPEC.	34K99W137									
HP	.33 AIR OVER									
VOLTS	230/460									
AMP	1.7/.85									
RPM	1725									
FRAME	48				HZ	60			PH	3
SER.F.	1.00		CODE	M	DES	B		CLASS	F	
NEMA-NOM-EFF	68		PF	53						
RATING	40C AMB-CONT									
CC								USABLE AT 208V	1.9	
DE	6203				ODE	6203				
ENCL	TEAO		SN							
	800 FPM AT 44 CFM									

Parts List		
Part Number	Description	Quantity
SA008238	SA 34K99W137	1.000 EA
RA004685	RA 34K99W137	1.000 EA
NS2512A01	INSULATOR, CONDUIT BOX X	1.000 EA
34CB3002A	CB CAST W/.88 DIA HOLE	1.000 EA
34GS1029A01	GASKET, CONDUIT BOX	1.000 EA
51XB1016A07	10-16 X 7/16 HXWSSLD SERTYB	2.000 EA
11XW1032G06	10-32 X .38, TAPTITE II, HEX WSHR SLTD U	1.000 EA
34EP3100A03SP	FR ENDPLATE, MACH	1.000 EA
HW5100A03SP	WAVY WASHER (W1543-017)	1.000 EA
34EP3102A02SP	FR/PU ENDPLATE, MACH	1.000 EA
XY1032A02	10-32 HEX NUT DIRECTIONAL SERRATION	4.000 EA
34CB4517	CB LID 4 MTG HOLES .22 DIA STAMPED, FOR	1.000 EA
34GS1031A01	GASKET, FLAT CONDUIT BOX LID (LEXIDE)	1.000 EA
51XW0832A07	8-32 X .44, TAPTITE II, HEX WSHR SLTD SE	4.000 EA
MG1000G27	MED CHARCOAL METALLIC GREY 400-0096	0.014 GA
10XF0440S02	04-40 X 1/8 TYPE F HEX HD STAINLESS STIC	2.000 EA
HA3100A12	THRUBOLT 10-32 X 7.375	4.000 EA
LC0005E01	CONN.DIA./WARNING LABEL (LC0005/LB1119N)	1.000 EA
NP1256L	ALUM UL CSA CC	1.000 EA
34PA1002	PKG GRP, PRINT PK1001A01	1.000 EA

Accessories		
Part Number	Description	Multiplier
34-3900T	C-FACE KIT	A8

AC Induction Motor Performance Data
Record # 6892 - Typical performance - not guaranteed values

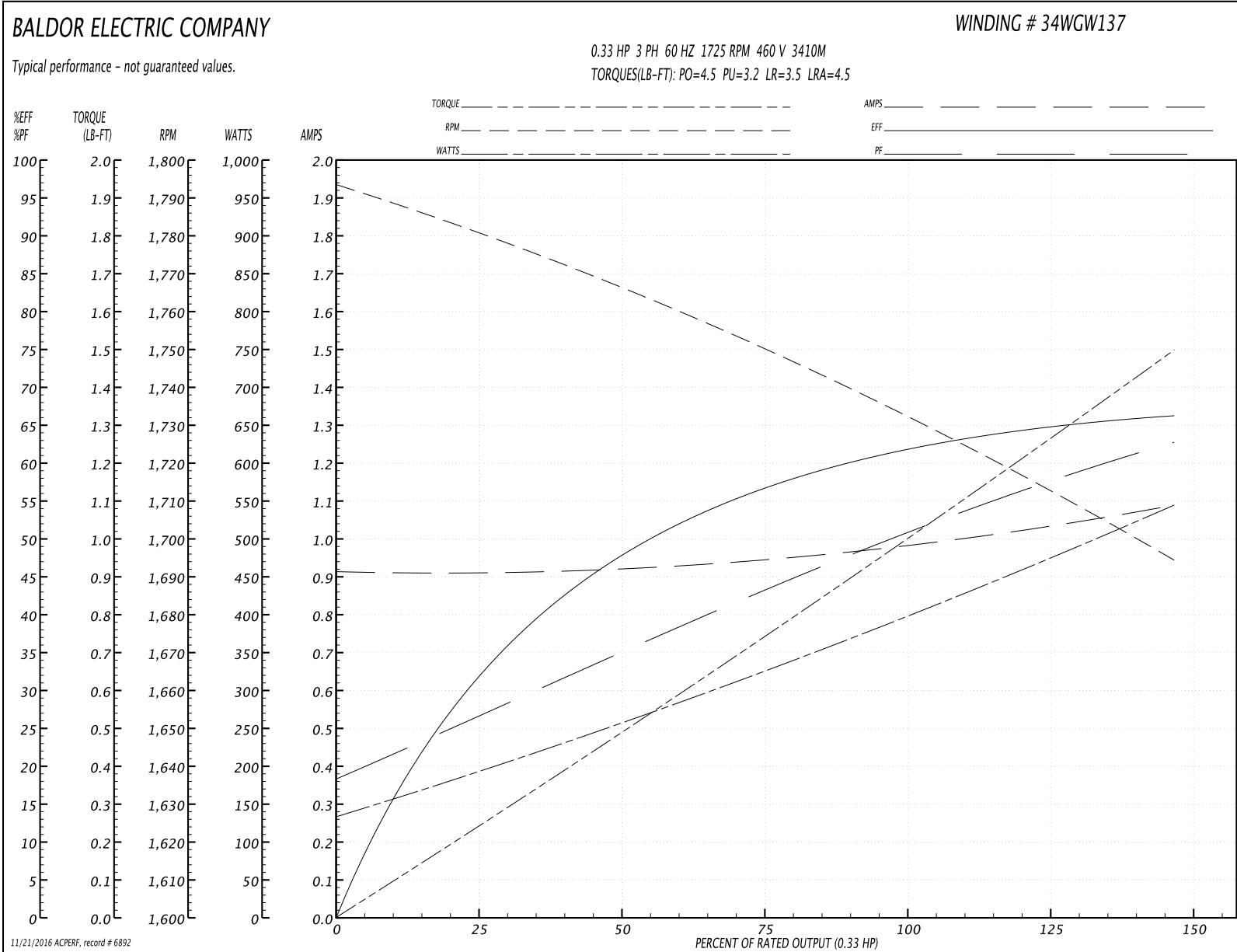
Winding: 34WGW137-R001	Type: 3410M	Enclosure: TEAO
-------------------------------	--------------------	------------------------

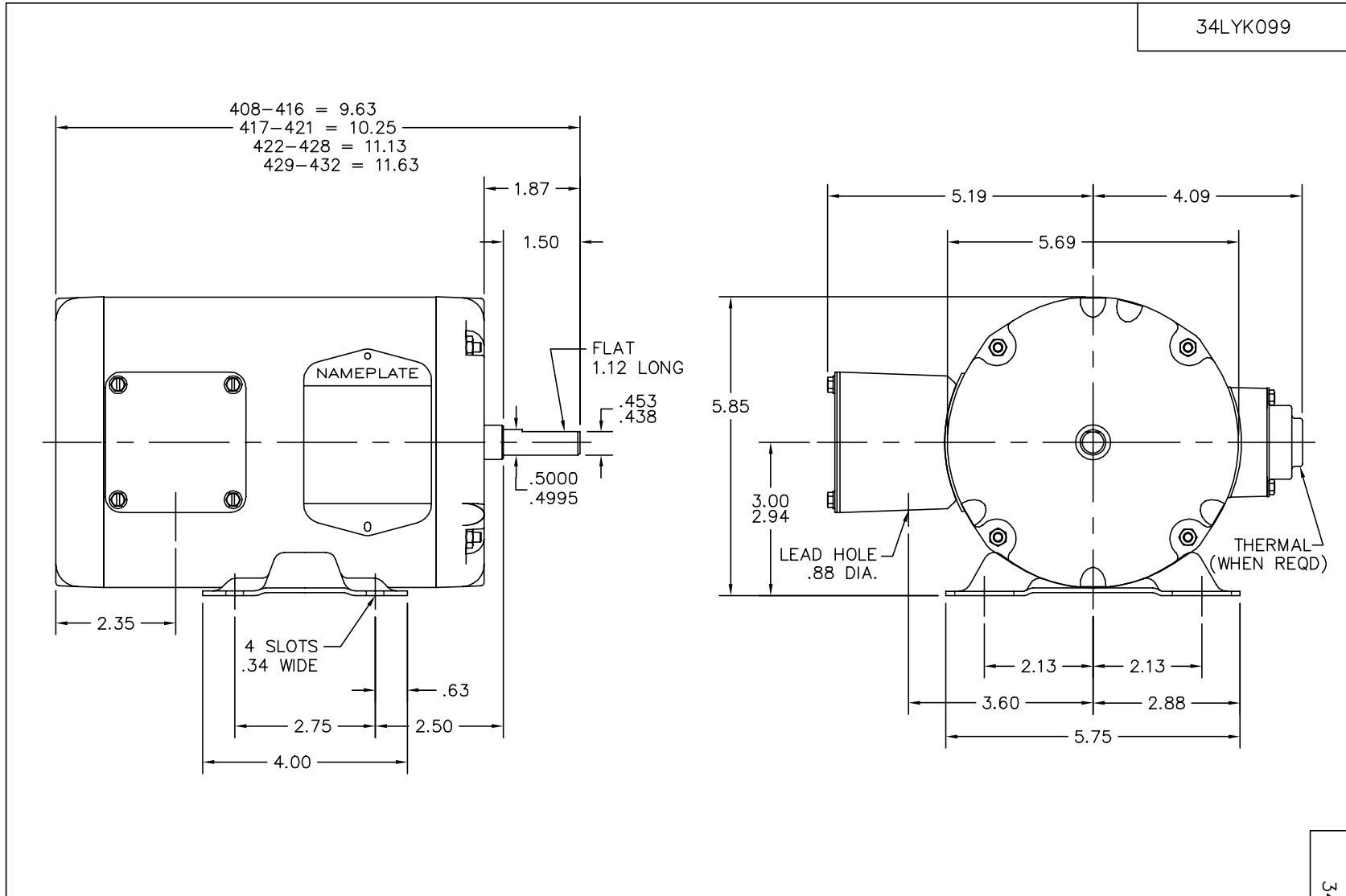
Nameplate Data				460 V, 60 Hz: High Voltage Connection	
Rated Output (HP)	.33 AIR OVER			Full Load Torque	1 LB-FT
Volts	230/460			Start Configuration	direct on line
Full Load Amps	1.7/.85			Breakdown Torque	4.5 LB-FT
R.P.M.	1725			Pull-up Torque	3.2 LB-FT
Hz	60	Phase	3	Locked-rotor Torque	3.5 LB-FT
NEMA Design Code	B	KVA Code	M	Starting Current	4.5 A
Service Factor (S.F.)	1			No-load Current	0.914 A
NEMA Nom. Eff.	68	Power Factor	53	Line-line Res. @ 25°C	51.6 Ω
Rating - Duty	40C AMB-CONT			Temp. Rise @ Rated Load	60°C
				Locked-rotor Power Factor	72
				Rotor inertia	0.0238 LB-FT ²

Load Characteristics 460 V, 60 Hz, 0.33 HP

% of Rated Load	25	50	75	100	125	150
Power Factor	26	35	43	50	57	64
Efficiency	32	48	57	62	65	66
Speed	1780	1765	1750	1733	1714	1694
Line amperes	0.91	0.92	0.95	0.98	1.03	1.09

Performance Graph at 460V, 60Hz, 0.33HP Typical performance - Not guaranteed values





CUSTOMER IS RESPONSIBLE FOR DETERMINING THAT MOTOR PERFORMANCE IS SUITABLE IN THE APPLICATION.

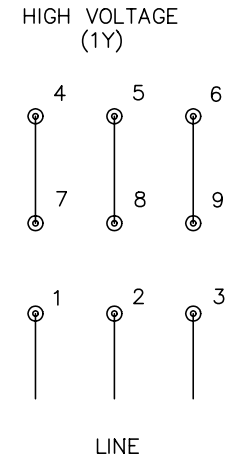
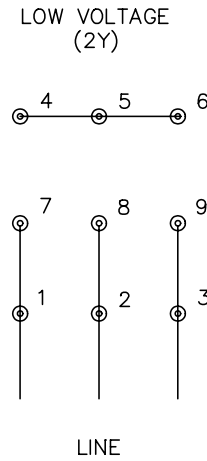
REV. DESC: UPDATE GRAPHIC & ACAD			
REV. LTR: F	VERSION: 01	TDR: 000000358220	
660X17C 34LYK099	FILE: \AAA\00026\163	REVISED: 07:24:22 02/28/2005	
	MTL: -	BY: ENROSTO	

BALDOR ELECTRIC Co.

STD HORZ MODEL 34M NEMA 48 TEAO

34LYK099

CD0005



NOTES:

1. INTERCHANGE ANY TWO LINE LEADS TO REVERSE ROTATION.
2. OPTIONAL THERMOSTATS ARE PROVIDED WHEN SPECIFIED.
3. ACTUAL NUMBER OF INTERNAL PARALLEL CIRCUITS MAY BE A MULTIPLE OF THOSE SHOWN ABOVE.
4. LEAD COLORS ARE OPTIONAL. LEADS MUST ALWAYS BE NUMBERED AS SHOWN.

REV. DESC: REVISE TO SHOW OPTIONAL COLORS			
REV. LTR: E	BY: JLP	REVISED: 01/19/99 10:15	TDR: 0171435
90000		FILE: AAA00005140	MDL: -
		MTL: -	

BALDOR ELECTRIC Co.

3PH, DV, 9 LEADS

CD0005