

BALDOR® • *RELIANCE*

Product Information Packet

EJPM2542T

50HP,3550RPM,3PH,60HZ,324JP,4248M,OPSB,F

| Part Detail | | | | | | | |
|-------------|-------|----------------|-------|-------------|----------|---------------|------------|
| Revision: | D | Status: | PRD/A | Change #: | | Proprietary: | No |
| Type: | AC | Prod. Type: | 4248M | Elec. Spec: | 42WGW284 | CD Diagram: | CD0180 |
| Enclosure: | OPSB | Mfg Plant: | | Mech. Spec: | 42E210 | Layout: | 42LYE210 |
| Frame: | 324JP | Mounting: | F1 | Poles: | 02 | Created Date: | 05-11-2012 |
| Base: | RG | Rotation: | R | Insulation: | F | Eff. Date: | 08-10-2015 |
| Leads: | 9#8 | | | | | Replaced By: | |
| Literature: | | Elec. Diagram: | | | | | |

| Nameplate NP2138L | | | | | | | | | | | |
|-------------------|--------------|----|----------|----------------|------------|-------------------------|----|-----------|------|--------|------|
| CAT.NO. | EJPM2542T | | | P/N | | | | ENCLOSURE | OPSB | | |
| SPEC. | 42E210W284G1 | | CC | 010A | FRAME | 324JP | | S/N | | | |
| HP | 50 | | | CLASS | F | HZ | 60 | | | | |
| RPM | 3550 | | PH | 3 | DES | B | | | | | |
| VOLT | 230/460 | | | | KVA-CODE | H | | ODE BRG | 6311 | DE BRG | 6312 |
| AMP | 116/58 | | | USABLE AT 208V | | | | | | | |
| RATING | 40C AMB-CONT | | | GREASE | POLYREX EM | | | | | | |
| NEMA-NOM-EFF | 93 | PF | 87 | SER.F. | 1.15 | | | | | | |
| HTR-VOLTS | | | HTR-AMPS | | | MAX. SPACE HEATER TEMP. | | | | | |

| Parts List | | |
|----------------|--|----------|
| Part Number | Description | Quantity |
| SA244390 | SA 42E210W284G1 | 1.000 EA |
| RA231276 | RA 42E210W284G1 | 1.000 EA |
| S/P107-000-004 | SUPER-E(284 FR. & UP)-CL PLANT,POLYREX E | 1.000 EA |
| HA6360 | LIFTING LUG FOR 42 FRAME MOTORS. | 2.000 EA |
| HA6017 | CAST ADAPTER, 40,42 KOBX | 1.000 EA |
| 19XW3118A12 | .31-18 X .75 HEX WASHER HEAD TAPTITE II | 2.000 EA |
| HW1001A31 | LOCKWASHER 5/16, ZINC PLT.591 OD, .319 I | 2.000 EA |
| 10CB3001 | CONDUIT BOX CAST W/2.500 LEAD HOLE | 1.000 EA |
| 19XW3118A12 | .31-18 X .75 HEX WASHER HEAD TAPTITE II | 4.000 EA |
| HW1001A31 | LOCKWASHER 5/16, ZINC PLT.591 OD, .319 I | 4.000 EA |
| WD1000B16 | T&B CX70TN TERMINAL | 1.000 EA |
| 51XF2520A08 | SCREW, HEX SER SLT HD, ZN 1/4-20 X .50 L | 1.000 EA |
| 42EP3200A01 | FR ENDPLATE, MACH 324-6T | 1.000 EA |
| HA1108A01 | RODENT SCREEN | 1.000 EA |
| 51XW1032A06 | 10-32 X .38, TAPTITE II, HEX WSHR SLTD S | 4.000 EA |
| HW5100A13 | W4627-047 WVY WSHR | 1.000 EA |
| 42EP1300A17 | PU ENDPLATE, MACH W/RECESS FOR SLINGER, | 1.000 EA |
| HA1165A01 | RODENT SCREEN FOR 42 PU. C-FACE EP (INSI | 1.000 EA |
| 51XW1032A06 | 10-32 X .38, TAPTITE II, HEX WSHR SLTD S | 4.000 EA |
| 10XN3118K40 | 5/16-18 X 2.50" HEX HD, GRADE 5 | 4.000 EA |
| HW1001A31 | LOCKWASHER 5/16, ZINC PLT.591 OD, .319 I | 4.000 EA |
| XY5013A12 | NUT,1/2-13,HEX,STEEL,ZINCPLATED | 8.000 EA |
| 10CB3500SP | CONDUIT BOX LID, CAST | 1.000 EA |
| 51XW2520A12 | .25-20 X .75, TAPTITE II, HEX WSHR SLTD | 4.000 EA |

| Parts List (continued) | | |
|-------------------------------|--|-----------------|
| Part Number | Description | Quantity |
| HA2009A04 | 39-81 SLINGER (STERLING) | 1.000 EA |
| 80XN1032A06 | 10-32 X 3/8 SET SC HEX SOCK | 1.000 EA |
| HW2501E18 | KEY, 1/4 SQ X 2.000 | 1.000 EA |
| LB1115N | LABEL,LIFTING DEVICE (ON ROLLS) | 1.000 EA |
| MN416A01 | TAG-INSTAL-MAINT no wire (1000/bx) 11/14 | 1.000 EA |
| HW4500A03 | GREASE FITTING, .125 NPT 1610(ALEMITE) 8 | 1.000 EA |
| HW4500A17 | 317400 ALEMITE GREASE RELIEF | 1.000 EA |
| HA4051A00 | PLASTIC CAP FOR GREASE FITTING | 1.000 EA |
| MJ1000A02 | GREASE, POLYREX EM EXXON (USe 4824-15A) | 0.030 LB |
| HW4500A03 | GREASE FITTING, .125 NPT 1610(ALEMITE) 8 | 1.000 EA |
| HW4500A17 | 317400 ALEMITE GREASE RELIEF | 1.000 EA |
| HA4051A00 | PLASTIC CAP FOR GREASE FITTING | 1.000 EA |
| MG1000Y03 | MUNSELL 2.53Y 6.70/ 4.60, GLOSS 20, | 0.080 GA |
| 85XU0407S04 | 4X1/4 U DRIVE PIN STAINLESS | 4.000 EA |
| 42AD2001C01 | BAFFLE PLATE 42 OPEN, SLOTTED BAND MTRS | 1.000 EA |
| 42AD2001C01 | BAFFLE PLATE 42 OPEN, SLOTTED BAND MTRS | 1.000 EA |
| HA3151A02 | THRUBOLT STUD 1/2-13 X 19.25 | 4.000 EA |
| LB1119N | WARNING LABEL | 1.000 EA |
| LC0181 | CONNECTION LABEL | 1.000 EA |
| NP2138L | ALUM SUPER-E UL CSA-EEV PREM CC (300 | 1.000 EA |
| 42PA1000 | PACKAGING GROUP PRINT PK1024A06 | 1.000 EA |

AC Induction Motor Performance Data

Record # 45569 - Typical performance - not guaranteed values

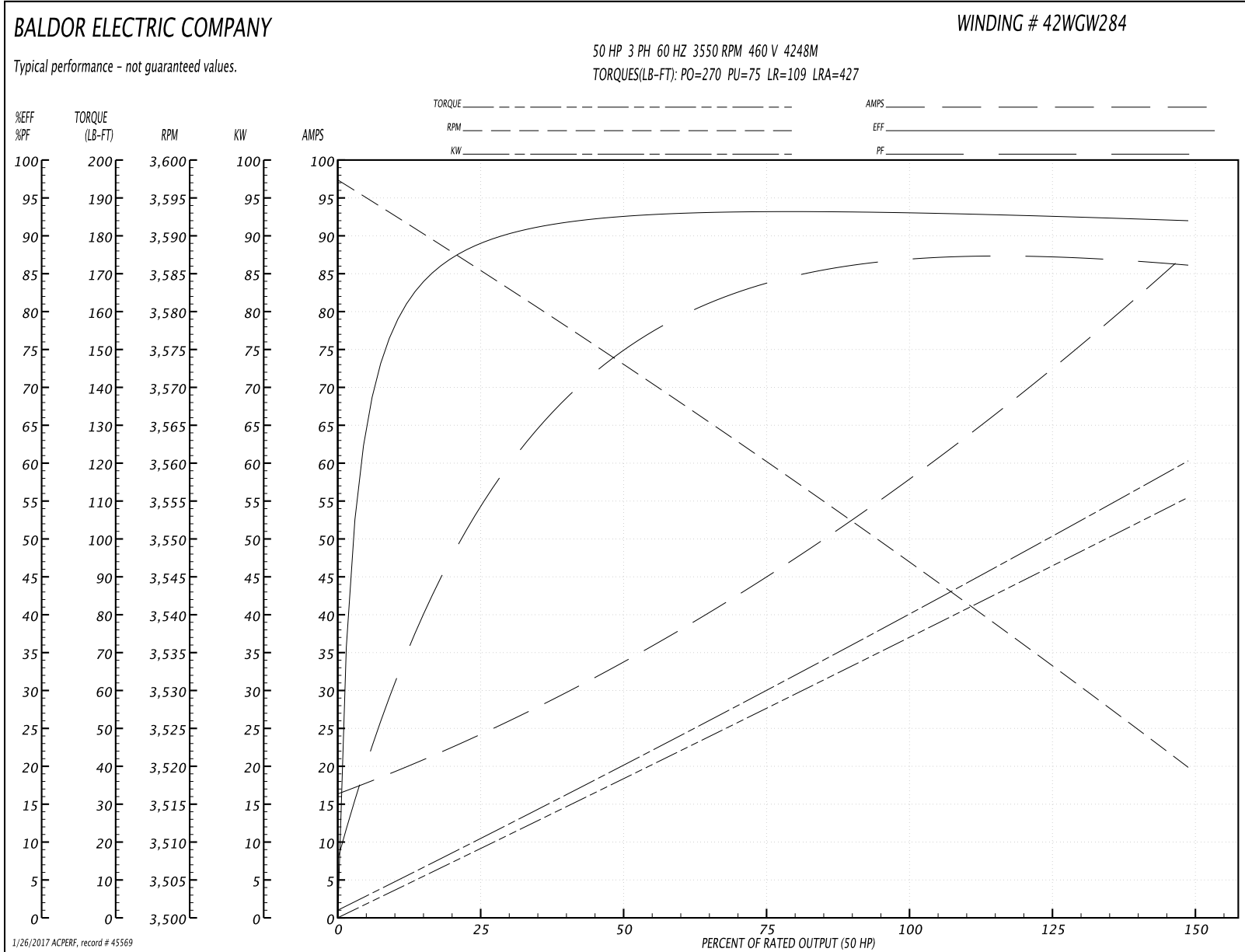
| | | |
|-------------------------------|--------------------|------------------------|
| Winding: 42WGW284-R002 | Type: 4248M | Enclosure: OPSB |
|-------------------------------|--------------------|------------------------|

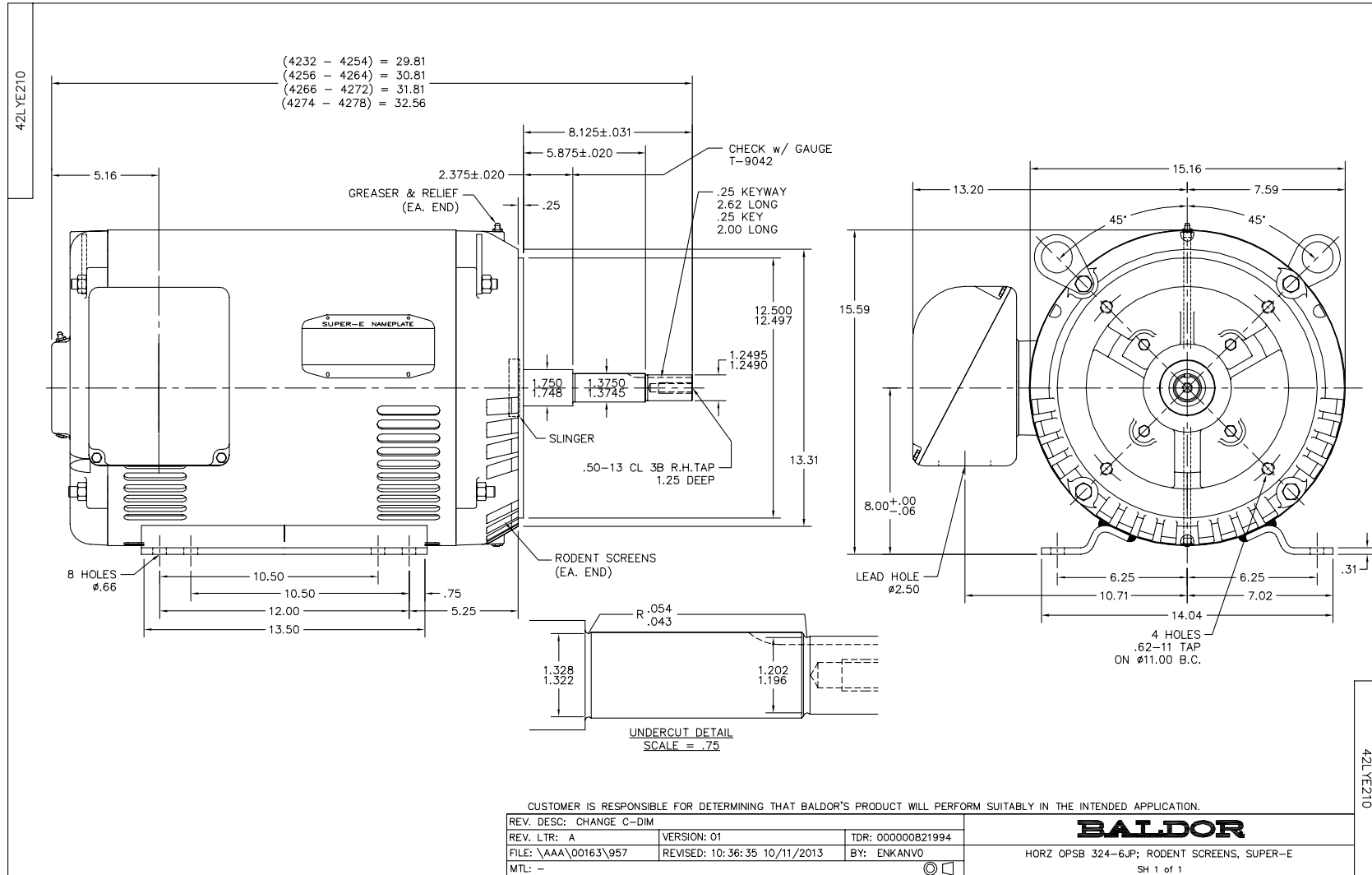
| Nameplate Data | | | | 460 V, 60 Hz: High Voltage Connection | |
|-----------------------|--------------|--------------|----|--|-------------------------|
| Rated Output (HP) | 50 | | | Full Load Torque | 74 LB-FT |
| Volts | 230/460 | | | Start Configuration | direct on line |
| Full Load Amps | 116/58 | | | Breakdown Torque | 270 LB-FT |
| R.P.M. | 3550 | | | Pull-up Torque | 75 LB-FT |
| Hz | 60 | Phase | 3 | Locked-rotor Torque | 109 LB-FT |
| NEMA Design Code | B | KVA Code | H | Starting Current | 427 A |
| Service Factor (S.F.) | 1.15 | | | No-load Current | 17.1 A |
| NEMA Nom. Eff. | 93 | Power Factor | 87 | Line-line Res. @ 25°C | 0.125 Ω |
| Rating - Duty | 40C AMB-CONT | | | Temp. Rise @ Rated Load | 20°C |
| S.F. Amps | | | | Temp. Rise @ S.F. Load | 28°C |
| | | | | Locked-rotor Power Factor | 23 |
| | | | | Rotor inertia | 3.74 LB-FT ² |

Load Characteristics 460 V, 60 Hz, 50 HP

| % of Rated Load | 25 | 50 | 75 | 100 | 125 | 150 | S.F. |
|-----------------|------|------|------|------|------|------|-------|
| Power Factor | 57 | 76 | 60 | 87 | 87 | 86 | 87 |
| Efficiency | 89.8 | 92.8 | 93.3 | 93 | 92.2 | 92.2 | 91.4 |
| Speed | 3583 | 3572 | 3561 | 3548 | 3534 | 3519 | 3540 |
| Line amperes | 23.2 | 33.6 | 45.6 | 58 | 72.7 | 87.4 | 66.82 |

Performance Graph at 460V, 60Hz, 50.0HP Typical performance - Not guaranteed values

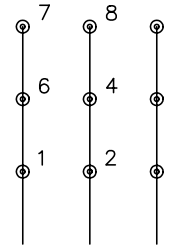




CD0180

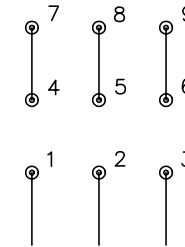


LOW VOLTAGE
(2D)



LINE

HIGH VOLTAGE
(1D)



LINE

NOTES:

1. INTERCHANGE ANY TWO LINE LEADS TO REVERSE ROTATION.
2. OPTIONAL THERMOSTATS ARE PROVIDED WHEN SPECIFIED.
3. ACTUAL NUMBER OF INTERNAL PARALLEL CIRCUITS MAY BE A MULTIPLE OF THOSE SHOWN ABOVE.
4. LEAD COLORS ARE OPTIONAL. LEADS MUST ALWAYS BE NUMBERED AS SHOWN.

REV. DESC: REVISE TO SHOW OPTIONAL COLORS

REV. LTR: C BY: JLP

REVISED: 01/21/99 2:28

TDR: 0171435

0810D0

FILE: AAA00005148

MDL: -

MTL: -

BALDOR ELECTRIC Co.

3PH, DV, 9 LEADS, DELTA CONNECTION

CD0180