

BALDOR® • ***RELIANCE***

Product Information Packet

L3608T

5HP,3450RPM,1PH,60HZ,184T,3640LC,TEFC,F1

| Part Detail | | | | | | | |
|-------------|---------------------|----------------|--------|-------------|----------|---------------|------------|
| Revision: | AM | Status: | PRD/A | Change #: | | Proprietary: | No |
| Type: | AC | Prod. Type: | 3640LC | Elec. Spec: | 36WGW914 | CD Diagram: | CD0017A02 |
| Enclosure: | TEFC | Mfg Plant: | | Mech. Spec: | 36E004 | Layout: | 36LYE004 |
| Frame: | 184T | Mounting: | F1 | Poles: | 02 | Created Date: | |
| Base: | RG | Rotation: | R | Insulation: | F | Eff. Date: | 07-06-2016 |
| Leads: | 2#14 A PH,2#16 B PH | | | | | Replaced By: | |
| Literature: | | Elec. Diagram: | | | | | |

| Nameplate NP1256L | | | | | | | | | | |
|-------------------|--------------|--|------|----|-----|------|--|----------------|----|---|
| CAT.NO. | L3608T | | | | | | | | | |
| SPEC. | 36E04W914 | | | | | | | | | |
| HP | 5 | | | | | | | | | |
| VOLTS | 230 | | | | | | | | | |
| AMP | 19.5 | | | | | | | | | |
| RPM | 3450 | | | | | | | | | |
| FRAME | 184T | | | | HZ | 60 | | | PH | 1 |
| SER.F. | 1.00 | | CODE | G | DES | L | | CLASS | F | |
| NEMA-NOM-EFF | 83 | | PF | 99 | | | | | | |
| RATING | 40C AMB-CONT | | | | | | | | | |
| CC | | | | | | | | USABLE AT 208V | 22 | |
| DE | 6206 | | | | ODE | 6205 | | | | |
| ENCL | TEFC | | SN | | | | | | | |

| Parts List | | |
|---------------|--|----------|
| Part Number | Description | Quantity |
| SA034453 | SA 36E04W914 | 1.000 EA |
| RA030481 | RA 36E04W914 | 1.000 EA |
| 36CB3004 | 36 CB CASTING W/1.09 DIA LEAD HOLE @ 6:0 | 1.000 EA |
| 36GS1000 | GASKET-CONDUIT BOX, .06 THICK #SV-330 LE | 1.000 EA |
| 51XB1016A08 | 10-16X 1/2HXWSSLD SERTYB | 2.000 EA |
| 11XW1032G06 | 10-32 X .38, TAPTITE II, HEX WSHR SLTD U | 1.000 EA |
| HW3001B01 | BRASS CUP WASHER, FOR #8 SCREW | 1.000 EA |
| 36FE3104A01 | FREP MACH ASSEMBLY FOR ROUTING | 1.000 EA |
| HW4500A01 | 1641B(ALEMITE)400 UNIV, GREASE FITT | 1.000 EA |
| 13XF0832A08 | 8-32 X.50 PAN HD,SLTD, TYPE F SCREW, ZIN | 2.000 EA |
| 36GS3000 | GASKET, CAPACITOR COVER LEXIDE | 1.000 EA |
| 10XN2520A12 | O1/4-20X 3/4 HEX HEAD CAP | 2.000 EA |
| HW5100A05 | WVY WSHR F/205 & 304 BRGS | 1.000 EA |
| 36EP3100A01SP | PUEP ASSEMBLY FOR ROUTING PURPOSES | 1.000 EA |
| HW4500A01 | 1641B(ALEMITE)400 UNIV, GREASE FITT | 1.000 EA |
| XY2520A12 | 1/4-20 HEX NUT, DIRECTIONAL SERRATIONS | 4.000 EA |
| 51XB1214A16 | 12-14X1.00 HXWSSLD SERTYB | 1.000 EA |
| 51XW1032A06 | 10-32 X .38, TAPTITE II, HEX WSHR SLTD S | 3.000 EA |
| 36CB4516 | 36 LIPPED CB LID | 1.000 EA |
| 37GS1001 | GASKET, CONDUIT BOX LID, .06 THICK LEXID | 1.000 EA |
| 51XW0832A07 | 8-32 X .44, TAPTITE II, HEX WSHR SLTD SE | 4.000 EA |
| HW2501E16 | 3KEY, 1/4 SQ X 1.750 | 1.000 EA |
| HA7000A02 | KEY RETAINER RING, 1 1/8 DIA, 1 3/8 DIA | 1.000 EA |
| 85XU0407S04 | 4X1/4 U DRIVE PIN STAINLESS | 2.000 EA |

| Parts List (continued) | | |
|-------------------------------|--|-----------------|
| Part Number | Description | Quantity |
| HA6362ZP | LIFTING LUG FOR 36 FRAME MOTORS. | 2.000 EA |
| 36CB5005A11 | CAPACITOR BOX KIT,36CB3800,EC1161C06 | 1.000 EA |
| MJ1000A02 | GREASE, POLYREX EM EXXON (USe 4824-15A) | 0.050 LB |
| MG1000G27 | MED CHARCOAL METALLIC GREY 400-0096 | 0.022 GA |
| 36FH4009A124 | IEC FH W/GRSR,GRILL,NO DIMPLES,PRIMER | 1.000 EA |
| LB1115N | LABEL,LIFTING DEVICE (ON ROLLS) | 1.000 EA |
| WD1000A15 | 3-520132-2 AMP FLAG (4M/RL NON-CANC/NON- | 4.000 EA |
| HA3101A40 | THRUBOLT 1/4-20 X 12.687 | 4.000 EA |
| 35FN3002A04SP | EXFN, PLASTIC, 6.376 OD, .906 ID W/KEY | 1.000 EA |
| SP5172A05 | 37 TYPE LC TORQ STAT SW LEAD ASSEMBLY | 1.000 EA |
| LB1119N | WARNING LABEL | 1.000 EA |
| LC0017 | CONN LABEL-1 PHASE-SINGLE VOLT-REV ROTNO | 1.000 EA |
| NP1256L | ALUM UL CSA CC | 1.000 EA |
| 36PA1001 | PKG GRP, PRINT PK1017A06 | 1.000 EA |
| MN416A01 | TAG-INSTAL-MAINT no wire (1200/bx) 11/14 | 1.000 EA |

| Accessories | | |
|--------------------|---|-------------------|
| Part Number | Description | Multiplier |
| 36-3301 | C FACE KIT | A8 |
| 36EP1304A62SP | FLANGE MTD ENDPLATE 182-4TD -ENCL (LESS | A8 |

AC Induction Motor Performance Data

Record # 10881 - Typical performance - not guaranteed values

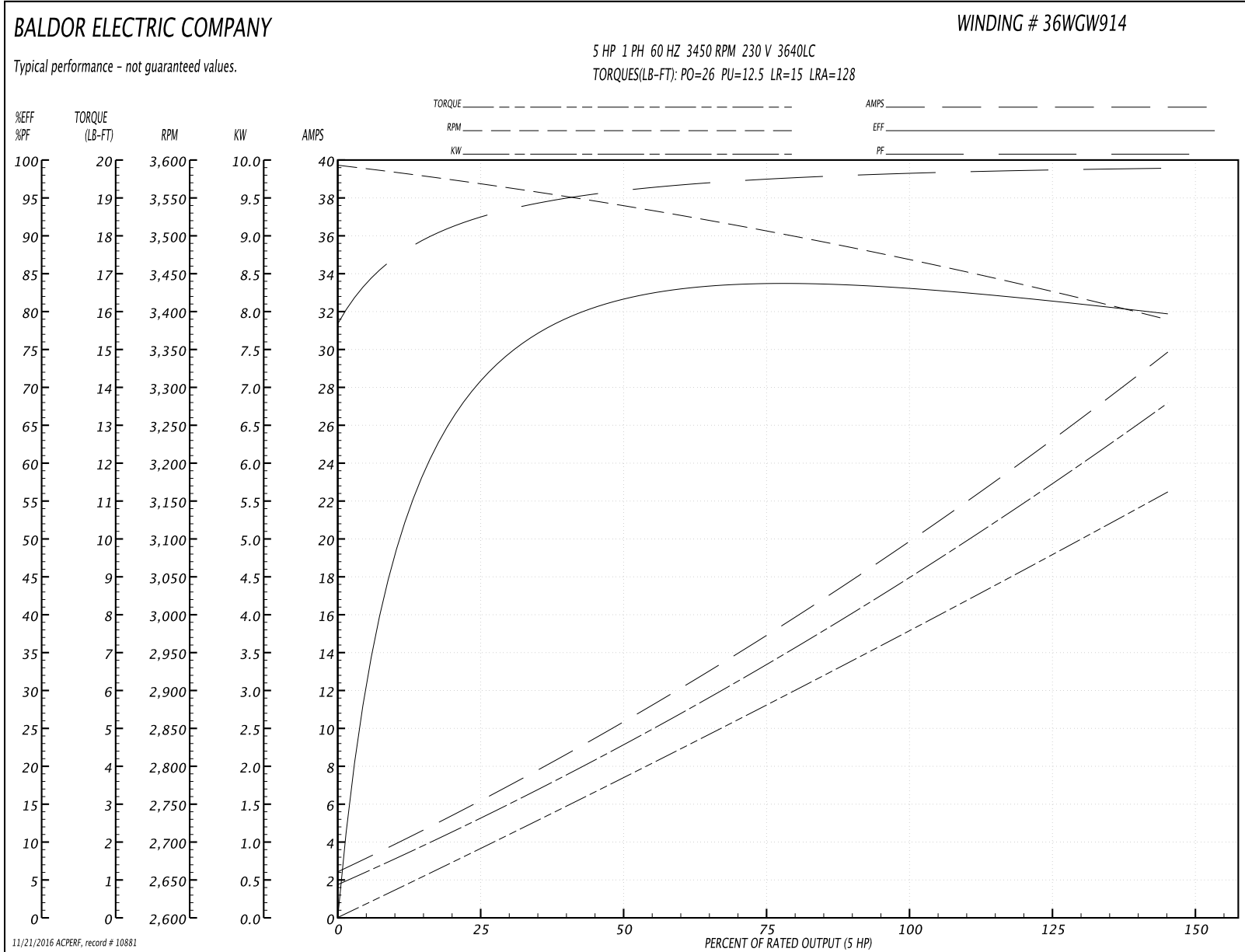
| | | |
|-------------------------------|---------------------|------------------------|
| Winding: 36WGW914-R001 | Type: 3640LC | Enclosure: TEFC |
|-------------------------------|---------------------|------------------------|

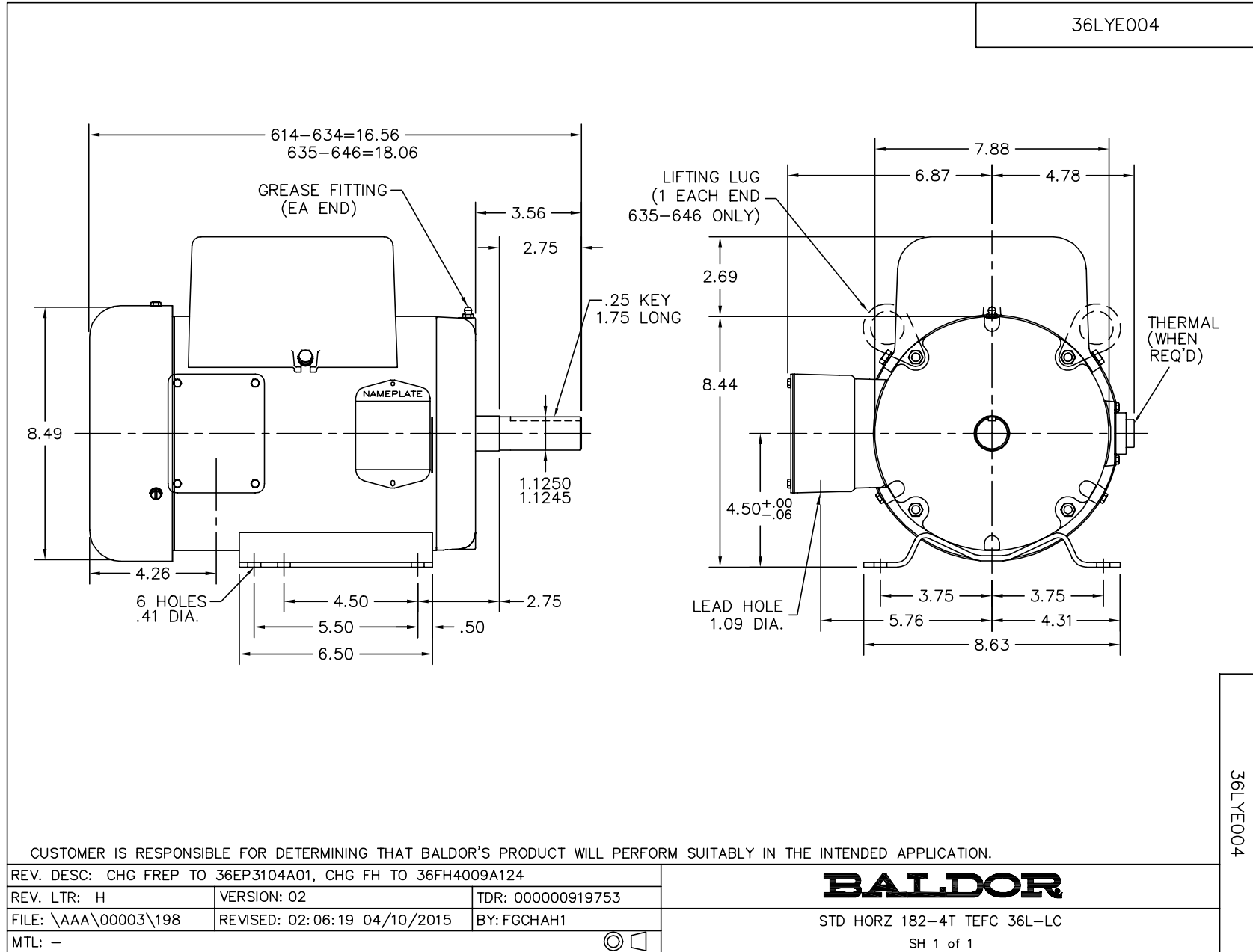
| Nameplate Data | | | | 230 V, 60 Hz: Single Voltage Motor | |
|-----------------------|--------------|--------------|----|---------------------------------------|----------------------------|
| Rated Output (HP) | 5 | | | Full Load Torque | 7.5 LB-FT |
| Volts | 230 | | | Start Configuration | direct on line |
| Full Load Amps | 19.5 | | | Breakdown Torque | 26 LB-FT |
| R.P.M. | 3450 | | | Pull-up Torque | 12.5 LB-FT |
| Hz | 60 | Phase | 1 | Locked-rotor Torque | 15 LB-FT |
| NEMA Design Code | L | KVA Code | G | Starting Current | 128 A |
| Service Factor (S.F.) | 1 | | | No-load Current | 2.3 A |
| NEMA Nom. Eff. | 83 | Power Factor | 99 | Line-line Res. @ 25°C | 0.38 Ω A Ph 1.02 Ω B Ph |
| Rating - Duty | 40C AMB-CONT | | | Temp. Rise @ Rated Load | 93°C |

Load Characteristics 230 V, 60 Hz, 5 HP

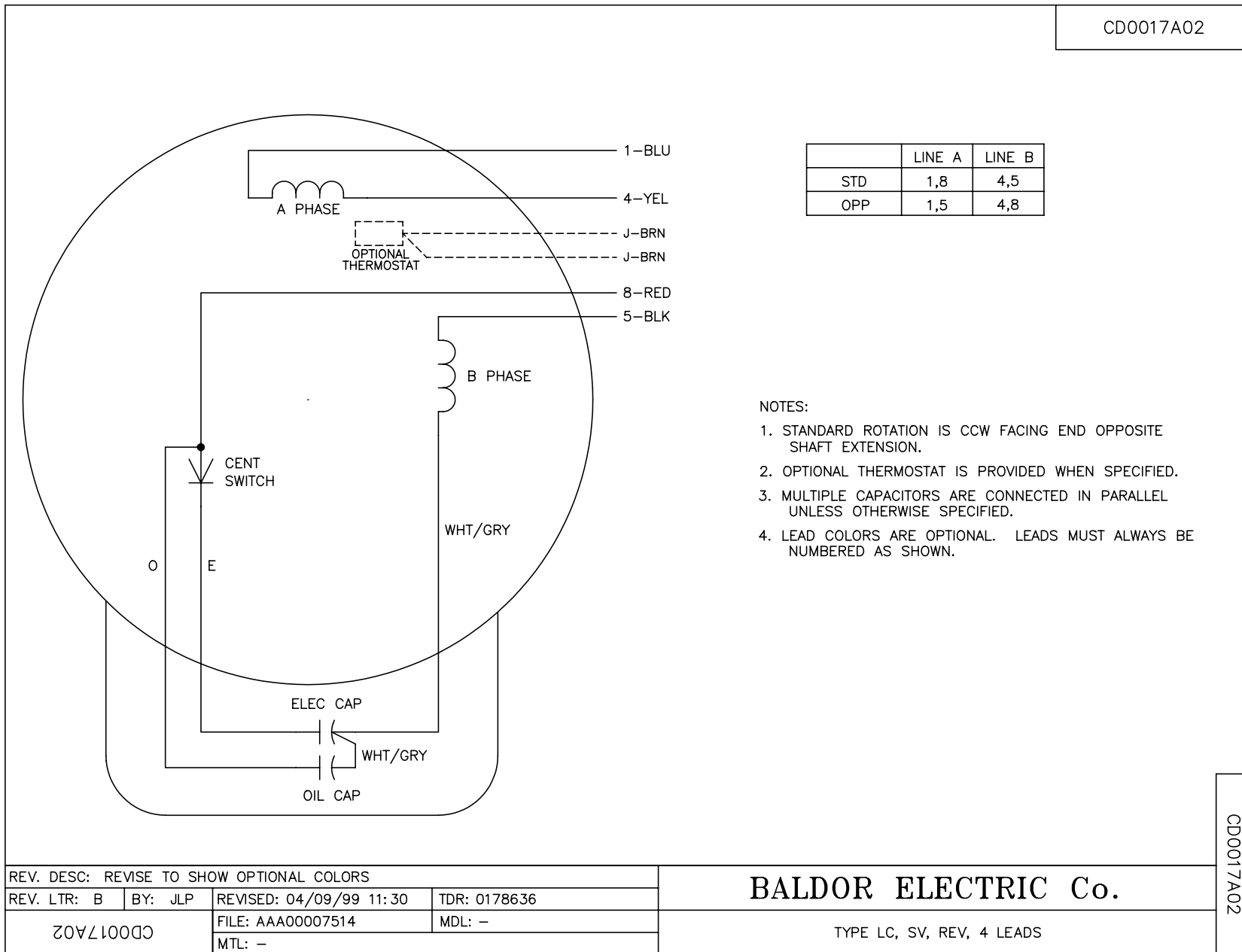
| % of Rated Load | 25 | 50 | 75 | 100 | 125 | 150 |
|-----------------|------|------|------|------|------|------|
| Power Factor | 98 | 98 | 98 | 98 | 97 | 97 |
| Efficiency | 66.4 | 81.5 | 83.9 | 83.9 | 82.1 | 79.2 |
| Speed | 3565 | 3539 | 3507 | 3472 | 3430 | 3389 |
| Line amperes | 6.5 | 10.4 | 14.9 | 19.6 | 24.7 | 29.9 |

Performance Graph at 230V, 60Hz, 5.0HP Typical performance - Not guaranteed values





CD0017A02



CD0017A02

| | | | |
|---|---------|-------------------------|--------------|
| REV. DESC: REVISE TO SHOW OPTIONAL COLORS | | | |
| REV. LTR: B | BY: JLP | REVISED: 04/09/99 11:30 | TDR: 0178636 |
| CD0017A02 | | FILE: AAA00007514 | MDL: - |
| | | MTL: - | |

BALDOR ELECTRIC Co.

TYPE LC, SV, REV, 4 LEADS