

# **BALDOR**® • **RELIANCE**

## **Product Information Packet**

# **VAOM3527**

**1HP,850RPM,3PH,60HZ,56C,3546M,TEAO,F1,N**

Part Detail							
Revision:	B	Status:	PRD/A	Change #:		Proprietary:	No
Type:	AC	Prod. Type:	3546M	Elec. Spec:	35WGX317	CD Diagram:	CD0005
Enclosure:	TEAO	Mfg Plant:		Mech. Spec:	35E2256	Layout:	35LYE2256
Frame:	56C	Mounting:	F1	Poles:	08	Created Date:	10-22-2013
Base:	N	Rotation:	R	Insulation:	F	Eff. Date:	10-21-2016
Leads:	9#18					Replaced By:	
Literature:		Elec. Diagram:					

Nameplate NP1256L										
CAT.NO.	VAOM3527									
SPEC.	35E2256X317G1									
HP	1									
VOLTS	208-230/460									
AMP	6.5-6.4/3.2									
RPM	850									
FRAME	56C				HZ	60			PH	3
SER.F.	1.00		CODE	G	DES	B		CLASS	F	
NEMA-NOM-EFF	74		PF	54						
RATING	40C AMB-CONT									
CC									USABLE AT 208V	
DE	6205				ODE	6203				
ENCL	TEAO			SN						

Parts List		
Part Number	Description	Quantity
SA271234	SA 35E2256X317G1	1.000 EA
RA257863	RA 35E2256X317G1	1.000 EA
53XT0832G07	8-32X7/16 PN STD SR TY23G X	1.000 EA
51XT1032A07	10-32X7/16 TY23 HXHD SLTD	2.000 EA
35EP3102B59	FREP ENCL, .50 NPT LEAD HOLE, MACH'D SW	1.000 EA
HW4003A01	T&B PLG-1-RD, 1/2 NPT PLUG ALUM	1.000 EA
HW5100A03SP	WAVY WASHER (W1543-017)	1.000 EA
35EP3300A33	SPL FACE MTD EP -ENCL-205 BRG	1.000 EA
51XN1032A20	10-32 X 1 1/4 HX WS SL SR	2.000 EA
35CB4500SP	TERMINAL BOX LID STAMPED	1.000 EA
35GS1002	GASKET,1/16 THICK LEXIDE	1.000 EA
51XW0832A07	8-32 X .44, TAPTITE II, HEX WSHR SLTD SE	2.000 EA
HW2501D13	KEY, 3/16 SQ X 1.375	1.000 EA
HA7000A04	KEY RETAINER 0.625 DIA SHAFTS	1.000 EA
85XU0407S04	4X1/4 U DRIVE PIN STAINLESS	2.000 EA
MJ1000A02	GREASE, POLYREX EM EXXON (USe 4824-15A)	0.050 LB
WD1000A16	2-520128-2 AMP FLAG TERMINAL(4M/RL)	9.000 EA
MG1000G27	MED CHARCOAL METALLIC GREY 400-0096	0.017 GA
HA3100A24	THRUBOLT 10-32 X 10.625	4.000 EA
SP5079A01	MODEL 35 3PH TERM PANEL CONN 9LD DUAL VO	1.000 EA
LC0005E01	CONN.DIA./WARNING LABEL (LC0005/LB1119N)	1.000 EA
NP1256L	ALUM UL CSA CC	1.000 EA
36PA1000	PKG GRP, PRINT PK1016A06	1.000 EA
PK3082	STYROFOAM CRADLE	1.000 EA

<b>Parts List (continued)</b>		
<b>Part Number</b>	<b>Description</b>	<b>Quantity</b>
MN416A01	TAG-INSTAL-MAINT no wire (1200/bx) 11/14	1.000 EA

**AC Induction Motor Performance Data**

Record # 50319 - Typical performance - not guaranteed values

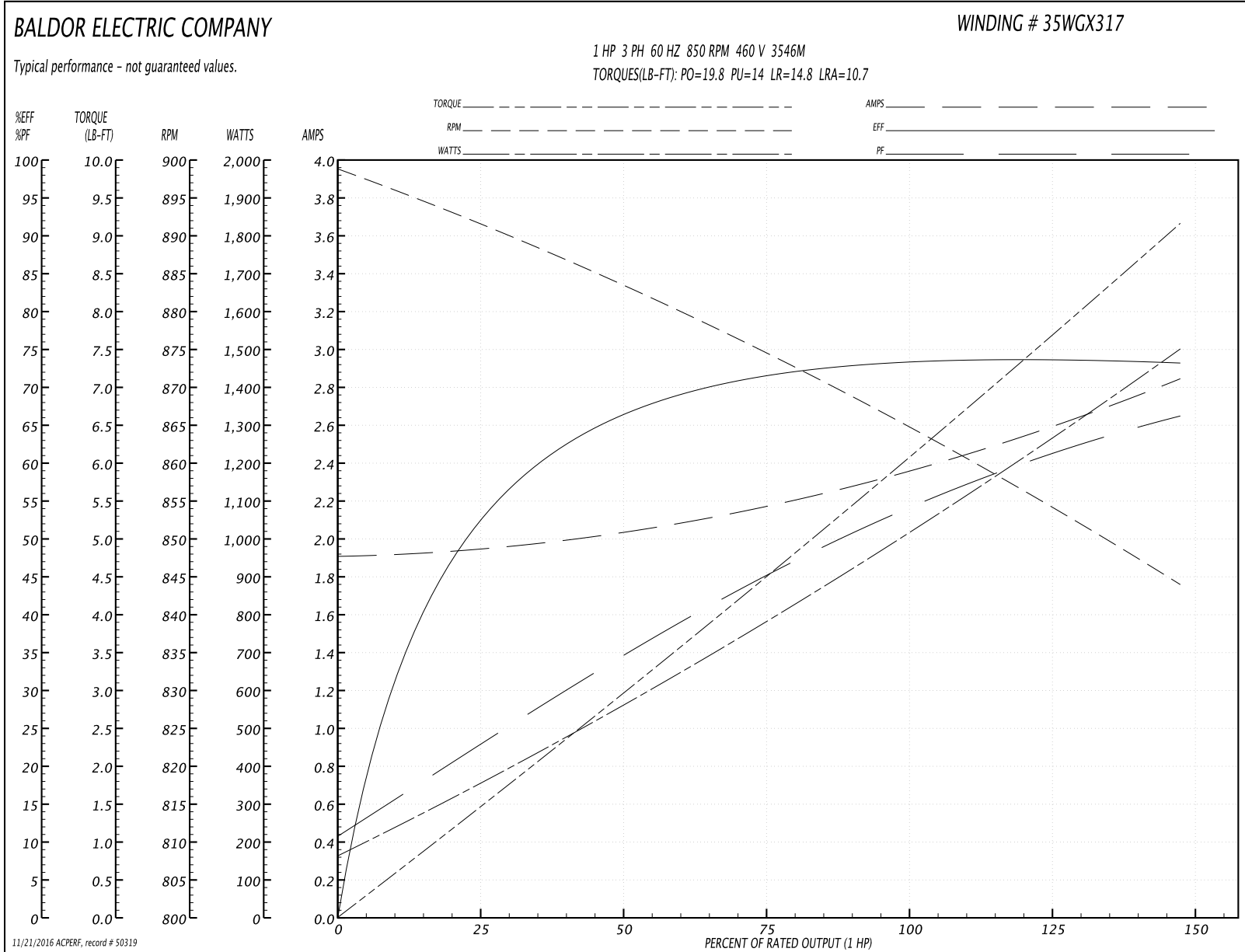
<b>Winding:</b> 35WGX317-R013	<b>Type:</b> 3546M	<b>Enclosure:</b> TEAO
-------------------------------	--------------------	------------------------

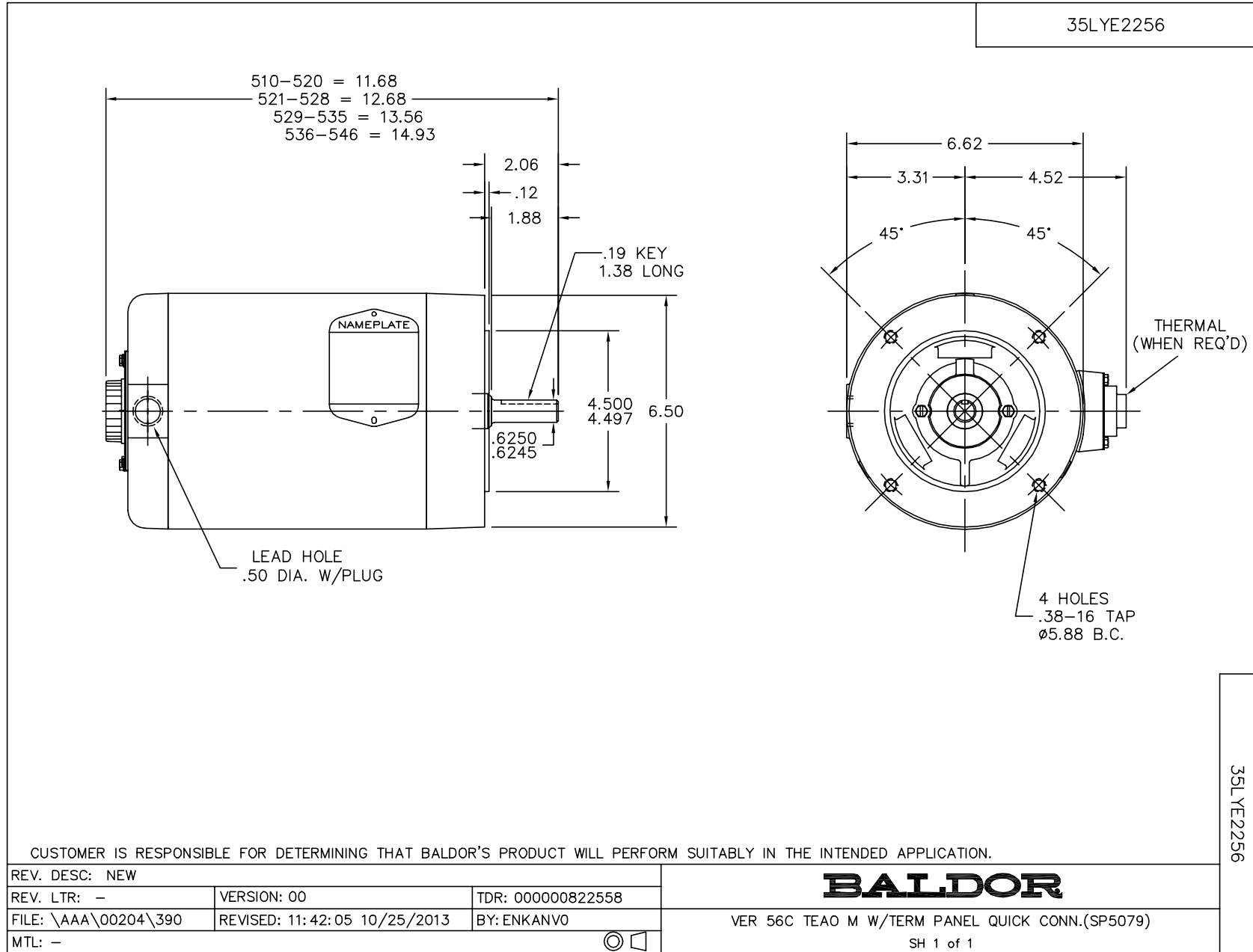
Nameplate Data				460 V, 60 Hz: High Voltage Connection	
Rated Output (HP)	1			Full Load Torque	6.1 LB-FT
Volts	208-230/460			Start Configuration	direct on line
Full Load Amps	6.5-6.4/3.2			Breakdown Torque	19.8 LB-FT
R.P.M.	850			Pull-up Torque	14 LB-FT
Hz	60	Phase	3	Locked-rotor Torque	14.8 LB-FT
NEMA Design Code	B	KVA Code	G	Starting Current	10.7 A
Service Factor (S.F.)	1			No-load Current	1.91 A
NEMA Nom. Eff.	74	Power Factor	54	Line-line Res. @ 25°C	16.7 Ω
Rating - Duty	40C AMB-CONT			Temp. Rise @ Rated Load	
				Locked-rotor Power Factor	58
				Rotor inertia	0.273 LB-FT <sup>2</sup>

Load Characteristics 460 V, 60 Hz, 1 HP

% of Rated Load	25	50	75	100	125	150
Power Factor	24	37	46	56	62	68
Efficiency	53.7	67	71.9	73.4	73.4	73.3
Speed	891	882	875	865	855	844
Line amperes	1.95	2.05	2.16	2.35	2.6	2.83

Performance Graph at 460V, 60Hz, 1.0HP Typical performance - Not guaranteed values

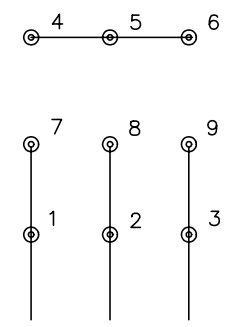




CD0005

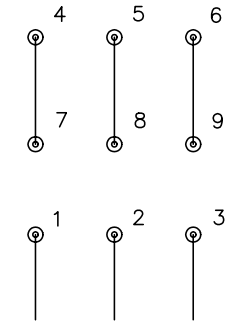


LOW VOLTAGE (2Y)



LINE

HIGH VOLTAGE (1Y)



LINE

NOTES:

1. INTERCHANGE ANY TWO LINE LEADS TO REVERSE ROTATION.
2. OPTIONAL THERMOSTATS ARE PROVIDED WHEN SPECIFIED.
3. ACTUAL NUMBER OF INTERNAL PARALLEL CIRCUITS MAY BE A MULTIPLE OF THOSE SHOWN ABOVE.
4. LEAD COLORS ARE OPTIONAL. LEADS MUST ALWAYS BE NUMBERED AS SHOWN.

REV. DESC: REVISE TO SHOW OPTIONAL COLORS			
REV. LTR: E	BY: JLP	REVISED: 01/19/99 10:15	TDR: 0171435
9000D		FILE: AAA00005140	MDL: -
		MTL: -	

**BALDOR ELECTRIC Co.**

3PH, DV, 9 LEADS

CD0005