

BALDOR® • **RELIANCE**

Product Information Packet

VAOM3560

.5 AIR OVERHP,850RPM,3PH,60HZ,56C,3528M

Part Detail							
Revision:	B	Status:	PRD/A	Change #:		Proprietary:	No
Type:	AC	Prod. Type:	3528M	Elec. Spec:	35WG5351	CD Diagram:	CD0005
Enclosure:	TEAO	Mfg Plant:		Mech. Spec:	35E2256	Layout:	35LYE2256
Frame:	56C	Mounting:	F1	Poles:	08	Created Date:	04-10-2014
Base:	N	Rotation:	R	Insulation:	F	Eff. Date:	10-21-2016
Leads:	9#18					Replaced By:	
Literature:		Elec. Diagram:					

Nameplate NP1256L										
CAT.NO.	VAOM3560									
SPEC.	35E2256-5351G1									
HP	.5 AIR OVER									
VOLTS	208-230/460									
AMP	3.4-3.2/1.6									
RPM	850									
FRAME	56C				HZ	60			PH	3
SER.F.	1.00		CODE	M	DES	B		CLASS	F	
NEMA-NOM-EFF	64		PF	46						
RATING	40C AMB-CONT									
CC								USABLE AT 208V	3.4	
DE	6205				ODE	6203				
ENCL	TEAO		SN							

Parts List		
Part Number	Description	Quantity
SA279321	SA 35E2256-5351G1	1.000 EA
RA265841	RA 35E2256-5351G1	1.000 EA
53XT0832G07	8-32X7/16 PN STD SR TY23G X	1.000 EA
51XT1032A07	10-32X7/16 TY23 HXHD SLTD	2.000 EA
35EP3102B59	FREP ENCL, .50 NPT LEAD HOLE, MACH'D SW	1.000 EA
HW4003A01	T&B PLG-1-RD, 1/2 NPT PLUG ALUM	1.000 EA
HW5100A03SP	WAVY WASHER (W1543-017)	1.000 EA
35EP3300A33	SPL FACE MTD EP -ENCL-205 BRG	1.000 EA
51XN1032A20	10-32 X 1 1/4 HX WS SL SR	2.000 EA
35CB4500SP	TERMINAL BOX LID STAMPED	1.000 EA
35GS1002	GASKET,1/16 THICK LEXIDE	1.000 EA
51XW0832A07	8-32 X .44, TAPTITE II, HEX WSHR SLTD SE	2.000 EA
HW2501D13	KEY, 3/16 SQ X 1.375	1.000 EA
HA7000A04	KEY RETAINER 0.625 DIA SHAFTS	1.000 EA
85XU0407S04	4X1/4 U DRIVE PIN STAINLESS	2.000 EA
MJ1000A02	GREASE, POLYREX EM EXXON (USe 4824-15A)	0.050 LB
WD1000A16	2-520128-2 AMP FLAG TERMINAL(4M/RL)	9.000 EA
MG1000G27	MED CHARCOAL METALLIC GREY 400-0096	0.017 GA
HA3100A15	THRUBOLT 10-32 X 8.375	4.000 EA
SP5079A01	MODEL 35 3PH TERM PANEL CONN 9LD DUAL VO	1.000 EA
LC0005E01	CONN.DIA./WARNING LABEL (LC0005/LB1119N)	1.000 EA
MN416A01	TAG-INSTAL-MAINT no wire (1200/bx) 11/14	1.000 EA
NP1256L	ALUM UL CSA CC	1.000 EA
36PA1000	PKG GRP, PRINT PK1016A06	1.000 EA

Parts List (continued)		
Part Number	Description	Quantity
PK3082	STYROFOAM CRADLE	1.000 EA

AC Induction Motor Performance Data

Record # 50320 - Typical performance - not guaranteed values

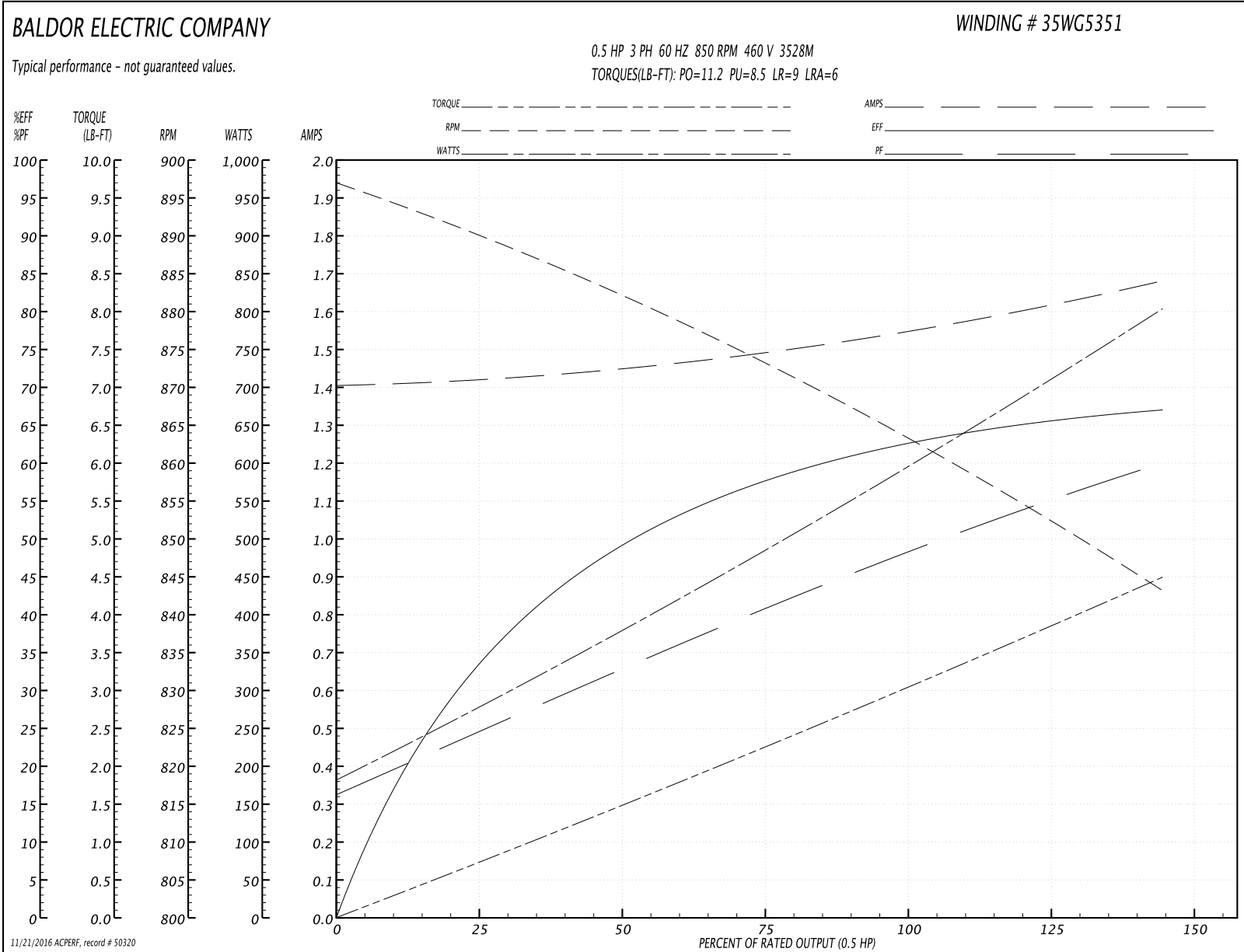
Winding: 35WG5351-R011	Type: 3528M	Enclosure: TEAO
-------------------------------	--------------------	------------------------

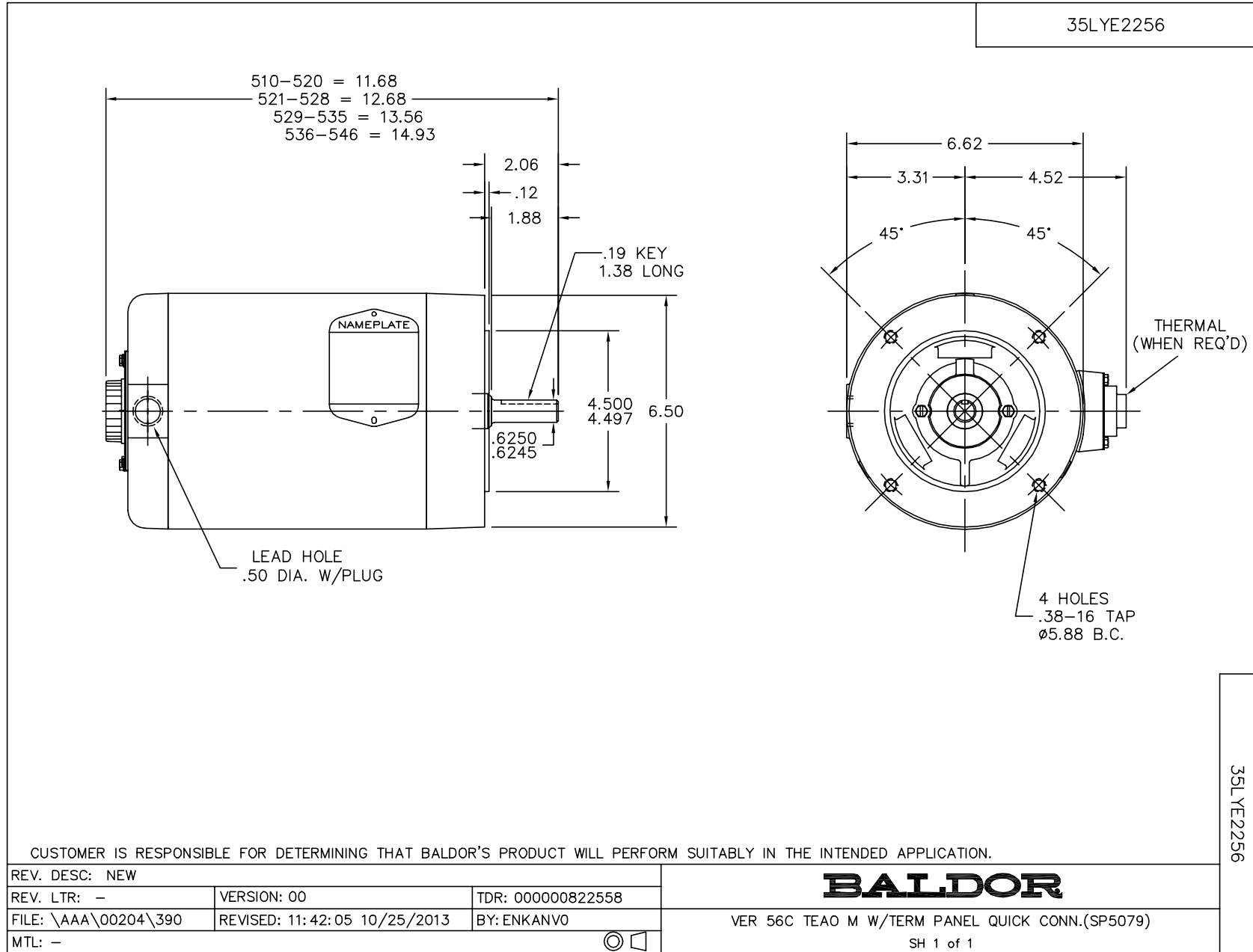
Nameplate Data				460 V, 60 Hz: High Voltage Connection	
Rated Output (HP)	.5 AIR OVER			Full Load Torque	3 LB-FT
Volts	208-230/460			Start Configuration	direct on line
Full Load Amps	3.4-3.2/1.6			Breakdown Torque	11.2 LB-FT
R.P.M.	850			Pull-up Torque	8.5 LB-FT
Hz	60	Phase	3	Locked-rotor Torque	9 LB-FT
NEMA Design Code	B	KVA Code	M	Starting Current	6 A
Service Factor (S.F.)	1			No-load Current	1.4 A
NEMA Nom. Eff.	64	Power Factor	46	Line-line Res. @ 25°C	32.3 Ω
Rating - Duty	40C AMB-CONT			Temp. Rise @ Rated Load	70°C

Load Characteristics 460 V, 60 Hz, 0.5 HP

% of Rated Load	25	50	75	100	125	150
Power Factor	25	33	41	49	55	62
Efficiency	33.3	49.1	57.8	62.7	65.5	66.8
Speed	890	882	873	864	854	843
Line amperes	1.4	1.5	1.5	1.5	1.6	1.7

Performance Graph at 460V, 60Hz, 0.5HP Typical performance - Not guaranteed values





CD0005

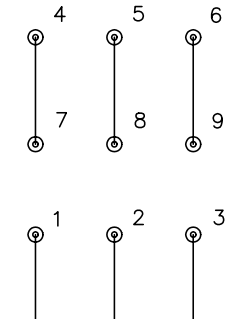


LOW VOLTAGE (2Y)



LINE

HIGH VOLTAGE (1Y)



LINE

NOTES:

1. INTERCHANGE ANY TWO LINE LEADS TO REVERSE ROTATION.
2. OPTIONAL THERMOSTATS ARE PROVIDED WHEN SPECIFIED.
3. ACTUAL NUMBER OF INTERNAL PARALLEL CIRCUITS MAY BE A MULTIPLE OF THOSE SHOWN ABOVE.
4. LEAD COLORS ARE OPTIONAL. LEADS MUST ALWAYS BE NUMBERED AS SHOWN.

REV. DESC: REVISE TO SHOW OPTIONAL COLORS			
REV. LTR: E	BY: JLP	REVISED: 01/19/99 10:15	TDR: 0171435
90000		FILE: AAA00005140	MDL: -
		MTL: -	

BALDOR ELECTRIC Co.

3PH, DV, 9 LEADS

CD0005