

# **BALDOR**® • **RELIANCE**

## **Product Information Packet**

### **VL1408T**

**3HP,1725RPM,1PH,60HZ,184TC,3634LC,OPEN**

| Part Detail |                     |                |        |             |          |               |            |
|-------------|---------------------|----------------|--------|-------------|----------|---------------|------------|
| Revision:   | AJ                  | Status:        | PRD/A  | Change #:   |          | Proprietary:  | No         |
| Type:       | AC                  | Prod. Type:    | 3634LC | Elec. Spec: | 36WG2759 | CD Diagram:   | CD0016A01  |
| Enclosure:  | ODTF                | Mfg Plant:     |        | Mech. Spec: | 36E001   | Layout:       | 36LYE001   |
| Frame:      | 184TC               | Mounting:      | F1     | Poles:      | 04       | Created Date: |            |
| Base:       | N                   | Rotation:      | R      | Insulation: | B        | Eff. Date:    | 09-10-2015 |
| Leads:      | 4#14 A PH,3#16 B PH |                |        |             |          | Replaced By:  |            |
| Literature: |                     | Elec. Diagram: |        |             |          |               |            |

| Nameplate NP1256L |              |  |      |     |      |    |  |                |      |   |
|-------------------|--------------|--|------|-----|------|----|--|----------------|------|---|
| CAT.NO.           | VL1408T      |  |      |     |      |    |  |                |      |   |
| SPEC.             | 36E01-2759   |  |      |     |      |    |  |                |      |   |
| HP                | 3            |  |      |     |      |    |  |                |      |   |
| VOLTS             | 115/230      |  |      |     |      |    |  |                |      |   |
| AMP               | 32/16        |  |      |     |      |    |  |                |      |   |
| RPM               | 1725         |  |      |     |      |    |  |                |      |   |
| FRAME             | 184TC        |  |      |     | HZ   | 60 |  |                | PH   | 1 |
| SER.F.            | 1.15         |  | CODE | H   | DES  | L  |  | CLASS          | B    |   |
| NEMA-NOM-EFF      | 78           |  | PF   | 78  |      |    |  |                |      |   |
| RATING            | 40C AMB-CONT |  |      |     |      |    |  |                |      |   |
| CC                |              |  |      |     |      |    |  | USABLE AT 208V | 16.8 |   |
| DE                | 6206         |  |      | ODE | 6205 |    |  |                |      |   |
| ENCL              | ODTF         |  | SN   |     |      |    |  |                |      |   |

| Parts List    |                                          |          |
|---------------|------------------------------------------|----------|
| Part Number   | Description                              | Quantity |
| SA034415      | SA 36E01-2759                            | 1.000 EA |
| RA030443      | RA 36E01-2759                            | 1.000 EA |
| 36CB3004      | 36 CB CASTING W/1.09 DIA LEAD HOLE @ 6:0 | 1.000 EA |
| 51XB1016A08   | 10-16X 1/2HXWSSLD SERTYB                 | 2.000 EA |
| 11XW1032G06   | 10-32 X .38, TAPTITE II, HEX WSHR SLTD U | 1.000 EA |
| HW3001B01     | BRASS CUP WASHER, FOR #8 SCREW           | 1.000 EA |
| 36FE3200A03   | FREP ASSEMBLY FOR ROUTING PURPOSES       | 1.000 EA |
| HW4500A01     | 1641B(ALEMITE)400 UNIV, GREASE FITT      | 1.000 EA |
| SP1008A01     | BAFFLE, MODEL 36 & 37                    | 1.000 EA |
| 13XF0832A08   | 8-32 X.50 PAN HD,SLTD, TYPE F SCREW, ZIN | 2.000 EA |
| 10XN2520A12   | O1/4-20X 3/4 HEX HEAD CAP                | 2.000 EA |
| HW5100A05     | WVY WSHR F/205 & 304 BRGS                | 1.000 EA |
| 36PE3403A03   | PUEP ASSEMBLY FOR ROUTING PURPOSES       | 1.000 EA |
| HW4500A01     | 1641B(ALEMITE)400 UNIV, GREASE FITT      | 1.000 EA |
| 36AD2000      | AIR BAFFLE                               | 1.000 EA |
| 60XW0632A06   | 6-32 X 3/8 TORX HEAD SCREW TAPTITE II    | 4.000 EA |
| 10XN2520A28   | 1/4-20X 1 3/4 HEX HD                     | 4.000 EA |
| HW1001A25     | LOCKWASHER 1/4, ZINC PLT .493 OD, .255 I | 4.000 EA |
| 36FN3000A01SP | EXFN, PLASTIC, 7.00 OD, .912 ID          | 1.000 EA |
| 51XB1214A16   | 12-14X1.00 HXWSSLD SERTYB                | 1.000 EA |
| 36FH4012A01   | DRIP COVER NOTCH BOTTOM, W/ PRIMER       | 1.000 EA |
| 51XW1032A06   | 10-32 X .38, TAPTITE II, HEX WSHR SLTD S | 3.000 EA |
| 36CB4516      | 36 LIPPED CB LID                         | 1.000 EA |
| 51XW0832A07   | 8-32 X .44, TAPTITE II, HEX WSHR SLTD SE | 4.000 EA |

| Parts List (continued) |                                          |          |
|------------------------|------------------------------------------|----------|
| Part Number            | Description                              | Quantity |
| HW2501E16              | 3KEY, 1/4 SQ X 1.750                     | 1.000 EA |
| HA7000A02              | KEY RETAINER RING, 1 1/8 DIA, 1 3/8 DIA  | 1.000 EA |
| 85XU0407S04            | 4X1/4 U DRIVE PIN STAINLESS              | 2.000 EA |
| MJ1000A02              | GREASE, POLYREX EM EXXON (USe 4824-15A)  | 0.050 LB |
| MG1000G27              | MED CHARCOAL METALLIC GREY 400-0096      | 0.022 GA |
| HA3101A25              | THRUBOLT 1/4-20 X 11.000 OHIO ROD        | 4.000 EA |
| 36CB5010A01            | CAPACITOR BOX KIT, 36CB3800, OC3020F12   | 1.000 EA |
| SP5172A38              | 37 TYPE LC TORQ STAT SWITCH LEAD ASSEMBL | 1.000 EA |
| LB1119N                | WARNING LABEL                            | 1.000 EA |
| LC0016                 | CONNECTION LABEL                         | 1.000 EA |
| NP1256L                | ALUM UL CSA CC                           | 1.000 EA |
| 36PA1001               | PKG GRP, PRINT PK1017A06                 | 1.000 EA |
| PK3082                 | STYROFOAM CRADLE                         | 1.000 EA |
| MN416A01               | TAG-INSTAL-MAINT no wire (1200/bx) 11/14 | 1.000 EA |

**AC Induction Motor Performance Data**

Record # 10535 - Typical performance - not guaranteed values

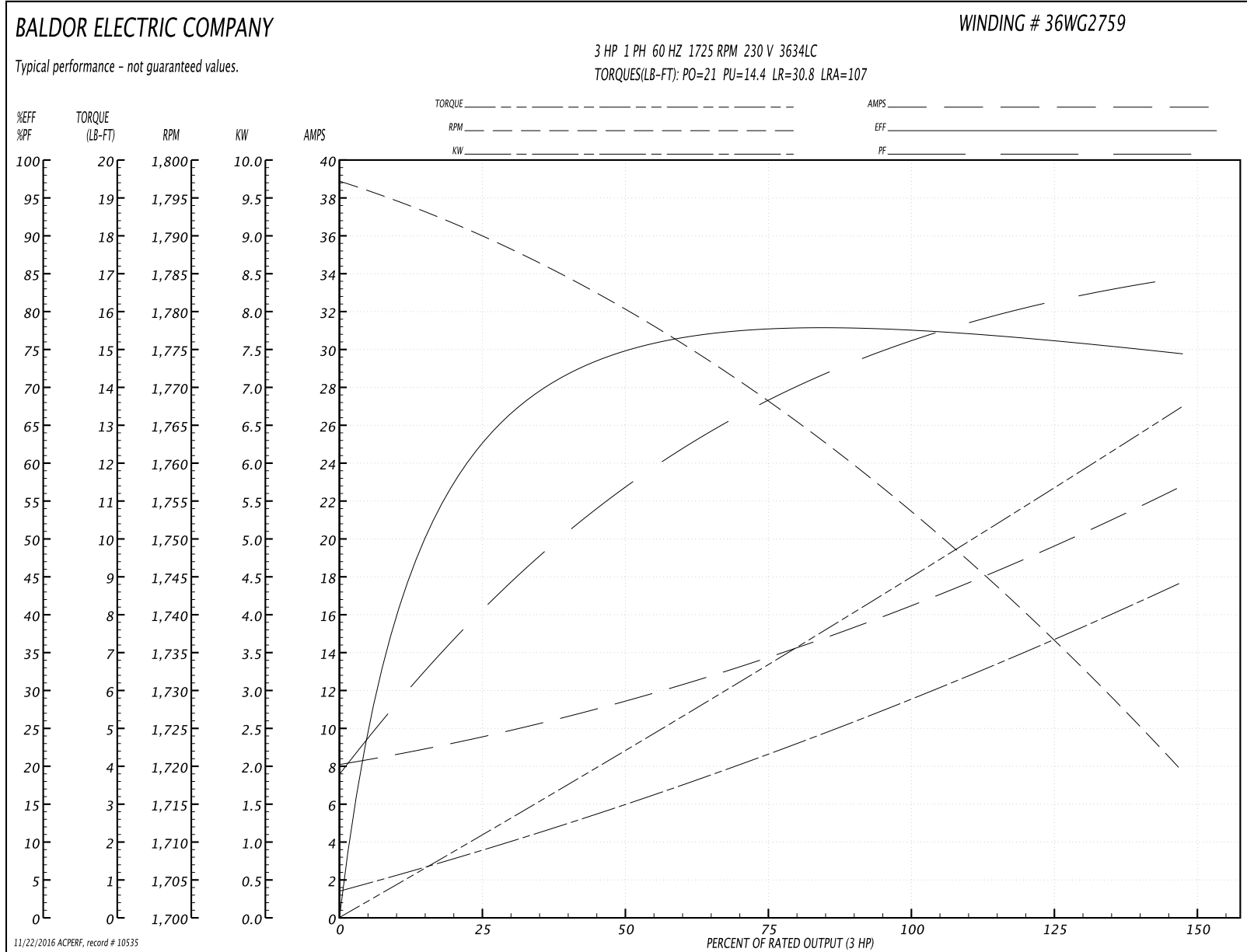
|                               |                     |                        |
|-------------------------------|---------------------|------------------------|
| <b>Winding:</b> 36WG2759-R001 | <b>Type:</b> 3634LC | <b>Enclosure:</b> OPEN |
|-------------------------------|---------------------|------------------------|

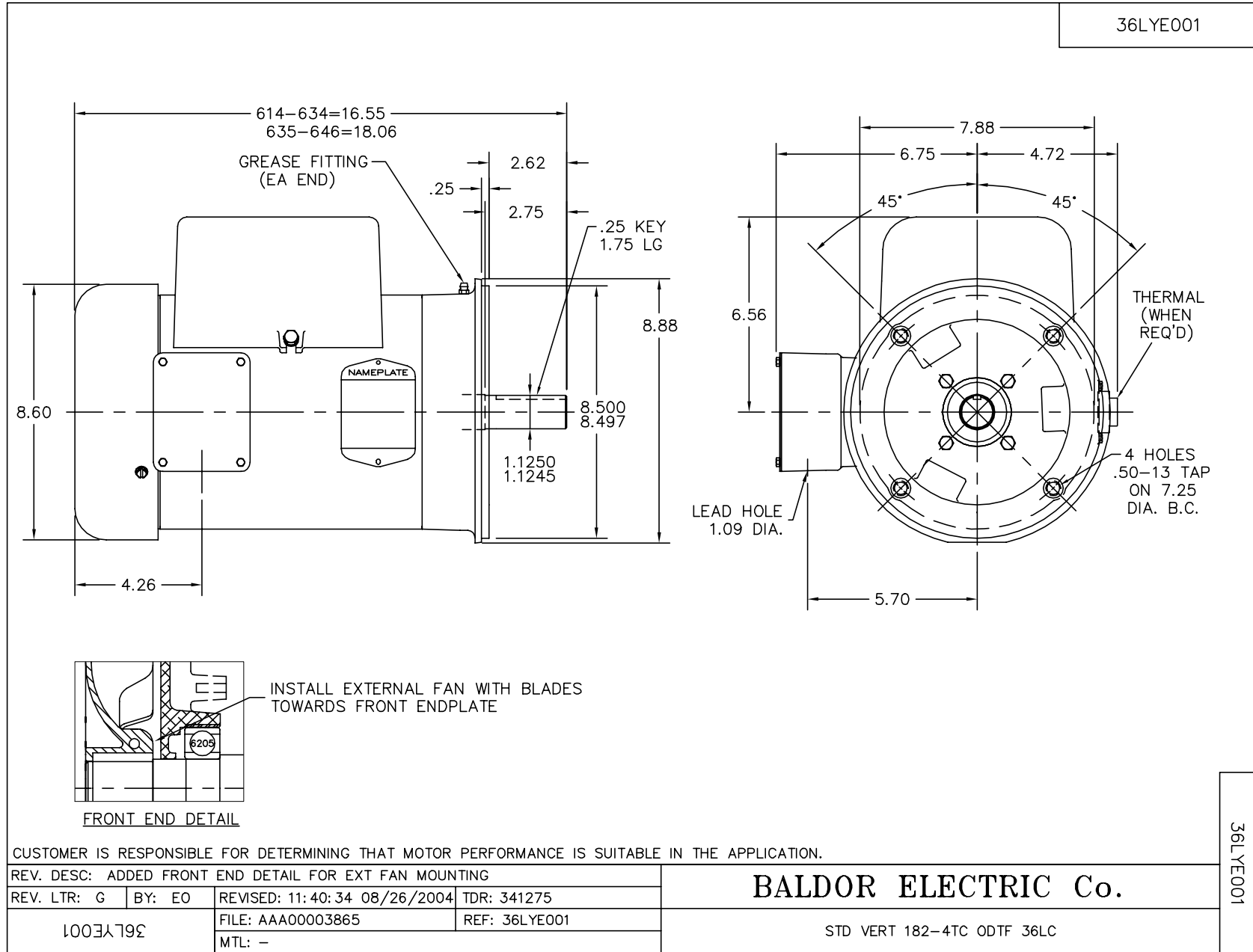
| Nameplate Data        |              |              |    | 230 V, 60 Hz:<br>High Voltage Connection |                              |
|-----------------------|--------------|--------------|----|------------------------------------------|------------------------------|
| Rated Output (HP)     | 3            |              |    | Full Load Torque                         | 9 LB-FT                      |
| Volts                 | 115/230      |              |    | Start Configuration                      | direct on line               |
| Full Load Amps        | 32/16        |              |    | Breakdown Torque                         | 21 LB-FT                     |
| R.P.M.                | 1725         |              |    | Pull-up Torque                           | 14.4 LB-FT                   |
| Hz                    | 60           | Phase        | 1  | Locked-rotor Torque                      | 30.8 LB-FT                   |
| NEMA Design Code      | L            | KVA Code     | H  | Starting Current                         | 107 A                        |
| Service Factor (S.F.) | 1.15         |              |    | No-load Current                          | 8.5 A                        |
| NEMA Nom. Eff.        | 78           | Power Factor | 78 | Line-line Res. @ 25°C                    | 4.156 Ω A Ph<br>0.586 Ω B Ph |
| Rating - Duty         | 40C AMB-CONT |              |    | Temp. Rise @ Rated Load                  | 57°C                         |
| S.F. Amps             |              |              |    | Temp. Rise @ S.F. Load                   | 72°C                         |

Load Characteristics 230 V, 60 Hz, 3 HP

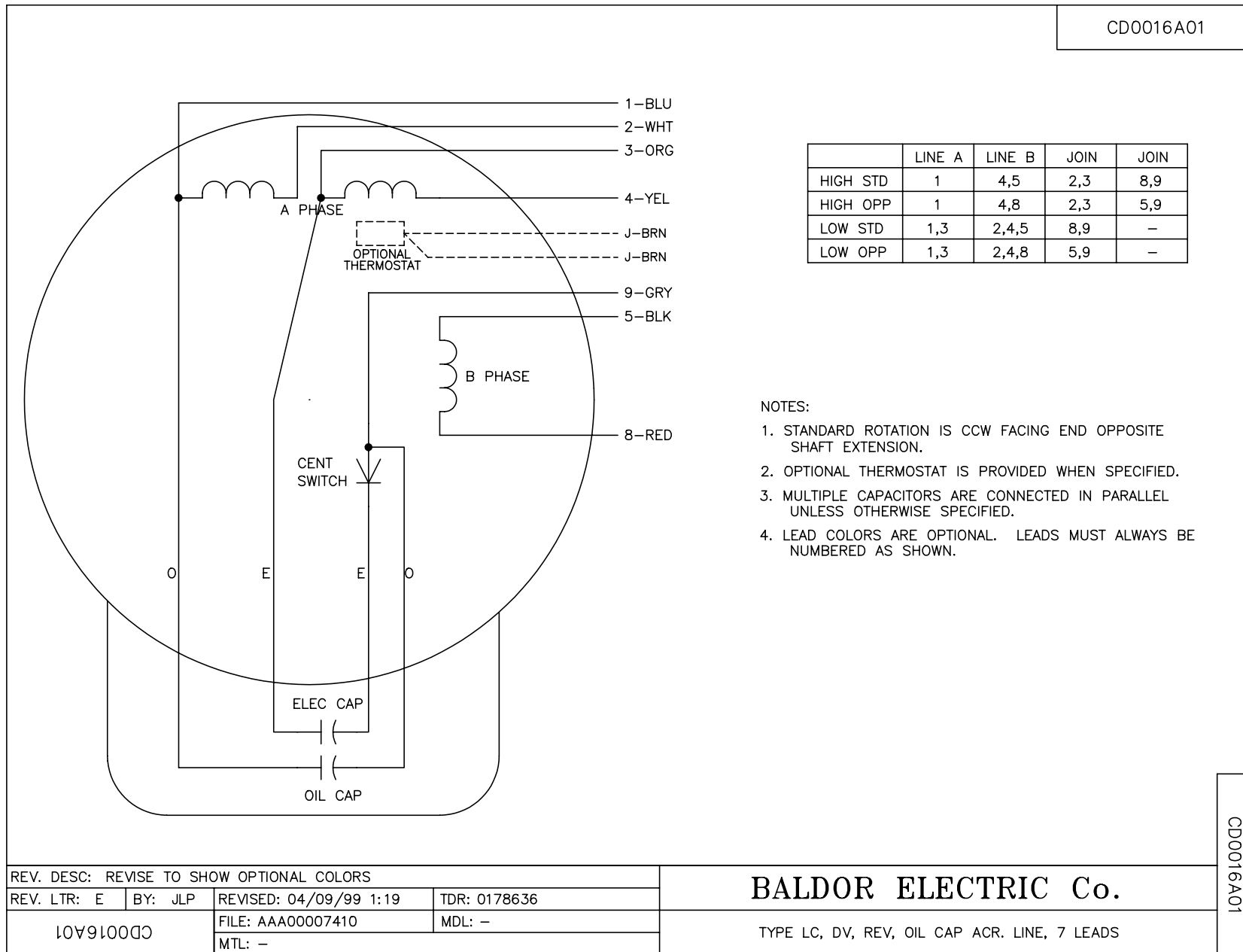
| % of Rated Load | 25   | 50   | 75   | 100  | 125  | 150  | S.F. |
|-----------------|------|------|------|------|------|------|------|
| Power Factor    | 45   | 64   | 73   | 79   | 85   | 83   | 83   |
| Efficiency      | 62.6 | 74.9 | 78.6 | 78   | 75   | 74.9 | 76.1 |
| Speed           | 1788 | 1780 | 1769 | 1756 | 1733 | 1721 | 1742 |
| Line amperes    | 9.1  | 10.4 | 15.8 | 16   | 19   | 23   | 17.8 |

Performance Graph at 230V, 60Hz, 3.0HP Typical performance - Not guaranteed values





CDO016A01



|          | LINE A | LINE B | JOIN | JOIN |
|----------|--------|--------|------|------|
| HIGH STD | 1      | 4,5    | 2,3  | 8,9  |
| HIGH OPP | 1      | 4,8    | 2,3  | 5,9  |
| LOW STD  | 1,3    | 2,4,5  | 8,9  | -    |
| LOW OPP  | 1,3    | 2,4,8  | 5,9  | -    |

NOTES:

1. STANDARD ROTATION IS CCW FACING END OPPOSITE SHAFT EXTENSION.
2. OPTIONAL THERMOSTAT IS PROVIDED WHEN SPECIFIED.
3. MULTIPLE CAPACITORS ARE CONNECTED IN PARALLEL UNLESS OTHERWISE SPECIFIED.
4. LEAD COLORS ARE OPTIONAL. LEADS MUST ALWAYS BE NUMBERED AS SHOWN.

|                                           |         |                        |              |
|-------------------------------------------|---------|------------------------|--------------|
| REV. DESC: REVISE TO SHOW OPTIONAL COLORS |         |                        |              |
| REV. LTR: E                               | BY: JLP | REVISED: 04/09/99 1:19 | TDR: 0178636 |
| 10V91000                                  |         | FILE: AAA00007410      | MDL: -       |
| CDO016A01                                 |         | MTL: -                 |              |

**BALDOR ELECTRIC Co.**

TYPE LC, DV, REV, OIL CAP ACR. LINE, 7 LEADS

CDO016A01