

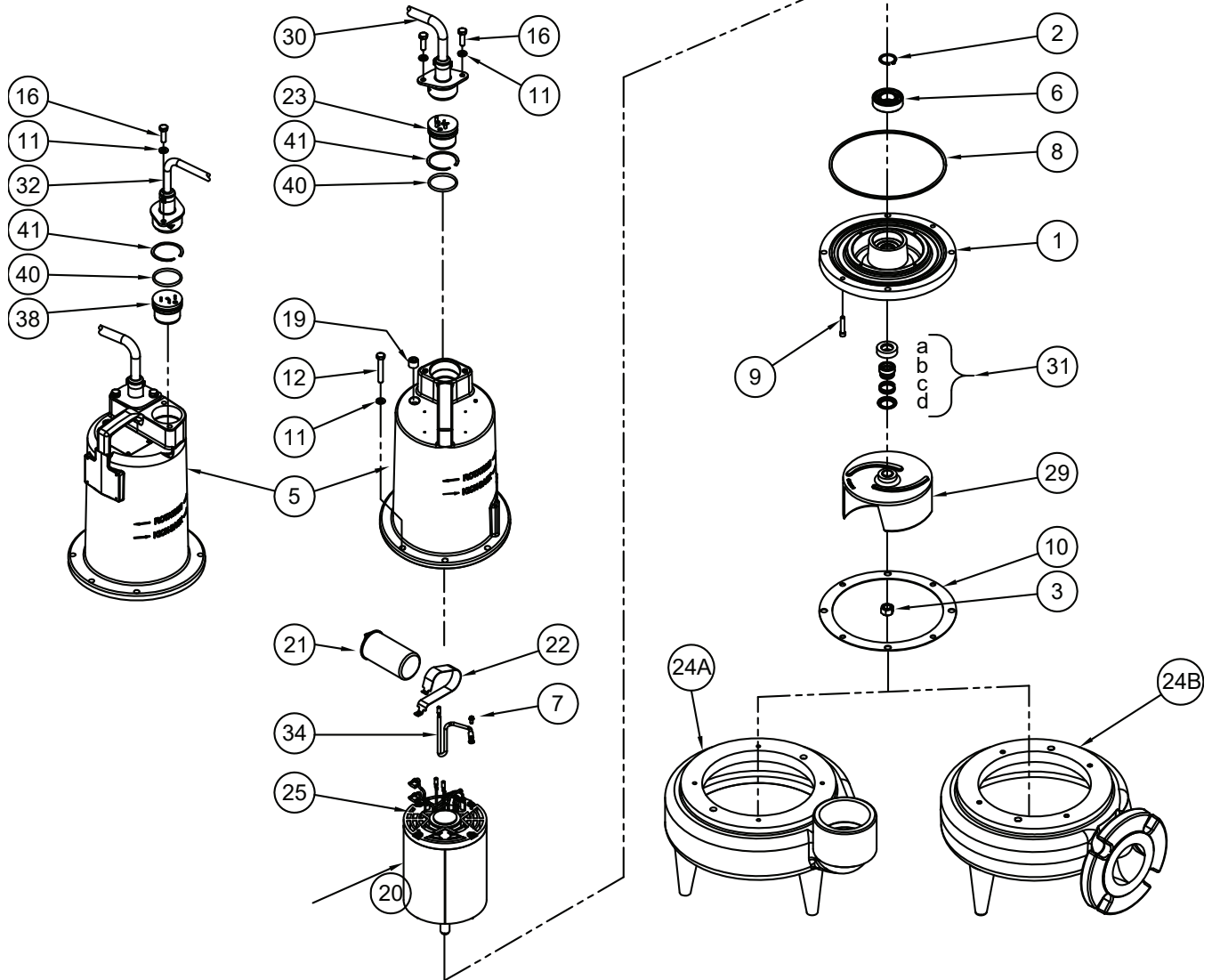
BARNES • PROSSER • CROWN SERVICE PARTS

MODEL	PART NO.	MODEL	PART NO.
3SE1524L	132725	3SEH2024L	132750H
3SE1594L	132730	3SEH2094L	132752H
3SE1544L	132735	3SEH2044L	132754H
3SE1554L	132740		
3SE2024L	132750		
3SE2094L	132752		
3SE2044L	132754		
3SE2054L	132756		



Questions? Call **1-800-810-1053**

Manual: 132724



Continued →

Series: 3SE

Submersible Sewage Ejectors
1.5 & 2.0HP, 1750RPM

BARNES®

www.cranepumps.com

BARNES • PROSSER • CROWN SERVICE PARTS

PARTS KITS

SEAL REPAIR KIT: 1.5 & 2.0HP.....	P/N 130181	(+) 8, 10, 31, 40
SERVICE: 1.5 & 2.0HP	P/N 130208	(◇) 2, 3, 6, 8, 10, 14, 15, 18, 25, 31, 34, 35, 40, 41
TOOLS: Seal Pusher.....	P/N- TL-21360	
Bullet.....	P/N- TL-21375	
PRESSURE GAUGE KIT	P/N 085343	

PARTS LIST - Standard

ITEM	QTY	PART NO.	DESCRIPTION	
1	1	084343	Seal Plate	
2	1	061143	Retaining Ring	◇
3	1	038132	Nut 5/8-18 Stainless	◇
5	1	105196	Motor Housing	(Std)
		105196HA		(Optional) temp. sensor
6	1	039734	Bearing	◇
7	1	016660	Screw	#8-32, 3/8 Ig Stainless
8	1	027269	Square Ring	+◇
9	2	084948	Soc. Hd Screw	1/4-20 x 1-1/4" Ig Stainless
10	1	027344	Gasket	+◇
11	8	026322	Lockwasher	(Std), 5/16, Stainless
	10	026322		(Optional) temp. sensor
12	4	1-140-1	Cap Screw	
13	105 oz.	029034	Oil	
14	4	See BOM	Connector	230V 3 Phase
	3	019212		460V ONLY
15	3	111951	Terminal	460V ONLY
16	4	1-156-1	Hex. Hd. Cap Screw	(Std), 5/16-18 x 1.00" Lg., Stainless
	6	1-156-1	Hex. Hd. Cap Screw	(Optional) temp. sensor
17	1	103503	Handle	
18	3	105149A	Wire Assemblies	(3 Phase) 230V
19	1	014270	Pipe Plug	.375" NPT
20	1	084382MA	Motor	3SE1524L, 3SE2024L
		084383MA		3SE1594L, 3SE1544L
		084383MA		3SE2094L, 3SE2044L
		092856		3SE1554L, 3SE2054L
21	1	036391	Capacitor	(1 phase) 370V, 45MFD
22	1	039858	Capacitor Bracket	(1 phase)
23	1	See Table 2	Terminal Block	
24A	1	084399	Volute, Vertical	
24B	1	084399H	Volute, Horizontal	
25	1	625-02117	Sleeve, Fiberglass	230V 1 Phase, 460V 3 Phase, 575V 3 Phase
	2	625-02117		230V 3 Phase
29	1	See Table 3	Impeller, Cast Iron	
30	1	See Table 2	Power Cable Set	
31	1	067562	Shaft Seal	+◇
		067562SB		Carbon/Ceramic/Buna-N (STD)
		067562SD		Tungsten/Tungsten/Buna-N (Optional)
		067562SD		Silicon/Silicon/Buna-N (Optional)
32	1	See Table 2	Control Cable	(Optional) temp. sensor
34	1	105111	Ground Wire	460V 3 Phase, 575V 3 Phase
	1	105111A		230V 1 Phase
	1	105111B		230V 3 Phase

Continued →

SECTION 1B
PAGE 86
DATE 3/20

CRANE®

PUMPS & SYSTEMS

A Crane Co. Company

USA: (937) 778-8947 • Canada: (905) 457-6223 • International: (937) 615-3598

BARNES • PROSSER • CROWN SERVICE PARTS

ITEM	QTY.	PART NO.		DESCRIPTION	
35	1	105111	◇	Ground Wire	(Optional) temp. sensors
38	1	See Table 2		Terminal Block	(Optional) temp. sensors
40	1	2-31051-224	+◇	O-ring	(Std)
	1	2-31051-224			(Optional) temp. sensor
41	1	105197	◇	Snap Ring	(Std)
	1	105197			(Optional) temp. sensor

TABLE 2 - POWER & SENSOR CORD SETS

MODEL NO	30 FT. POWER	50 FT. POWER	100 FT. POWER	TERMINAL BLOCK POWER
3SE1524L	109498XC	109498XF	109498XL	103760
3SE1594L	109492XC	109492XF	109492XL	103586
3SE1544L	103742XC	103742XF	103742XL	103583
3SE1554L	103742XC	103742XF	103742XL	103583
3SE2024L	103769XC	103769XF	103769XL	103760
3SE2094L	109492XC	109492XF	109492XL	103586
3SE2044L	103742XC	103742XF	103742XL	103583
3SE2054L	103742XC	103742XF	103742XL	103583
3SEH2024L	103769XC	103769XF	103769XL	103760
3SEH2094L	109492XC	109492XF	109492XL	103586
3SEH2044L	103742XC	103742XF	103742XL	103583

MODEL NO	30 FT. TEMP. SENSOR	50 FT. TEMP. SENSOR	100 FT. TEMP. SENSOR	TERMINAL BLOCK TEMP. SENSOR
3SE1524L	None	None	None	None
3SE1594L	103741XC	103741XF	103741XL	103584
3SE1544L	113288XC	113288XF	113288XL	113272
3SE1554L	113288XC	113288XF	113288XL	113272
3SE2024L	None	None	None	None
3SE2094L	103741XC	103741XF	103741XL	103584
3SE2044L	113288XC	113288XF	113288XL	113272
3SE2054L	113288XC	113288XF	113288XL	113272
3SEH2024L	None	None	None	None
3SEH2094L	103741XC	103741XF	103741XL	103584
3SEH2044L	113288XC	113288XF	113288XL	113272

Continued →

Series: 3SE

Submersible Sewage Ejectors

1.5 & 2.0HP, 1750RPM

BARNES®

www.cranepumps.com

BARNES • PROSSER • CROWN SERVICE PARTS

TABLE 3 - IMPELLER ITEM #29

DIAMETER	1.5 & 2HP
7.00"	084439
6.88"	084439TA
6.75"	084439TB
6.62"	084439TC
6.50" (STD 2.0 HP)	084439TD
6.38"	084439TE
6.25"	084439TF
6.12"	084439TG
6.00" (STD 1.5 HP)	084439TH
5.88"	084439TJ
5.75"	084439TK
5.62"	084439TL
5.50"	084439TM
5.38"	084439TN
5.25"	084439TP
5.12"	084439TQ
5.00"	084439TR
4.88"	084439TS
4.75"	084439TT
4.62"	084439TU
4.50"	084439TV

Order Online: www.PumpCatalog.com

End

SECTION 1B
PAGE 88
DATE 9/11

CRANE[®]

A Crane Co. Company

PUMPS & SYSTEMS

USA: (937) 778-8947 • Canada: (905) 457-6223 • International: (937) 615-3598