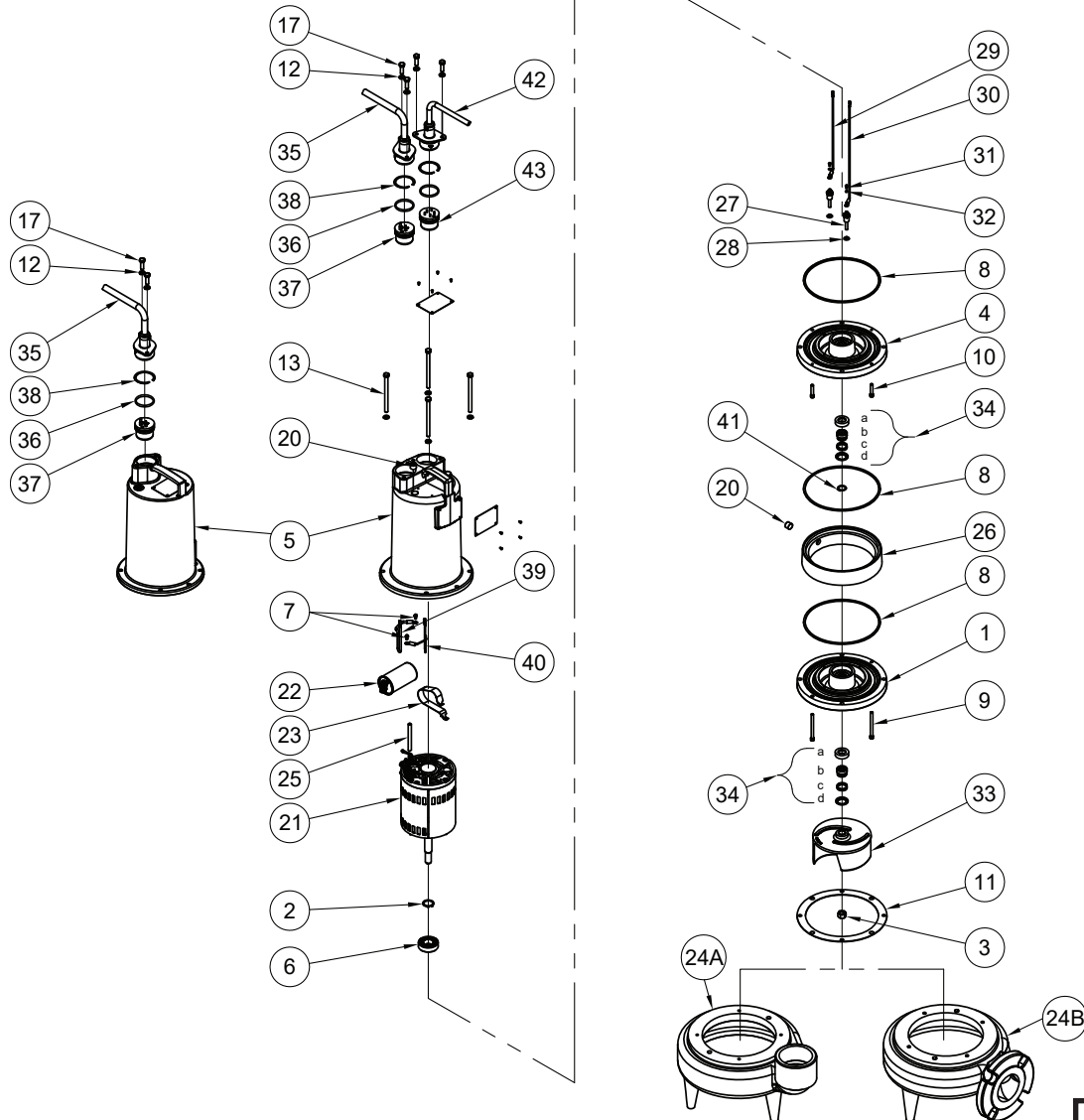


BARNES • PROSSER • CROWN SERVICE PARTS

MODEL	PART NO.	MODEL	PART NO.
3SE1524DS	132745	3SEH2024DS	132765H
3SE1594DS	132758	3SEH2094DS	132768H
3SE1544DS	132760	3SEH2044DS	132770H
3SE1554DS	132761		
3SE2024DS	132765		
3SE2094DS	132768		
3SE2044DS	132770		
3SE2054DS	132772		

Manual: 132741



Continued →

Series: 3SE-DS

Double Seal - Submersible Sewage Ejectors
1.5 & 2.0HP, 1750RPM



BARNES • PROSSER • CROWN SERVICE PARTS

PARTS KITS

- SEAL REPAIR KIT: 1.5 & 2.0HP..... P/N 130177 (+) 8, 34, 36
 SERVICE: 1.5 & 2.0HP P/N 130173 (◇) 2, 3, 6, 8, 11, 15, 16, 19, 25, 34, 36, 38, 39
 TOOLS: Seal Pusher..... P/N- TL-21360
 Bullet..... P/N- TL-21375
 PRESSURE GAUGE KIT P/N 085343

PARTS LIST - Standard

ITEM	QTY	PART NO.	DESCRIPTION	
1	1	084343	Plate,Seal,CI	Lower
2	1	061143	◇ Ring,Retaining,Ext	
3	1	038132	◇ Nut,Hex,Jam	5/8-18 Stainless
4	1	084429	Plate,Seal,CI	Upper
5	1	105196HA	Housing,Motor	STD
		105196	Housing,Motor	W/O Sensor Cable
6	1	039734	◇ Bearing,Ball	
7	2	016660	Screw,Self-Tap	#8-32 .375" LG, Stainless
8	3	027269	+◇ Ring,Square	
9	2	067519	Screw,SKHD	1/4-20,3.00" Stainless
10	2	084948	Screw,SKHD	1/4-20,1.25" Stainless
11	1	027344	◇ Gasket	
12	6	026322	Washer,Lock	5/16 Stainless
13	4	064114	Screw,HXHD	5/16-18,4.50" LG Stainless
14	113 Oz.	029034	Oil (includes 24 Oz in Seal Chamber)	
15	4	See BOM	◇ Connector	3SE1594, 3SE2094
	3	019212	Connector	3SE1544, 3SE2044
16	3	111951	◇ Terminal	3SE1544, 3SE2044
17	2	1-156-1	Screw,HXHD	5/16-18,1.00" Stainless
18	1	103503	Handle,Lifting	
19	3	105149A	◇ Wire Assemblies	3SE1594, 3SE2094
20	2	014270	Plug,Pipe	.375 NPT
21	1	084382MB	Motor Assy	3SE1524, 3SE2024
	1	084383MB	Motor Assy	3SE1594, 3SE2094
	1	084383MB	Motor Assy	3SE1544, 3SE2044
	1	092859	Motor Assy	3SE1554, 3SE2054
22	1	See Bom	Capacitor,Run,370V,45mfd	3SE1524, 3SE2024
23	1	See Bom	Bracket,Stl,Capacitor	3SE1524, 3SE2024
24A	1	084399	Body,Pump,3", Vertical	
24B	1	084399H	Body,Pump,3",Horizontal	
25	2	625-02117	◇ Sleaving, Fiberglass	3SE1594, 3SE2094
	1	625-02117	Sleaving, Fiberglass	3SE1524, 3SE2024
	1	625-02117	Sleaving, Fiberglass	3SE1544, 3SE2044
	1	625-02117	Sleaving, Fiberglass	3SE1554, 3SE2054
26	1	084400	Ring,Spacer	
27	2	039383	Sensor, Moisture	
28	2	039934	Plug,Cap	
29	1	132762A	Wire Assy, Moist, 20"L,Red	
30	1	132762B	Wire Assy, Moist, 20"L,Orange	
31	2	5-32-6	Screw,BIhd	6-32,.25" Stainless
32	2	052563	Washer,Lock,#6	#6 Stainless

Order Online: www.PumpCatalog.com

Continued →

SECTION 1B
PAGE 94
DATE 3/20



PUMPS & SYSTEMS

A Crane Co. Company

BARNES • PROSSER • CROWN SERVICE PARTS

ITEM	QTY	PART NO.	DESCRIPTION	
33	1	See Table 3	Impeller, Cast Iron	
34	2	067562	Seal, Mechanical	Carbon / Ceramic / Buna-N (STD)
	2	067562SB	Seal, Mechanical	Tungsten / Tungsten / Buna-N (Optional)
	2	067562SD	Seal, Mechanical	Silicon / Silicon / Buna-N (Optional)
35	1	See Table 2	Power Cable Assembly	
36	2	2-31051-224	O-Ring	
37	1	See Table 2	Terminal Block	Power Cable
38	2	105197	Retainer Ring	
39	1	105111	Wire Assy, Ground, Green	3SE1544, 3SE2044
	1	105111	Wire Assy, Ground, Green	3SE1554, 3SE2054
	1	105111A	Wire Assy, Ground, Green	3SE1524, 3SE2024
	1	105111B	Wire Assy, Ground, Green	3SE1594, 3SE2094
40	1	105111	Wire Assy, Ground, Green	
41	1	018370	Ring, Retaining, Ext	
42	1	See Table 2	Assy, Cable, Moisture/Temp Sensor	
43	1	See Table 2	Terminal Block	Sensor Cable
	1	111909	Jumper Wire	

TABLE 2 - POWER & SENSOR CORD SETS

MODEL NO	30 FT. POWER	50 FT. POWER	100 FT. POWER	TERMINAL BLOCK POWER
3SE1524DS	109498XC	109498XF	109498XL	103760
3SE1594DS	109492XC	109492XF	109492XL	103586
3SE1544DS	103742XC	103742XF	103742XL	103583
3SE1554DS	103742XC	103742XF	103742XL	103583
3SE2024DS	103769XC	103769XF	103769XL	103760
3SE2094DS	109492XC	109492XF	109492XL	103586
3SE2044DS	103742XC	103742XF	103742XL	103583
3SE2054DS	103742XC	103742XF	103742XL	103583
3SEH2024DS	103769XC	103769XF	103769XL	103760
3SEH2094DS	109492XC	109492XF	109492XL	103586
3SEH2044DS	103742XC	103742XF	103742XL	103583
MODEL NO	30 FT. TEMP. SENSOR	50 FT. TEMP. SENSOR	100 FT. TEMP. SENSOR	TERMINAL BLOCK TEMP. SENSOR
3SE1524DS	113288XC	113288XF	113288XL	113272
3SE1594DS	113288XC	113288XF	113288XL	113272
3SE1544DS	113288XC	113288XF	113288XL	113272
3SE1554DS	113288XC	113288XF	113288XL	113272
3SE2024DS	113288XC	113288XF	113288XL	113272
3SE2094DS	113288XC	113288XF	113288XL	113272
3SE2044DS	113288XC	113288XF	113288XL	113272
3SE2054DS	113288XC	113288XF	113288XL	113272
3SEH2024DS	113288XC	113288XF	113288XL	113272
3SEH2094DS	113288XC	113288XF	113288XL	113272
3SEH2044DS	113288XC	113288XF	113288XL	113272

Order Online: www.PumpCatalog.com

Continued →

Series: 3SE-DS

Double Seal - Submersible Sewage Ejectors
1.5 & 2.0HP, 1750RPM

BARNES®

BARNES • PROSSER • CROWN SERVICE PARTS

TABLE 3 - IMPELLER ITEM #29

DIAMETER	1.5 & 2HP
7.00"	084439
6.88"	084439TA
6.75"	084439TB
6.62"	084439TC
6.50" (STD 2.0 HP)	084439TD
6.38"	084439TE
6.25"	084439TF
6.12"	084439TG
6.00" (STD 1.5 HP)	084439TH
5.88"	084439TJ
5.75"	084439TK
5.62"	084439TL
5.50"	084439TM
5.38"	084439TN
5.25"	084439TP
5.12"	084439TQ
5.00"	084439TR
4.88"	084439TS
4.75"	084439TT
4.62"	084439TU
4.50"	084439TV

End

SECTION 1B
PAGE 96
DATE 9/11

CRANE®

A Crane Co. Company

PUMPS & SYSTEMS