

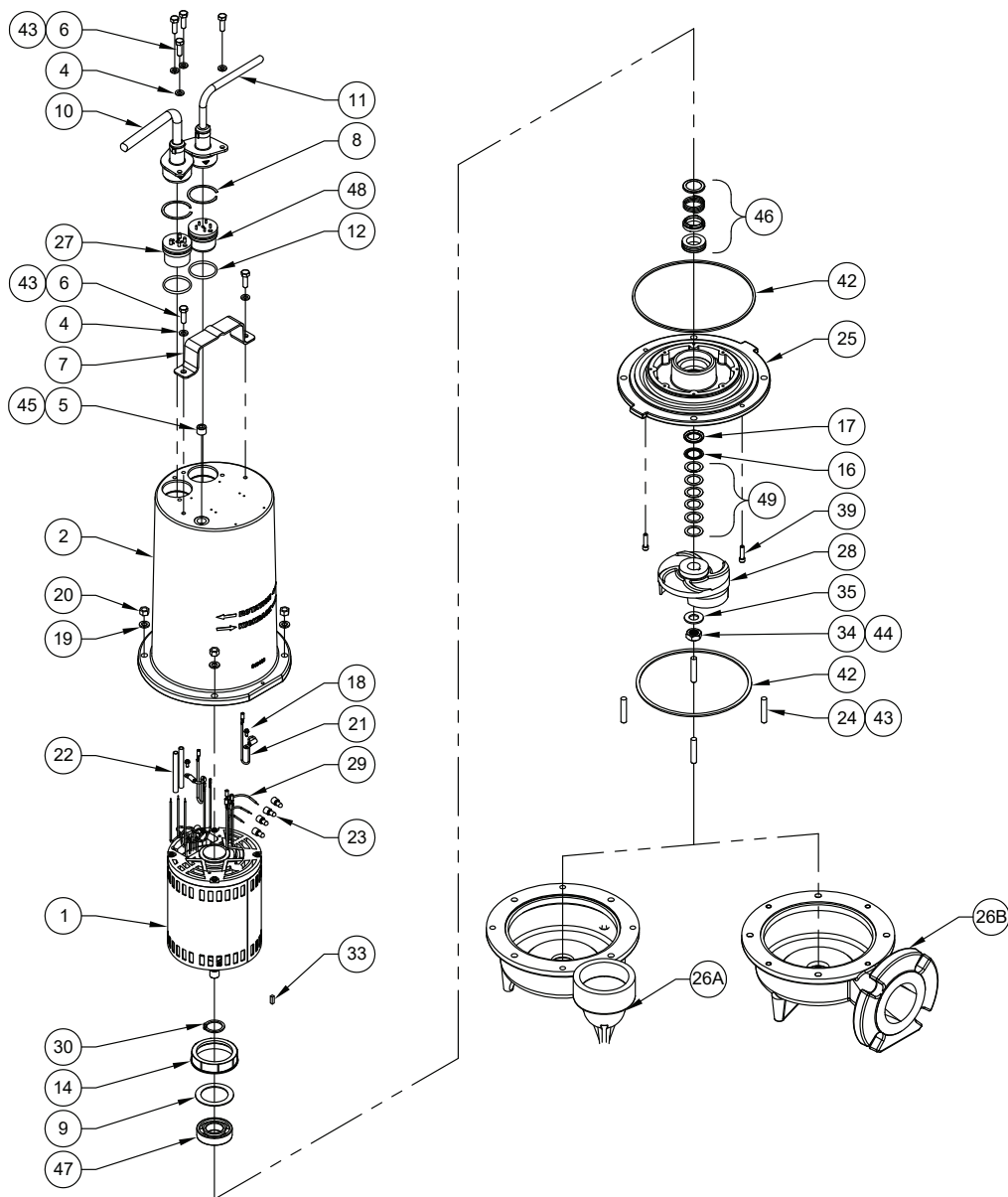
BARNES • PROSSER • CROWN SERVICE PARTS

MODEL	PART NO.	MODEL	PART NO.
3SE3032L	133153	3SEH3032L	133153H
3SE3042L	133154		
3SE3052L	133155		



Questions? Call 1-800-810-1053

Manual: 133410



Continued →

Series: 3SE-L

Submersible Sewage Ejectors
3.0HP, 3450RPM

BARNES®

www.cranepumps.com

BARNES • PROSSER • CROWN SERVICE PARTS

PARTS KITS

Seal Repair Kit P/N - 130182 (†) 12, 16, 17, 42, 46

Overhaul Kit P/N - 130209 (♦) 8, 12, 16, 17, 30, 33, 34, 35, 42, 46, 47

PARTS LIST

ITEM	QTY	PART NO.	DESCRIPTION	NOTES
1	1	088682	Motor, 3SE3032L, 3SE3042L	
		088684	Motor, 3SE3052L	
2	1	114492	Motor Housing	STD Power Cord
	1	114492HA	Motor Housing	with Optional Sensor Cord
4	4	026322	5/16" Lock washer	SS (STD)
	2	026322	5/16" Lock washer	SS, with Optional Sensor Cord
5	1	014270	3/8" NPT Pipe Plug	ZP
6	4	1-156-1	HXHD Cap Screw	5/16-18 x 1.00" LG, SS (STD)
	2	1-156-1	HXHD Cap Screw	5/16-18 x 1.00" LG, SS, with Optional Sensor Cord
7	1	103503	Handle	
8	1	105197	♦ Retainer Ring	
	1	105197	Retainer Ring	with Optional Sensor Cord
9	1	053756	Washer	1.875 x 2.625, Steel
10	1	See Table 2	Power Cord Assembly	STD
11	1	See Table 2	Sensor Cord Assembly	with Optional Sensor Cord
12	1	2-31051-224	†♦ O-Ring	Buna-N
	1	2-31051-224	†♦ O-Ring	Buna-N with Optional Sensor Cord
13	150 oz.	029034	Oil- Motor Housing	
14	1	053749	Conduit Bushing	
16	1	062641	†♦ Pull Washer	
17	1	061829	†♦ Exclusion Seal	Buna-N
18	1	016660	Self Tap Screw	
19	4	20-14-1	3/8" Lock washer	SS
20	4	15-23-1	3/8-16 Hex Nut	SS
21	1	105111B	Ground Wire	12AWG x 8.00" LG, 230V 3 Phase
	1	105111	Ground Wire	14AWG x 8.00" LG, 460/575V 3 Phase
22	1	625-02117	Fiberglass Sleeve	460/575V 3 Phase
	2	625-02117	Fiberglass Sleeve	230V 3 Phase
23	1	See BOM	Connector	230V 3 Phase
	5	See BOM	Connector	460V 3 Phase
	4	See BOM	Connector	575V 3 Phase
24	4	033824	Stud	3/8-16 x 2.00" LG, SS
25	1	062482	Seal Plate	CI
26A	1	067251	Volute, Vertical	CI
26B	1	067251H	Volute, Horizontal	CI
27	1	See Table 2	Power Cord Terminal Block	
28	1		Impeller, Cast Iron	
		088545	5.00" Dia.	
		088545TA	4.87" Dia. (3HP -STD)	
		088545TB	4.75" Dia.	
		088545TC	4.62" Dia.	
		088545TD	4.50" Dia.	
		088545TE	4.37" Dia.	
		088545TF	4.25" Dia.	
		088545TG	4.12" Dia.	
		088545TH	4.00" Dia.	
		088545TJ	3.87" Dia.	
		088545TK	3.75" Dia.	
		088545TL	3.63" Dia.	

Continued →

SECTION 1B
PAGE 106
DATE 3/20

CRANE®

A Crane Co. Company

PUMPS & SYSTEMS

USA: (937) 778-8947 • Canada: (905) 457-6223 • International: (937) 615-3598

BARNES • PROSSER • CROWN SERVICE PARTS

PARTS LIST

ITEM	QTY	PART NO.	DESCRIPTION	NOTES
29	3	088545TM	3.50" Dia.	
30	1	105149A	Jumper Wire	230V, 3 Phase
33	1	057882	◆ Retaining Ring	
34	1	057554	◆ Shaft Key	.19 x .19 x .575, SS
35	1	038132	◆ 5/8-16 Hex Nut	SS
39	1	070320	◆ 3/8" Flat Washer	SS
39	2	11-32-1	SKHD Cap Screw	1/4-20 x 1.00" LG, SS
42	2	033730	†◆ Square Ring	Buna-N
43	A/R	-----	Loctite Adhesive, #242-41	Blue
44	A/R	-----	Loctite Adhesive, #RC603	Green
45	A/R	-----	Loctite PSP #567	White Pipe Sealant
46	1	062435	†◆ Shaft Seal	Carbon/Ceramic/Buna-N (STD)
		062435SB	Shaft Seal	Tungsten/Tungsten/Buna-N
		062435SD	Shaft Seal	Silicon/Silicon/Buna-N
47	1	053746	◆ Ball Bearing	
48	1	See Table 2	Sensor Cord Terminal Block	with Optional Sensor Cord
49	2	028170	Shim, .005"	(use as required)
	1	026989	Shim, .010"	(use as required)
	3	028121	Shim, .030"	(use as required)

TABLE 2 - POWER AND SENSOR CORD SETS

MODEL NUMBER	30 FT. POWER	50 FT. POWER	100 FT. POWER	TERMINAL BLOCK POWER
3SE3032L	109492XC	109492XF	109492XL	103586
3SE3042L	103742XC	103742XF	103742XL	103583
3SE3052L	103742XC	103742XF	103742XL	103583
3SEH3032L	109492XC	109492XF	109492XL	103586
MODEL NUMBER	30 FT. SENSOR	50 FT. SENSOR	100 FT. SENSOR	TERMINAL BLOCK SENSOR
3SE3032L	113288XC	113288XF	113288XL	113272
3SE3042L	113288XC	113288XF	113288XL	113272
3SE3052L	113288XC	113288XF	113288XL	113272
3SEH3032L	113288XC	113288XF	113288XL	113272

Order Online: www.PumpCatalog.com

End