

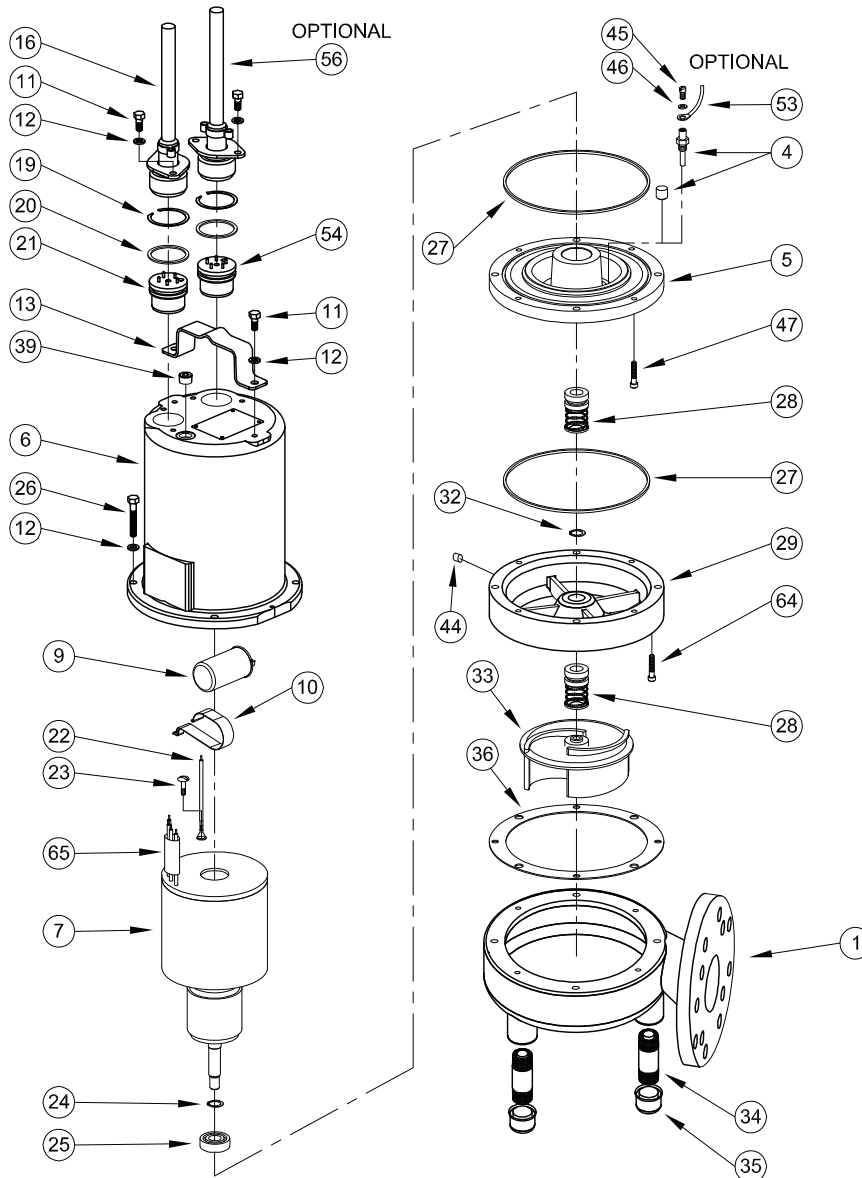
### BARNES • PROSSER • CROWN SERVICE PARTS

MODEL	PART NO.	MODEL	PART NO.
4SE914DS	105019	4SE1474DS	105028
4SE924DS	105020	4SE1494DS	105029
4SE994DS	105021	4SE1444DS	105030
4SE944DS	105022	4SE1454DS	105031
4SE954DS	105023	4SE1974DS	105036
		4SE1994DS	105037
		4SE1944DS	105038
		4SE1954DS	105039



Questions? Call **1-800-810-1053**

Manual: 105242



Continued →

# Series 4SE-L

4" Horizontal Discharge - Submersible Non-Clog Pumps

0.9, 1.4 & 1.8HP, 1750RPM



www.cranepumps.com

## BARNES • PROSSER • CROWN SERVICE PARTS

### PARTS KITS

#### Seal Repair Kits:

**Single Seal** .....P/N - **130180** (+) 20, 27, 28, 36

**Double Seal** .....P/N - **130176** (†) 20, 27, 28, 32, 36

#### Service Kits:

**Single Seal**.....P/N - **130207** (◇) 19, 20, 22, 24, 25, 27, 28, 36, 49, 65, 66

**Double Seal** .....P/N - **130172** (◆) 19, 20, 22, 24, 25, 27, 28, 32, 36, 44, 49, 65, 66

**Seal Tool Kit** .....P/N - **107271**

**Pressure Gauge Kit** .....P/N - **085343**

ITEM	QTY.	PART NO.	DESCRIPTION
1	1	103604	Volute
4	2	003217	Pipe Plug
			All double seal (Std), .25" NPT, ZP
	2	039383	Moisture Sensor Probes
			(Optional) for moisture sensor
5	1	084532	Seal Plate
			All single seal
		084906	Seal Plate
			All double seal
6	1	105196	Motor Housing
			(Std)
		105196HA	(Optional) for moisture and temp. sensors
7	1		Motor:
		030369BS	4SE914L
		030369BD	4SE914DS
		030370BS	4SE924L
		030370BD	4SE924DS
		071352BS	4SE994L, 4SE944L
		071352BD	4SE994DS, 4SE944DS
		092854BS	4SE954L
		092854BD	4SE954DS
		085472BS	4SE1474L
		085472BD	4SE1474DS
		029792BS	4SE1924L
		029792BD	4SE1924DS
		071354BS	4SE1494L, 4SE1444L, 4SE1994L, 4SE1944L
		071354BD	4SE1494DS, 4SE1444DS, 4SE1994DS, 4SE1944DS
		092855BS	4SE1454L, 4SE1954L
		092855BD	4SE1454DS, 4SE1954DS
8	96oz	029034	Oil
	120oz	029034	Oil
			All single seal
			All double seal (Includes 24oz. in Seal Chamber)
9	1	034964	Capacitor
			(30MFD) 1 Phase
10	1	039858	Capacitor Bracket
			1 Phase
11	4	1-129-1	Hex. Hd. Cap Screw
			(Std), 5/16-18 x .75" Lg., Stainless
	6	1-129-1	Hex. Hd. Cap Screw
			(Optional) for moisture and temp. sensors
12	8	026322	Lockwasher
			(Std), 5/16, Stainless
	10	026322	Lockwasher
			(Optional) for moisture and temp. sensors
13	1	103503	Handle
16	1	See Table 2	Power Cable Set
16a	1	103582	Compression Flange
			Included with cable set
19	1	105197	Snap Ring
			(Std)
	2	105197	Snap Ring
			(Optional) for moisture and temp. sensors
20	1	2-31051-224	O-ring
			(Std)
	2	2-31051-224	O-ring
			(Optional) for moisture and temp. sensors
21	1	103584	Terminal Block
			1 Phase
	1	103583	Terminal Block
			3 Phase
22	1	105111	Ground Wire Assembly
			(Std)
	2	105111	Ground Wire Assembly
			(Optional) for moisture and temp. sensors

\* Units with build code date (see section G-4) before -0901 may use capacitor part number, 070963 or the 034964 part number.

Continued →

SECTION 1D  
PAGE 48  
DATE 9/09



PUMPS & SYSTEMS

A Crane Co. Company

USA: (937) 778-8947 • Canada: (905) 457-6223 • International: (937) 615-3598

### BARNES • PROSSER • CROWN SERVICE PARTS

ITEM	QTY.	PART NO.		DESCRIPTION	
23	1	016660		Screw #8-32 x .375" Lg.	
24	1	085326	◆◆	Retaining Ring	Included with motor
25	1	017414	◆◆	Bearing	
26	4	1-135-1		Cap Screw All single seal, 5/16-18 x 1.75" Lg., Stainless	
	4	1-168-1		Cap Screw All double seal, 5/16-18 x 3.50" Lg., Stainless	
27	1	027269	+ † ◆◆	Square RingAll single seal	
	2	027269	◆	Square RingAll double seal	
28	1		+ † ◆◆	Shaft Seal: (Qty 2 for DS)	
		005080		Carbon/Ceramic/Buna-N (STD)	
		005080SB		Tungsten/Tungsten/Buna-N	
		005080SD		Silicon Carbide/Silicon Carbide/Buna-N	
		005080SF		Carbon/Ceramic/Viton	
		005080SH		Tungsten/Tungsten/Viton	
		005080SK		Silicon Carbide/Silicon Carbide/Viton	
		005080SM		Silicon Carbide/Tungsten/Buna-N	
		005080SN		Carbon/Ni-Resistant/Buna-N	
		005080SP		Carbon/Ni-Resistant/Neoprene	
		082850		Carbon/Ni-Resistant/Viton	
29	1	103587		Seal Housing	All double seal
32	1	2-27008-62	† ◆	Retaining Ring	All double seal
33	1			Impeller, Cast Iron:	
		084346		6.00 Dia. (STD for 1.9 HP)	
		084346TA		5.88 Dia.	
		084346TB		5.75 Dia.	
		084346TC		5.63 Dia. (STD for 1.4 HP)	
		084346TD		5.50 Dia.	
		084346TE		5.38 Dia.	
		084346TF		5.25 Dia. (STD for .9 HP)	
		084346TG		5.13 Dia.	
		084346TH		5.00 Dia.	
		084346TJ		4.88 Dia.	
		084346TK		4.75 Dia.	
		084346TL		4.63 Dia.	
		084346TM		4.50 Dia.	
		084346TN		4.38 Dia.	
		084346TP		4.25 Dia.	
		084346TQ		4.13 Dia.	
		084346TR		4.00 Dia.	
34	3	005808		Nipple	
35	3	003479		Cap	
36	1	027344	+ † ◆◆	Gasket	
39	1	014270		Pipe Plug	.375" NPT, ZP
41	A/R			Loctite242	
42	A/R			Permatex2C	
44	1	003217	◆	Pipe Plug	All double seal, .25" NPT, ZP
45	2	5-32-6		Screw	(Optional ) for moisture sensor, #6-32 x .25" Lg., ZP
46	2	052563		Lockwasher	(Optional) for moisture sensor, #6 Stl.
47	2	084948		Socket Head Screw	1/4-20 x 1.25" Lg., Stainless
48	4	105150		Terminal Connector	200-240V, 3Ph
	3	625-00163		Terminal Connector	480V, 3PH
49	3	105149	◆◆	Wire Assembly	200-240V, 3Ph
50	1	051621		Thermal Sensor	(Optional) for temperature sensor, (Not Shown)
51	2	105155		Wire Assembly	(Optional) for temperature sensor, (Not Shown)
52	2	134013		Terminal Connector	(Optional) for temperature sensor, (Not Shown)
53	2	105106		Wire Assembly	(Optional) for moisture sensor

Continued →

# Series 4SE-L

4" Horizontal Discharge - Submersible Non-Clog Pumps  
0.9, 1.4 & 1.8HP, 1750RPM

# BARNES®

www.cranepumps.com

## BARNES • PROSSER • CROWN SERVICE PARTS

ITEM	QTY.	PART NO.	DESCRIPTION
54	1	103584	Terminal Block
		103585	Temperature sensor options
56	1	See Table 2	Control Cable
57	A/R		Loctite 603
64	2	030337	Socket Head Cap Screw
65	1	625-02117	◇ ◇ Sleeve, Fiberglass
66	1	030068	◇ ◇ Jam Nut
69	1	111909	Jumper Wire

TABLE 2 - POWER & SENSOR CORD SETS					
CABLE LENGTH	ITEM #16 240 VOLT 1 PHASE  (plug included)	ITEM #16 240 VOLT 1 PHASE  (no plug)	ITEM #16 3 PHASE  (no plug)	ITEM #56 (OPTIONAL) Temperature 3 Phase	ITEM #56 (OPTIONAL) Moisture and Temperature Sensor 3 Phase or Moisture Sensor
8 FT	103756A	103741A	103742A	103741A	113288A
15 FT	103756	103741	103742	103741	113288
20 FT	103756XA	103741XA	103742XA	103741XA	113288XA
30 FT (Std)	103756XC	103741XC	103742XC	103741XC	113288XC
50 FT	103756XF	103741XF	103742XF	103741XF	113288XF
75 FT	103756XJ	103741XJ	103742XJ	103741XJ	113288XJ
100 FT	103756XL	103741XL	103742XL	103741XL	113288XL

Order Online: [www.PumpCatalog.com](http://www.PumpCatalog.com)

END

SECTION 1D  
PAGE 50  
DATE 12/19

**CRANE**®

A Crane Co. Company

PUMPS & SYSTEMS

USA: (937) 778-8947 • Canada: (905) 457-6223 • International: (937) 615-3598