

Series 4SE-HL

4" Horizontal Discharge - Submersible Non-Clog Pumps
4.5 thru 15HP, 1150 & 1750RPM

BARNES®

www.cranepumps.com

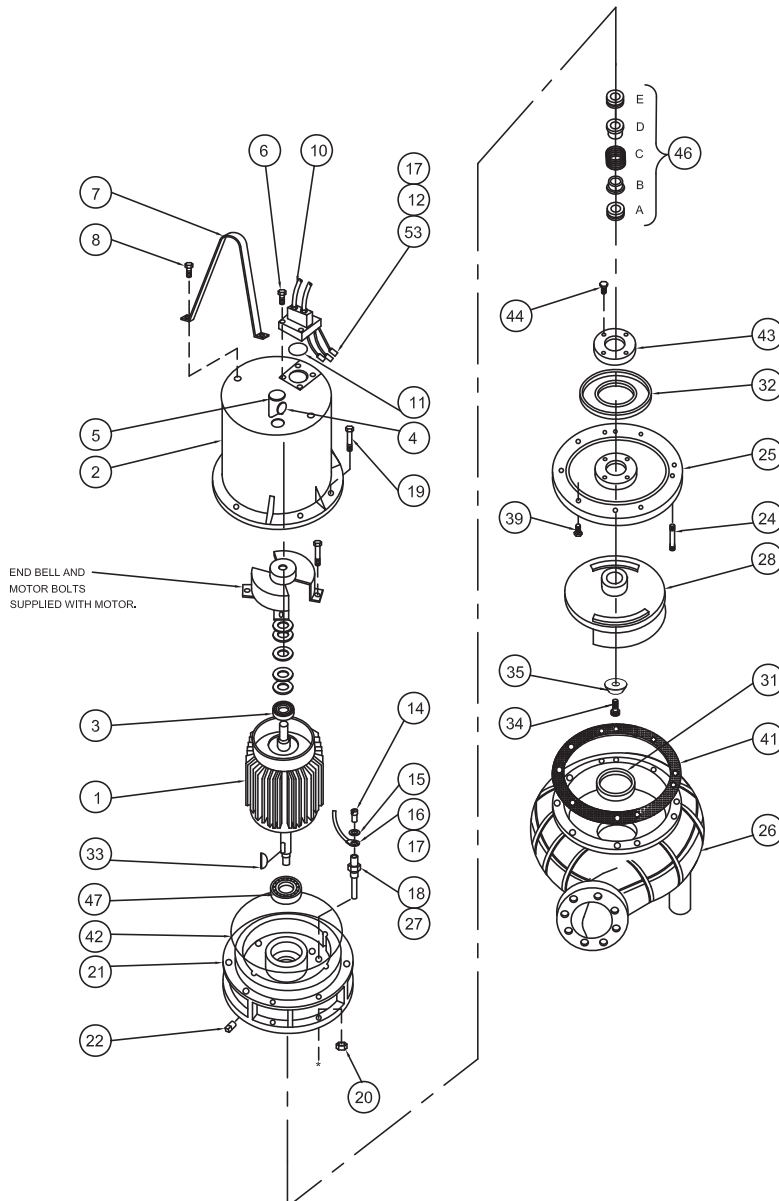
BARNES • PROSSER • CROWN SERVICE PARTS

MODEL	PART NO.	MODEL	PART NO.
1150RPM		1750RPM	
4SE4526HL	084636 - Discontinued	4SE7524HL	084641
4SE4596HL	084637 - Discontinued	4SE7534HL	084642
4SE4546HL	084638 - Discontinued	4SE7544HL	084643
4SE4556HL	089313 - Discontinued	4SE7554HL	089315
4SE7596HL	084639 - Discontinued	4SE11334HL	084644
4SE7546HL	084640 - Discontinued	4SE11344HL	084645
4SE7556HL	089314 - Discontinued	4SE11354HL	089316
		4SE15034HL	084646
		4SE15044HL	084647
		4SE15054HL	089317



Questions? Call **1-800-810-1053**

Manual: 084831



Continued →

SECTION 1D
PAGE 12
DATE 2/07

CRANE
A Crane Co. Company

PUMPS & SYSTEMS

USA: (937) 778-8947 • Canada: (905) 457-6223 • International: (937) 615-3598

BARNES • PROSSER • CROWN SERVICE PARTS

PARTS KITS

Seal Repair Kit.....P/N-130179, 130179A (Tungsten Carbide)

Overhaul Kit.....P/N-130175

Seal Tool Kit.....P/N-085737

Pressure Gauge Kit...P/N-085343

ITEM	QTY	PART NO.	DESCRIPTION
1	1	072688MA	Motor - 4SE4526HL
		072689MA	4SE4596HL, 46HL
		092819	4SE4556HL
		072690MA	4SE7596HL, 46HL
		092820	4SE7556HL
		072694MA	4SE7524HL
		072695MA	4SE7534HL, 44HL
		091726	4SE7554HL
		072696MA	4SE11334HL, 44HL
		091743	4SE11354HL
		072697MA	4SE15034HL, 44HL
		091744	4SE15054HL
2	1	053030	Motor Housing
3	1	039734	◆ Ball Bearing
4	1	070624	Pipe Closure
5	1	070623	Pressure Relief Valve
6	4	1-34-1	Cap Screw, 3/8-16 x 1" Ig Stainless
7	1	036863A	S.S. Lifting Strap
8	2	1-68-1	Cap Screw, 1/2-13 x 1-1/4" Ig Stainless
10	1	See Table 2	Conduit Box & Cable Assembly
10a	1	-----	Power Cable (Not Sold Separately)
10b	1	051447	* Gland Nut
	1	072559	* Gland Nut (For 7.5 & 11.3Hp 3Ph & 15Hp 575V)
	1	052259	* Gland Nut (For 7.5HP, 1PH & 15HP ONLY)
10c	2	051450	* Friction Ring
	2	071431A	* Friction Ring (For 7.5 & 11.3Hp 3Ph & 15Hp 575V)
	2	110929	* Friction Ring (For 7.5HP, 1PH & 15HP ONLY)
10d	1	051452	* Grommet
	1	071430A	* Grommet (For 7.5 & 11.3Hp 3Ph & 15Hp 575V)
	1	110928	* Grommet (For 7.5HP, 1PH & 15HP ONLY)
10e	1	-----	* Control Cable (Not Sold Separately)
10f	1	051448	* Gland Nut
10g	2	021531	* Friction Ring
10h	1	066871	*◆ Grommet
10J	1	030169	* Ground Screw 10-32 x 5/8 Lg Stainless
11	1	051937	*◆ Square Ring
12	5	016406	◆ Connector
	5	030148	◆ Connector (7.5HP, 1PH & 15HP ONLY)
13	2.5 Gal	029034	Oil - Motor Housing
	35 oz.		Oil - Seal Cavity
14	2	5-32-6	Machine Screw 6-32 x 1/4 Cad. Plt. Steel
15	2	052563	Lockwasher No. 6 Steel
16	2	051487	◆ Moisture Sensor Wire
17	4	134013	◆ Connector (Sensor Wires)
18	2	039383	Electrode
19	6	1-38-1	Hex Hd Screw 3/8-16 x 1.50" Ig Stainless
20	6	018927	Nut 3/8-16 Stainless
21	1	039030	Bearing Bracket

Continued →

Series 4SE-HL

4" Horizontal Discharge - Submersible Non-Clog Pumps
4.5 thru 15HP, 1150 & 1750RPM

BARNES®

www.cranepumps.com

BARNES • PROSSER • CROWN SERVICE PARTS

ITEM	QTY	PART NO.	DESCRIPTION
22	1	003202	Pipe Plug
24	6	033824	Stud 3/8-16 x 2" lg Stainless
25	1	039038	Seal Plate
26	1	082213	Volute
27	2	039934	Caplug
28	1	082217	9.00" Dia. - 7.5,1150 & 15,1750
		082217TA	8.88" Dia.
		082217TB	8.75" Dia.
		082217TC	8.62" Dia.
		082217TD	8.50" Dia.
		082217TE	8.38" Dia.
		082217TF	8.25" Dia.
		082217TG	8.12" Dia.
		082217TH	8.00" Dia. - 11.3HP,1750RPM
		082217TJ	7.75" Dia.
		082217TL	7.62" Dia.
		082217TM	7.50" Dia. - 4.5HP,1150RPM
		082217TN	7.38" Dia.
		082217TP	7.25" Dia.
		082217TQ	7.12" Dia.
		082217TR	7.00" Dia. - 7.5HP,1750RPM
		082217TS	6.88" Dia.
		082217TT	6.75" Dia.
		082217TU	6.62" Dia.
		082217TV	6.50" Dia.
31	1	082083	Wear Ring
32	1	022873	+♦ Diaphragm
33	1	Q21-56-J8	♦ Shaft Key 1/4 Sq. x 1.00" lg. Stainless
	1	Q21-39-J8	♦ Shaft Key 1/4 Sq. x 1-5/8" lg. Stainless
34	1	11-81-1	♦ SKHD Screw 1/2-13 x 1-1/4 lg 18-8 Stainless
35	1	4587-SS	Impeller Washer, .531 x 1.562 Stainless
39	2	036803	Soc. Hd. Cap Screw 1/4-20 x 3/4" lg Stainless
41	1	036852	+♦ Gasket
42	1	056668	+♦ Square-Ring
43	1	022879	Diaphragm Clamp Ring
44	4	002203	Cap Screw 1/4-20 x 7/8" lg Steel
46	1	039485	+♦ Shaft Seal (Both Ends) Carbon/Ceramic/Buna-N (STD)
		060817	(Pump End) Tungsten/Carbide/Buna-N
		060817SC	(Both Ends) Tungsten/Carbide/Buna-N
47	1	039332	♦ Ball Bearing
54	5	016405	♦ Insulator
	5	030149	♦ Insulator (7.5HP, 1PH & 15HP ONLY)

Continued →

SECTION 1D
PAGE 14
DATE 9/09

CRANE®

A Crane Co. Company

PUMPS & SYSTEMS

USA: (937) 778-8947 • Canada: (905) 457-6223 • International: (937) 615-3598

BARNES • PROSSER • CROWN SERVICE PARTS

TABLE 2 - CORD SETS

MODELS/ LENGTHS	ITEM #10 Moist. & Temp (STD) Except; 7.5Hp, 1Ph & 3Ph, 230 & 460 V, 1750RPM 11.3 & 15Hp, 3Ph, 230 & 460V, 1750RPM	ITEM #10 Moist. & Temp (STD) For; 7.5Hp, 1Ph, 1750RPM 15Hp, 3Ph, 1750RPM 15Hp, 3Ph, 230 & 460V, 3450RPM ONLY	ITEM #10 Moist. & Temp (STD) For; 7.5 & 11.3Hp, 3Ph, 230 & 460V. and 15Hp, 575V ONLY
40 Ft. (STD)	072448XE	111160XE	072700XE
50 Ft.	072448XF	111160XF	072700XF
75 Ft.	072448XJ	111160XJ	072700XJ
100 Ft.	072448XL	111160XL	072700XL
150 Ft.	072448XS	111160XS	072700XS

Order Online: www.PumpCatalog.com

End