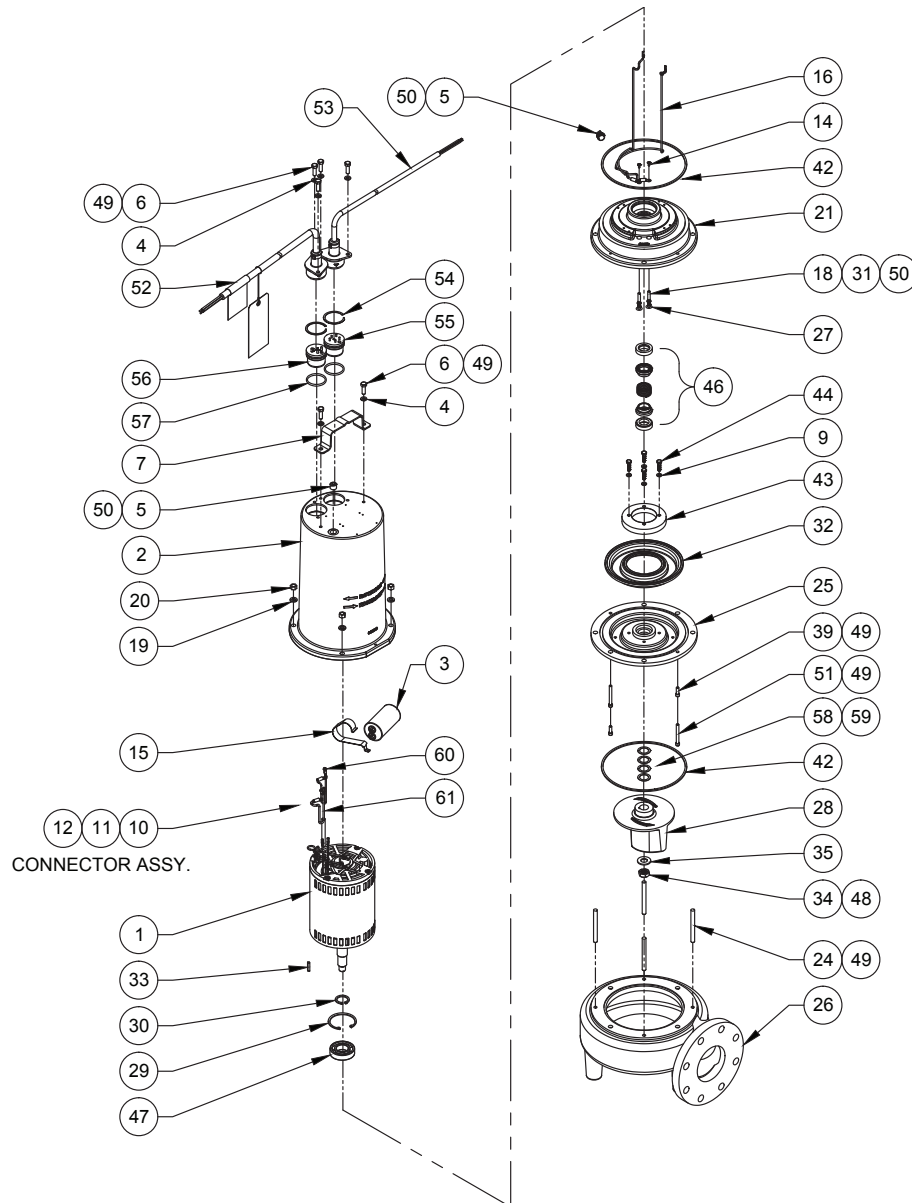


BARNES • PROSSER • CROWN SERVICE PARTS

MODEL	PART NO.	MODEL	PART NO.	MODEL	PART NO.
1150RPM:		1750RPM:			
4SE1926L	133159	4SE2824L	133125		
4SE1996L	133160	4SE2894L	133141		
4SE1946L	133161	4SE2844L	133142		
4SE1956L	133162	4SE2854L	133144		
4SE2826L	133163	4SE3724L	133145		
4SE2896L	133164	4SE3794L	133146		
4SE2846L	133165	4SE3744L	133147		
4SE2856L	133166	4SE3754L	133148		
		4SE5024L	133149		
		4SE5094L	133150		
		4SE5044L	133151		
		4SE5054L	133152		

Manual: 133406



Continued →

Series 4SE-L

4" Horizontal Discharge - Submersible Non-Clog Pumps
1.9, 2.8, 3.7 & 5HP, 1150 & 1750RPM

BARNES®

www.cranepumps.com

BARNES • PROSSER • CROWN SERVICE PARTS

PARTS KITS

- Seal Repair Kit.....P/N-130178
- Service Kit.....P/N-130174
- Seal Tool Kit.....P/N-085736
- Pressure Gauge Kit...P/N-085343

PARTS LIST

ITEM	QTY	PART NO.	DESCRIPTION	NOTES
1	1	082540	Motor, 4SE1926L	230V, 1Phase, 1150RPM
		082541	Motor, 4SE1996L, 4SE1946L	230/460V, 3Phase, 1150RPM
		092864	Motor, 4SE1956L	575V, 3Phase, 1150RPM
		082540	Motor, 4SE2826L	230V, 1Phase, 1150RPM
		082541	Motor, 4SE2896L, 4SE2846L	230/460V, 3Phase, 1150RPM
		096639	Motor, 4SE2856L	575V, 3Phase, 1150RPM
		065900	Motor, 4SE2824L	230V, 1Phase, 1750RPM
		065889	Motor, 4SE2894L, 4SE2844L	230/460V, 3Phase, 1750RPM
		092865	Motor, 4SE2854L	575V, 3Phase, 1750RPM
		065941	Motor, 4SE3724L	230V, 1Phase, 1750RPM
		065889	Motor, 4SE3794L, 4SE3744L	230/460V, 3Phase, 1750RPM
		092866	Motor, 4SE3754L	575V, 3Phase, 1750RPM
		088758	Motor, 4SE5024L	230V, 1Phase, 1750RPM
		088763	Motor, 4SE5094L, 4SE5044L	230/460V, 3Phase, 1750RPM
		088766	Motor, 4SE5054L	575V, 3Phase, 1750RPM
2	1	114492HA	Motor Housing, Double Cords	Power and Sensor Cords (STD)
		114492	Motor Housing, Single cord	Power Cord ONLY (Optional)
3	1	035864	Capacitor - 370V, 35MFD	1.9HP& 2.8HP, 1150RPM 1Phase
		033473	Capacitor - 370V, 40MFD	2.8HP , 1750RPM 1Phase
		036391	Capacitor - 370V, 45MFD	3.7HP & 5HP 1Phase
4	6	026322	Lock washer	5/16" SS
5	2	014270	3/8" NPT Pipe Plug	ZP
6	6	1-156-1	HXHD Cap Screw	5/16-18 x 1" LG, SS
7	1	103503	Handle	SS
9	4	20-13-1	1/4" Lock washer	SS
10	2	625-02117	Fiberglass Sleeve	230V, 3Phase
	1	625-02117	Fiberglass Sleeve	460V, 3Phase, 230V, 1Phase, 575V 3Phase
11	4	105150	Wire Crimp Connector	230V, 3Phase
	3	105150	Wire Crimp Connector	460V, 3Phase
12	3	105149A	Jumper Wire	230V, 3Phase
13	150 oz.	029034	Oil- Motor Housing	
	40 oz.	029034	Oil - Seal Cavity	
14	2	038156	Machine Screw	#6-32 x 3/8" LG, ZP
15	1	133495	Bracket, Cap	1 Phase ONLY
16	1	133403A	Moisture Sensor Wire	Red
	1	133403B	Moisture Sensor Wire	Orange
18	2	066843	Moisture Electrode	
19	4	20-14-1	3/8" Lock washer	SS
20	4	15-23-1	3/8"-16 Hex Nut	SS
21	1	065892	Bearing Bracket	CI
24	4	066103	Stud	3/8-16 x 3-7/8" LG, SS
25	1	065893	Seal Plate	CI
26	1	066743	Volute	CI
27	2	039934	Moisture Electrode Cap Plug	
28	1		Impeller, Cast Iron	1.9HP 1150RPM, 2.8HP & 3.7HP 1750RPM
		058850	7.00" Dia.	(1.9HP STD)
		058850TA	6.88" Dia.	
		058850TB	6.75" Dia.	
		058850TC	6.62" Dia.	

Continued →

SECTION 1D
PAGE 52
DATE 7/12

CRANE®

PUMPS & SYSTEMS

A Crane Co. Company

USA: (937) 778-8947 • Canada: (905) 457-6223 • International: (937) 615-3598

BARNES • PROSSER • CROWN SERVICE PARTS

PARTS LIST

ITEM	QTY	PART NO.	DESCRIPTION	NOTES
		058850TD	6.50" Dia.	(3.7HP STD)
		058850TE	6.38" Dia.	
		058850TF	6.25" Dia.	
		058850TG	6.12" Dia.	
		058850TH	6.00" Dia.	(2.8HP STD)
		058850TJ	5.88" Dia.	
		058850TK	5.75" Dia.	
		058850TL	5.62" Dia.	
		058850TM	5.50" Dia.	
		058850TN	5.38" Dia.	
		058850TP	5.25" Dia.	
		058850TQ	5.12" Dia.	
		058850TR	5.00" Dia.	
		058850TS	4.88" Dia.	
		058850TT	4.75" Dia.	
		058850TU	4.62" Dia.	
		058850TV	4.50" Dia.	
		058850TW	4.38" Dia.	
		058850TX	4.25" Dia.	
		058850TY	4.12" Dia.	
		058850TZ	4.00" Dia.	
28	1		Impeller, Cast Iron	2.8HP 1150RPM & 5.0HP 1750RPM
		088534	7.50" Dia.	(2.8HP STD)
		088534TA	7.38" Dia.	
		088534TB	7.25" Dia.	
		088534TC	7.12" Dia.	
		088534TD	7.00" Dia.	(5.0HP STD)
		088534TE	6.88" Dia.	
		088534TF	6.75" Dia.	
		088534TG	6.62" Dia.	
		088534TH	6.50" Dia.	
		088534TJ	6.38" Dia.	
		088534TK	6.25" Dia.	
		088534TL	6.12" Dia.	
		088534TM	6.00" Dia.	
		088534TN	5.88" Dia.	
		088534TP	5.75" Dia.	
		088534TQ	5.62" Dia.	
		088534TR	5.50" Dia.	
		088534TS	5.38" Dia.	
		088534TT	5.25" Dia.	
29	1	066130	◆ Retaining Ring	
30	1	057882	◆ Retaining Ring	
31	2	003217	1/4" NPT Sq. Pipe Plug	ZP (when Item 18 not used)
32	1	022873	†◆ Diaphragm	Buna-N
33	1	059186	◆ Shaft Key	3/16 Sq x 1" LG, SS
34	1	038132	◆ 5/8-18 Hex Nut	SS
35	1	070320	◆ 5/8" Flat Washer	SS
39	2	036803	SKHD Cap Screw	1/4-20 x 3/4" LG, SS
	2	11-32-1	SKHD Cap Screw	1/4-20 x 1" LG, SS
42	2	033730	†◆ Square Ring	Buna-N
43	1	022879	Diaphragm Clamp Ring	Al
44	4	002204	HXHD Cap Screw	1/4-20 x 1" LG Steel
	4	1-7-1	HXHD Cap Screw	1/4-20 x 1" LG SS
46	1	064434	†◆ Shaft Seal (Both Ends)	Carbon/Ceramic/Buna-N (STD)
		071796	(Pump End)	Tungsten/Tungsten/Buna-N
		071796D	(Both Ends)	Tungsten/Tungsten/Buna-N
47	1	053746	◆ Ball Bearing	

Continued →

Series 4SE-L

4" Horizontal Discharge - Submersible Non-Clog Pumps
1.9, 2.8, 3.7 & 5HP, 1150 & 1750RPM

BARNES®

www.cranepumps.com

BARNES • PROSSER • CROWN SERVICE PARTS

PARTS LIST

ITEM	QTY	PART NO.	DESCRIPTION	NOTES
48	A/R	-----	Loctite Adhesive, #RC603	Green
49	A/R	-----	Loctite Adhesive, #242-41	Blue
50	A/R	-----	Loctite PST, #567	White Pipe Sealant
51	2	066192	SKHD Cap Screw	1/4-20 x 2-1/4" LG, SS
52	1	See Table 2	Power Cord Assembly	
53	1	See Table 2	Sensor Cord Assembly	
54	2	105197	Retainer Ring	♦
55	7	See Table 2	Sensor Cord Terminal Block	
56	1	See Table 2	Power Cord Terminal Block	
57	2	2-31051-224	O-Ring	†♦ Buna-N
58	2	026989	Shim, .005	Use as required
59	2	028120	Shim, .010	Use as required
60	2	016660	Self-Tap Screw	#8-32 x 3/8" LG, SS
61	1	105111	Ground Wire	14 AWG x 8" LG, Grn, 460V/575V 3Phase
	1	105111A	Ground Wire	10 AWG x 8" LG, Grn, 230V 1Phase
	1	105111B	Ground Wire	12 AWG x 8" LG, Grn, 230V 3Phase
	1	111909	Jumper Wire	



Questions? Call **1-800-810-1053**

Continued →

SECTION 1D
PAGE 54
DATE 7/12

CRANE®

A Crane Co. Company

PUMPS & SYSTEMS

USA: (937) 778-8947 • Canada: (905) 457-6223 • International: (937) 615-3598

BARNES • PROSSER • CROWN SERVICE PARTS

TABLE 2 - POWER AND SENSOR CORD SETS

MODEL NUMBER	30 FT. POWER	50 FT. POWER	100 FT. POWER	TERMINAL BLOCK POWER
4SE1926L	103741XC	103741XF	103741XL	103584
4SE1996L	104742XC	104742XF	104742XL	103583
4SE1946L	103742XC	103742XF	103742XL	103583
4SE1956L	103742XC	103742XF	103742XL	103583
4SE2826L	103498XC	103498XF	103498XL	103760
4SE2896L	103742XC	103742XF	103742XL	103583
4SE2846L	103742XC	103742XF	103742XL	103583
4SE2856L	103742XC	103742XF	103742XL	103583
4SE2824L	103498XC	103498XF	103498XL	103760
4SE2894L	109492XC	109492XF	109492XL	103586
4SE2844L	103742XC	103742XF	103742XL	103583
4SE2854L	103742XC	103742XF	103742XL	103583
4SE3724L	103769XC	103769XF	103769XL	103760
4SE3794L	109492XC	109492XF	109492XL	103586
4SE3744L	103742XC	103742XF	103742XL	103583
4SE3754L	103742XC	103742XF	103742XL	103583
4SE5024L	103769XC	103769XF	103769XL	103760
4SE5094L	103739XC	103739XF	103739XL	103586
4SE5044L	103742XC	103742XF	103742XL	103583
4SE5054L	103742XC	103742XF	103742XL	103583

MODEL NUMBER	30 FT. SENSOR	50 FT. SENSOR	100 FT. SENSOR	TERMINAL BLOCK SENSOR
4SE1926L	113288XC	113288XF	113288XL	113272
4SE1996L	113288XC	113288XF	113288XL	113272
4SE1946L	113288XC	113288XF	113288XL	113272
4SE1956L	113288XC	113288XF	113288XL	113272
4SE2826L	113288XC	113288XF	113288XL	113272
4SE2896L	113288XC	113288XF	113288XL	113272
4SE2846L	113288XC	113288XF	113288XL	113272
4SE2856L	113288XC	113288XF	113288XL	113272
4SE2824L	113288XC	113288XF	113288XL	113272
4SE2894L	113288XC	113288XF	113288XL	113272
4SE2844L	113288XC	113288XF	113288XL	113272
4SE2854L	113288XC	113288XF	113288XL	113272
4SE3724L	113288XC	113288XF	113288XL	113272
4SE3794L	113288XC	113288XF	113288XL	113272
4SE3744L	113288XC	113288XF	113288XL	113272
4SE3754L	113288XC	113288XF	113288XL	113272
4SE5024L	113288XC	113288XF	113288XL	113272
4SE5094L	113288XC	113288XF	113288XL	113272
4SE5044L	113288XC	113288XF	113288XL	113272
4SE5054L	113288XC	113288XF	113288XL	113272

End